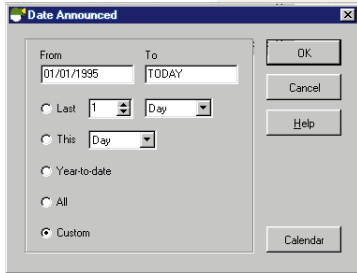


Step 1. Select a Database.

Begin your search by selecting one of over 45 database options. You can also choose to open an existing SDC Standard Session which can duplicate League Tables featured in the press, or set up basic search criteria for you.

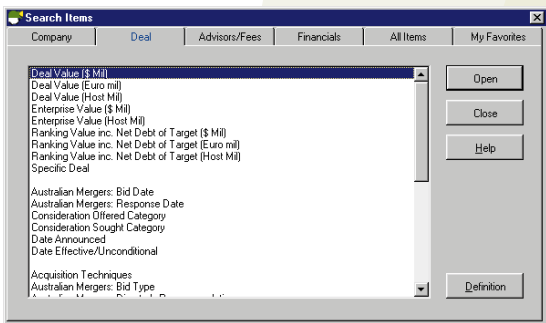
Check the desired database and click OK.

HINT: Click F1 to see complete database descriptions.



Step 2. Choose a Date Range.

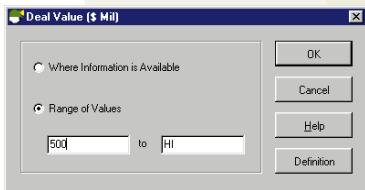
For the M&A database the date range reflects the date the merger/acquisition was announced. Enter a custom date range or choose from pre-set time periods, (e.g. Last 2 Quarters), then click OK.



Step 3. Define Your Search.

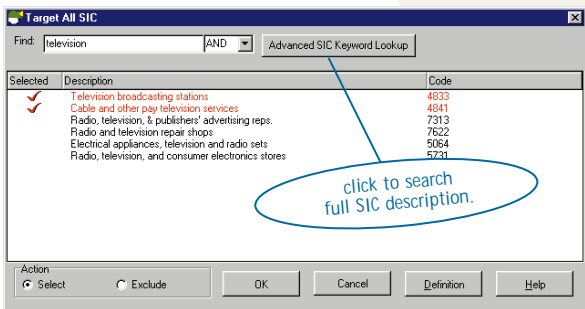
Choose from data items such as a company, nation, or industry to establish the criteria for your search. For this search we're using the value of the transaction (Deal Value) to narrow our search. Click on a data item and click Open.

HINT: The Search Items window contains lists of frequently used search items, categorized into tabs. The All Items tab lists all searchable data items. When selecting items from this tab, click the Add to My Favorites button to add any search item to the My Favorites tab.



Enter a value range for the data item selected and click OK.

For this search we've also selected the Target All SIC data item from the Company tab in the Search Items window to continue narrowing our search. Simply double-click on the items you wish to select or exclude, and click OK.

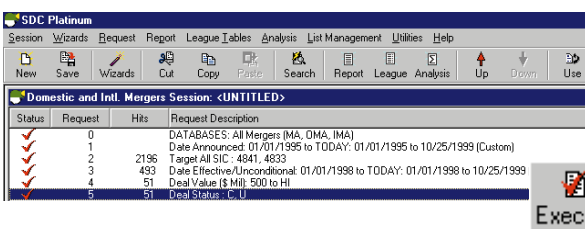


Continue selecting data items from the Search Items window until your search criteria defines the set of transactions you'd like to research.

Step 4. Refine and Execute Your Search.

Re-order requests, modify criteria, or use one of the Utilities (refer to next page). At this point we recommend that you click on Execute to see the number of transactions in your current search result.

HINT: Easily modify your criteria by double-clicking on the request description.



HELPFUL HINTS

Use SDC Platinum online help for:

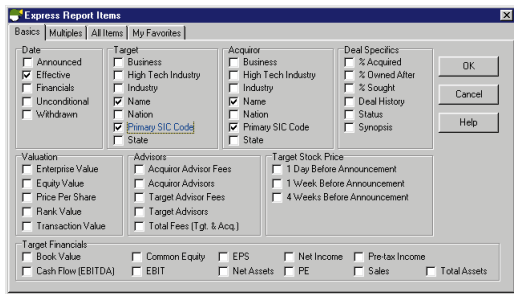
- Data item definitions
- Complete descriptions of SDC databases
- Step-by-step instructions on specific tasks
- Answers to "How can I..." questions

For context sensitive help, press F1 or click on the Help button in any window.

Access the SDC Platinum User's Handbook by clicking on Help/Users Manual

SDC Platinum™

QUICK REFERENCE GUIDE (continued)



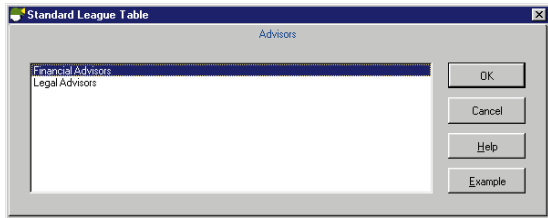
Step 5. Create a Custom Report.

From the pull-down menu, choose Reports/New Custom.

In the Express Report Items window you can choose all of the data items you'd like to appear on your report.

or

From the pull down menu, choose League Tables/SDC Standard. In the Custom Standard Table Window choose the type of League Table you'd like to create and click on OK.



Step 6. Click on Execute.



Step 7. View & Analyze Search Results.

Download your report or ranking data to a text, Microsoft® Excel, or Lotus file before or after you execute. Instantly create pie, line and bar charts from your rank data.

HINT: Cut, copy, and paste data from any combination of reports or ranks.

Request Effective	Target Name	Acquirer Name	Target Street Address	Target Primary SIC Code	Acquirer Primary SIC Code	Acquirer Street Address
01/04/1993	Echelon/News/Tele. Area	Cablevision Systems Corp		4841	4841	1111 Street/Avenue
04/01/1993	Premier Inc	TIC Satellite Entertainment	8885 South Chester Suite 300	4841	4841	8335 South Chester Suite 300
05/01/1993	TIC Common/Kentucky Cable Sys	Insat/Insat Partners VI LP		4841	4841	
03/03/1998	UTI Television Corp	Hicks Muse Tate & Frazer Inc	4 Richmond Square	4833	6726	200 Oneover Court Suite 1000
07/01/1998	SDC Communications Cable TV	Investor Group		4841	6798	
05/29/1998	INVESTOR GROUP	INVESTOR GROUP	890 River 1700	4819	4819	

Get the most out of SDC Platinum's Using Utilities

Use: Add a request to use the results of a previous search request.

View: For search results, see a breakdown of hits by database type.

For a report or rank requests, view documents.

Quick Display: Display a list of transactions for current search results. You can hand-pick transactions from this list for further use and/or select a specific transaction and click on the Zoom button to create a detailed "All Data" report.

Logical Set Operations: Union, Intersect, or Difference two or more of your search results.

Statistics: Calculate the sum, minimum, average, maximum, and median on any numerical item in your search result.

Top N Deals: Identify the top transactions in your search result, such as the top 10 M&A deals by value or the Top 25 common stock issues by manager fees.

Save Current Search Result: Save results of the last executed search result.

Load Saved Search Result: Load a previously saved search result.

SDC PLATINUM HISTORICAL COVERAGE:

Worldwide Mergers, Acquisitions & Alliances

U.S. Mergers & Acquisitions from 1979

International Mergers & Acquisitions from 1985

Corporate Stock Repurchase Programs from 1994

U.S. Corporate New Issues

Public Offerings from 1970

144A Offerings from 1990

Private Placements from 1981

Worldwide Syndicated Loans

from 1995

Global Public Financings

U.S. Municipal New Issues from 1966

International Municipal New Issues from 1963

Project Finance from 1992

Poison Pills from 1983

Private Equity Research from 1970

CLIENT SERVICES

United States & Canada 1.888.989.TFSD (8373)

United States 1.973.622.5200

Europe 44.(0)207.369.7944

Hong Kong 852.2533.5588

Japan 81.3.5218.6580

Thomson Financial Securities Data

22 Thomson Place

Boston, MA 02210

Phone 617.856.2704

Fax 617.330.1986

