

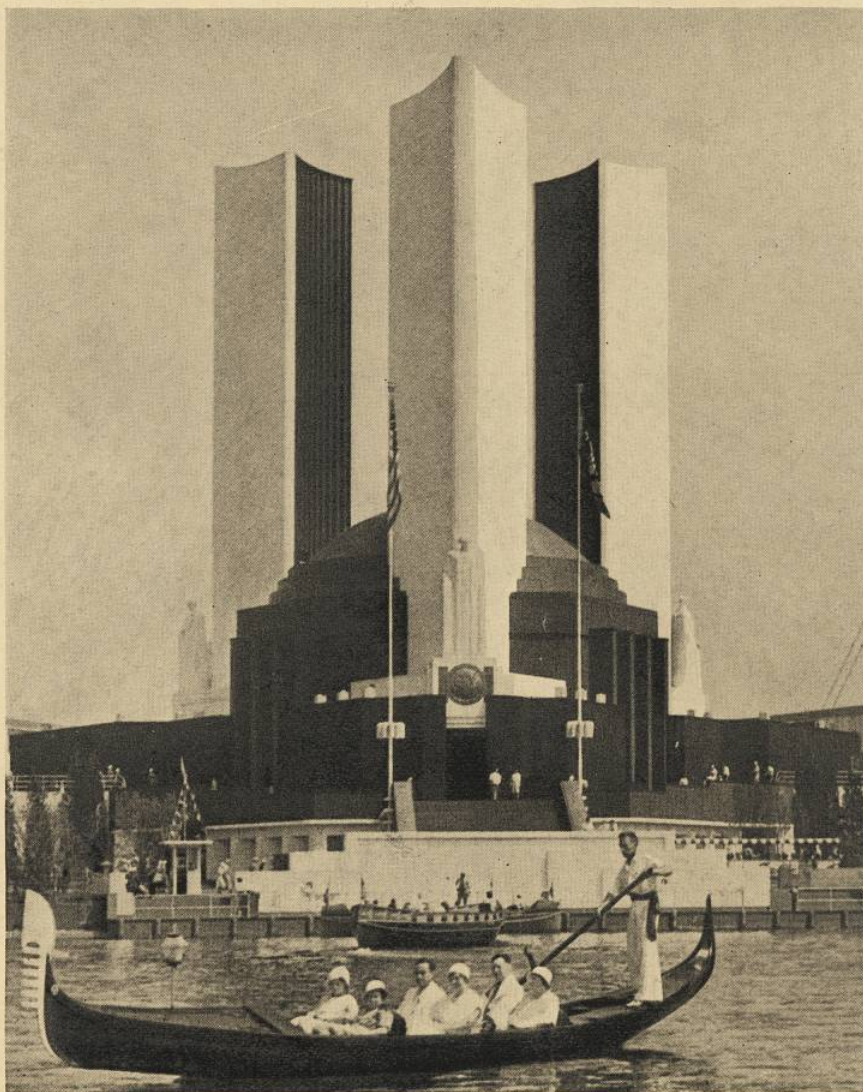
# ILLUSTRATED REVIEW

2  
**10**  
Cents

of  
**A CENTURY OF PROGRESS**

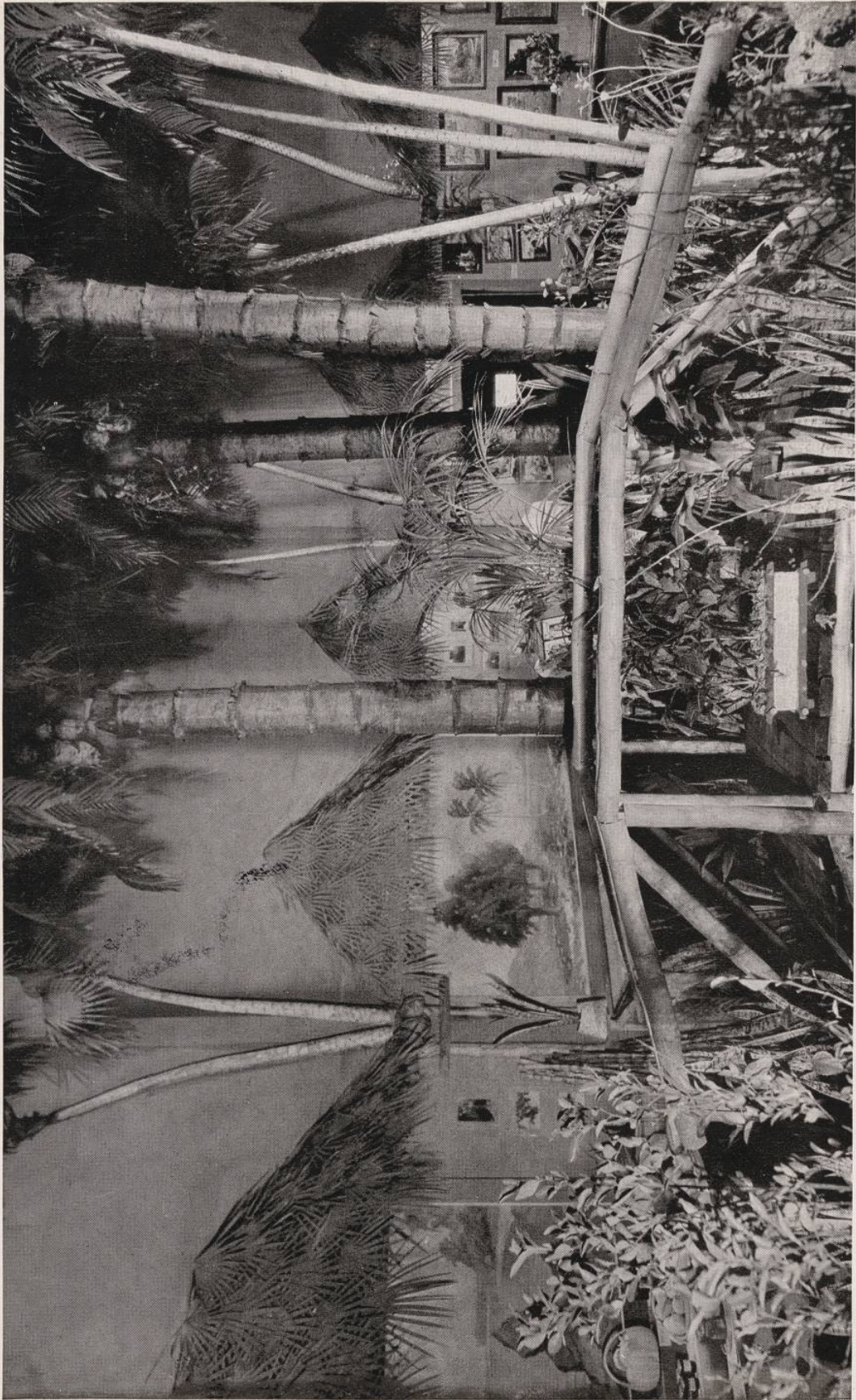
*Wm. J. McCormick, Editor*

© 1933



FEDERAL BUILDING

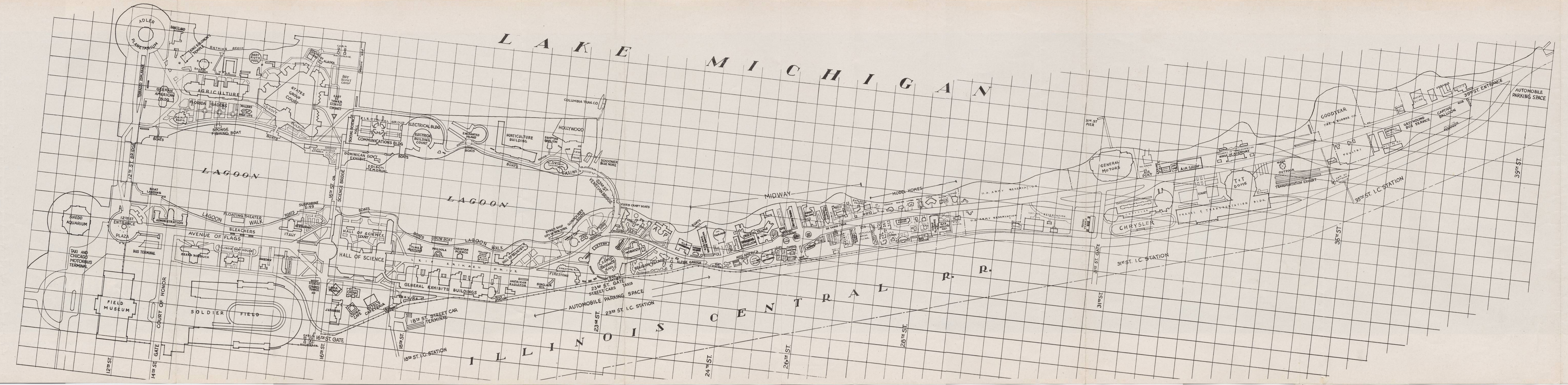
**WITH PANORAMIC VIEW, MAP  
AND COMPLETE INFORMATION**



Tropical Puerto Rico in the Hall of States.



ORIGINAL PRINTS OF THIS PANORAMA CAN BE PURCHASED AT \$2.50 EACH, FROM HARRY KOSS, (COPYRIGHT OWNER), 639 N. DEARBORN ST., PHONE DELAWARE 2339. LITHO. IN U. S. A.



# ALPHABETICAL INDEX TO REVIEW (Going South)

Exhibit or Concession	M—Mainland I—Island	Going South Street Location	Exhibit or Concession	Going South Street Location
International Business Machines		20th—M	International Business Machines	20th—M
Italian Pavilion		16th—M	Italian Pavilion	16th—M
Italian Restaurant		16th—M	Italian Restaurant	16th—M
Jantzen Bathing Beach		12th—I	Jantzen Bathing Beach	12th—I
Japan		16th—M	Japan	16th—M
Johns Manville		28th—M	Johns Manville	28th—M
Kohler of Kohler, Wisconsin		27th—M	Kohler of Kohler, Wisconsin	27th—M
Laff in the Dark		26th—M	Laff in the Dark	26th—M
Lagoon Boats		12th—M	Lagoon Boats	12th—M
Lagoon Grandstand		14th—M	Lagoon Grandstand	14th—M
Lama Temple		16th—M	Lama Temple	16th—M
Libby Owens Ford		35th—M	Libby Owens Ford	35th—M
Life		25th—M	Life	25th—M
Lincoln Village		26th—M	Lincoln Village	26th—M
Lindy Loop		26th—M	Lindy Loop	26th—M
Lion Motor Arena		26th—M	Lion Motor Arena	26th—M
Living Wonders		25th—M	Living Wonders	25th—M
Log Rolling Show		37th—M	Log Rolling Show	37th—M
Los Angeles County		16th—I	Los Angeles County	16th—I
Lumber Industries Model Home		28th—M	Lumber Industries Model Home	28th—M
Machinery Demonstration Area		35th—M	Machinery Demonstration Area	35th—M
Masonite Model Home		28th—M	Masonite Model Home	28th—M
Maya Temple		31st—M	Maya Temple	31st—M
Midget Village		26th—M	Midget Village	26th—M
Miller High Life Fish Bar		14th—I	Miller High Life Fish Bar	14th—I
Mira Mar Cafe		24th—M	Mira Mar Cafe	24th—M
Miss America 1933		24th—M	Miss America 1933	24th—M
Morocco		23rd—M	Morocco	23rd—M
Muller Pabst Cafe		20th—M	Muller Pabst Cafe	20th—M
Nash Motors		35th—M	Nash Motors	35th—M
News Stands		12th—M	News Stands	12th—M
Old Heidelberg		24th—M	Old Heidelberg	24th—M
Old Mexico		38th—M	Old Mexico	38th—M
Old Plantation Show		26th—M	Old Plantation Show	26th—M
Oriental Village		25th—M	Oriental Village	25th—M
Outdoor Gardens		28th—M	Outdoor Gardens	28th—M
Owens Ill. Glass		28th—M	Owens Ill. Glass	28th—M
Pabst Blue Ribbon Casino		23rd—I	Pabst Blue Ribbon Casino	23rd—I
Pal-waukee Airport		31st—M	Pal-waukee Airport	31st—M
Pantheon		24th—M	Pantheon	24th—M
Pilot Air Ride		25th—M	Pilot Air Ride	25th—M
Pirate Ship		26th—M	Pirate Ship	26th—M
Porcelain Enamel Model Home		28th—M	Porcelain Enamel Model Home	28th—M
Poultry Show		35th—M	Poultry Show	35th—M
Puerto Rico Exhibit		16th—I	Puerto Rico Exhibit	16th—I
Radio and Communications Building		16th—I	Radio and Communications Building	16th—I
Rapids		26th—M	Rapids	26th—M
Re-inforced Brick Model Home		28th—M	Re-inforced Brick Model Home	28th—M
Rickshas		12th—M	Rickshas	12th—M
Ripley's Odditorium		26th—M	Ripley's Odditorium	26th—M
Romance of Advertising		32nd—M	Romance of Advertising	32nd—M
Rostone Model Home		28th—M	Rostone Model Home	28th—M
Rotisserie (Eitel's)		12th—M	Rotisserie (Eitel's)	12th—M
Rutledge Tavern		26th—M	Rutledge Tavern	26th—M
Sears Building		14th—M	Sears Building	14th—M
Seminole Indian Village		26th—M	Seminole Indian Village	26th—M
Shedd Aquarium		12th—M	Shedd Aquarium	12th—M
Shooting Gallery		26th—M	Shooting Gallery	26th—M
Show Boat, "Cotton Blossom"		18th—M	Show Boat, "Cotton Blossom"	18th—M
Sinclair Exhibit		22nd—M	Sinclair Exhibit	22nd—M
Sky Ride		16th—I	Sky Ride	16th—I
Soldier Field		14th—M	Soldier Field	14th—M
Solomon's Temple		12th—I	Solomon's Temple	12th—I
Spanish Pavilion		25th—M	Spanish Pavilion	25th—M
Spoor Spectaculum		23rd—I	Spoor Spectaculum	23rd—I
States Building		12th—I	States Building	12th—I
Stockholm (Carl)		18th—M	Stockholm (Carl)	18th—M
Stransteel Model Home		28th—M	Stransteel Model Home	28th—M
Streets of Paris		23rd—M	Streets of Paris	23rd—M
Submarine S49		16th—M	Submarine S49	16th—M
Thompson's Restaurant		26th—M	Thompson's Restaurant	26th—M
Temple of Jehol		16th—M	Temple of Jehol	16th—M
Terrazo Promenade		12th—I	Terrazo Promenade	12th—I
Texas Oil Co.		35th—M	Texas Oil Co.	35th—M
Thrill House		23rd—I	Thrill House	23rd—I
Time and Fortune Building		18th—M	Time and Fortune Building	18th—M
Travel and Transport Building		35th—M	Travel and Transport Building	35th—M
Two-Headed Baby		26th—M	Two-Headed Baby	26th—M
Ukrainian Pavilion		38th—M	Ukrainian Pavilion	38th—M
United States Regular Army Camp		28th—M	United States Regular Army Camp	28th—M
Victor's Vienna Cafe		28th—M	Victor's Vienna Cafe	28th—M
W. & J. Sloane		28th—M	W. & J. Sloane	28th—M
Walgreen's Drug Store		23rd—M	Walgreen's Drug Store	23rd—M
Whale		24th—M	Whale	24th—M
Wheel Chairs		12th—M	Wheel Chairs	12th—M
Wings of a Century		35th—M	Wings of a Century	35th—M
World a Million Years Ago		23rd—M	World a Million Years Ago	23rd—M

# REVIEW of A Century of Progress

By WM. J. McCORMICK

**Art Institute**—is exhibiting collections from all over the world, including some of the world's most famous masterpieces. The estimated value of the special works of art arranged for this World's Fair is \$25,000,000.00.

The Art Institute is located on Michigan Avenue at Jackson Boulevard, outside the Fair Grounds. Admission 25c.

## 12th STREET — (Mainland) — NORTH ENTRANCE—going south.

**Field Museum**—Outside the turnstiles, admission free three days a week, other days 25c. Exhibits devoted to four outstanding branches of natural science, Anthropology, Botany, Geology, and Zoology, will be found in this immense museum.

**Shedd Aquarium**—Also outside the turnstiles. Free three days a week. This is the largest and finest aquarium in the world.

**Lagoon Boats**—and Lagoon Tours, inside the turnstiles. Lagoon boats make complete tours of both the North and South Lagoons, having convenient docks at all the important Exhibition buildings. Tours 50c.

**Greyhound Buses**—This is the north terminal within the Grounds, and you can board buses here to travel over the high speedway as far south as 39th Street. The Island buses also leave from this terminal and make a complete trip on Northerly and Southerly Island as far south as 23rd Street. The bus fare is 10c. An additional service is available from this gate on the buses, the Greyhound Sightseeing Tour at 50c will give you a complete tour of the Fair Grounds.

**Wheel Chairs and Rikshas**—are especially comfortable as a mode of transportation within the Fair Grounds. The rates are \$1.00 per hour for the wheel chairs and \$1.25 per hour for the rikshas. This includes the competent guide service of the young men who provide the means of locomotion.

**Eitel's Rotisserie**—Good food and drinks at a reasonable a la carte. 12th Street near Bridge to Islands.

**News Stands**—For newspapers, guides, and programs, the little shops where you can buy your walking sticks, souvenirs, hot dogs, or ice cold drinks. Here also is the bridge to Northerly Island and the Planetarium.

## 14th STREET—(Mainland)—going south.

**Court of Honour**—Between Soldier Field and the Administration Building.

**Lagoon Boat Landing.**

**Administration Building**—Admission on official business only. Contains general offices of A Century of Progress, newspaper and press offices, Western Union and Postal Telegraph.

**Soldier Field**—Admission price varies. This stadium is used for special events, capacity 125,000, and ordinarily is outside the Fair Grounds.

**Avenue of Flags**—The Avenue of Flags from the Administration Building south to Sixteenth Street.

**Sears Building**—Admission free. Contains official registration Bureau, B & G Cafeteria, travel and information bureaus, and a very interesting Sears, Roebuck & Company display.

**Lagoon Grand Stand**—Twelve thousand seats, admission free. This is the **Floating Theater** where A Century of Progress stages complete musical programs, shows and reviews, sporting events, such as amateur boxing, etc., on the Floating Theater stage in front of the lagoon grandstand seats.

**Illinois Host House**—Contains an Abraham Lincoln exhibit in one wing, also reception room and lounge where Illinois receives her visitors. Admission free.

**Sweden**—This exhibit has some very fine displays of glassware, pewter, furniture and textiles. Admission free.

**Czechoslovakia**—Admission free. This is an industrial exhibition of products manufactured in Czechoslovakia and contains a great variety of small novelties, an interesting display of various crystal products, and some of the fine art work from Czechoslovakia. A very interesting exhibit.

**Czechoslovakian Restaurant**—Just south of main building. Serving that different native food, including imported Prague Sausage, imported Pilsener Beer. Colorful Czechoslovak atmosphere and entertainment. Outdoors is the Garden Restaurant. Prices reasonable.

**Lagoon Boat Landing.**

**Italian Pavilion**—This is an official Italian Government exhibit. Very much worth while. The Italian fliers, on completing their massed flight from Italy under General Balbo, were present in this building during the official ceremony. Admission free.

**Italian Restaurant**—Italian cooking to tempt your palate at reasonable prices.

**Venetian Gondoliers**—These singing gondoliers will take you for a romantic tour of the lagoon, at 50c up.

**Chapel Car "St. Paul"**—A chapel car of the Catholic Extension Society. Contains more than 300 interesting exhibits.

## 16th STREET—West terminal of the Sky Ride.

The observation tower 628 feet above the ground. Admission 40c and 25c.

**Bendix Lama Temple**—Temple of Jehol—an exact replica of the famous Chinese Temple of Lama. Complete in every detail with a gold leaf roof. This exhibit will delight your artistic sense. Admission 25c.

**Japan**—Presents the whole process of silk manufacture, all the way from the cocoon to the finished product, together with Japanese agricultural and industrial exhibits. A landscaped Japanese tea garden will intrigue you with a classical tea ceremony following etiquette which goes back hundreds of years performed here by Japanese girls. Pearls valued at \$500,000.00 are exhibited here. Admission free.

**China**—A typical dwelling of the well to do in the Republic of China presents ancient and modern Chinese art. Modern Chinese jade is represented with a seven story carved jade pagoda, fifty inches high which required ten years to complete. Ancient jade is presented by appointment and at fixed hours. Excellent embroidery and porcelain art are on display in the Chinese Building. Admission to the building is free. The modern pagoda charges an admission price, and the Chinese theater with its Chinese acrobatic and juggling show also charges an admission fee. Lectures, educational and non-political daily at 6 P. M. are free.

**Chinese Restaurant**—Entering south of the Chinese village through a very artistic and valuable carved Chinese arch, you can enjoy good cooking and food in an Oriental setting at 35c and 50c.

## 16th STREET to 18th STREET.

**Lagoon Boat Landing.**

**Eitel's Cafeteria**—This is a large cafeteria just west of the Hall of Science and north of 18th Street entrance. Prices are very reasonable. Coffee is five cents. Food is 5, 10 and 15c.

**Hall of Science**—Admission free. This is the largest exhibit building on the Grounds, and rates number one in attendance. Nightly, at 8:35 P. M. in the Court of Honor, the Hall of Science presents the Arcturus ceremony, where the light of the star Arcturus, forty light years away from the earth is brought from one of four observatories by Western Union and amplified by General Electric and Westinghouse Electric instruments, so that the light from this star actually turns on the lights on all of the exhibit buildings at A Century of Progress during this ceremony. Also on the east side on the main or second floor is located the Great Hall, wherein you can see Professor Piccard's balloon, the stratosphere ball in which he pierced the stratosphere far above the earth. Beebe's bathosphere in which Dr. Beebe rested on the bottom of the ocean. A complete oil refinery, a display in miniature showing the mining of gold, lead and zinc. Also on the main floor, south of the Great Hall, is the mechanical man, and on the north on the ground floor, you will find the transparent man from Dresden, Germany, of great interest to students of medicine.

Four lecture halls, three on the ground floor and one on the main floor, present scientific lectures daily. Consult the newspapers for your daily programs. On the ground floor, southeast corner of the Hall of Science, you will find the Bridge Hall.

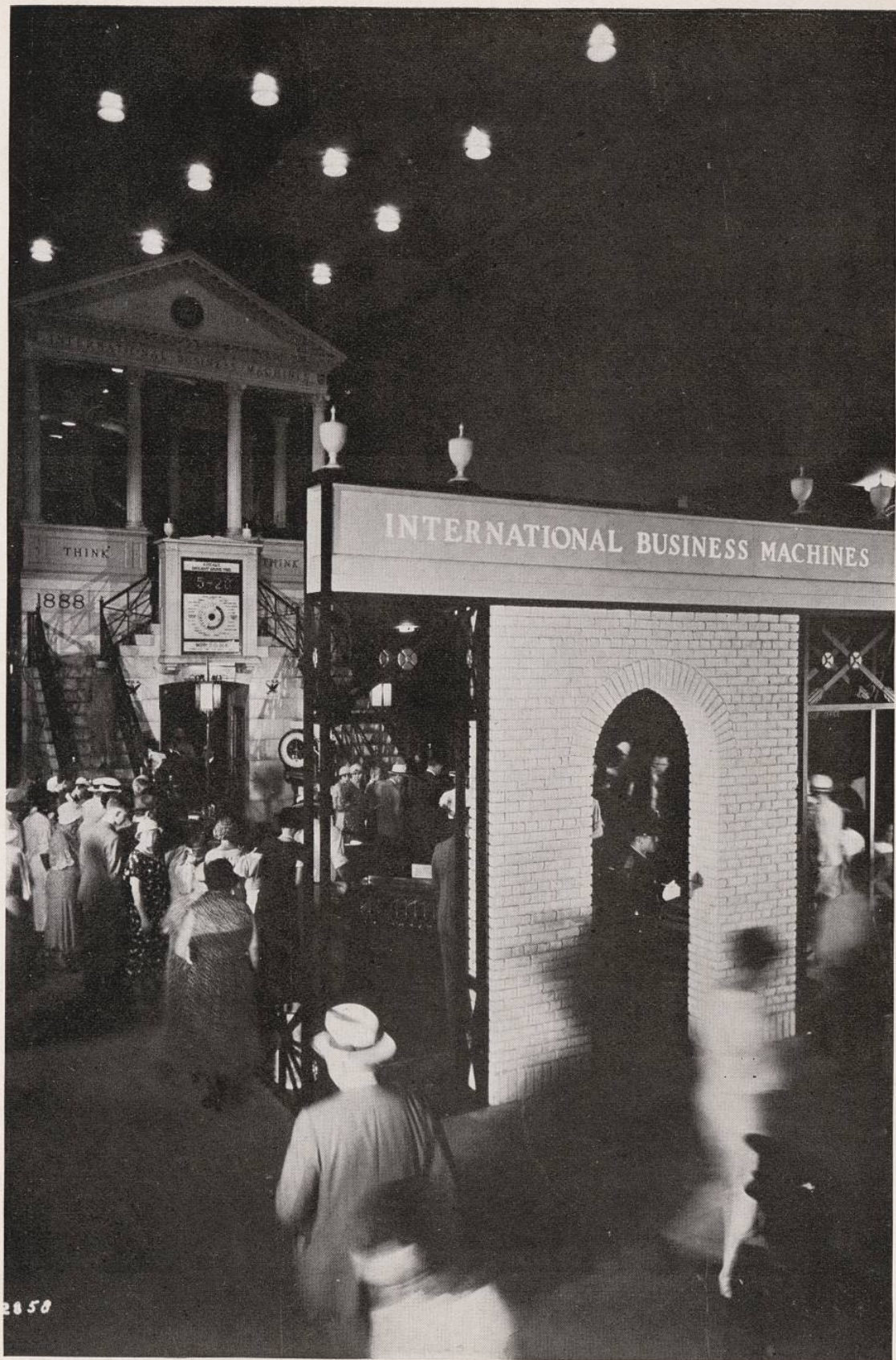
**Science Bridge**—(16th Street)—Crosses Lagoon to Islands, from Hall of Science to Federal and States Buildings, and Electrical Group.

**Submarine S49**—Admission 25c and 40c. The only U. S. Submarine fully equipped ever on exhibition on the Great Lakes.

(Continued)



Typical Dwelling of the well to do in China.



International Business Machines Corporation Display in General Exhibits Building No. 3.

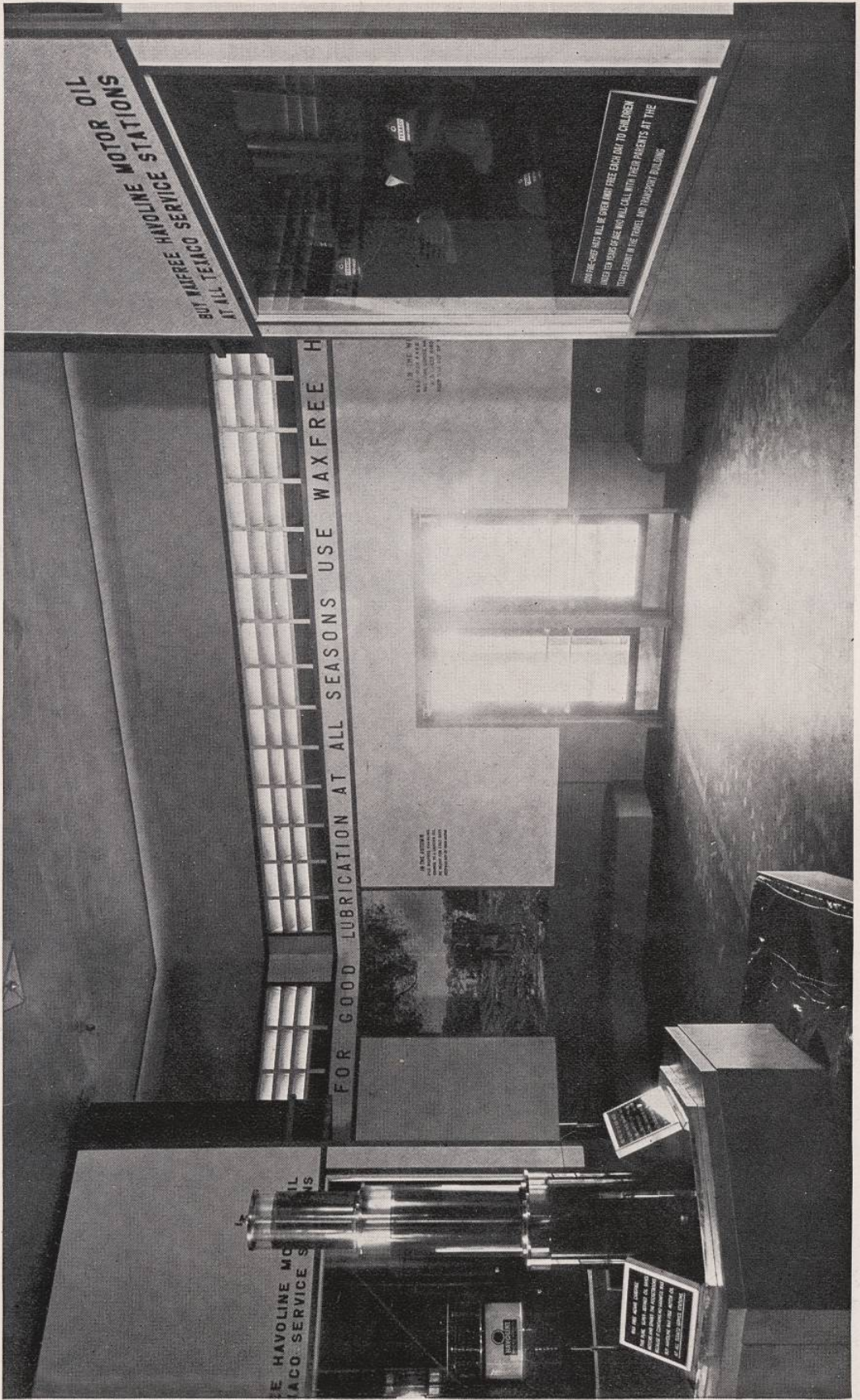




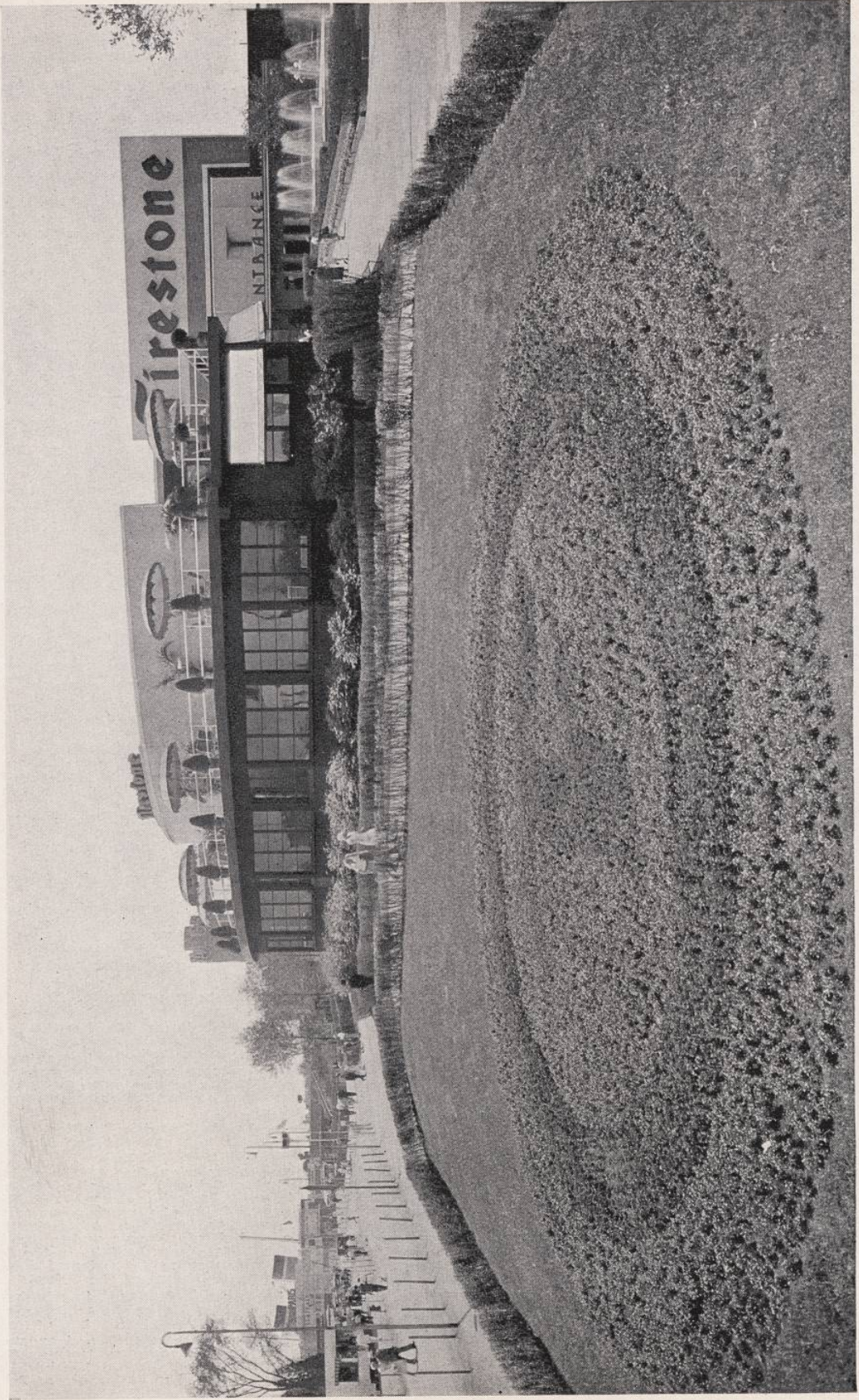
A Battle of Dinosaurs.



The Sinclair Exhibit takes us back 100 million years.



Restful Havoline Reception Room below the Giant Thermometer.



The Firestone Building and the Singing Fountain.

## 18th STREET—(Mainland) — Street Car gate,—going south.

### Children's Free Playground.

**General Exhibits**—Group of five buildings. Building No. 1—Minerals. Steel manufacturing display. Big utility and coal companies have displays here. Upstairs you will find an exhibit by Brunswick-Balke Company of new and old time bars. Building No. 2—Oil—Graphic Arts. For your special attention an exhibit by the Gulf Refining Company, also the Guttenberg Press exhibited by Cuneo Press and special exhibits of the printing trades and paper foundations. Building No. 3—Furniture and Office Equipment. Elaborate displays of business machines, etc. Building No. 4—Jewelry and cosmetics. In this building is the diamond mine, admission fifteen cents. Everything else in this entire group is free admission. On the ground floor of building No. 4 are displayed famous diamonds and other jewels. Also, an interesting display of Ipana tooth paste. Building No. 5—Hosiery and shirts are manufactured complete in this building. Upstairs in Building No. 5 Prince U. Salie, an Indian prince, has on free display a beautiful collection of star sapphires, diamonds, colored stones of all kinds, including rubies, opals, etc. This is a very valuable and beautiful collection.

**International Business Machines Corporation of New York City**—General Exhibits Group, Pavilion No. 3. Operating demonstrations of modern machine methods for electric accounting, electromatic typewriting, automatic time keeping and weighing. The products used are saving time and money for all classes of business in 79 countries of the world. Divisions Represented: The Tabulating Machine Division, International Time Recording Division, Dayton Scale Division, International Scale Division, Electromatic Typewriters Division.

**Carl Stockholm**—in General Exhibits Building No. 4. World's Fair Cleaners, Valet Service while you wait. Exhibiting the operation of ultra modern cleaning equipment.

**Time and Fortune**—A restful reading room, beautifully furnished and the free use of periodicals from all over the world. Free admission.

**Cotton Blossom Show Boat**—This boat, the Cotton Blossom, recalls "meller drammers", reminiscent of the old days on the Mississippi River where the villain is hissed and the hero applauded. Admission 10, 25, and 35 cents.

**Christian Science Monitor**—Has a large reading room for your comfort. Admission free.

**Muller Pabst Cafe**—Restaurant and bar. Reasonable a la carte prices. Located on the west side of the South Lagoon.

**Hall of Religion**—Admission free. On display here in a very dignified arrangement you will find the great Chalice of Antioch, the three-hundred year old Icon from St. Petersburg, Russia, the Jenny Lind Chalice, the Andrew Mellon stained glass windows, Lorado Taft's bas-relief of "Come unto me", a modern painting of Christ called the "Nazarene" by Henry Stanley Todd, representing Christ as a Nordic or Anglo-Saxon type, also interesting exhibits by the Salvation Army, Near East Foundations, and the Volunteers of America.

**American Radiator and Standard Sanitary**—Admission free. Spanish flower gardens, model bathrooms and complete air conditioning display.

**Sinclair**—Admission free. In a setting of prehistoric rocks, pines, ferns and other vegetation, believed to accurately depict the pre-glacial period, Sinclair produces the mammoth dinosaurs who roamed that strange world of from 80 to 100 million years ago. The breathing, swaying, lifelike creatures give an interestingly animated picture of the world at the time Sinclair's crude was melting.

**Firestone**—Admission free. An industrial display showing tires manufactured from first to last operation. Outside the north entrance of the Firestone Building you will find the singing fountain, the only one of its kind in the world, synchronising music with colored lighting effects on the water in the fountain—the lights and the water change with the music.

### Lagoon Boat Landing.

**Byrd's Polar Ship**—"The City of New York." Admission 25c. This is the ship in which Byrd explored the South Pole.

## 23rd STREET—(Mainland).

This is a main entrance for street cars, buses, and pedestrians.

**World a Million Years Ago**—Admission 25c. Showing the ages of man in a complete and detailed action setting.

**Walgreen's Drug Store**—Longest soda fountain in the world.

**Havoline Thermometer**—Admission free. Largest in the world, 218 feet high. Neon register. Souvenir post cards free on request.

**The Hub**—Henry C. Lytton & Sons Department Store.

**Doughnut Shop**—Maxwell House Coffee, doughnuts and meals served.

**Infant Incubators**—Admission 25c. Special care of living babies.

**Streets of Paris**—Admission 25c. No cover charge. A gay atmosphere of Paris night life with street scenes, famous cafes, peep shows, shops, and dancing. At the foot of 23rd Street on the lake. Floor show includes a diving act with Olympic stars that is free after you enter Paris.

**General Cigar Company**—Admission free. Industrial exhibition manufacturing White Owl cigars in the building.

**Morocco**—Admission free. The Moorish atmosphere with shops, music, and governmental exhibits are displayed in the Moroccan Village.

**A & P Carnival**—Admission free. Beautiful setting on the lake for your rest and comfort. For your entertainment A & P marionette revue, Harry Horlick and the A & P Gypsies and George Rector's Cooking School.

**Belgian Village**—Admission 25c. Very interesting architectural arrangement of authentic Belgian buildings dating from 12th to 16th century. Daily, the village presents Belgian folk dances and other entertainment. Within the village you will find much to interest you, besides the restaurants and cafes where good food and drink are served.

**Old Heidelberg**—Dinner \$1.25 and up. A very popular dining place with good food and plenty of entertainment, including Louie's Hungry Five, well known radio entertainers.

**Alpine Gardens**—Admission free. Rock gardens, landscaping display.

**Hungary**—Admission free. An industrial exhibit of Hungarian products.

**Chris-Craft**—Speed boats to and from the Wrigley Building. Dock at the west end of the 23rd Street Bridge. Rates \$1.00 per passenger. These boats can be boarded either from the 23rd Street Bridge or the Streets of Paris.

## 24th STREET—The North End of the Midway (going south).

**The Cyclone**—Safety steel coaster. Admission 25c.

**The Whale**—Admission 10c. Midway show exhibiting a whale and an octopus.

**Century Grill**—Very modern grill. One of a dozen located in convenient places throughout the Fair Grounds. Sandwiches 20c. Meals, of course, are higher.

**Greyhound Bus Station**—Center of the Midway—fare 10c.

**The Pantheon**—A World War spectacle—painting. 50 feet high, several hundred feet long. Admission 25c. Interesting lecture points out the figures and points of interest.

**Gorilla Villa**—Has live gorillas as part of the show. Admission 10c.

**Auto Scooter**—Drive your own auto. Good fun. Admission 15c.

**Miss America 1933**—Admission 25c. See the beautiful lady who was selected Miss America 1933.

**Spanish Pavilion**—Admission free. A Spanish industrial exhibit including some very fine tapestries from the 16th and 17th centuries and of the present day. There are many beautiful objects to arrest your attention here.

**Mira Mar Cafe**—In the Spanish Pavilion on the lake. Advertising all you can eat for 50c with a Spanish orchestra to entertain you.

**Oriental Village**—Admission free to the village. Side shows set in an Oriental atmosphere include Hadj Mahamed, aged 93, who charms the King Cobra, Ernie Young's Oriental fantasies, one of the biggest floor shows on the grounds. Admission 25c. Dine and dance with Ernie Young under the big top, a massive tent located on the lake in the Oriental Village. You can enjoy the Oriental atmosphere and the spicy side shows of the Orient.

**Pilot Air**—A new ride just opened in which the passenger has some control over the whirling airplanes. Admission 25c.

**Battle of Gettysburg**—Admission 25c. A spectacle of the Civil War days with competent lecturer. This spectacle was on display at the old World's Fair in 1893 and is now presented at A Century of Progress 1933.

(Continued)

Inside the  
Belgian  
Village.



Typical,  
Picturesque  
Street  
Scenes.



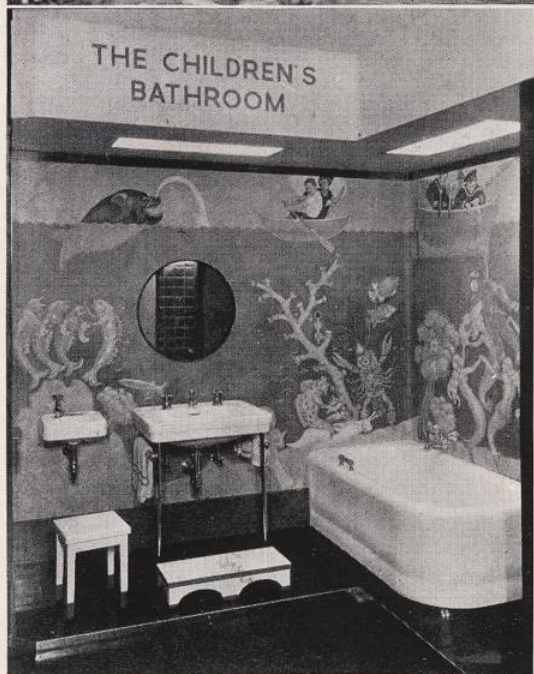


*Left*—Greenwich Village  
Artists' Colony on the  
Midway.

*Right*—Lincoln's Birthplace  
in the Lincoln  
Village.



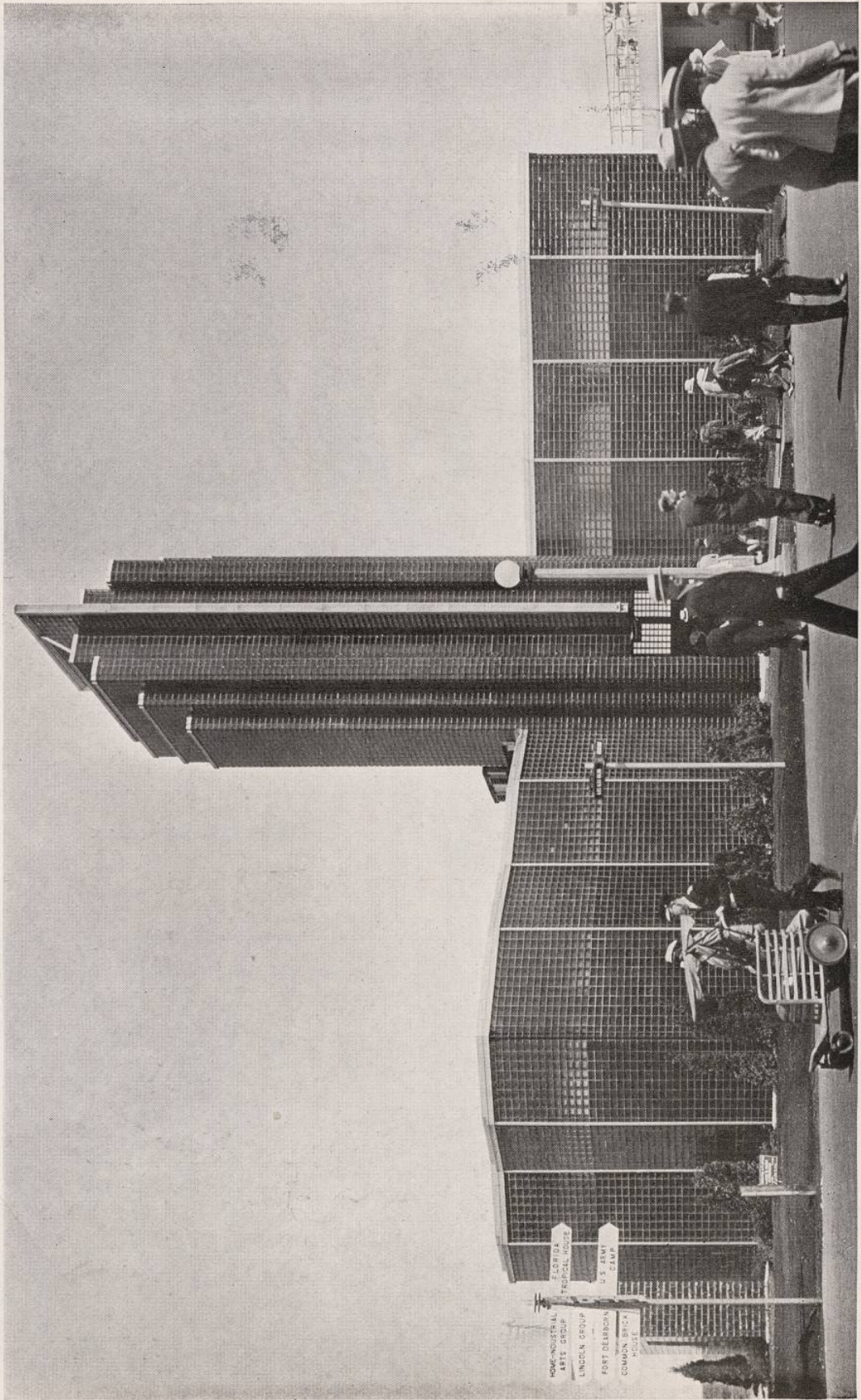
Boardwalk Midway and Beach on Northerly Island.



*Above*—Kohler's beautiful Building in the Home Planning Section.  
*Left*—An ultra modern Children's bathroom.

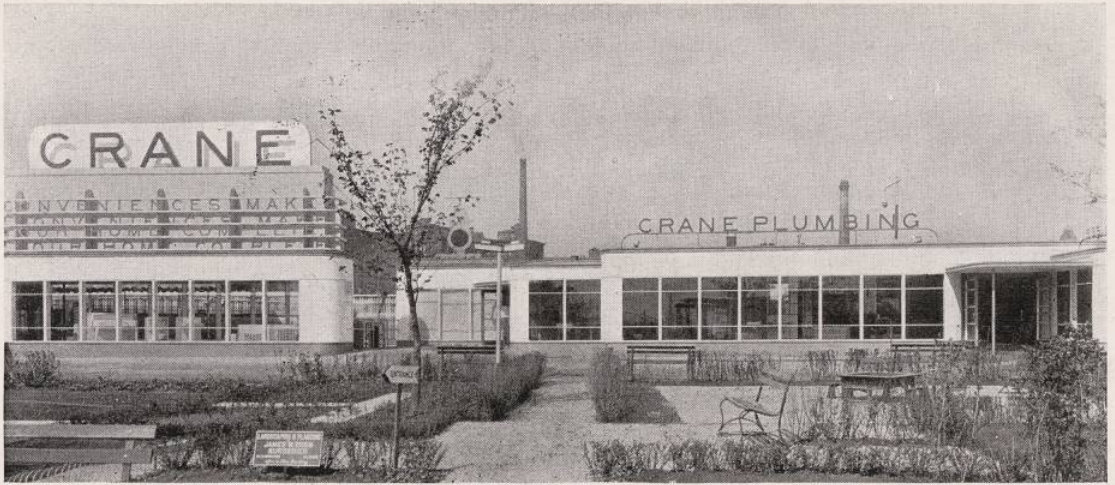
*Right*—Interior of Kohler Building showing murals depicting life in Kohler, Wisconsin.





Glass Block Building of the Owens-Illinois Glass Co.





*The Old*



*The New*

*Top—  
Crane  
Exhibit  
Building  
in the  
Home  
Planning  
Section.*



*Left—  
Animated  
Exhibit  
in the  
Electrical  
Building  
showing  
Industrial  
Use of  
Valves  
and  
Fittings.*

**With Crane Co. at the World's Fair.**

**Life**—Admission 25c. For adults only. A biological exhibition showing life from its earliest stages of conception.

**Lion Motor Drome**—Motorcycle and automobile in a motordrome where live lions ride with the men and women drivers. Admission 25c.

**Lindy Loop**—Admission 15c. A Midway thriller ride. You will like it.

**Adobe House**—Edwards' Hickory pit roasted meats. Dinner 40c and up, also a la carte service. Eat barbeque sandwiches in a picturesque setting.

**Living Wonders**—Admission 10c. Good freak show.

**The Funnies**—A ride that makes you laugh. Admission 10c.

## 26th STREET—Bus Station (Center of Midway)—going south.

**The Rapids**—Admission 10c. One of the fastest rides on the Midway.

**Flying Turns**—Admission 25c. Airplane thrills in a Midway ride.

**Bozo**—Is he alive? A new ride with a kick. Admission 15c.

**African Dips**—Admission 25c. Throw the ball and knock the Africans into the water.

**Greenwich Village**—Admission free. Sketches from 50c to \$10.00. Paintings from 50c to \$1500.00. Well known artists are sketching and painting in the village at all hours.

**Shooting Gallery**—Target practice with .22 rifles.

**Hey Dey**—The whoopla of Midway rides. Admission 10c. A popular ride.

**Midget Village**—Admission 25c. Includes a free show, "Midget Village Follies", and a visit in this complete village populated by one hundred happy midgets. They have a Mayor, City Hall, Midget Hotel, drug store, grocery store, etc.

**Laff in the Dark**—Admission 15c. A good ride through the dark.

**Old Plantation Show**—Admission 25c. All-colored song and dance revue.

**Darkest Africa**—Admission 25c. An African native show.

**Thompson's Lunchroom**—Only Thompson Restaurant at the Fair. Chicken pie 35c—and usual bill of fare.

**Two-Headed Baby**—Admission 15c. Exhibiting a baby with two heads.

**Giant Monster Show**—Admission 10c. Showing big snakes and lizards, and for an additional 10c, a man who eats live snakes and toads.

**Ripley's Odditorium**—Admission 40c. On 16 stages Ripley presents forty of his "Believe it or Not's" in person for your entertainment.

**Fort Dearborn**—Admission 25c. A replica of old Ft. Dearborn, an educational exhibit.

**De Saible Cabin**—Admission free. This cabin was built by the National De Saible Memorial Society.

**Rutledge Tavern**—Serving a very popular \$1.00 dinner.

**Lincoln Village**—Admission 25c. Historically exhibiting Lincoln's birth place, his Indiana home, the Lincoln-Berry Store, and the Wigwam, where he was nominated for President.

**Havana Rhumba Show**—Cuban band and girls from Havana. Hot show. Admission 25c.

**Seminole Indian Village**—Admission 10c. This show includes a village of Seminole Indians from Florida. Wrestling with live alligators, and a high-diver. An interesting show.

**Kohler of Kohler Building**—Kohler Co., Kohler, Wisconsin, manufacturers of plumbing fixtures, heating equipment, and electric plants. Modern developments in these important fields displayed, beautiful bathrooms in color, twelve remarkable photo murals and diorama depict Kohler Village, a town-planned Wisconsin industrial community, American in spirit and government. Admission free.

**Outdoor Gardens**—Beautiful gardens adjoining Kohler exhibit, and marking the start of a series of model homes. Admission free.

**Masonite Model Home**—Admission free.

**Victor's Vienna Cafe**—Specialties, goulash 40c, Vienna frankfurters 30c. Floor show includes the Alpine yodelers and Eddie Sheasby's band.

**Rostone Model Home**—Admission free.

**Lumber Industries Model Home**—Admission free.

**Johns-Manville**—Exhibit of asbestos and Johns-Manville products. Admission free.

**Stransteel Model Home**—Free admission.

**Porcelain Enamel Model Home**—Free admission. Furnished through the co-operation of the Ladies Home Journal.

**Good Housekeeping Model Home**—By Good Housekeeping magazine. Admission free.

**Re-inforced Brick Model Home**—Admission free.

**Owens-Illinois Glass Block Building**—An unusual and colorful building, erected by the Owens-Illinois Glass Company, Toledo. It is of glass blocks, with a central tower fifty feet high. The blocks are translucent, of many colors, and twice the size of ordinary bricks. This unique building houses a display of the company's latest developments in glass containers and industrial materials. Admission free.

## 28th STREET—Greyhound Bus Terminal—going south.

**Crane Company**—Interesting plumbing and heating exhibits. Displays contrast: the bowl and pitcher discomforts of the gay nineties with modern bathrooms designed for health, comfort and convenience. There are loads of ideas for those interested in building or remodeling.

**Home Planning Hall**—Admission free. This is a large exhibit building in which the latest home making displays are demonstrated.

**Gas Industries Exhibit**—Admission free. Heating and refrigeration by gas is on exhibition among other industrial gas exhibits.

**House of Tomorrow**—A model home. Admission 10 cents.

**W. & J. Sloane**—Furnished model home. Admission free.

**Florida Tropical House Model Home**—Admission free.

**United States Regular Army Camp**—On duty at the World's Fair Grounds. Also the Army band. Many impressive U. S. Army ceremonies are witnessed by the visitors to the World's Fair. Admission free.

## 31st STREET — A main entrance—going south. Greyhound Bus Station.

**Chrysler Motors**—This impressive building displays all Chrysler Motors Products including Plymouth, Dodge, DeSoto, and Chrysler automobiles. Admission free. Barney Oldfield and his staff of drivers will take you for a free ride in your favorite car on a specially constructed track within the Chrysler exhibit. There is a special speed demonstration, full of thrills, every hour. You can enjoy a free motion-picture show in the air-cooled Chrysler theater.

**Ameriann Indian Village**—Six tribes, over two hundred American Indians are camped in these villages. Admission is free to the village, and the Indian trading post. In the Indian theater the admission is 25c. Some of the dances in their picturesque settings are the Yeibechi by the Navajos, the Omaha and Dog Feast by the Sioux, the Green Corn and Snake dances by the Winnebago Tribe, the Eagle and Butterfly by the Hopi. Featured stars are Chief Evergreen, famous bird and animal call imitator and Chief Silver Tongue, the great Indian tenor.

**Maya Temple**—Admission free. This large building is a demonstration of the ancient art of the Mayan Indians of Central America.

**Century Grill**—Reasonably priced and a very modern grill.

## 31st STREET PIER—Steamer dock and speed boat landing — east of General Motors Bldg.

**General Motors**—This large building prominently located on the lake marks the start of the motors, airplanes, and transportation group. Within the building are displayed all of General Motors' principal products and automobiles. An educational part of this exhibit is the complete Chevrolet assembly line where Chevrolet automobiles are completely assembled ready for delivery. Downstairs they have an air-cooled theater for your rest and entertainment. Admission is free.

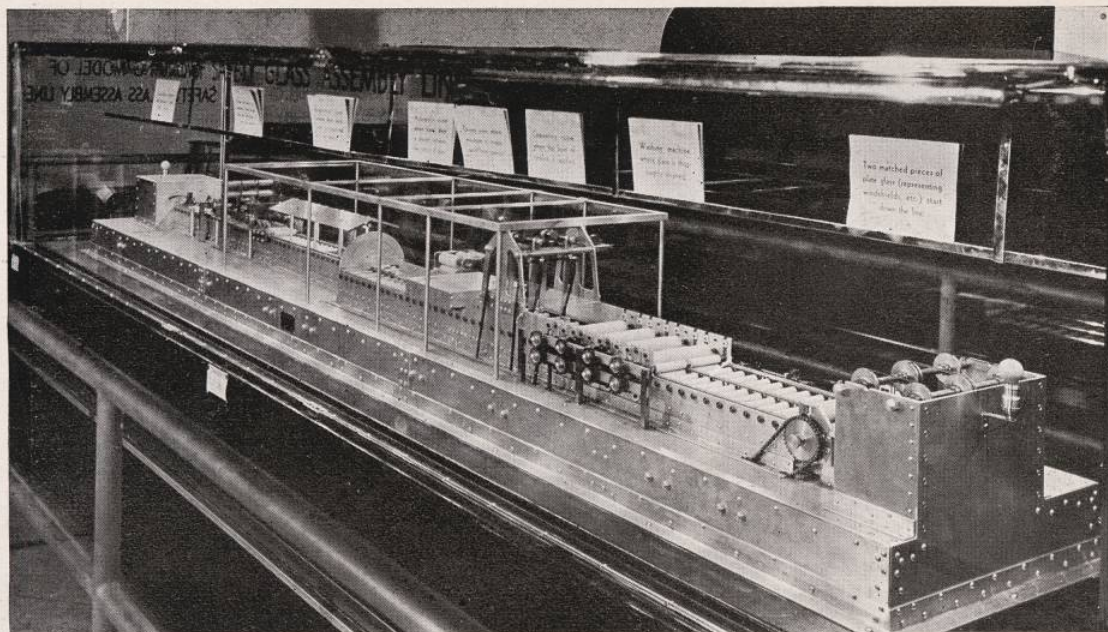
## 32nd STREET — Bus Terminal — going south.

**Pal-waukee Airport**—Giant Sikorsky amphibian 10 passenger air ships take you for a 25 mile flight

(Continued)



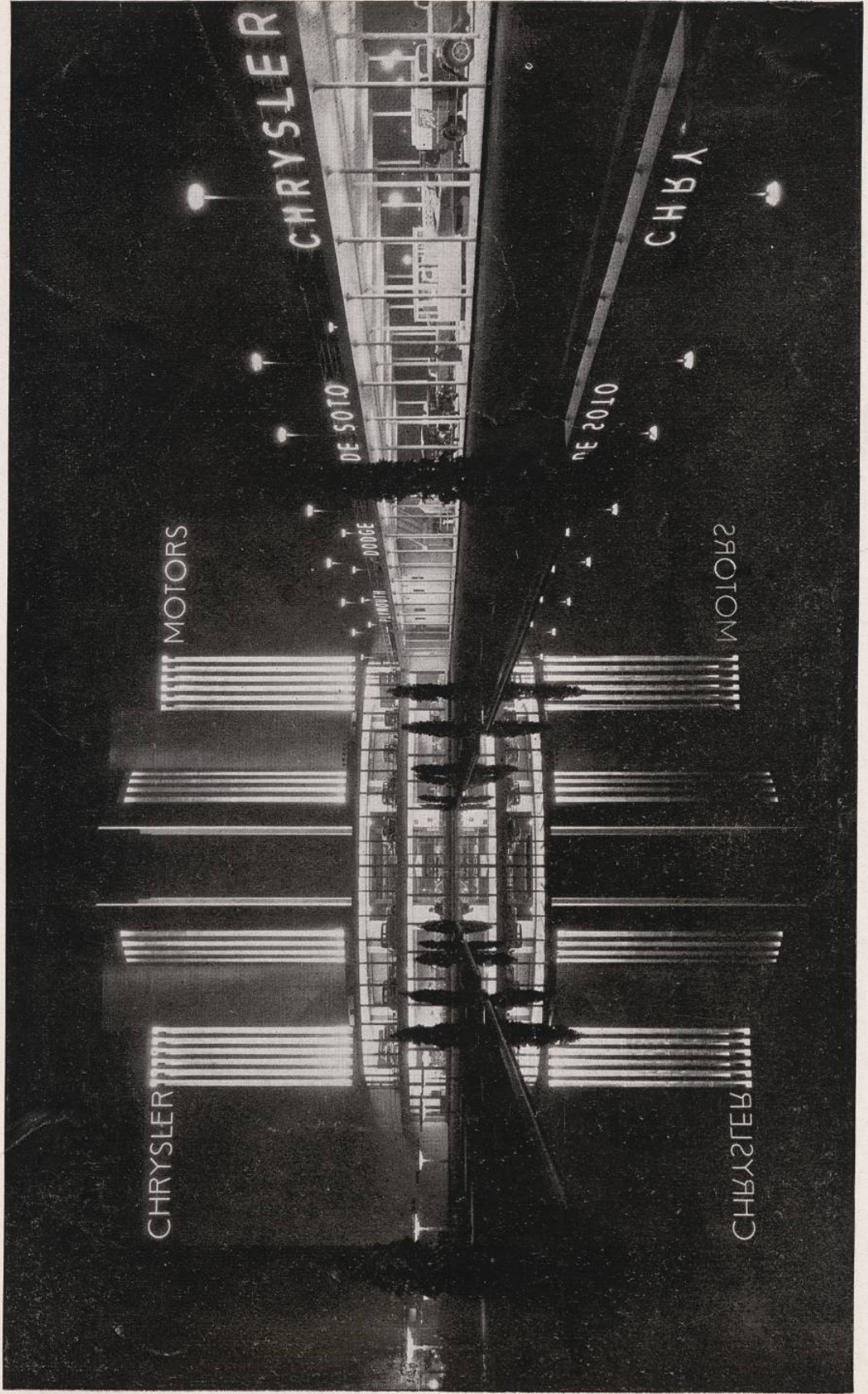
American Indian Village. Inset—General Balbo and Indian Chief.



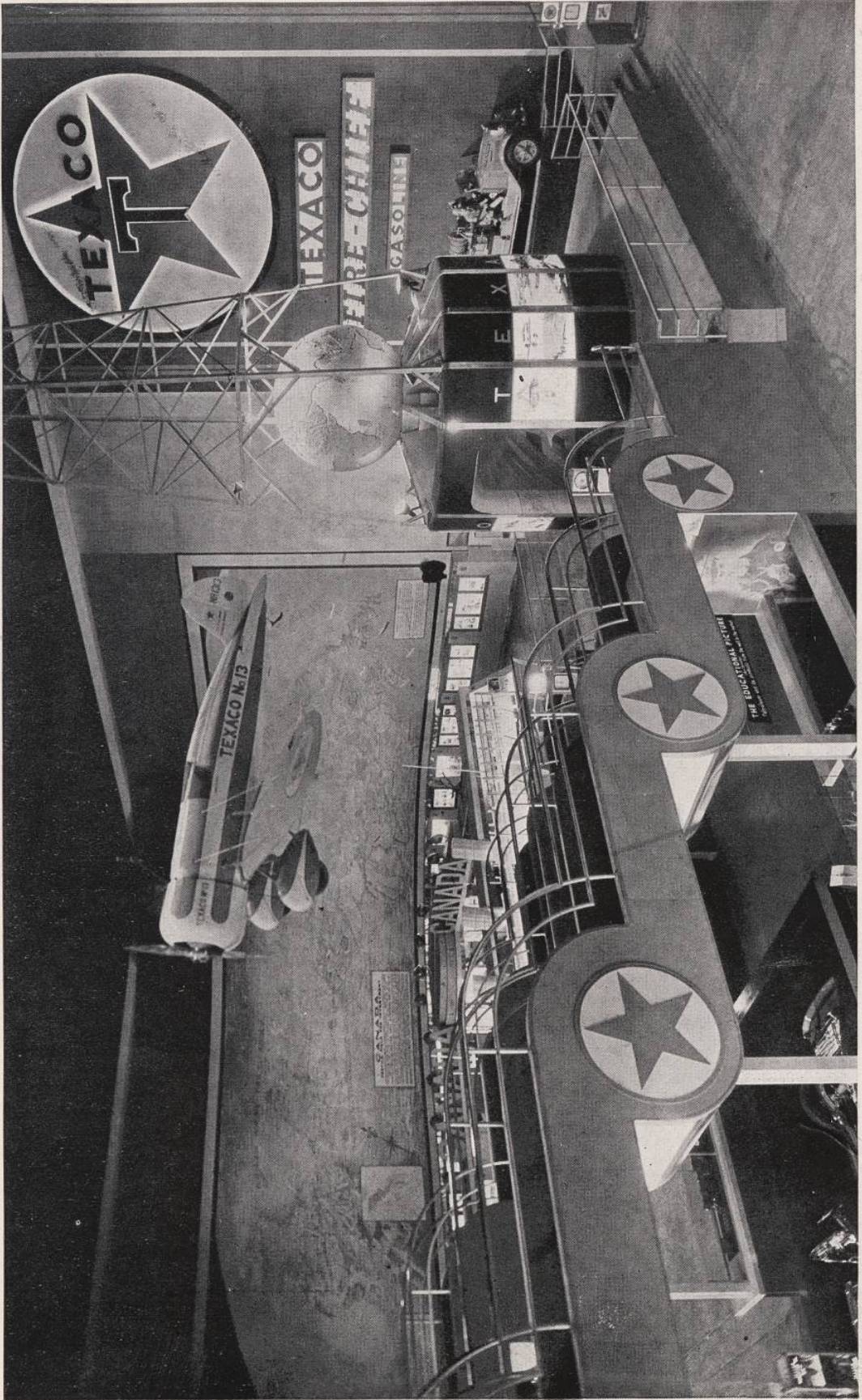
Model Libby-Owens Ford Safety Glass Assembly Line.

Right—  
Baseball-  
Throwing  
Rack.  
Public  
invited  
to  
throw  
at  
Safety  
Glass.

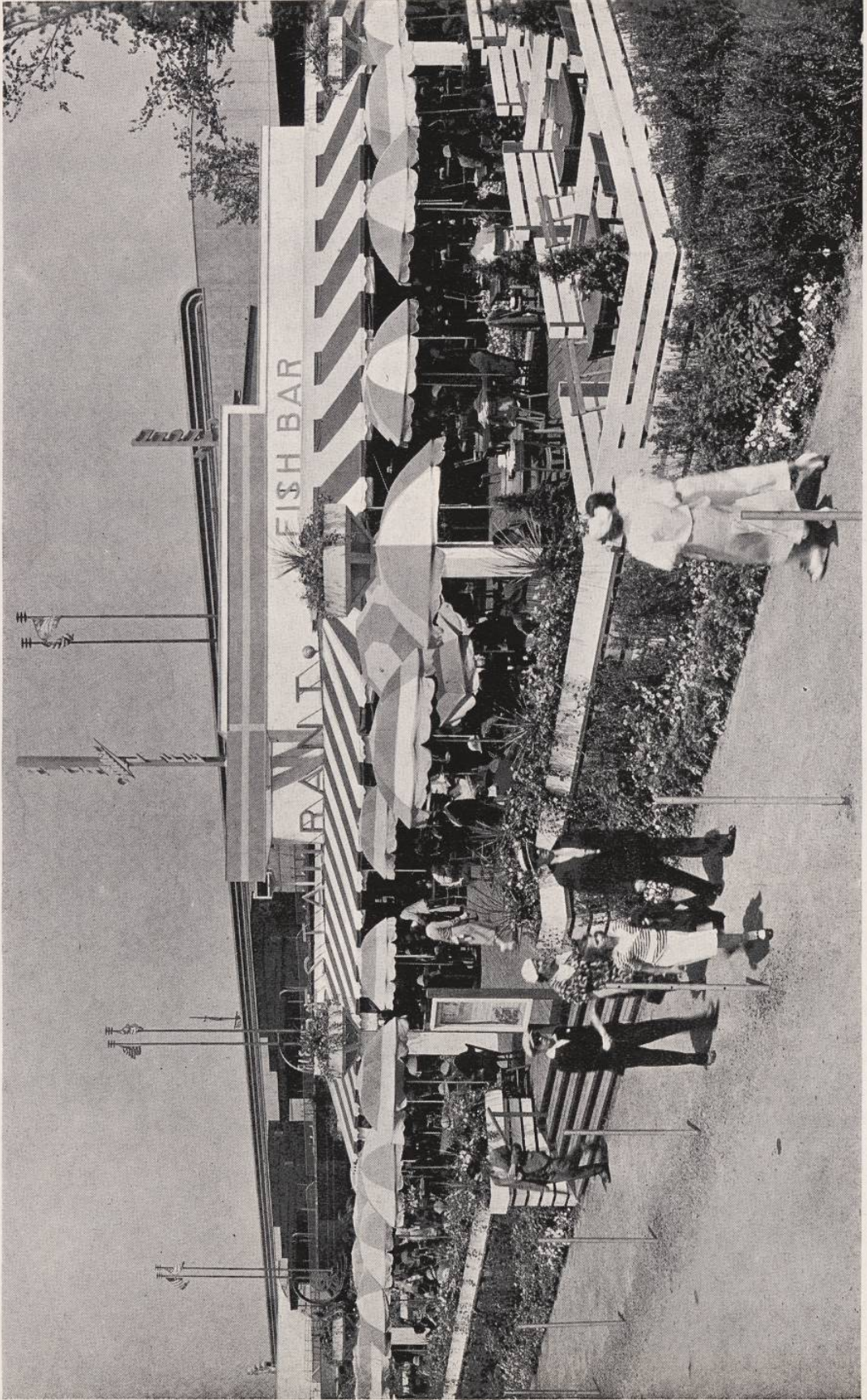




The Chrysler Motors Exhibit at night.



Texaco Oil Exhibit in the Travel and Transport Building.



Miller's High Life Fish Bar on Northerly Island.

over A Century of Progress and the city of Chicago at \$3.00 per passenger. These ships take off from beautiful Lake Michigan.

**Casino De Alex on the Lake**—The red building marked "Schlitz". This is one of the most popular dinner restaurants at the World's Fair. Floor show includes Herb Carlin and his band. Moderate prices.

**Romance of Advertising**—Admission free. A motion picture demonstrating national advertising.

**Air Show**—Admission 25c. U. S. Army and private air exhibits for the attention of those who are air-minded. Outside the building the airplane testing machine will attract your attention.

**Wings of a Century**—A pageant of transportation from olden days of the Pony Express right down to the present day. Admission 40c and 25c. Large number of people, horses and equipment are used to present this show.

**Travel and Transport Building**—This is an immense exhibition group. Of special note is the transportation dome on the main building which is suspended in such a manner that it has become known as the breathing dome, giving the great hall of transportation a circle 206 feet in diameter clear of any obstruction. Beneath the dome the Red Crown of Standard Oil is mounted on a pedestal large enough to contain four picture projection booths showing a stream of motion pictures portraying the development of the oil industry on the walls of the building inside the dome. In this group are railroad locomotives from the oldest to the very newest models. You will find the very latest airplanes. Both United Airlines and American Airways have exhibits in this building. Practically every railroad in the U. S. is represented in the group while on the track just south of the building the Royal Scot, England's greatest train, is exhibited in the outdoor transportation show. The U. S. government and the government of Canada are well represented. Packard automobiles, Du-senberg's, and Safety Glass are on exhibition. Ed Wynn, in full-size effigy, drives a Texaco Fire Truck in the Texas Oil Company exhibit. Admission free. Other foreign exhibitions include the Mexican Presidential train, Brazil, Irish Free State, Denmark, Philippine Islands, Luxemburg, and Palestine Railways.

**Libby Owens Ford Exhibit**—In the Travel & Transport Building. The safety glass exhibit is one of the most interesting on the grounds. Here the public is invited to throw baseballs at safety glass to test its strength. A souvenir pin is presented to all participants. There is also a very fine working model of a safety glass assembly line.

**Texaco Exhibit**—In the Travel & Transport Building shows various phases of fuel application and consumption. Capt. Frank Hawks' record-breaking plane hung from the ceiling. Educational picture. "Oil flow chart" mailed free upon registration at booth. 1,000 Fire Chief hats free every day to children under 10, with parents.

**Nash Motors**—A beautiful glass-enclosed elevator displays all models of Nash automobiles. Adjoining the T. & T. group. Admission free.

**Machinery Demonstration Area**—International Harvester Company demonstrates the very latest in farm and road building machinery on a large plot of ground between the T. & T. Building and the 35th St. entrance. Admission free.

**Poultry Show**—This show includes an international egg-laying contest. Admission is free. Eggs laid by champion hens are for sale within the show.

**Goodyear Field**—The Goodyear blimps, Puritan and Reliance, will take you for a cruise over the Fair Grounds at \$3.00 per person. Six passengers are carried each time.

**Days of '49**—Admission 10c. Typical Gold Rush mining town as they were in 1849 with bars and shows and bad men shooting up the town. As you enter on the right you will find "Dutch" Charley's feed store where you can eat and drink.

**Domestic Animal Show**—Interesting show of large and small domestic animals. Admission 10c. At the north end you will find the live stock; at the south end of the building is the dog show.

**Log Rolling Show**—Admission free. Champion woodsmen were brought in from the forests to entertain you in an exhibition of log rolling.

**Old Mexico**—Restaurant with a big Spanish floor show including Rosalie in her fan dance. Dinner \$1.00 and up. Dine and dance in Old Mexico.

**The Great Beyond**—A heaven and hell show with live devils. Admission 25c.

**Ukrainian Pavilion**—Sponsored by Americans of Ukrainian descent. Exhibits include Ukrainian

works of art, sculpture, paintings, large restaurant where you can dine and dance and in industrial exhibit of Ukrainian products.

**Captive Balloon**—This observation balloon carries passengers at \$1.10 each. The balloon is released and drawn in on a steel cable, permitting a good view of the Fair Grounds.

## 39th STREET—South end of A Century of Progress, a main entrance.

Southern terminal of the Grayhound Bus Lines within the Grounds. Wheel chairs, rikshas, souvenir counters, and news stands are, of course, available throughout the Fair Grounds.

Receiving depot for A Century of Progress.

## 12th STREET ISLANDS — Northerly Island—going south.

**Terrazzo Promenade**—On 12th Street between the Bridge and the Adler Planetarium. Beautiful display of Terrazzo work in terraces under clear running water.

**Adler Planetarium**—Admission 25c. Lectures every hour from 10 A. M. to 10 P. M. There are two planetariums such as this in the world, one in Germany and one here.

### Lagoon Boat Landing.

**German-American Building**—A building given over to the arts, works and entertainment of Germany. In the Rathskeller, meals are 40c. The waiters and waitresses sing German songs. On the second floor is the German-American Reception Club, a dining room and a cafe. On the roof the Berlin Follies are presented nightly and there is dancing. Admission free.

**Solomon's Temple**—Admission 25c. Contains an exact replica of King Solomon's Temple.

**Beach House Restaurant**—Known for good food at reasonable prices.

**Boardwalk, Midway and Beach**—Shows, games, rides and amusements of all sorts. Bathing in Lake Michigan from Jantzen Beach, or in Baby Ruth pool.

**Dairy Building**—Including an interesting industrial exhibition of the dairy industry and a mechanical cow. Admission is free. For your entertainment the Dairy Building presents the color organ which plays with variations of color projected on the wall synchronized with the sound as the player's fingers roam over the keyboard.

**International Harvester Building**—Exhibiting the latest farm equipment and milking machines on mechanical cows that look like the real thing. Full line of motor trucks, thresher, harvester and cotton pickers.

**Food and Agriculture Building**—This building contains complete and detailed exhibits of agricultural products and their conversion into foods. The canning and packing of foods is dioramicly displayed in this building.

**Heinz Food Exhibit**—The H. J. Heinz Company in its exhibit presents an interesting series of eight model and period kitchens: Acadian, early American, Colonial, early New England, American 1869, and 1933 modern. The other four comprise the foreign group, rural English, Spanish, Dutch and French provincial. In the center of the exhibit there is a large fountain of the famous 57, around which revolves the parade of the products. Thousands of Fair visitors are served daily. In the Foods Bldg.

**Miller High Life Fish Bar**. Popular sea food restaurant on the north lagoon. Plate luncheon 50c, dinner \$1.25, a la carte prices reasonable. Specializes in strictly fresh sea foods, steaks, chops. Outdoor terrace overlooks the Florida Tropical Gardens where orange and lemon trees are in full bloom. Operated by Hazel M. Thornd.

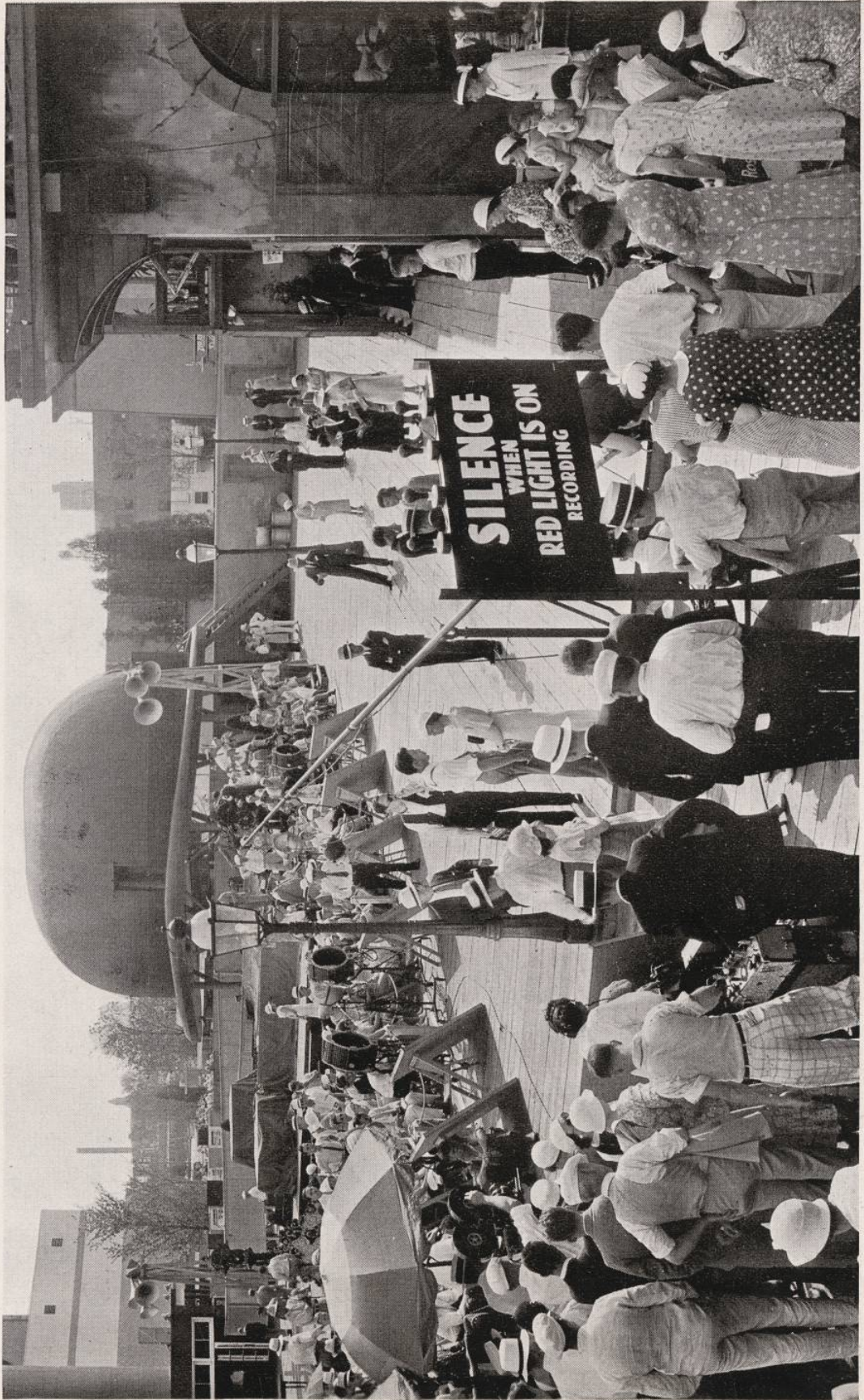
**Florida Sponge Divers**—This little boat with its expert divers will give you a demonstration of their life work which is bringing sponges from the bottom of the ocean. For this demonstration they have planted a large group of sponges on the bottom of the lagoon. Admission 25c.

### Lagoon Boat Landing.

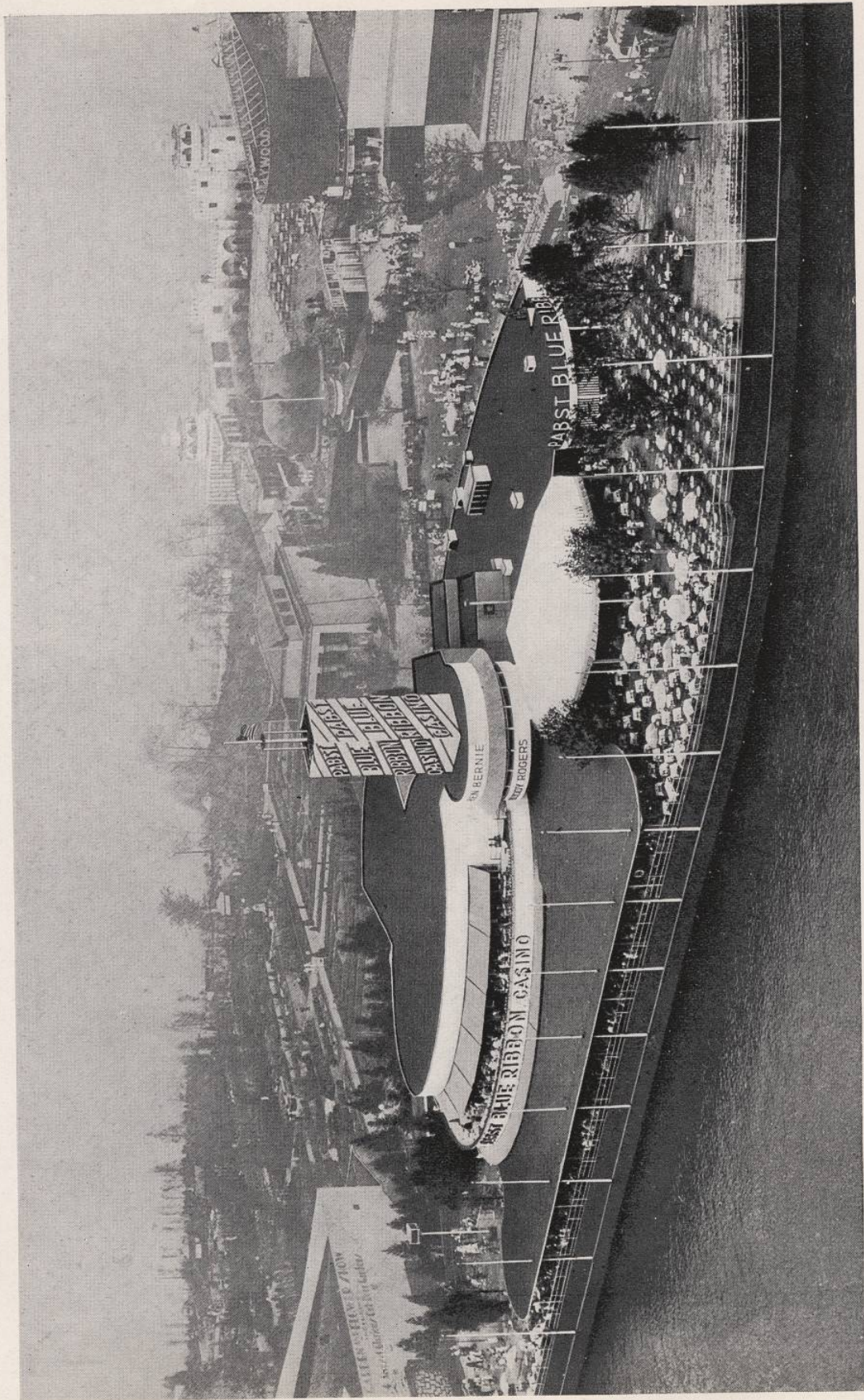
**Federal and States Buildings**—The Court of the Hall of States has a seating capacity of about 25,000. In this Court are presented many free programs. The Federal Building itself with its three pylons representing the three branches of government, executive, legislative, and judicial, contains very interesting and worth-while exhibits from every department of the federal government, including Navy, Commerce, Agriculture, Census Bureau, Coast Guard, the Army, and the Patent office,

(Continued)





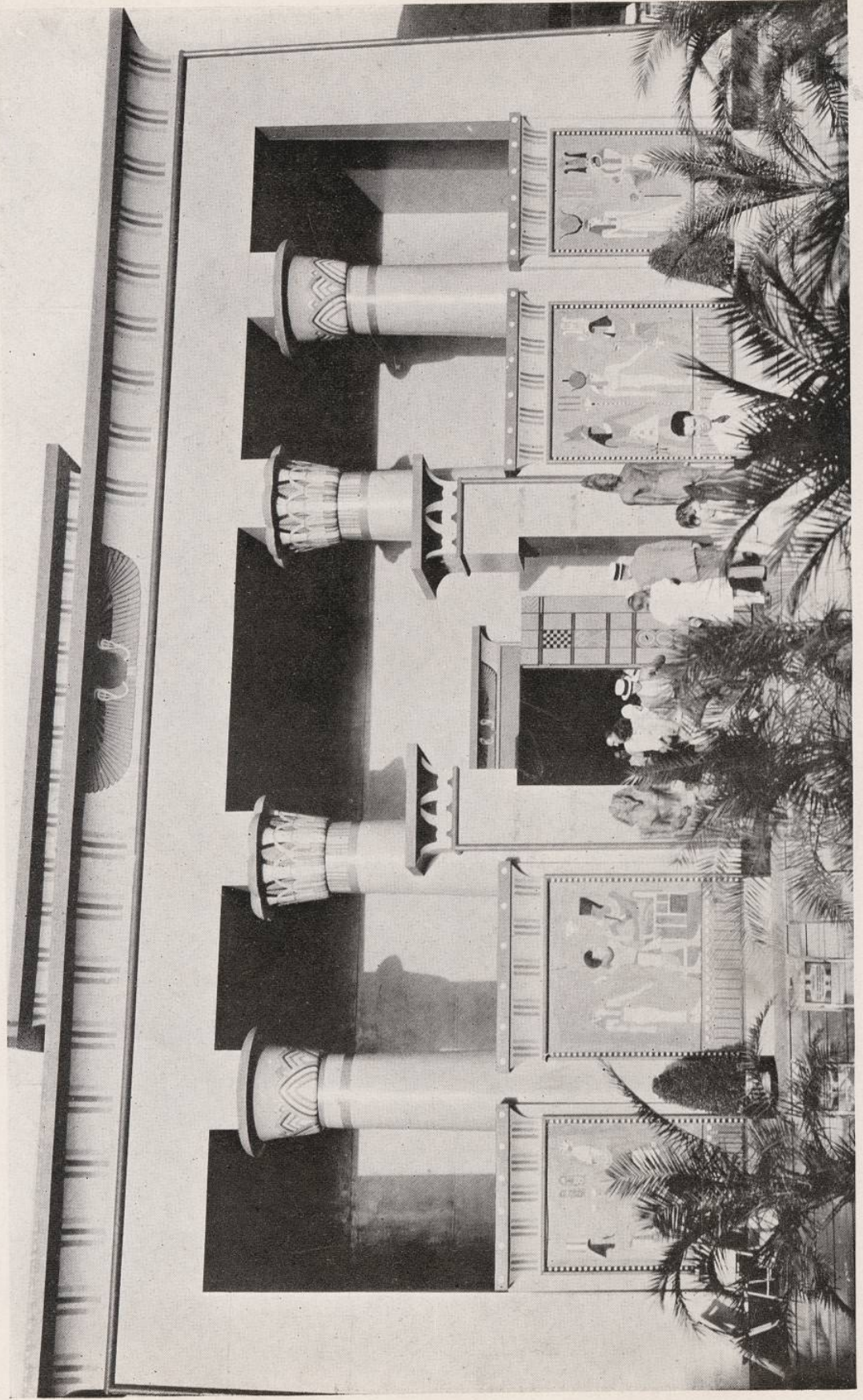
Making Movies in Hollywood.



The Famous "Casino" on the South Lagoon.



Los Angeles County, California, in the Hall of States.



Egyptian Pavilion—A free Egyptian Government Exhibit on Southerly Island.



Various views of four of the Model and Period Kitchens presented by the H. J. Heinz Co. in the Foods Building on Northerly Island.



*Top*—Modern Kitchen.

*Above left* — Dutch Kitchen.

*Above right* — 1869 American Kitchen.

*Left*—French Provencal Kitchen.

### Federal and States Building (Continued)

where original models of patents are on display. In the Court of States various states and territories have individual exhibitions, and several have outdoor displays or gardens. The states represented in this group are Wisconsin, New York, Iowa, Washington, Ohio, North Dakota, South Dakota, Georgia, California, Indiana, Minnesota, Mississippi, West Virginia, Texas, Michigan, Arizona, Illinois, Missouri, Florida, Arkansas, Colorado, Puerto Rico, and Alaska. All of these states have extensive individual exhibits, some of which are very elaborately displayed. Well worth your while to visit them. Admission free.

**Los Angeles County, California, State Exhibit**—There is pictured here the beauty of the mountains and valleys, the silent desert, the sea, the picturesque setting in its entirety which truly makes this "America's Playground". Further dioramas, revolving picture racks, and charts show the industrial development, specifically in agricultural production, oil refining, motion pictures, tire manufacturing, furniture, women's apparel. The dominating part played by Los Angeles Harbor is also shown.

**Puerto Rico**—Vacationists' "Isle of Enchantment" in the Caribbean. A typically beautiful tropical setting exhibiting world famous prize winning snow white sugar, Yauca coffee, grapefruit, pineapples, cigars, needlework, paintings and novelties. Puerto Rico is the oldest U. S. territory.

**Sky Ride**—East terminal of the sky ride is located here on the Island. There is an observation tower and a terminal where you can board the sky ride to cross to the mainland. Admission 25c.

### 16th STREET or SCIENCE BRIDGE.

Between the Islands and the Hall of Science on the mainland. Going south.

**Schlitz Garden Restaurant**—A la carte at reasonable prices. Northerly Island.

**Dominican Government Exhibit**—at the foot of the 16th Street Bridge. Admission free. Outdoor replica of Columbus memorial.

**Hall of Social Science**—Admission free. This large building is devoted exclusively to social science and contains a great many very interesting exhibits.

**Boy Scout Camp**—Just east of Hall of Social Science on the Lake.

**Aquatic Golf**—Driving golf balls into lake where they are recovered by boats. Admission 25c.

**Edison Memorial**—Admission free. A memorial built in front of the Electrical Group in honor of Thomas A. Edison. Around the building is a beautiful garden brought from Edison's home in Orange, New Jersey.

**Radio and Communications Building**—The latest and greatest achievements of the radio industry are demonstrated here. This building is a part of the Electrical Group. Admission free.

**Crane Exhibit**—Few realize the wide spread use of valves and fittings. The Crane animated display in the Electrical Building tells the story in an interesting way and is well worth a visit.

**Electrical Group**—In this group you will find a great many things to interest you. Modern miracles from the research laboratories of the great electrical and radio companies are presented in an entertaining manner. General Electric Company in the House of Magic Theater presents a half-hour program from 10 A. M. to 10 P. M. Hudson-Essex have a radio and television theater. All of these things are free in this group. The Westinghouse Electric dynamos are set under a glass floor. Hundreds of interesting exhibits are arranged as you walk around the Electrical Group. Entering from the east the telephone company presents several special demonstrations that are very entertaining, including scrambled conversation, the acoustics program and others.

**General Electric Exhibit**—The feature of this extensive display is the "House of Magic," a comfortable little theater seating several hundred in which

demonstrations of laboratory research developments are given entertainingly. Another thrilling display is the group of electric kitchens. Other units shown by General Electric are air conditioning, home laundry demonstrations, appliances, lighting of small apparatus and models of large equipment. Altogether a very attractive exhibit.

**Enchanted Island**—This is the children's playground. It is designed to give boys and girls a well-rounded recreation program. Here are the various rides, the children's theater with performances running continuously, the art gallery showing children's handicraft, the Magic Mountain, and the playroom and playground where children may be left with trained attendants for 25 cents. General admission is 10 cents for adults and is free to children.

**Lagoon Boat Landing.**

**Horticultural Building**—Admission 25c. Children free. A large exhibition showing indoors cut flowers, garden settings and scenes, dioramically arranged using real trees and real flowers and real brooks. Outdoors in a very extensive display is an arrangement of different types of formal and informal gardens all of which are very wonderfully designed along the lake shore. Indoors facing the outdoor garden is the Horticultural restaurant serving \$1.00 dinner and a la carte at reasonable prices. Weekly flower shows arranged by various national Associations.

**Pabst Blue Ribbon Casino**—One of the larger restaurants on the Grounds featuring the most popular dance bands including Ben Bernie, Paul Ash, Mrs. Ford Carter's style show, and other entertainment. The restaurant is built on the south end of the south lagoon. Dinner is \$2.00. No cover charge. Reasonable a la carte service.

**The Egyptian Pavilion**—This is an Egyptian government exhibit. Admission is free. The exhibit shows replicas of statues found in King Tut's tomb, a miniature replica of King Tut's throne, furniture inlaid with Mother of Pearl, copies of ancient Egyptian jewelry and some modern Egyptian jewelry. The Egyptian industrial display includes hand-made rugs and carpets, brass trays inlaid with silver and copper, applique tent work, etc. This is the first time the Egyptian government has installed an exhibition anywhere in the United States.

**Hollywood**—Here the romantic, alluring atmosphere of the world's famous movieland is brought to A Century of Progress visitors. Admission price 25c. On the lot are several typical Hollywood sets—one an Algerian scene, another a London street scene, and still another a street scene of New Orleans including the famous Absinthe House. The Brown Derby lunch counter serves meals or sandwiches, and there are numerous bars, an open cafe, and the exclusive Malibu Beach Club. The M-G-M lion, in person roars and paws energetically. Daily demonstrations are given in the art of making motion pictures. There is a floor show presented at the open air cafe, and fine vaudeville in a large theater. Admission to these is free. There is the Hollywood orchestra, many good entertainers, and several featured movie players.

**Thrill House**—A complete crime review. Admission 10c.

### 23rd STREET BOAT LANDING.

East of the Venetian or 23rd Street Bridge. Island Terminal of the Greyhound Bus Line.

**The Bluenose**—The fastest sailing vessel of its class in the North Atlantic. Has won four international cups. The Bluenose is open to the public. Admission is 25c.

**23rd Street Dock**—This is the pier used by the Columbian Transportation Company and by speed boats from the north and south.

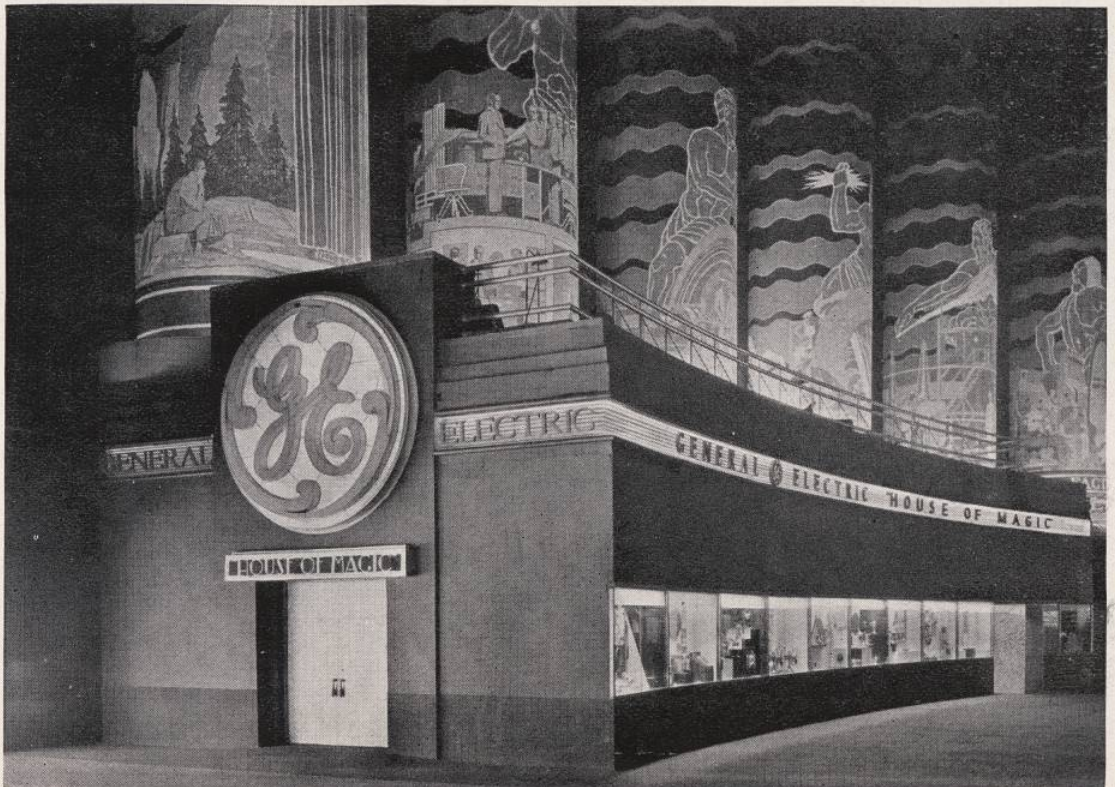
**23rd STREET**—The south end of the Island.

Read the newspapers of Chicago for special events and daily programs. Prices and Attractions are subject to change.

FRED KLEIN CO., Printers,  
732 W. Van Buren Street. Telephone Monroe 6363.  
Not Published by A Century of Progress.  
Copyright 1933.



General Electric Exhibit.



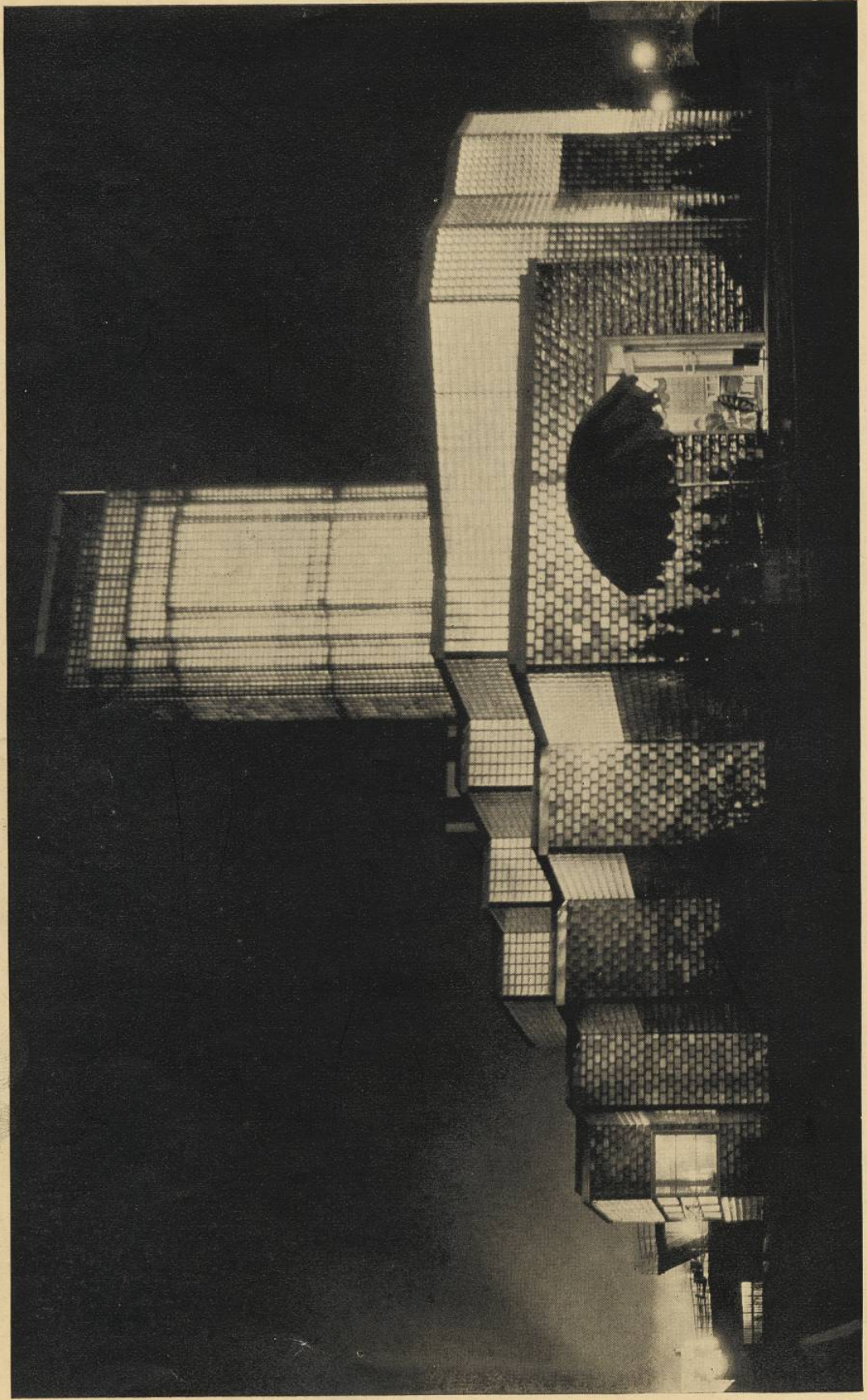
House of Magic.







"Old Mexico," the gay spot at the south end of the Fair Grounds.



Owens-Illinois Glass Block Building at night.

# A CENTURY OF PROGRESS

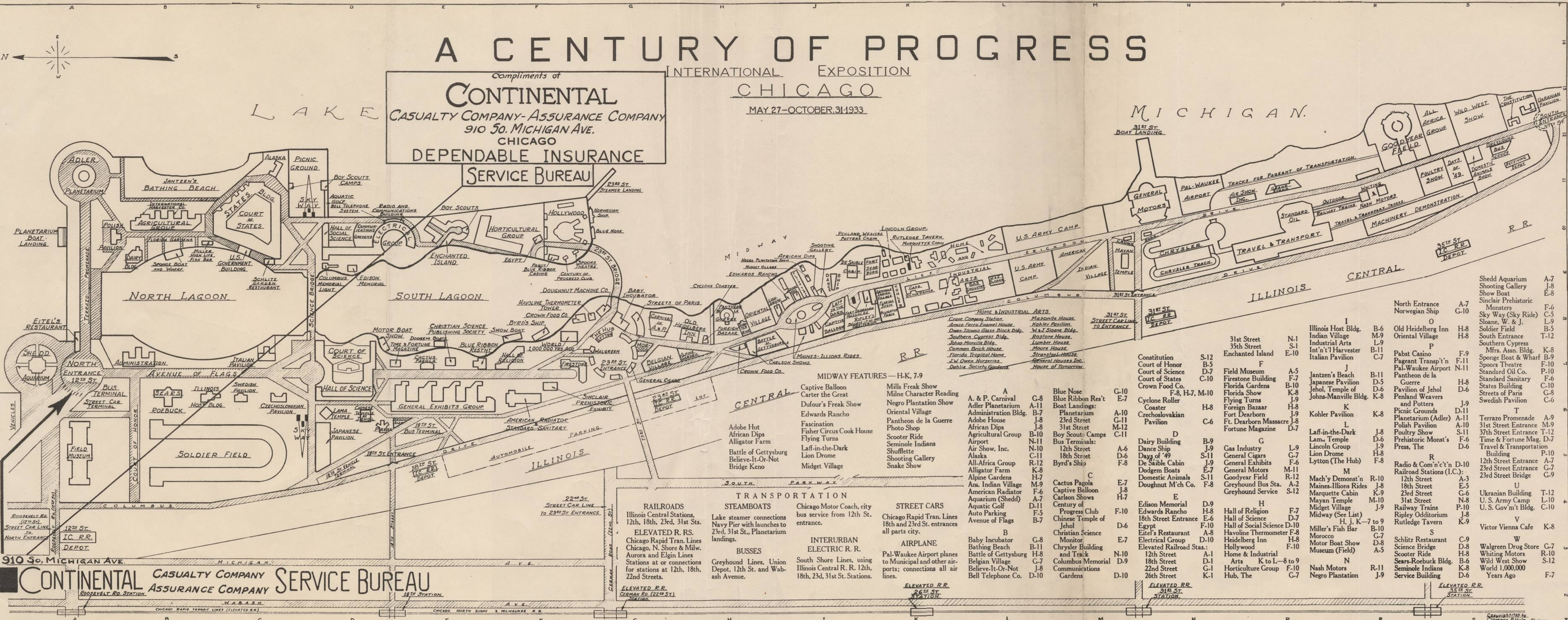
INTERNATIONAL EXPOSITION

CHICAGO

MAY 27-OCTOBER 31 1933

Compliments of  
**CONTINENTAL**  
 CASUALTY COMPANY-ASSURANCE COMPANY  
 910 So. MICHIGAN AVE.  
 CHICAGO  
**DEPENDABLE INSURANCE**

**SERVICE BUREAU**



910 So. MICHIGAN AVE.  
**CONTINENTAL**  
 CASUALTY COMPANY ASSURANCE COMPANY  
**SERVICE BUREAU**

**MIDWAY FEATURES—H-K, 7-9**

- Captive Balloon
- Carter the Great
- Dufour's Freak Show
- Edwards Rancho
- Fascination
- Fisher Circus Cook House
- Flying Turns
- Laff-in-the-Dark
- Seminole Indians
- Shufflette
- Shooting Gallery
- Snake Show
- Mills Freak Show
- Milne Character Reading
- Negro Plantation Show
- Oriental Village
- Pantheon de la Guerre
- Photo Shop
- Scoter Ride
- Seminole Indians
- Shufflette
- Shooting Gallery
- Snake Show

**TRANSPORTATION**

- RAILROADS**  
 Illinois Central Stations, 12th, 18th, 23rd, 31st Sts.  
 ELEVATED R. RS.  
 Chicago Rapid Tran. Lines Chicago, N. Shore & Milw. Aurora and Elgin Lines  
 Stations at or connections for stations at 12th, 18th, 22nd Streets.
- STEAMBOATS**  
 Lake steamer connections Navy Pier with launches to 23rd, 31st St., Planetarium landings.
- BUSSES**  
 Greyhound Lines, Union Depot, 12th St. and Wabash Avenue.
- INTERURBAN ELECTRIC R. R.**  
 South Shore Lines, using Illinois Central R. R. 12th, 18th, 23d, 31st St. Stations.
- STREET CARS**  
 Chicago Rapid Tran. Lines 18th and 23rd St. entrances all parts city.
- AIRPLANE**  
 Pal-Waukee Airport planes to Municipal and other airports; connections all air lines.

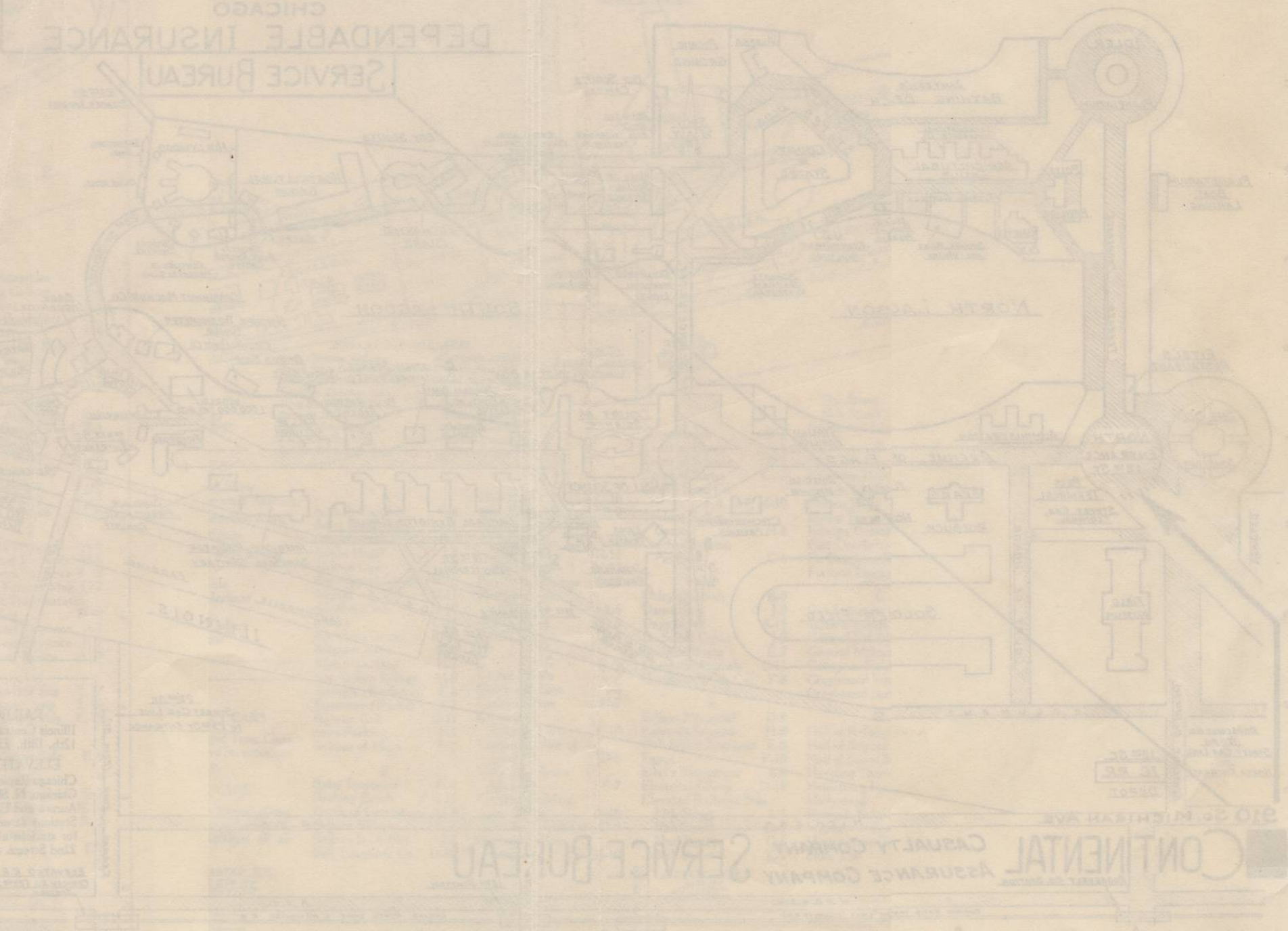
- A. & P. Carnival
- Adler Planetarium
- Administration Bldg.
- Adobe House
- African Dips
- Agricultural Group
- Airport
- Air Show, Inc.
- Alaska
- All-Africa Group
- Alligator Farm
- Alpine Gardens
- Am. Indian Village
- American Radiator
- Aquarium (Shedd)
- Aquatic Golf
- Auto Parking
- Avenue of Flags
- Baby Incubator
- Bathing Beach
- Battle of Gettysburg
- Belgian Village
- Believe-It-Or-Not
- Bell Telephone Co.
- Blue Nose
- Blue Ribbon Res't
- Boat Landings:
- Planetarium
- 23rd Street
- 31st Street
- Boy Scouts' Camps
- Bus Terminals:
- 12th Street
- 18th Street
- 18th Street
- Byrd's Ship
- Cactus Pagola
- Captive Balloon
- Carlson Shows
- Century of Progress Club
- Chinese Temple of Jehol
- Egypt
- Eitel's Restaurant
- Electricity Group
- Elevated Railroad Stas.:
- 12th Street
- 18th Street
- 22nd Street
- 26th Street
- Edison Memorial
- Edwards Rancho
- 18th Street Entrance
- Egypt
- Eitel's Restaurant
- Havoline Thermometer
- Heidelberg Inn
- Hollywood
- Home & Industrial Arts
- Arts
- Hub, The
- Hall of Science
- Hall of Social Science
- Havoline Thermometer
- Heidelberg Inn
- Hollywood
- Home & Industrial Arts
- Arts
- Hub, The
- Hall of Religion
- Hall of Science
- Hall of Social Science
- Havoline Thermometer
- Heidelberg Inn
- Hollywood
- Home & Industrial Arts
- Arts
- Hub, The
- Hall of Science
- Hall of Social Science
- Havoline Thermometer
- Heidelberg Inn
- Hollywood
- Home & Industrial Arts
- Arts
- Hub, The
- Hall of Science
- Hall of Social Science
- Havoline Thermometer
- Heidelberg Inn
- Hollywood
- Home & Industrial Arts
- Arts
- Hub, The

- Constitution
- Court of Honor
- Court of Science
- Court of States
- Crown Food Co.
- Cyclone Roller Coaster
- Czechoslovakian Pavilion
- Dairy Building
- Dance Ship
- Days of '49
- De Saible Cabin
- Dodgem Boats
- Domestic Animals
- Doughnut M'ch Co.
- Edison Memorial
- Edwards Rancho
- 18th Street Entrance
- Egypt
- Eitel's Restaurant
- Electricity Group
- Elevated Railroad Stas.:
- 12th Street
- 18th Street
- 22nd Street
- 26th Street
- Enchanted Island
- Field Museum
- Firestone Building
- Florida Gardens
- Florida Show
- Flying Turns
- Foreign Bazaar
- Fort Dearborn
- Ft. Dearborn Massacre
- Fortune Magazine
- Gas Industry
- General Cigars
- General Exhibits
- General Motors
- Goodyear Field
- Greyhound Bus Sta.
- Greyhound Service
- Hall of Religion
- Hall of Science
- Hall of Social Science
- Havoline Thermometer
- Heidelberg Inn
- Hollywood
- Home & Industrial Arts
- Arts
- Hub, The
- Hall of Science
- Hall of Social Science
- Havoline Thermometer
- Heidelberg Inn
- Hollywood
- Home & Industrial Arts
- Arts
- Hub, The
- Hall of Science
- Hall of Social Science
- Havoline Thermometer
- Heidelberg Inn
- Hollywood
- Home & Industrial Arts
- Arts
- Hub, The

- Illinois Host Bldg.
- Indian Village
- Industrial Arts
- Int'n'l Harvester Italian Pavilion
- Jantzen's Beach
- Japanese Pavilion
- Jehol, Temple of
- Johns-Manville Bldg.
- Kohler Pavilion
- Laff-in-the-Dark
- Lama, Temple
- Lincoln Group
- Lion Drome
- Lytton (The Hub)
- Mach'y Demonst'n
- Maines-Illions Rides
- Marquette Cabin
- Mayan Temple
- Midjet Village
- Midway (See List)
- Miller's Fish Bar
- Morocco
- Motor Boat Show
- Museum (Field)
- Nash Motors
- Negro Plantation
- North Entrance
- Norwegian Ship
- Old Heidelberg Inn
- Oriental Village
- Pabst Casino
- Pageant Transp'n
- Pal-Waukee Airport
- Pantheon de la Guerre
- Pavilion of Jehol
- Penland Weavers and Potters
- Picnic Grounds
- Planetarium (Adler)
- Polish Pavilion
- Poultry Show
- Prehistoric Monst's
- Press, The
- Radio & Com'n'c'n
- Railroad Stations (I.C.):
- 12th Street
- 18th Street
- 23rd Street
- 31st Street
- Railway Trains
- Ripley Odditorium
- Rutledge Tavern
- Schlitz Restaurant
- Science Bridge
- Scoter Ride
- Sears-Roebuck Bldg.
- Seminole Indians
- Service Building
- Shedd Aquarium
- Shooting Gallery
- Show Boat
- Sinclair Prehistoric
- Monsters
- Sky Way (Sky Ride)
- Sloane, W. & J.
- Soldier Field
- South Entrance
- Southern Cypress
- Mfrs. Assn. Bldg.
- Sponge Boat & Wharf
- Spools Theatre
- Standard Oil Co.
- Standard Sanitary
- States Building
- Streets of Paris
- Swedish Pavilion
- Terrazo Promenade
- 31st Street Entrance
- 37th Street Entrance
- Time & Fortune Mag.
- Travel & Transportation Building
- 12th Street Entrance
- 23rd Street Entrance
- 23rd Street Bridge
- Ukrainian Building
- U. S. Army Camp
- U. S. Gov't Bldg.
- Victor Vienna Cafe
- Walgreen Drug Store
- Whiting Motors
- Wild West Show
- World 1,000,000 Years Ago

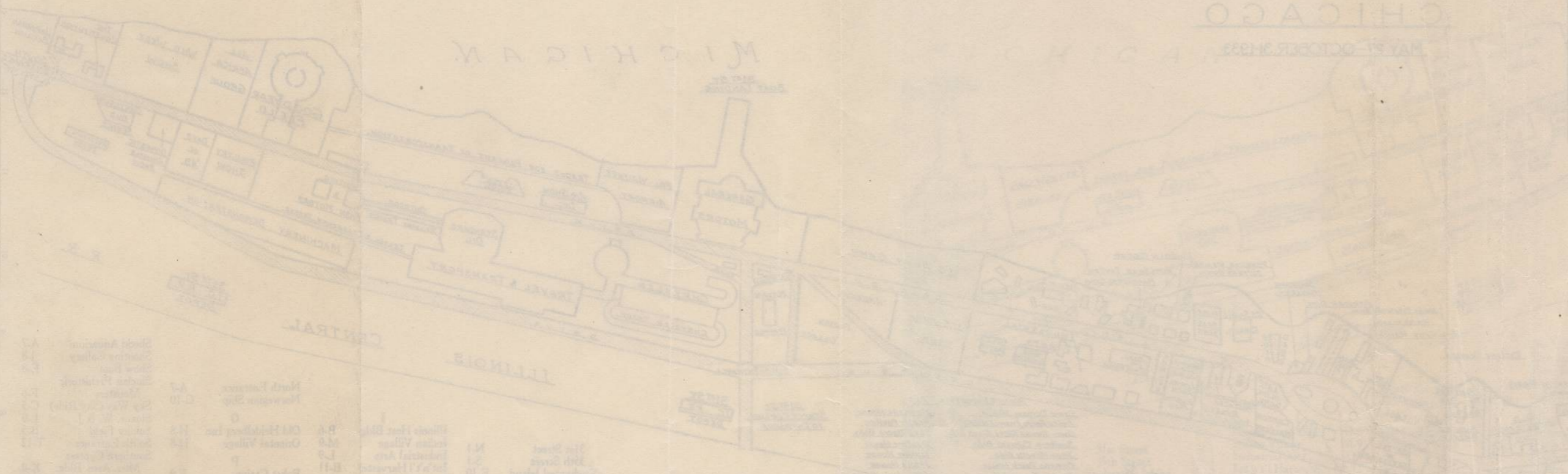


CONTINENTAL  
 CASUALTY COMPANY - ASSURANCE COMPANY  
 310 So. Michigan Ave.  
 CHICAGO  
 DEPENDABLE INSURANCE  
 SERVICE BUREAU



SEE A COENTURY OF PROGRESS

INTERNATIONAL EXPOSITION  
 CHICAGO  
 MAY 27 - OCTOBER 31, 1933



Room No.	Room Name	Room No.	Room Name	Room No.	Room Name
1	Reception	101	Executive Office	201	Board Room
2	Waiting Room	102	Office	202	Office
3	Office	103	Office	203	Office
4	Office	104	Office	204	Office
5	Office	105	Office	205	Office
6	Office	106	Office	206	Office
7	Office	107	Office	207	Office
8	Office	108	Office	208	Office
9	Office	109	Office	209	Office
10	Office	110	Office	210	Office
11	Office	111	Office	211	Office
12	Office	112	Office	212	Office
13	Office	113	Office	213	Office
14	Office	114	Office	214	Office
15	Office	115	Office	215	Office
16	Office	116	Office	216	Office
17	Office	117	Office	217	Office
18	Office	118	Office	218	Office
19	Office	119	Office	219	Office
20	Office	120	Office	220	Office
21	Office	121	Office	221	Office
22	Office	122	Office	222	Office
23	Office	123	Office	223	Office
24	Office	124	Office	224	Office
25	Office	125	Office	225	Office
26	Office	126	Office	226	Office
27	Office	127	Office	227	Office
28	Office	128	Office	228	Office
29	Office	129	Office	229	Office
30	Office	130	Office	230	Office
31	Office	131	Office	231	Office
32	Office	132	Office	232	Office
33	Office	133	Office	233	Office
34	Office	134	Office	234	Office
35	Office	135	Office	235	Office
36	Office	136	Office	236	Office
37	Office	137	Office	237	Office
38	Office	138	Office	238	Office
39	Office	139	Office	239	Office
40	Office	140	Office	240	Office
41	Office	141	Office	241	Office
42	Office	142	Office	242	Office
43	Office	143	Office	243	Office
44	Office	144	Office	244	Office
45	Office	145	Office	245	Office
46	Office	146	Office	246	Office
47	Office	147	Office	247	Office
48	Office	148	Office	248	Office
49	Office	149	Office	249	Office
50	Office	150	Office	250	Office