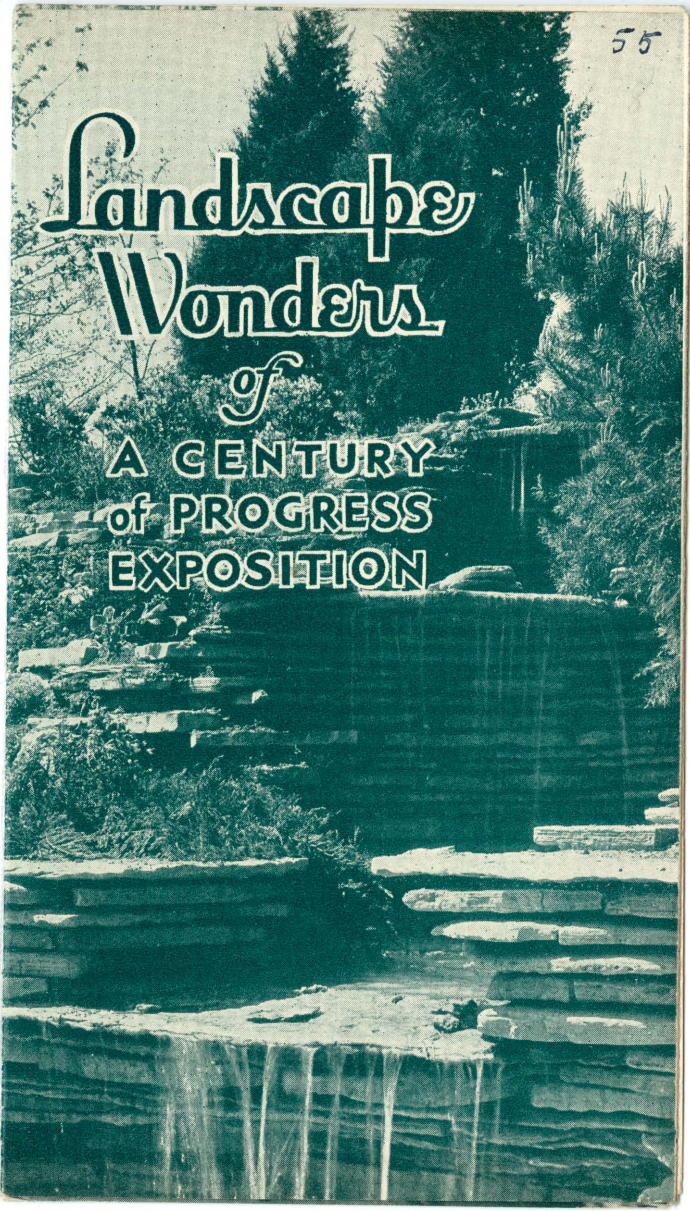


Landscapes Wonders

of

A CENTURY
of PROGRESS
EXPOSITION



AMONG those wonders of A Century of Progress Exposition which will be longest remembered by the thoughtful minded is the near miracle of its almost over-night landscaping. Huge piles of rubbish . . . great fields of clay . . . and then, before the very eyes of the amazed onlookers, great trees, forty to fifty-five feet in height and weighing up to twenty tons, swung deftly into place . . . shrubbery appearing as if by magic . . . fresh, sparkling green lawns circling the trees, hugging the hedges, all as unified, as complete and satisfying as though Father Time himself had worked at it for scores of years on an age-old estate.

But all this was not the result of guesswork. It wasn't just someone's good luck! A Century of Progress Company realized the magnitude of the task confronting the landscaper here, who must work miracles,

not only by doing his work in record time, but in doing it so perfectly that *not a single tree should be lost.*

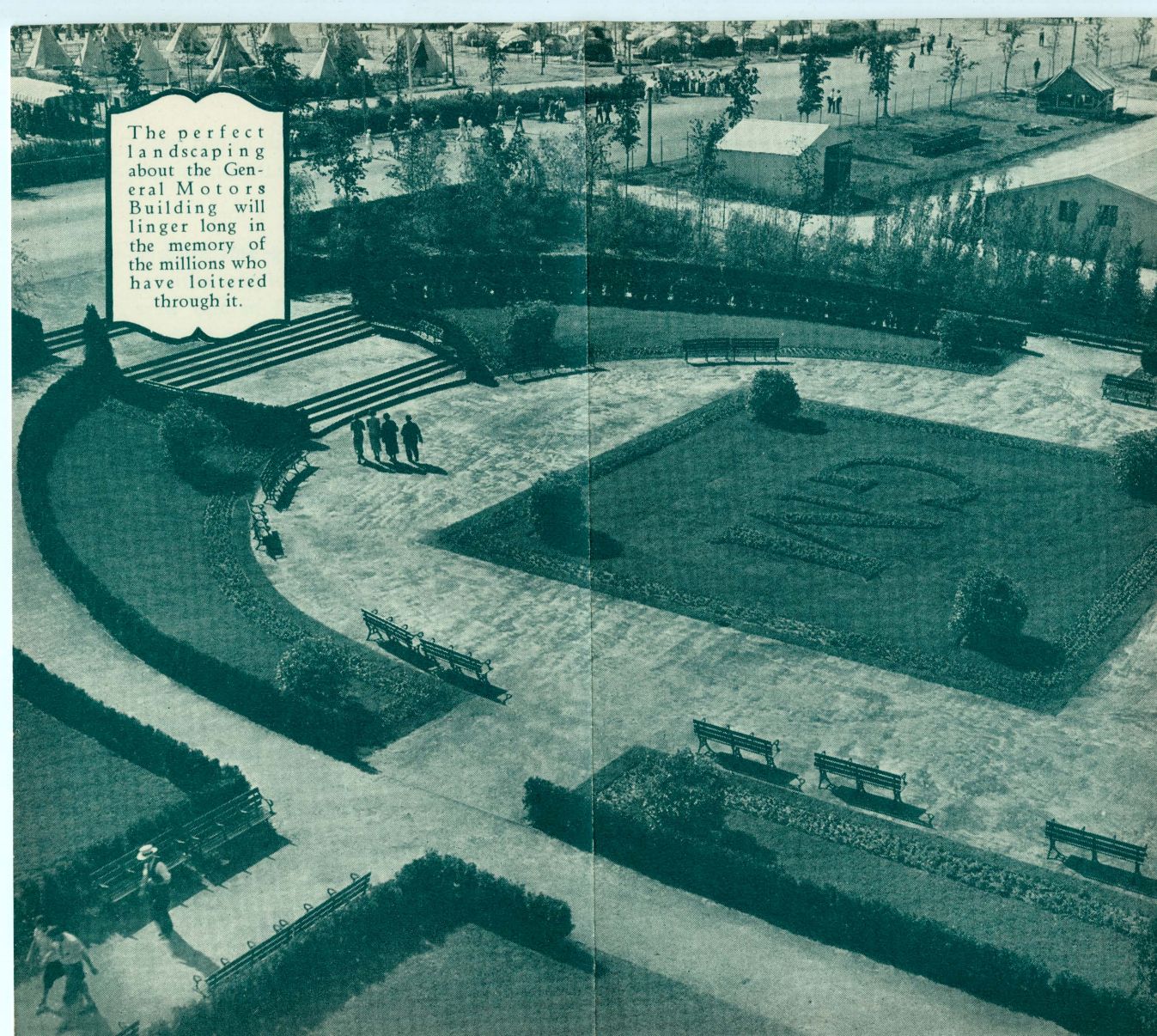
So only those landscaping and nursery concerns with a background of past achievements on a grand scale must be and were selected . . . outstandingly among them Clauss Brothers, landscaping engineers with an enviable reputation on both sides of the Atlantic.

Trees are individuals and must be treated as such. Some will thrive in shade . . . others must have sunlight. The same is true of shrubbery and grasses, and mistakes are expensive. Better eliminate all chance of them by placing your landscaping in the hands of Clauss Brothers. In the meantime, send for Clauss Brothers' interesting book, "Paradises from Rubbish Heaps" in which, among other things, you will see the proper uses of Tufa Rock, Wonder Rock, Moss Covered Sponge Rock, etc.

CLAUSS BROTHERS

1837 N. HARLEM AVENUE
CHICAGO

The perfect landscaping about the General Motors Building will linger long in the memory of the millions who have loitered through it.



THE ALPINE GARDENS
 Containing almost every element of a temperate zone landscape, the Alpine Gardens in the Century of Progress is a vision of loveliness. A few days before the opening of the fair a desolate dump-heap faced Old Heidelberg and abutted the Belgian Village. But opening day dawned on a mountain spring, a meandering brook, rocky hillocks covered with countless perennials, junipers, cedars, pines, shrouded hemlocks, airy larches, lone spruces, and feathery birches, musical waterfalls, tumbling from one time-stained rocky ledge to another, resting at last in a stone-bound pool shadowed by a weeping willow, the whole just another example of CLAUSS BROS.' landscaping.



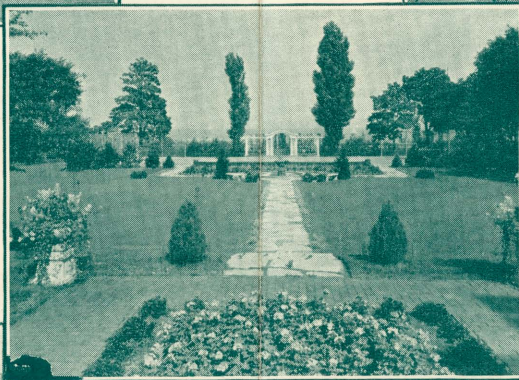
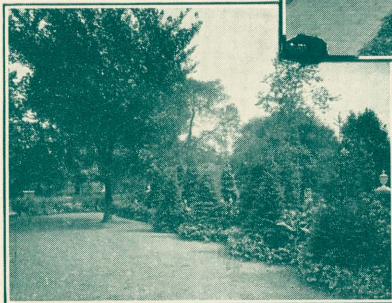
The Firestone building (Burnham Bros., Inc., Archts.), beautified by landscaping by Clauss Brothers, is one of the gems of the Century of Progress.



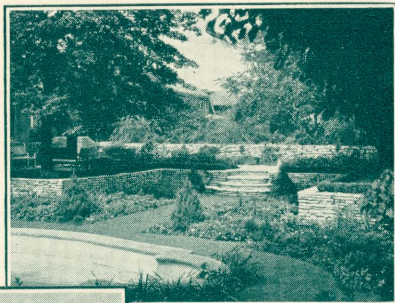


One of the most beautiful in an exclusive community of beautiful estates . . . Lake Forest, Illinois. (Zimmerman, Saxe & MacBride, Archts.)

A most effective use of coniferous and broad-leaved trees about a town house in Oak Park, Illinois.

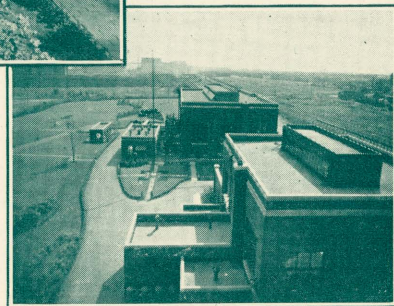


This formal garden on an estate in Evanston, Illinois, is one of the show spots of the famous North Shore.



Glimpse of a garden in Oak Park, Illinois. A striking example of the proper use of the dry wall in formal landscaping.

Public Utilities are increasingly improving the appearance of the communities they serve by landscaping their grounds. This is the Calumet Distribution Station of the Peoples Gas Light & Coke Company.



For interesting views showing progressive development of well-known landscaping projects from start to finish, write for that interesting book, "Paradises from Rubbish Heaps," which will be mailed to you with the compliments of Claus Brothers, landscaping engineers.

The Belgian Village (Burnham Bros., Inc., Archts.), seen rising like a wraith of the middle ages over the trees of the Alpine Gardens, is a picture not soon forgotten.

