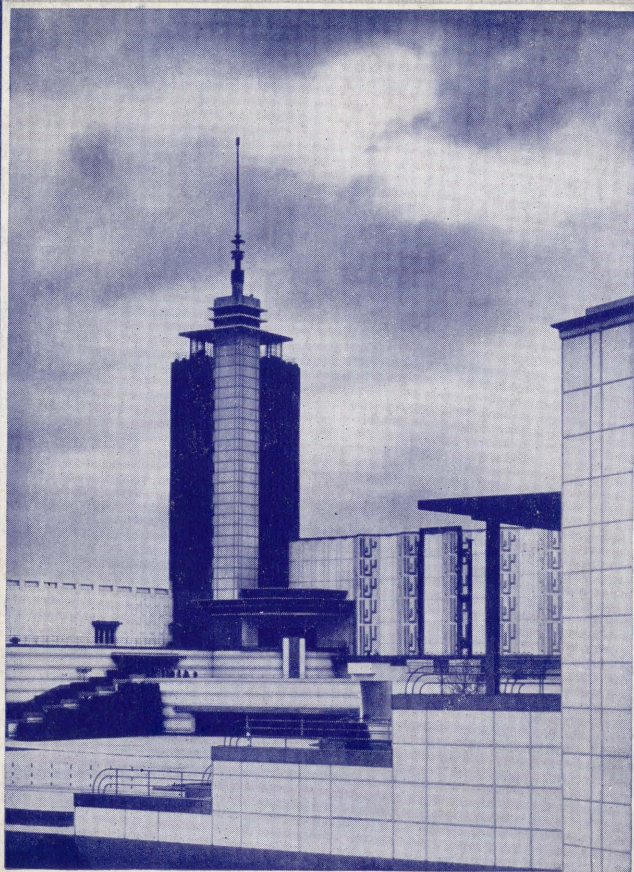


A CENTURY OF PROGRESS INTERNATIONAL EXHIBIT

12



1933

---

THE INTERNATIONAL  
SALON OF PHOTOGRAPHY  
IN THE GRAPHIC ARTS BUILDING

---

CHICAGO CAMERA CLUB

Those desiring additional copies of this catalogue may obtain them from the Chicago Camera Club, 137 N. Wabash Ave., Chicago, at 35c per copy, postpaid.

INVENTORS OF PHOTOGRAPHY



Louis J. M. Daguerre  
1787 - 1851



Thomas Wedgwood  
1771 - 1802



Joseph N. Niepce  
1765 - 1833



Henry Fox Talbot  
1800 - 1877

# The CENTURY OF PROGRESS INTERNATIONAL PHOTOGRAPHIC SALON

## « « « FOREWORD » » »

IT IS fitting that 'A Century of Progress Exposition' should house a Salon of pictures produced by photography—the Art-Science that has been so definitely coincident in development with the past Century.

It was just a hundred years ago that the first pictures made by photographic means were produced. During the period from Daguerre to Eastman, through ten decades of progressive experiments, modern photography has been evolved. It has now reached a state of perfection that is world wide in its utility and applications and leaves further progress more a matter of conjecture than deliberate aim.

In the early days of photography, it was referred to as the 'Cinderella of the Arts,' the despised younger sister of painting, engraving and other more mature methods of graphic expression. Today all that is changed. 'Cinderella' is no longer despised. She has been transformed by the Fairy Wand of modern understanding and takes her rightful place in the Temple of the Arts—the favorite of millions of picture makers and the inspiration of artists in other media.

The progress of photography is a romance that bears favorable comparison with other remarkable achievements of the hundred years that are just completed.

From the difficult and lengthy mechanical and chemical performance with the camera of a previous generation, the evolution of photography has provided the amateur and professional photographer of today with an instrument of precision that will record, in a fraction of a second, with material of marvelous speed and quality, the swift action of the most rapidly moving objects. Modern photography can present to our gaze the subtle beauties of a landscape as easily as it renders an accurate presentation of any article or subject for commercial purposes or the atmospheric effect of a passing storm. It can enlarge to the scale of our vision the hidden marvels of microscopic life. It brings within our range the immeasurably distant stars. It records faithfully, for our future enjoyment, the accidents and incidents of holiday adventures. It introduces us to the wonders of far-away lands and peoples. It is responsible for the reproductions in our illustrated books, magazines and papers. It makes accurate record of historic events, persons and objects that might otherwise pass into the limbo of the forgotten. It assists the architect and the engineer, aids the progress of scientific investigation and informs the natural history student. It presents in movement the passing show of mankind and entertains millions in the form of the cinematograph. But above and beyond these achievements and many others, it teaches its devotee to see and to appreciate the beauties of Nature through the making of pictures of her changing moods and her infinite grandeur. It is in this respect, if in no other, that the progress of photography to its present state of technical perfection and ease of application is a thing for which this generation should be thankful.

Those who have been responsible for its development by unceasing research in the laboratory and the workshop have placed in the hands of the novice and the most advanced worker with artistic ideals a medium of expression that is unique in its simplicity of treatment and accuracy of presentation, qualities that permit full range to the pictorialist unhampered by technical drawbacks.

In the collection of pictures shown in the Salon of Photography at A Century of Progress Exposition, over seven hundred fine examples of modern Pictorial Photography and some notable specimens of Portrait, Commercial and Scientific work with the camera are exhibited.

They have been selected from over 5,000 entries, brought together from all parts of the world by the Chicago Camera Club, and constitute a record in exhibitions of this character.

In addition to the modern work on view, a selection of historical photographs illustrative of the beginning of the Art are shown.

The visitor will realize that, in this Salon of Pictorial Photography, some of the latest and best results of A CENTURY OF PROGRESS WITH THE CAMERA are to be seen.

F. J. MORTIMER, Hon. F. R. P. S.

Editor of "The Amateur Photographer" and "Photograms of the Year"  
British member of the Jury of Selection

# THE CHICAGO CAMERA CLUB

## OFFICERS

Dr. George C. Poundstone . . . . . President  
Dr. Maximilian Kern . . . . . Vice-President  
E. DeWitt Wines . . . . . Secretary  
W. J. Becker . . . . . Treasurer



## SALON COMMITTEE

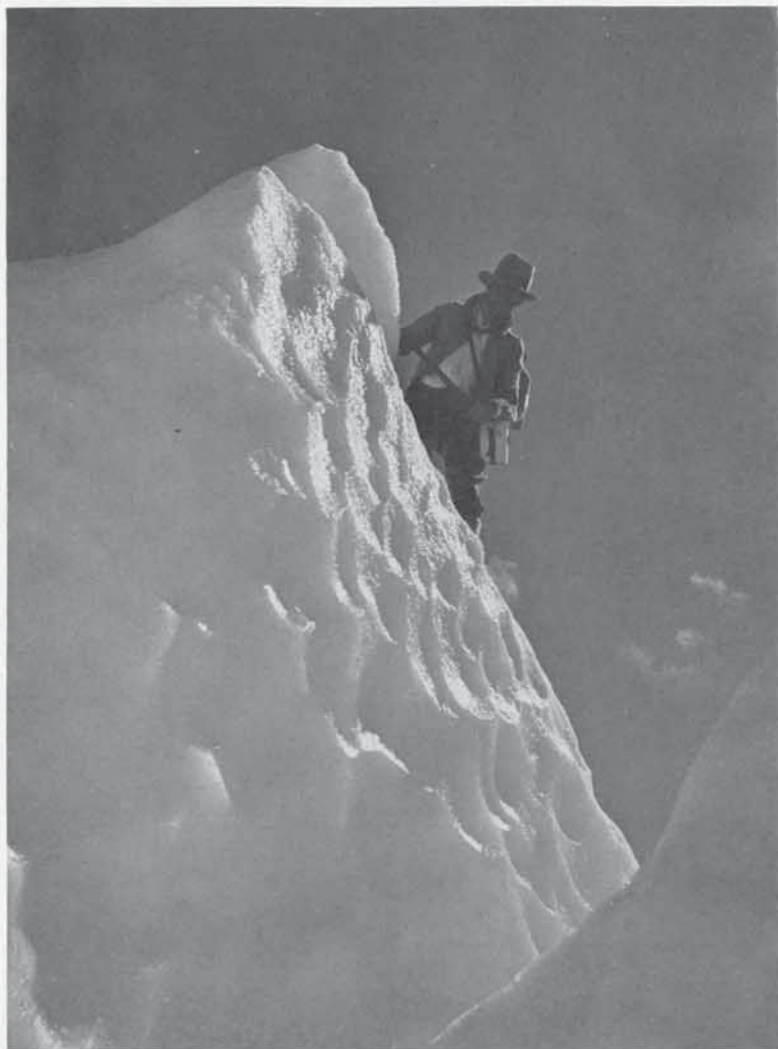
George Henry High, Chairman  
W. C. West, Secretary . . . . . F. M. Tuckerman, Treasurer  
John Lavecchia . . . . . Joseph Simons  
Elmer E. Zuegel . . . . . C. W. Mogg  
Alfons Weber, F.R.P.S.

## JURY OF SELECTION

Pirie MacDonald, Hon. F.R.P.S., Chairman  
F. J. Mortimer, Hon. F.R.P.S. . . . . Frank R. Fraprie, F.R.P.S.  
Charles Aylett, F.R.P.S. . . . . Dr. E. P. Wightman, F.R.P.S.  
James M. Caufield

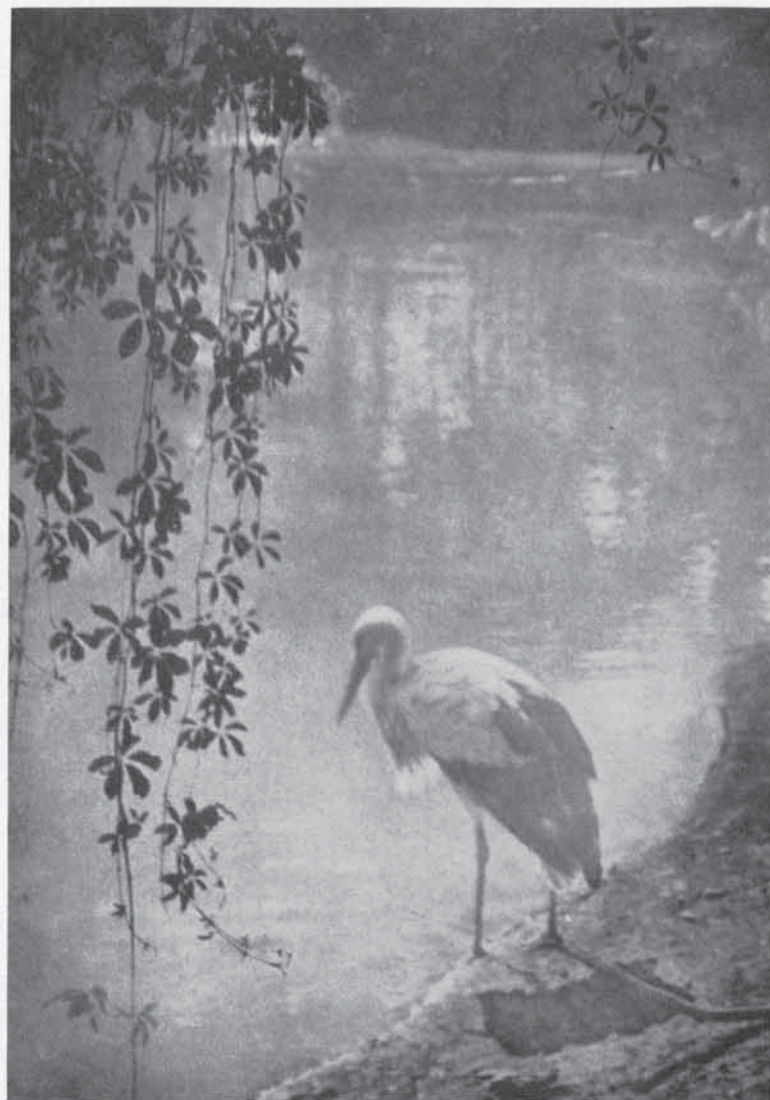
Each member of the jury was invited  
to exhibit four of his own prints.

Copyright 1933  
by  
Chicago Camera Club



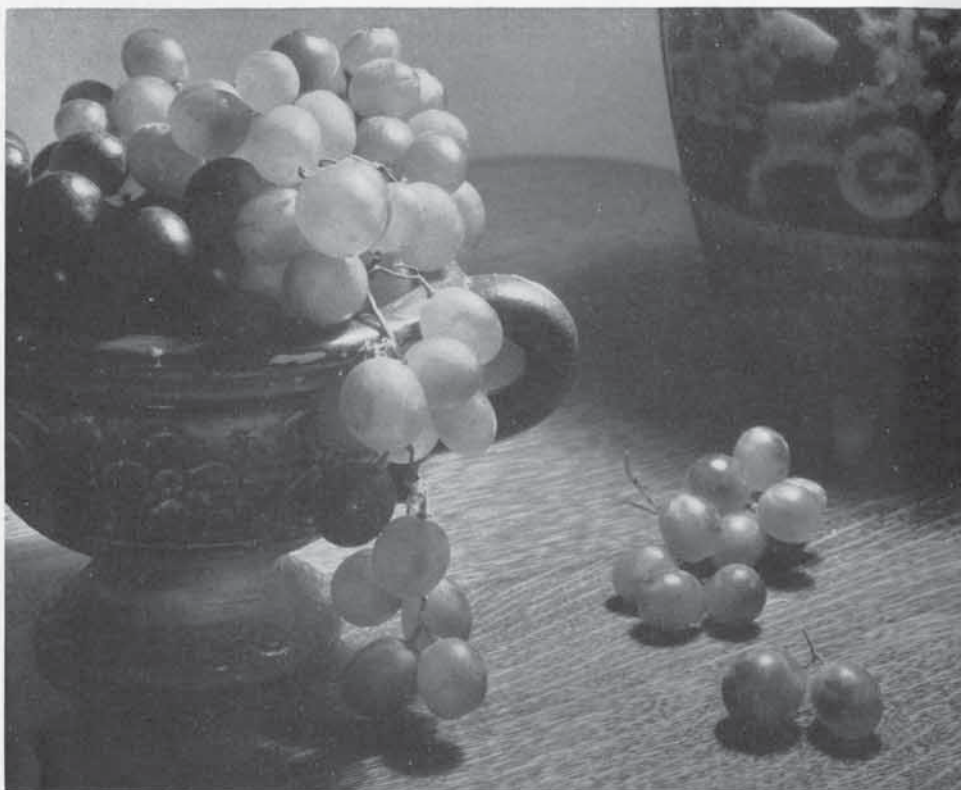
Glacier Serac

Ray Atkeson



Meditation

George Alexander



Translucence

Edward W. Quigley

## ALMER COE AND COMPANY EXTENDS CORDIAL GREETINGS

For nearly one-half of the century of progress now being celebrated, the Almer Coe Stores have served those in Metropolitan Chicago whose aims and ideals in photography coincide with those of this International Salon.

To those participating in this exhibit and to the Chicago Camera Club, sponsors of the Salon, the Almer Coe organization sends best wishes.



Almer Coe & Company maintains its own modern photographic laboratory for the highest quality developing, printing and enlarging, to meet the most exacting demands.

THE FINE GRAIN DEVELOPER USED IN OUR PROCESSES  
MAKES CERTAIN THAT ALL THE VALUE OF YOUR  
NEGATIVES WILL BE RETAINED IN  
THE FINISHED PRINT



**LEICA • ZEISS • BELL & HOWELL  
EASTMAN**

Cameras, Supplies, Film, Motion Picture Equipment

We invite you to visit  
our stores

**Almer Coe & Company**

*Optical, Photographic & Meteorological Instruments*

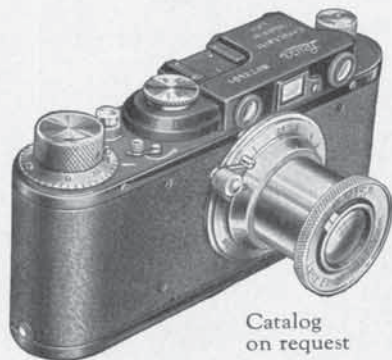
105 N. Wabash Ave. 78 E. Jackson Blvd. 18 S. La Salle St.

CHICAGO

1645 Orrington Ave., Evanston

# BASS is Camera Headquarters

CHICAGO is the Home of BASS . . . Headquarters for camera enthusiasts, both *Movie and Still*. For over twenty years . . . VALUE CENTER. Be sure to visit our establishment. All that is *new* in photography may be inspected. Old cameras accepted as part payment on new apparatus.



Catalog on request

## LEICA, the Universal Camera

Everybody can operate a Leica. Everything photographic may be taken with a Leica. The *precision* camera of a thousand uses, may be had with choice of lenses and the Model D illustrated has a built in *range finder* . . . *automatic focussing* . . . takes 36 pictures at *one loading* . . . *focal plane shutter* . . . *weighs only 19 ounces* . . . convertible instantly for speed . . . *aero* . . . *micro* . . . *telephoto* . . . *wide angle* . . . *panorama* . . . *copy* . . . *portrait* . . . *amateur* . . . and candid camera work, truly a *universal camera*.

THE MODEL D, complete with F:3.5 Elmar lens and automatic focussing, including one magazine is . . . . . **\$92.50**

With F:2.5 Hektor lens, \$108.00

Standard Model Leica, with external range finder and F:3.5 Elmar lens and one magazine . . . . . \$66.00

## An UNUSUAL VALUE!

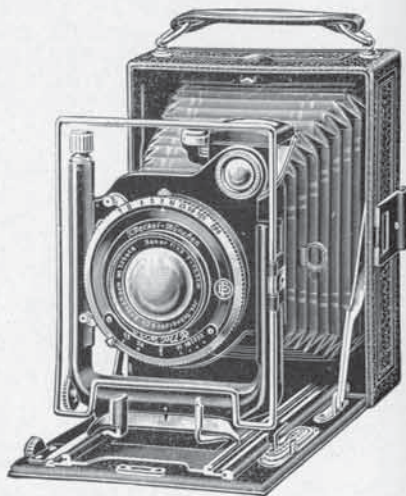
BASS . . . Value Headquarters . . . offers this 9x12 Welta Precision Camera for *film packs* and *plates*, all metal construction . . . ground glass focussing back . . . full double extension with wide track . . . rising and falling front . . . lateral movement . . . beautifully built.

Each instrument is complete with 5 1/4 inch Steinheil Unofocal Anasigmat lens, F:4.5, in new model Compur shutter with *automatic self-timing feature*, complete with film pack adapter and three holders at the record price of **\$25.50**

Same instrument, but fitted with a 5 1/4 inch Rodenstock Anasigmat lens, F:4.5, in Vario shutter, with film pack adapter and three holders at . . . . . \$18.50

Same instrument, but fitted with 6 inch Schneider Xenar F:3.5 lens in regular Compur shutter, film pack adapter and three holders at . . . . . \$44.50

Leather carrying case for either model . . . . . 4.50



Bass Bargaingrams are free for the asking. Editions covering Still Cameras, 16 mm. Motion Picture Apparatus, 35 mm. Motion Picture Apparatus and Lenses is ready. The Criterion of Camera Values.

## BASS CAMERA COMPANY

Camera Headquarters for Tourists 179 W. Madison St., Chicago



El Vaquero

Francisco Andrada



Fleeta

Bob Wallace



*All the Latest Kodaks Are  
on Display Here; We'll Be  
Glad to Let You See Them;  
No Obligation, of Course*

## We're Completely Stocked to Fill Your Photographic Needs

**I**F you're an out-of-town visitor to the Century of Progress Exposition, we want to tell you what most residents of Chicago already know—that our store is photographic headquarters.

We want your visit in Chicago to be a pleasant one . . . and a photographically worthwhile one. Come in . . . look around . . . ask questions. We'll be pleased to make your acquaintance—to be of service to you.



### *Try This New, Faster Film*

**K**ODAK Super Sensitive Panchromatic Film is 50% faster than Verichrome with morning or afternoon light—three times as fast as Verichrome by artificial light. It's double-coated and halation-proof. Being sensitive to *all* colors it gives correct tone values in the black and white print. Try some in your camera. It will multiply your snapshot opportunities. We have it in all popular sizes.

*We Cordially Invite You To Make This Store Your Photographic  
Headquarters While in Chicago*

NOTE: Chicago Camera Club on the Second Floor

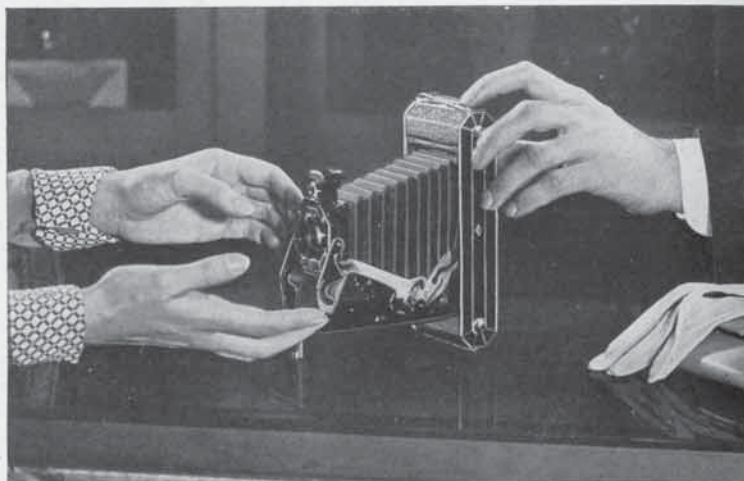
## EASTMAN KODAK STORES COMPANY

133 North Wabash Avenue . . . STAtE 8130



# For Your Convenience

A COMPLETE PHOTOGRAPHIC SERVICE  
ON THE EXPOSITION GROUNDS



*Visit Our Store in the Northeast  
Pavilion of the Hall of Science*

**S**TOP in at our store in the northeast pavilion of the Hall of Science... and avail yourself of the complete photographic service that's offered you there, including developing, printing and enlarging.

Take advantage, too, of the fact that, as authorized Eastman dealers, we keep our stock up-to-date with the very latest products from the Kodak factories.

When you're in the downtown district, call at our headquarters, 425 South Wabash Avenue. Whether at the fair or in the city, we'd be pleased to be of any help possible in making your visit an enjoyable one.

*"Official  
Photographers  
for the  
Exposition"*

**KAUFMANN & FABRY CO.**

MOST THOROUGHLY EQUIPPED PHOTOGRAPHIC PLANT IN AMERICA

*Main Office and Studio at 425 South Wabash Avenue*



Study of Hands

John Paul Pennebaker



Study from Venice

Direktor Victor Kammerer

## Headquarters For Every Known Photographic Need

No need to run to a half-dozen or more sources of supply for your photo needs—Norman-Willets Co. has concentrated them all for you under one roof. All the leading manufacturers in the world are represented in our stocks.

AGFA-ANSCO CORP. Cameras, Films, Papers	ILFORD, LTD. Plates, Films, Papers, Filters
BELL & HOWELL Cine Cameras, Projectors, Supplies	KEYSTONE MFG. CO. Cine Cameras, Projectors, Screens, Supplies
BURROUGHS, WELLCOME & CO., Inc. Tabloid Chemicals	E. LEITZ Leica Cameras, Microscopes
DEFENDER SUPPLY CO. Papers, Plates, Films	MALLINCKRODT CHEMICAL WORKS Chemicals
EASTMAN KODAK CO. Cameras, Papers, Films, Supplies, Movie Equipment	MIRAKEL OPTICAL CO. Binoculars
FOLMER GRAFLEX CORP. Graflex Cameras	WOLLENSAK OPTICAL CO. Lenses
GEVAERT CO., Inc. Papers, Plates, Films	CARL ZEISS, INC. Binoculars, Cameras, Lenses
HAMMER DRY PLATE CO. Plates, Films	VOIGTLANDER Cameras, Lenses

—and many other leading manufacturers.

We have recently more than doubled the size of our Retail Department. You are invited to inspect our display and avail yourself of the advantages of "NORWIL" Service.



MANUFACTURERS — IMPORTERS — DISTRIBUTORS

318 W. Washington St.

Tel. Randolph 8300

CHICAGO

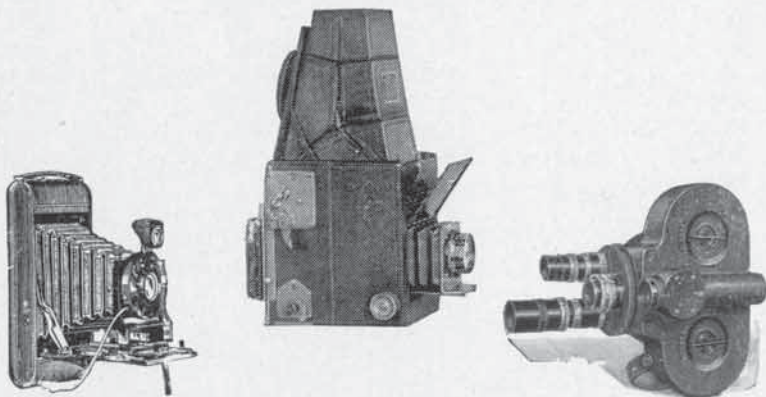
# CENTRAL CAMERA COMPANY

*Chicago's Photographic Headquarters*

230 South Wabash Avenue

(Near Jackson Boulevard)

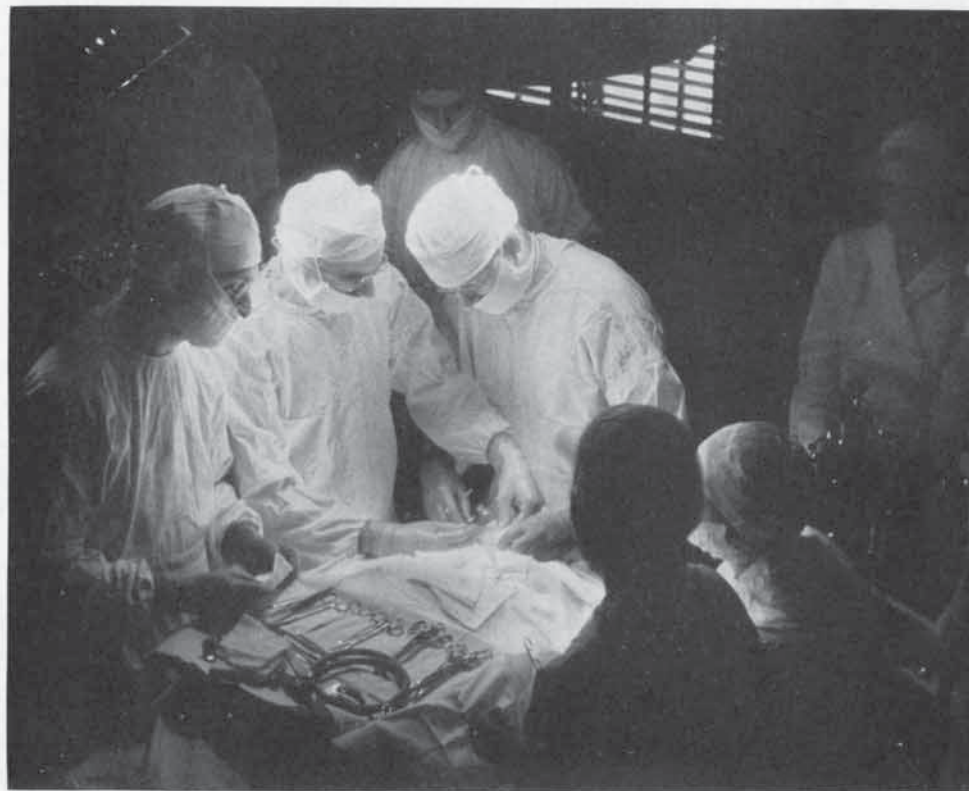
Chicago, Illinois



We have for FREE DISTRIBUTION a large CATALOGUE that is a complete exposition on photographic equipment and accessories.

Our customers all over the world are given prompt and careful attention by our mail order department.

*Visit our store  
and see a complete photographic exhibit*



A Life Is Saved

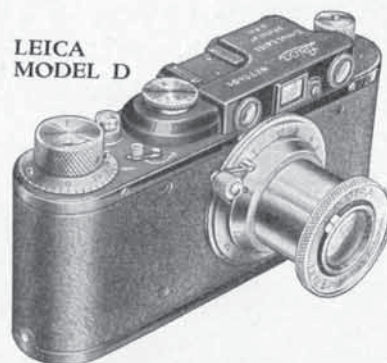
Dr. Harry Wright



Arida Colina

W. H. Orton

## For Speedy, Accurate and Versatile Photography, There's Nothing Like the



LEICA  
MODEL D

AUTOFOCAL  
CAMERA  
*Leica*  
REG. U.S. PAT. OFF.

ing copying equipment, enlarging apparatus, stereoscope attachment, projectors, micro attachments, etc.

5. **36 pictures from a single roll** of standard cinema film. Sharp negatives. Enlargements up to 12 x 18 inches or more.

6. **Stream Lined Beauty.** Compact, small, with no square corners or protruding knobs. All controls on top—right at your fingertips, for speed, accuracy, and convenience.

7. **Because LEICA** was the pioneer miniature camera 8 years ago, it was able to incorporate the best features of miniature camera design, not available in any other cameras today.

8. **The ideal travel camera**—fits the pocket, weighs only 19 oz.

Price with 50 mm ELMAR f:3.5 lens, \$92.50. 2-year guarantee certificate.

Write for free Illustrated Booklet "Why LEICA?" Monthly bulletin "LEICA PHOTOGRAPHY" sent to all registered LEICA owners.

### Here are the Reasons Why:

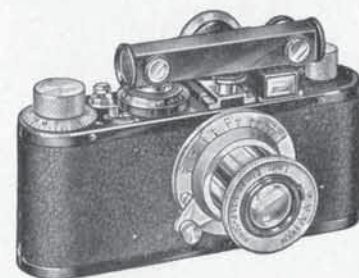
1. **Built-In Short Base Range Finder** gives you perfect focus instantly. Short base design saves time and insures accuracy by giving you a large, clear image with just a slight turn of the lens. Fastest and most accurate focusing device on any camera.

2. **Focal Plane Shutter** of standard cloth construction, eliminating internal reflections. Accurate speeds of from 1/20th to 1/500th second, also time exposures.

3. **7 Interchangeable Lenses**, including telephoto lenses, wide angle lenses, and others.

4. **Over 300 LEICA Accessories**, includ-

## Now Every Camera Enthusiast Can Own a LEICA



The STANDARD LEICA

A Leica Model within the intermediate price range—THE STANDARD LEICA! Has all the improvements of the Model D LEICA, with the exception of the built-in range finder. It is equipped however with a new type, short base range finder which is mounted horizontally on the camera, always ready for use but quickly swung out of the way when adjustments on the shutter-speed control are to be made.

Otherwise the STANDARD LEICA is identical with the Model D LEICA. It uses the same 7 interchangeable lenses as well as all the LEICA accessories. Price, **\$66** including Short Base Range Finder.....

The STANDARD LEICA may be converted at any time into the Model D LEICA, at a charge which brings the total cost no higher than the regular price of the Model D. You can buy the STANDARD LEICA now and have it converted whenever financially convenient. Write for free booklet "The Standard Leica."

Write to **E. LEITZ, Inc.** Dept. 303  
60 East 10th Street  
New York City



CW Gibbs

FOR FINEST RESULTS IN PICTORIAL WORK,  
 GEVAERT FILMS, PLATES, PAPERS,  
 USED THE WORLD OVER . . . . .  
 GRAND PRIX AND HORS CONCOURS AT  
 INTERNATIONAL EXPOSITIONS  
 SINCE ANTWERP 1894 . . . . .

THE GEVAERT COMPANY  
 OF AMERICA, INC. . . . .  
 160 E. Illinois St. at Mich. Av., CHICAGO  
 423-439 W. 55th Street, NEW YORK  
 345-349 Adelaide St., W., TORONTO  
 "SAY GAY'-VERT!"



Sentinels

W. R. Nielsen

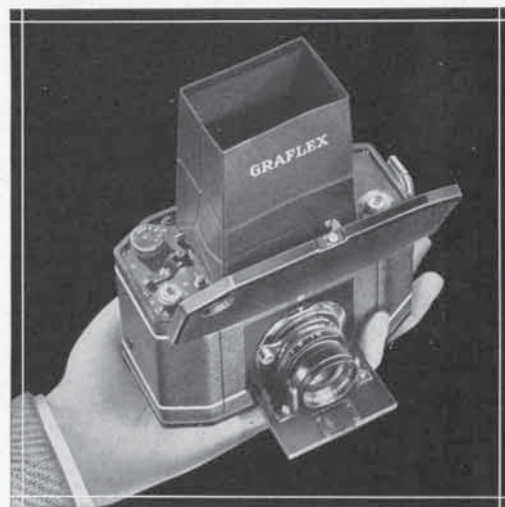


A Sea Banquet

F. J. Mortimer, Hon. F. R. P. S.

# National GRAFLEX

a natural complement  
to your present  
GRAFLEX equipment



Just a Handful

NATIONAL GRAFLEX is seeking its own level among present Graflex owners and serious photographers everywhere. Reaching the larger groups as well who have long desired Graflex features and Graflex results, it is demonstrating its simplicity of operation and completeness in every detail.

National GRAFLEX, with all the Graflex features, including direct vision focusing through the lens that takes the picture, superior lens, and dependable focal plane shutter, meets any requirement with maximum efficiency.

Added refinements enhance its value to the serious pictorialist. A built-in magnifier assures microscopic hair-line focusing. An ingenious automatic film measuring meter, securing ten roomy pictures  $2\frac{1}{4} \times 2\frac{1}{2}$  inches from No. 120 roll film, provides new economy—enables covering the ruby window after the initial setting for the entire ten pictures when supersensitive film is used. An exclusive film winding device renders plate-like performance to the roll film by drawing it taut across the focal plane for each picture.

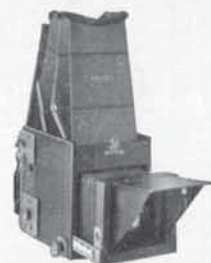
That National GRAFLEX is covered with genuine morocco leather; that it is fully self contained when closed; that it is small, compact, smart; that accessories including a full range of filters, sunshade, carrying cases, are available to it; that it may be had at but \$67.50—all these facts are only a partial story of this newest Graflex camera.

Whether you are a present Graflex user, an owner of other fine equipment, or a newcomer to precision equipment, call on your dealer for a self demonstration and plan to be surprised at the fine points built into National GRAFLEX.

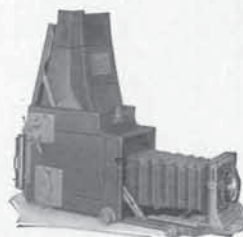


• If you wish to receive a copy of "See America," a booklet filled entirely with Graflex-made pictures, and desire additional information about the National or other Graflex cameras, write to Folmer Graflex Corporation, Dept. C, Rochester, New York.

## OTHER FAVORITES



Series D GRAFLEX



Auto GRAFLEX

**FOLMER GRAFLEX CORPORATION, Rochester, N. Y.**

FOR THE NEGATIVE



## Plenachrome Film

THE FAMOUS Plenachrome type of Agfa Film is supplied in Rolls and Packs with a speed more than twice as great as ordinary film; also in a special Fine-Grain Roll (FA 8, for cameras taking vest-pocket size film) and in an exclusive Agfa Cartridge (for Leica, Contax and similar cameras) at a speed still higher than regular Plenachrome; also in Cut Film of supersensitive speed.

FOR THE SALON PRINT



## Brovira Paper

BROVIRA is a paper of standard bromide speed, supplied in a variety of practical, interesting, and attractive surfaces, and in several degrees of contrast.

Its points of superiority are easily recognized at the first trial: (1) Ease of manipulation, (2) Exceptional latitude, (3) Excellent blacks—freedom from the grayish, smoky tones that identify so many enlargements as "bromides," (4) Fine salon quality, (5) Remarkable depth and roundness. The separation of planes is really outstanding.

*Correspondence invited*

AGFA ANSCO, Binghamton, N. Y.

CHICAGO, ILL.    LOS ANGELES, CAL.    SAN FRANCISCO, CAL.    KANSAS CITY, MO.  
CINCINNATI, O.    BOSTON, MASS.  
CANADA: AGFA ANSCO LIMITED, TORONTO



Galope Matutino

Walter Lipkau



Sheep in the Sierras

Lt. George R. Johnson

## The Art Institute of Chicago

*Will Contain the*

OFFICIAL ART EXHIBITION OF  
A CENTURY OF PROGRESS EXPOSITION

*June 1 to November 1, 1933*



*Portrait of His Mother — Whistler*

**T**HERE will be no exhibition of paintings and sculpture on the Fair grounds. Twenty-seven museums and two hundred and twenty-five private collectors have loaned their most important paintings. The great masters of all time, Holbein, Memling, Roger van der Weyden, Lucas van Leyden, Rembrandt, Hals, El Greco, Zurbaran, Goya, Titian, Tintoretto, Veronese, Hobbema, Gainsborough, Raeburn, Poussin, Watteau, Chardin will be represented by outstanding works. The great creative artists and epochal painters and sculptors of the last 100 years will be emphasized by large groups or special rooms. Daumier, Delacroix, Millet, Corot, Manet, Degas, Renoir, Monet, Van Gogh, Gauguin, Toulouse-Lautrec, Matisse, Picasso, Bonnard, Derain, and Segonzac, among foreign painters will be thus honored, and Stuart, Copley, Whistler, Sargent, Homer, Ryder, Twachtmann, Mary Cassatt, Davies and Bellows from among our own painters. An exhibition of prints both contemporary and retrospective is shown in eight galleries. A special exhibition of the work of students of the Art Institute Art School is shown in Blackstone Hall, on the ground floor.



## THE SIXTH CHICAGO INTERNATIONAL PHOTOGRAPHIC SALON

---

SINCE 1903 the Art Institute of Chicago and the Chicago Camera Club have cooperated in presenting an annual exhibition of pictorial photography. For many years the pictures exhibited were produced by the Club's members and by a few American non-members. In 1929 this exhibition became international in character, containing photographs made by the world's leading pictorial workers and the Chicago International Salon is now recognized as one of the foremost exhibitions of photographic art.

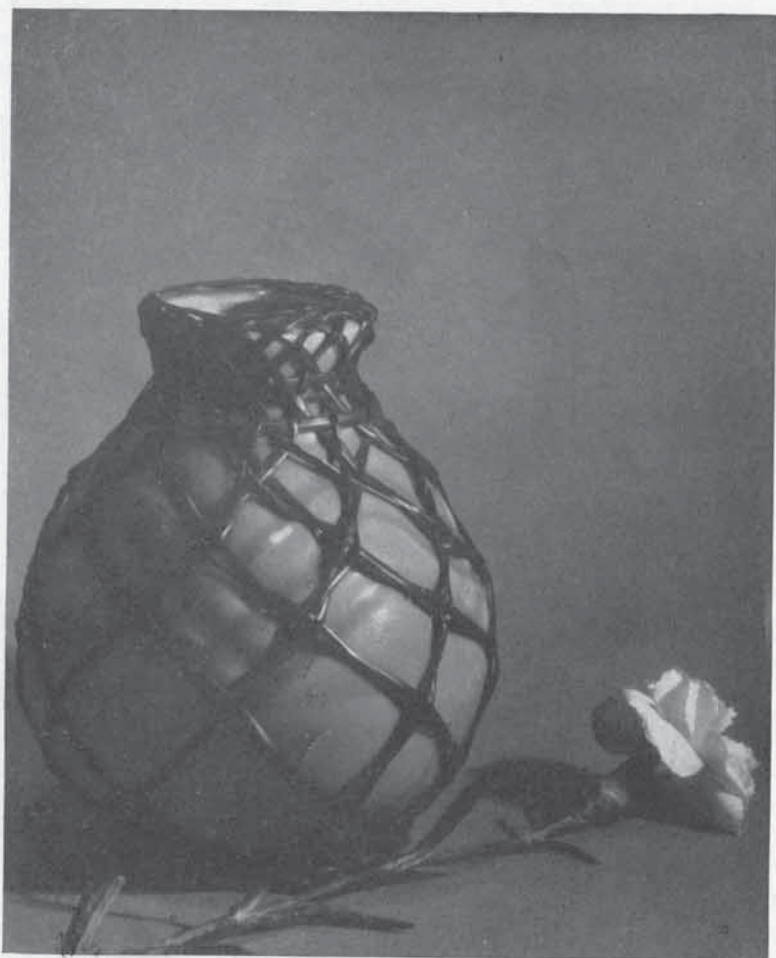
Now, for the first time in thirty years, the Chicago International Photographic Salon is held outside the Art Institute, as it has been considered appropriate to celebrate the termination of the first century of the photographic art in conjunction with A Century of Progress International Exposition.

The Art Institute of Chicago and the Chicago Camera Club take a justifiable pride in announcing that the thirty-first annual and SIXTH CHICAGO INTERNATIONAL PHOTOGRAPHIC SALON will be held at the Art Institute July 19 to October 14, 1934, thus continuing an institution that has become an outstanding event in Chicago art circles and that will ever remain a source of inspiration for those whose desire for self expression is gratified through the medium of the camera.



Half Way Down

Walter S. Meyers



Still Life

Shinsaku Izumi



Torso Study

Bertram Park



Evening on the Nile

H. W. Isaacs



Mary

H. Richardson Cremer



Shadow for Lantern

N. Matsumoto



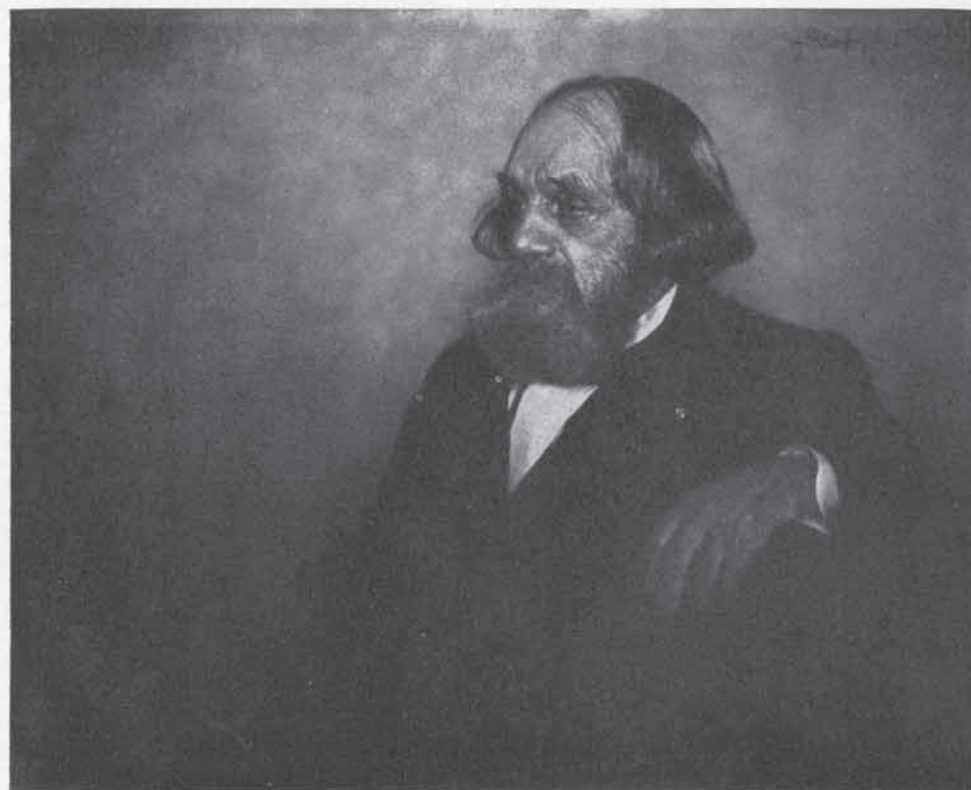
The Mirror

Will Till, A. R. P. S.



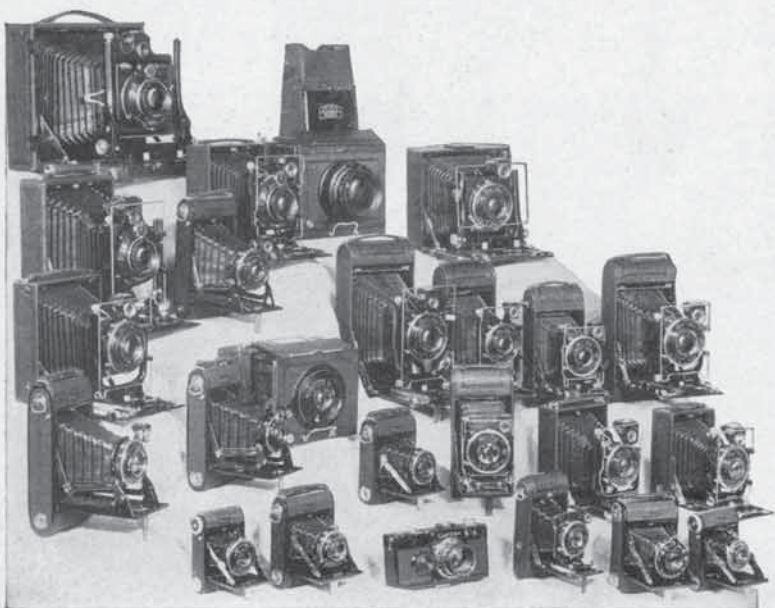
Indian

Joseph Berman



Reverend Edward Everett Hale

John H. Garo



## Quality first because quality lasts

**I**N these few words can be summed up the reason why you should own a Zeiss Ikon Camera. Their superior construction and convenient operation have won for them highest place among the World's finest cameras. The Zeiss Ikon line includes many models, ranging from the simple snapshot camera to the precision outfit. There's a type for every purse and purpose. See them at your dealer's or write to Carl Zeiss, Inc., 485 Fifth Avenue, New York or 728 So. Hill St., Los Angeles.



# Zeiss Ikon Cameras



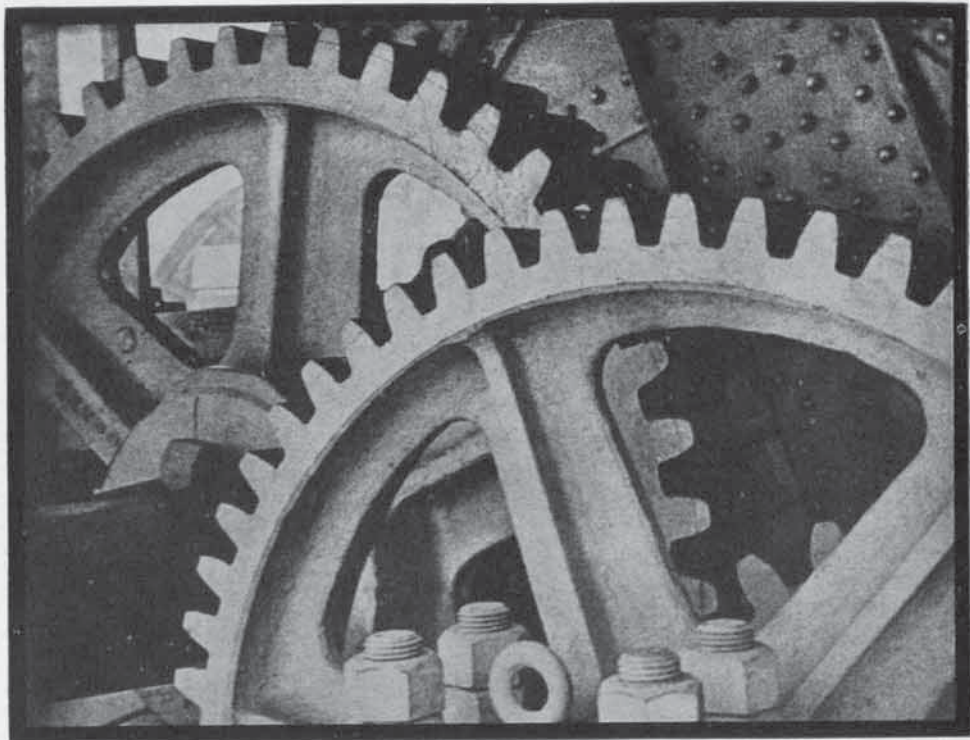
When hunting for a photo lens of quality, follow the judgment of millions of Zeiss Tessar users in all parts of the world. Proved by time under every conceivable condition, ZEISS TESSAR LENSES will also aid you to attain the ultimate in photography.

*Prices and particulars on application*

CARL ZEISS, INC., 485 FIFTH AVE., NEW YORK AND 728 SO. HILL ST., LOS ANGELES

TAKEN WITH  
ZEISS TESSAR LENS





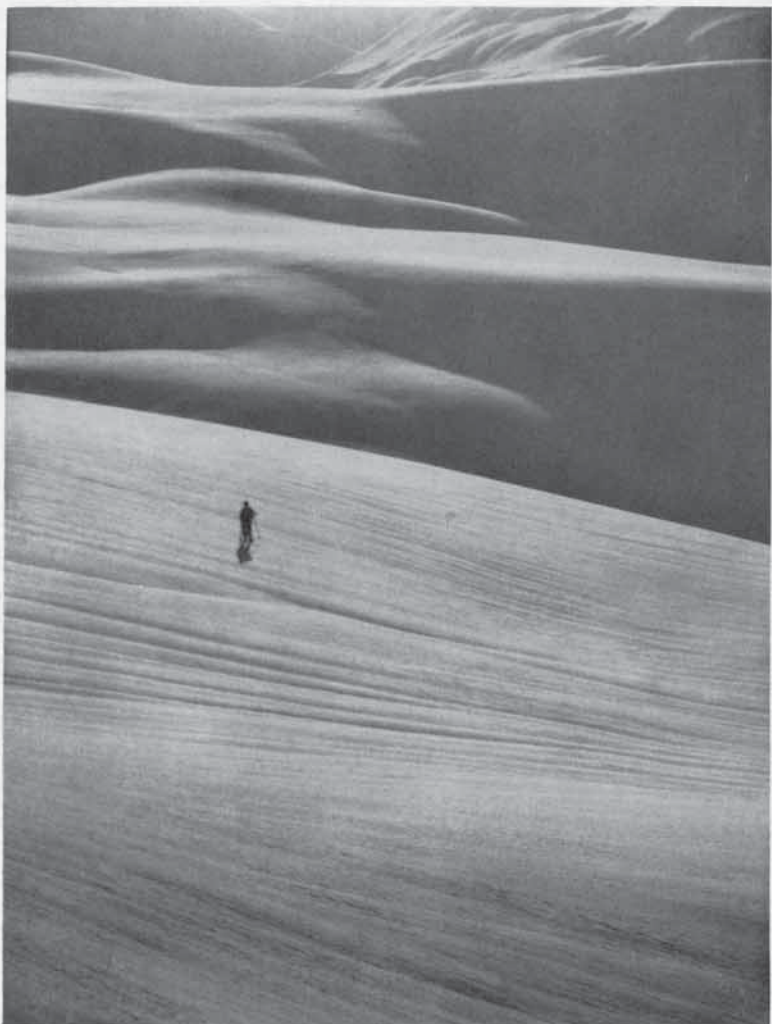
Force

Marion L. Strawn



Gardone Kirche

Ernst Holzöhner



Linee

Giulio Cesare



Morgennebel

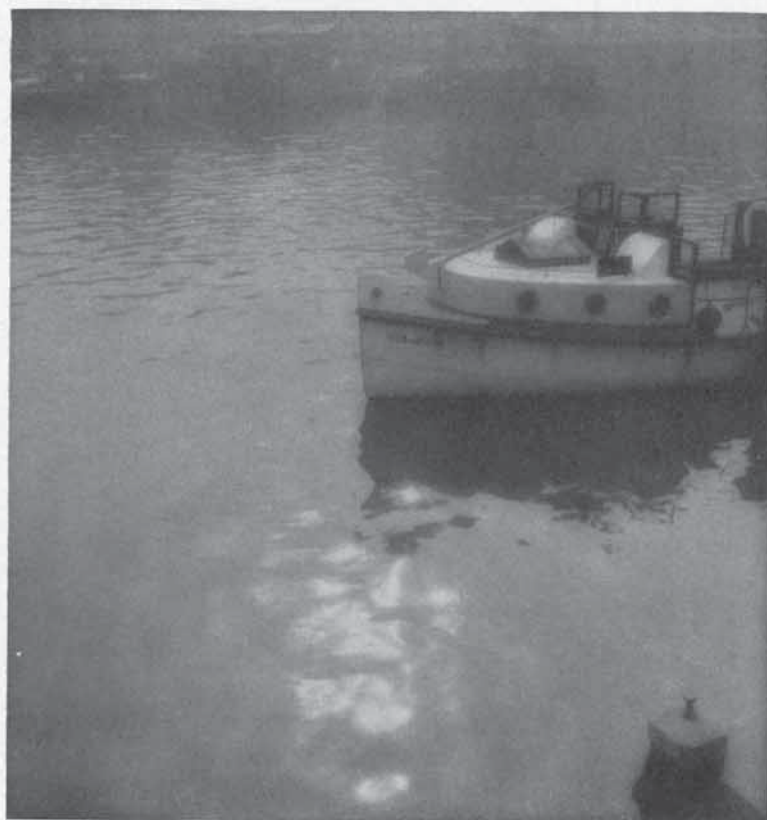
Fritz Scheibner





Water Rings

Ernö Vadas



Sparkling Light

G. J. Speekhout



Fritzie Ziegler

Louis Neunhofer



The Thames at Kew — Evening

C. Upton Cooke



Filled with Silvery Light

D. Berendsen



Harald Kreuzberg — King's Dance

Edwin Bolan



Nicolo Paganini

Wm. Mortensen



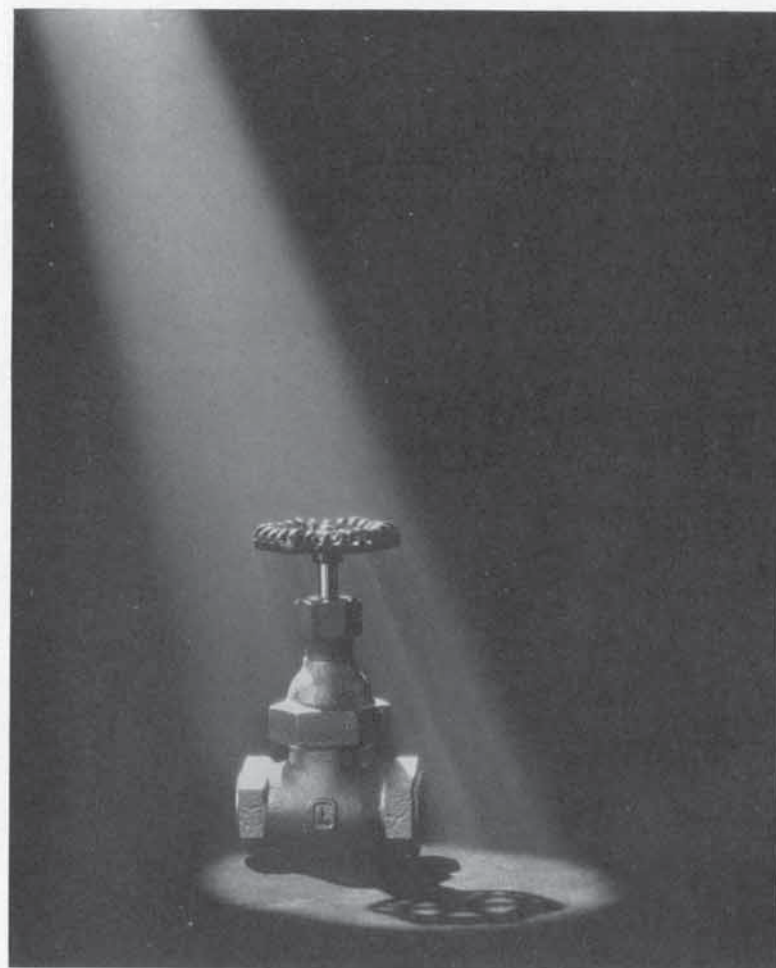
Yarn

Anton Bruehl



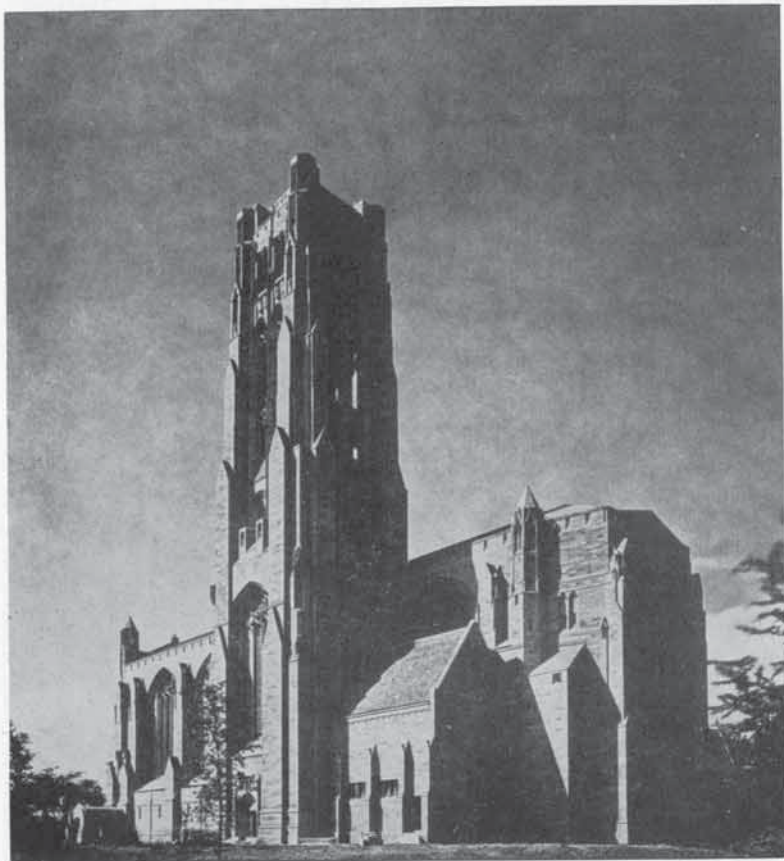
Step on 'er Dad

Dick Whittington



A Booklet Cover

Arthur Brand



University of Chicago Cathedral

R. W. Trowbridge



Ueberfall — The Attack

Paul Unger



Three Dimensional Photograph at High Power

Francis F. Lucas

Structure of Manganese Steel, Water Toughened and Tempered  
at 750°. C. x 3500



Portrait of a Splitting Headache

X-Ray of an Infected Nasal Sinus

Eastman Kodak Co. — Research Laboratory



Northern Portion of Moon at Last Quarter — Copernicus to the Limb  
Mount Wilson Observatory



Long Distance Photography by Infra-Red Light

Capt. A. W. Stevens, U. S. Army Air Corps

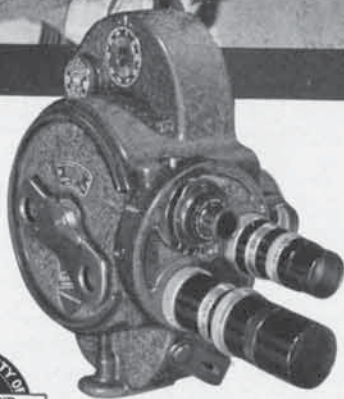


# Why not Get It Right with a FILMO

PERSONAL MOVIE CAMERA

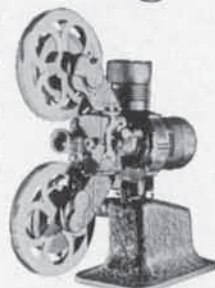


Those splendid youngsters—are you going to see them grow up without catching their precious childhood history in movies? Your vacations and travels—will you let them slip away without recording them in living pictures? Well, hardly. Such movies are too precious to lose. Take them with a Filmo, the 16 mm. camera that's always dependable, that copes successfully with any photographic condition. Filmo is backed by a longer service in motion picture machinery—personal and professional—than any other firm in the world has experienced. It is the choice of knowing movie makers everywhere.



Filmo 70-D, with 3-lens turret, 7 film speeds—a most versatile movie camera—is approved by the A. S. C., organization of professional cameramen.

## And Show It Right with a FILMO PROJECTOR



Filmo JL—finest 16 mm. projector

To see all that is in a good movie film, a projector of quality is essential. Filmo Projectors are generally conceded to be the finest—finest in the brilliance, clarity, and size of their pictures, finest in their longevity and constant dependability. Ten years\* of use under every conceivable operating condition have only served to enhance their early-gained reputation. Ask any leading photographic dealer for a demonstration.

# BELL & HOWELL FILMO

PERSONAL MOVIE CAMERAS AND PROJECTORS

Bell & Howell Company, 1831 Larchmont Avenue, Chicago, Illinois; New York, Hollywood, London (B & H Co., Ltd.) Established 1907

PROFESSIONAL RESULTS WITH AMATEUR EASE

## « « CATALOG » »

MANY OF THE PRINTS EXHIBITED ARE FOR SALE  
PLEASE SEE THE ATTENDANT FOR PRICES

The following symbols shown at end of line indicate the printing process used:

Bromide.....	B	Carbon.....	CA	Platinum or Palladium.....	P
Bromoil.....	BO	Carbro.....	CB	Transfer.....	TR
Chloride.....	CHL	Gum.....	G	Fresson.....	F
Chloro-Bromide.....	CHL B	Oil.....	O	Tri-Color.....	TC

These letters, following numbers, indicate:

S—Technical and Scientific Section. C—Commercial.

- |   |  |
|---|--|
| <p>●<br/>ABRAMOVICI, AUREL<br/>Vienna, Austria<br/>1. Die Zuschauerin.....CHL B</p> <p>ADAMS, ALBERT<br/>New York, New York<br/>2C. Observation Tower.....<br/>3C. Dentist's Hand.....</p> <p>ADAMS, MARCUS<br/>London, England<br/>4. An English Leddie.....<br/>5. Lady Honor Vaughan.....<br/>6. Pets.....</p> <p>ALEXANDER, GEORGE<br/>Chicago, Illinois<br/>7. Decorative Study.....G<br/>8. Meditation.....G</p> <p>ALLEN, JOHN<br/>Philadelphia, Pennsylvania<br/>9. Golden Dawn.....B<br/>10. Along the Allegheny.....B<br/>11. Glow of the East.....B</p> <p>ANDERSON, ARTHUR E.<br/>Chicago, Illinois<br/>12. Chicago Japanesque.....CHL B<br/>13S. Reptile Rhythm.....CHL B</p> <p>ANDRADA, FRANCISCO<br/>Madrid, Spain<br/>13B. El Vaquero.....</p> <p>ANDRES, EDWARD<br/>Brooklyn, New York<br/>14. One Tug.....CHL</p> <p>ANTONELLI, SEVERO<br/>Philadelphia, Pennsylvania<br/>15. Leopold Stokowski.....B</p> <p>AONZO, CAV. ENRICO<br/>Genoa, Italy<br/>16. Riflessi sul Lago.....B<br/>17. Sabbia e Mare.....B</p> | <p>ARCHER, A. STAUNTON<br/>Toronto, Canada<br/>18. A Pair of Candles.....CHL B</p> <p>ARCHER, CHARLES K.<br/>Pittsburgh, Pennsylvania<br/>19. Cumulus.....BO<br/>20. Summer Clouds.....BO</p> <p>ASHTON, F. G.<br/>Ottawa, Canada<br/>21. Snow Texture.....B</p> <p>ATKESON, RAY<br/>Portland, Oregon<br/>22. Glacier Serac.....</p> <p>AUSZMANN, JOSEPH<br/>Philadelphia, Pennsylvania<br/>23. Elemek Játszadózó Mosolya.....B</p> <p>AVERY, NORTON LOUIS<br/>Lansing, Michigan<br/>24. Grandeur.....CHL<br/>25. The Weary Traveler.....CHL</p> <p>AYLETTE, CHARLES, F.R.P.S. (Juror)<br/>Toronto, Canada<br/>26. Cabaret.....<br/>27. Portrait—Louise.....<br/>28. Portrait—Miss C.....<br/>29. Day Dreamer.....</p> <p>●<br/>BACHRACH, ERNEST A.<br/>La Crescenta, California<br/>30C. Rita Le Roy.....CHL</p> <p>BAFFORD, EDWARD<br/>Baltimore, Maryland<br/>31. Low Tide.....CHL B</p> <p>BAHNSEN, AXEL<br/>Yellow Springs, Ohio<br/>32. Work.....CHL B</p> |
|---|--|

- BAIRD, EARL G.  
Pasadena, California  
33. Drying \_\_\_\_\_ B
- BAIRSTOW, HERBERT, F.R.P.S.  
Halifax, England  
34. The Dieppe Paris Express \_\_\_\_\_ BO TR
- BAKER, F. C.  
Cleveland, Ohio  
35. Moonlight \_\_\_\_\_ B  
36. Turkeys and Snow \_\_\_\_\_ B
- BAKER, MISS VIROQUE  
Los Angeles, California  
37C. The Waffle Iron \_\_\_\_\_ B
- BALOGH, RUDOLF  
Budapest, Hungary  
38. Factory Stillstand \_\_\_\_\_ B  
39. Snow Ball Fight \_\_\_\_\_ B  
40. Winter Shadows \_\_\_\_\_ B  
41. Bird's Eye View \_\_\_\_\_ B
- BALOUSEK, RAYMOND A.  
Chicago, Illinois  
42. Baby Clothes \_\_\_\_\_ CHL B  
43. Portrait \_\_\_\_\_ B
- BANKS, DR. ALFRED E.  
San Diego, California  
44. Man of Sorrows \_\_\_\_\_ BO TR  
45. Sage \_\_\_\_\_ BO TR
- BANSE, ERNST  
Frankfurt, Germany  
46. Bäume im Winter \_\_\_\_\_ BO TR
- BARNEY, ALLAN F.  
Chicago, Illinois  
47. Lady in White \_\_\_\_\_ B
- BARROWS, ROBERT A.  
Philadelphia, Pennsylvania  
48. Amphitheatre \_\_\_\_\_ B  
49. Contact \_\_\_\_\_ B  
50. In Port \_\_\_\_\_ B
- BARRY, JOHN, JR.  
Cedar Rapids, Iowa  
51. Shadows \_\_\_\_\_ CHL B
- BARSBY, JACK  
Beverly Hills, California  
52. Good Morning \_\_\_\_\_ B  
53. Maxine \_\_\_\_\_ BO TR
- BARTLETT, ADELBERT  
Los Angeles, California  
54. Roman Gateway \_\_\_\_\_ B  
55. Web of Life \_\_\_\_\_ B
- BARTU, AUGUSTIN  
Hamburg, Germany  
56. Grauer Wintertag \_\_\_\_\_ B  
57. Durchblick \_\_\_\_\_ B
- BATE, THOMAS H.  
Phoenix, Arizona  
58. El Troubador \_\_\_\_\_
- BAUER, ATELIER  
Karlsruhe, Baden, Germany  
59. Frauenacht \_\_\_\_\_ B  
60. Der Farmer \_\_\_\_\_ B  
61. Kindesschmerz \_\_\_\_\_ B
- BAUER, ERICH  
Karlsruhe, Baden, Germany  
62C. Steuer \_\_\_\_\_ B  
63. Künstlerpaar \_\_\_\_\_ B
- BECKETT, L. J.  
Bournemouth, England  
64. The Thames at Westminster \_\_\_\_\_ B
- BEDDIES, MRS. LIJSE  
Braunschweig, Germany  
65. Schale im Licht \_\_\_\_\_ B
- BEIDLEMAN, FRED  
San Diego, California  
66. Pair and Repair \_\_\_\_\_ B
- BERENDSEN, D.  
Djocjakarta, Java  
67. Filled with Silvery Light \_\_\_\_\_ B
- BERMAN, JOSEPH  
Staten Island, New York  
68. Portrait of Indian \_\_\_\_\_ CHL
- BERNIE STUDIO  
Evanston, Illinois  
69. Claire \_\_\_\_\_ G  
70. Sonny Boy \_\_\_\_\_ G
- BERTOGLIO, ITALO  
Torino, Italy  
71. Tennis \_\_\_\_\_ B
- BETHUNE, EDITH HALLETT  
Beswick, Nova Scotia, Canada  
72. Evangeline—before Cape Blomidon \_\_\_\_\_ B
- BETZ, FRANK M.  
Dayton, Ohio  
73. Stone Stairway—1846 \_\_\_\_\_ CHL B
- BEUTLER, WILLI  
Hamburg, Germany  
74. Scherben \_\_\_\_\_ B
- BILL, FRED R.  
Cleveland, Ohio  
75. Treasures \_\_\_\_\_ B

- BING, JOSEPH M., F.R.P.S.  
New York, New York  
76. Visiting \_\_\_\_\_ B  
77. Passage at the Castle \_\_\_\_\_ BO
- BIRN, SAMUEL  
Brünn, Czechoslovakia  
78. By Rain Spoiled Market \_\_\_\_\_  
79. Light and Shadow \_\_\_\_\_
- BLAIR, G. L. A., F.R.P.S.  
Paisley, Scotland  
80. Clio—Closehauled \_\_\_\_\_ CHL B  
81. Shamrock IV \_\_\_\_\_ B  
82. Down Spinnaker \_\_\_\_\_ B  
83. Hard Weather \_\_\_\_\_ B
- BLAKESLEE, ALPHEUS A.  
Pasadena, California  
84. Sky Rocket \_\_\_\_\_ B
- BLANK, HENRY J.  
Yonkers, New York  
85C. Welding \_\_\_\_\_
- BODINE, A. AUBREY  
Baltimore, Maryland  
86C. Towers of Strength \_\_\_\_\_ CHL  
87. Two Nuns \_\_\_\_\_ B  
88. Balance \_\_\_\_\_ CHL
- BOLAN, EDWIN  
Hinsdale, Illinois  
89. Harald Kreutzberg \_\_\_\_\_ B  
90. Harald Kreutzberg—Kind's Dance \_\_\_\_\_ B
- BORIS  
Boston, Massachusetts  
91. A Man's Game \_\_\_\_\_ CHL  
92. Reflections \_\_\_\_\_ CHL  
93. Miss X \_\_\_\_\_ CHL
- BORIS, NICKOLAS, F.R.P.S.  
Cincinnati, Ohio  
94. Bas Relief \_\_\_\_\_ CHL
- BOZLER, KARL  
Rochester, New York  
95. Another Day \_\_\_\_\_ CHL
- BRAND, ARTHUR  
Cincinnati, Ohio  
96C. A Booklet Cover \_\_\_\_\_
- BRIGDEN, ALFRED  
Toronto, Canada  
97. The Alchemist \_\_\_\_\_ B
- BRIGGS, FERRIS  
New York, New York  
98. Cap'n Dan \_\_\_\_\_ BO TR  
99C. Rotonde \_\_\_\_\_ CHL B
- BRISTOW, F. B.  
Salina, Kansas  
100. The Temple of Ceres \_\_\_\_\_ B  
101. The Shadow on the Bins \_\_\_\_\_ B
- BRODERICK, DAN J.  
Windsor, Connecticut  
102. Arthur Hammond, A.R.P.S. \_\_\_\_\_ B
- BROWNELL, ROWENA  
Providence, Rhode Island  
103. Kitchen Still Life \_\_\_\_\_ CHL B
- BRUHEL, ANTON  
New York, New York  
104C. Yarn \_\_\_\_\_ CHL
- BRUNING, WALTER P.  
Euclid, Ohio  
105. Ship Mechanics \_\_\_\_\_ CA
- BUEHMAN, AL.  
Tucson, Arizona  
106. Lolita \_\_\_\_\_
- BUTLER, EDWARD K.  
San Francisco, California  
107. Half Dome \_\_\_\_\_ B
- BUTLER, E. V.  
Houghton, Michigan  
108. Home's Greatest Gift \_\_\_\_\_ B
- CAMPBELL, HELEN, A.R.P.S.  
Southam, Rugby, England  
109. Modern Pattern \_\_\_\_\_ BO
- CARLISLE, HOLMS  
Paisley, Scotland  
110. Going Strong \_\_\_\_\_ B
- CASTONGUAY, J. ALEX.  
Ottawa, Canada  
111. La Canadienne \_\_\_\_\_ B
- CAUFIELD, JAMES M. (Juror)  
Louisville, Kentucky  
112. Construction \_\_\_\_\_ B  
113. Woodland Draperies \_\_\_\_\_ G  
114. Speed Memorial \_\_\_\_\_ B  
115. Kentucky Trees \_\_\_\_\_ G
- CAWOOD, ALBERT E.  
Los Angeles, California  
116C. Majestic Rhythm \_\_\_\_\_ B
- CESARE, GUILIO  
Torino, Italy  
117. Linee \_\_\_\_\_ B  
118. Fuga di greadini \_\_\_\_\_ B

- CHAMBERS, W. F. A.  
Geneva, Switzerland  
119. Down the Lane-Bastia, Corsica.....B
- CHAMPLIN, H. R.  
Los Angeles, California  
120. Loiterer's Post.....BO TR
- CHANT, F. H.  
Pittsfield, Massachusetts  
121. Curves.....B
- CHICAGO ARCHITECTURAL PHOTO-  
GRAPHING COMPANY  
Chicago, Illinois  
122C. Detail Travel and Transport—A Cen-  
tury of Progress.....
- CHRISTIANSON-LEBERMAN  
Austin, Texas  
123. Emily Ann.....B
- CHEN, CHUEN-LIN  
Shanghai, China  
124. In a Temple Courtyard.....B
- CLEVELAND, PORTER S.  
Hollywood, California  
125. Captive.....B
- CLODI-TITZE, HELENE  
Linz, Austria  
126. Winterzauber.....B  
127. Skifahrten.....B
- COLLINS, JOHN F., F.R.P.S.  
Syracuse, New York  
128C. Corona Adding Machine.....
- CONHEIM, BERNARD B.  
Chicago, Illinois  
129. A Kentucky Idyl.....CHL
- COOKE, C. UPTON  
London, England  
130. The Thames at Kew—Evening.....B  
131. "Greater Love Hath No Man Than  
This—".....B
- COOPER, ERNEST H.  
Blackpool, England  
132. Concentration.....CHL
- COOPER, LOYD  
Claremont, California  
133. Pause.....CHL  
134S. "Mud Pots" of Salton Sea.....CHL
- COSTAIN, HAROLD HALIDAY  
Scarsdale, New York  
135C. Architectural Fantasy.....CHL B
- COSTER, GORDON  
Chicago, Illinois  
136. Composition in Shadows.....CHL  
137C. Fire Fighters.....CHL
- CRAIG, DAVID AND ELEANOR  
Pittsburgh, Pennsylvania  
138. Lassie.....CA
- CREMER, H. RICHARDSON  
Upper Montclair, New Jersey  
139. Rhythm.....CHL  
140. Benevolence.....CHL  
141. Mary.....CHL
- CROSS, GERALD  
Lathrop, Missouri  
142. "Idlers—Evening".....BO
- CUTTING, DR. JAMES A.  
Agnew, California  
143S. X-Ray of Sea Shells.....CHL B
- DAILEY, ARTHUR  
Evanston, Illinois  
144. The Horse Wrangler.....B  
145. Cowboy.....B
- DE BURGENI, KARMA H.  
Chicago, Illinois  
146. Semana Santa Sevilla.....BO
- DE CARVALHO, DR. ARTHUR  
Shanghai, China  
147. Chinese Madonna.....B
- DE LARDI, ALFRED A., A.R.P.S.  
Philadelphia, Pennsylvania  
148C. Syncopators.....CHL B  
149. The Lone Pine.....CHL B
- DEMACHY, ROBERT  
Paris, France  
150. The Poet.....O  
151. Portrait de Miss M.....O
- DOZSA, CAPTAIN DESIDERIUS  
Budapest, Hungary  
152. The Angler.....B  
153. Coming Home from the Field.....B
- DE VOS, LEON  
New York, New York  
154. Young Boy Laughing.....CHL
- DEWES, NORMAN E.  
Detroit, Michigan  
155. A Sunny Corner.....B  
156. Metropolitan Morning.....B

- DEWEY, ROY FRANKLIN  
Chicago, Illinois  
157. Summer Idyl.....CHL B
- DITTRICH, WILLARD  
Frankfurt, Germany  
158. Mohn.....CB
- DOOLITTLE, JAMES N.  
Los Angeles, California  
159. Deck Hands.....B  
160. U. S. S. Saratoga.....B
- DOONER, R. T.  
Philadelphia, Pennsylvania  
161. Joseph Pennell.....  
162C. Poetry of Springs.....  
163C. R. C. A.....
- DORIN, JOSEPH  
Chicago, Illinois  
164. A Speed Symbol.....B
- DORN, ALBRECHT  
Leipzig, Germany  
165. "Erika".....B
- DRTIKOL, FRANK  
Prague, Czechoslovakia  
166. Torso.....
- DUFFY, EDMUND J.  
Philadelphia, Pennsylvania  
167C. Brass.....B
- DUNCAN, WILLIAM CLIVE  
Chicago, Illinois  
168C. Chance.....CHL  
169C. Young Explorers.....CHL
- EASTMAN KODAK COMPANY  
Rochester, New York  
170S. X-Ray Portrait of a Splitting Headache  
171S. X-Ray of Eastman Automatic Tray  
Syphon.....  
172S. Photography by Heat Radiation.....  
173S. Infra-red Photography of Landscape.....  
174S. X-Ray Diffraction Patterns.....  
175S. Photomicrographs of Living Bacteria,  
Showing Flagella.....  
176S. Use of Ultraviolet Light in Photo-  
micrography for Increased Resolu-  
tion.....  
177S. Use of Ultraviolet Light in Photo-  
micrography for Differentiation.....  
178S-A. Photomicrographs of Meteorite.....  
178S-B. Northern Portion of Moon at Last  
Quarter, by Mt. Wilson Observa-  
tory.....  
178S-C. Solar Corona, by Lick Observatory.....
- EBERLE, MERWIN  
Oklahoma City, Oklahoma  
179. The Resting Herd.....B
- ECHAGUE, J. ORTIZ  
Madrid, Spain  
180. Baby Sleeping.....CA  
181. Quiet Sleep.....CA
- EKELUND, GUNNAR  
Torsby, Sweden  
182. Saltsäcker.....B
- ERICKSON, JOHN A.  
Erie, Pennsylvania  
183. Portrait.....B  
184. Portrait.....B
- ERITH, JOHN, A.R.P.S.  
Crordon, England  
185. "I Betrayed".....
- EVANSMITH, FLORENCE  
Hollywood, California  
186. Gloria.....CHL
- FARDEL, H.  
Paris, France  
187. Sous le grain.....BO
- FASSBENDER, ADOLF  
New York, New York  
188. The Ice Serpent.....  
189. Hazel.....  
190. The Crinoline.....
- FELEGYHAZY, DR. LAD. V.  
Budapest, Hungary  
191. Bathing Boy.....B  
192C. Balkons.....B
- FERRANTINO, MATTHEW  
Brooklyn, New York  
193. Power.....B  
194. Physique.....B  
195. Physique Pictorial.....B
- FINKENSTEIN, COUNTESS CARMEN  
Berlin, Germany  
196. Vor Samarkand.....BO  
197. Auf der Landstrasse.....BO
- FISCHER, SIGURD  
Great Neck, L. I., New York  
198C. Concentration.....B
- FLECKENSTEIN, LOUIS  
Long Beach, California  
199. Young America.....CHL  
200. Sara Holm.....CHL  
201. His First Overcoat.....CHL
- FLETCHER, CHRISTINE B.  
San Francisco, California  
202. Composition in Circles.....CHL B  
203. Full Measure.....CHL B

- FORBATH AND REJAE  
New York, New York  
204C. Fashion—Courtsey Henri Bendel,  
Inc. \_\_\_\_\_ CHL B
- FRAME, RICHARD R.  
Philadelphia, Pennsylvania  
205. Fishing Town \_\_\_\_\_ CHL B  
206. Ceramics \_\_\_\_\_ CHL B
- FRAPRIE, FRANK R., F.R.P.S. (Juror)  
Boston, Massachusetts  
207. Abingdon \_\_\_\_\_ B  
208. The Path \_\_\_\_\_ B  
209. Fenway \_\_\_\_\_ B  
210. The Half-dark Wood \_\_\_\_\_ B
- FREIBERGER, PAUL  
Vienna, Austria  
211. Die Neue Zeit \_\_\_\_\_ B
- FREIWIRTH, DESIDER  
Budapest, Hungary  
212. Winter Landscape II \_\_\_\_\_ B
- FREY, CARROLL  
Philadelphia, Pennsylvania  
213. Laid Up \_\_\_\_\_ CHL B
- FUKUYAMA, HIDEHARU  
Los Angeles, California  
214. Meditation \_\_\_\_\_ B  
215. Sunny Pasture \_\_\_\_\_ B  
216. Twilight \_\_\_\_\_ B
- FURUKAWA, K.  
San Francisco, California  
217. Ikeri \_\_\_\_\_ B
- GANAWAY, K. D.  
Chicago, Illinois  
218. In Tow \_\_\_\_\_ B  
219. Spirit of the Great Lakes \_\_\_\_\_ B
- GARO, JOHN H.  
Boston, Massachusetts  
220. Mr. Enneking \_\_\_\_\_ G  
221. Reverend Edward Everett Hale \_\_\_\_\_ G  
222. Laurent Torno—man with flute \_\_\_\_\_ G  
223. Sunset Evening Clouds \_\_\_\_\_ G
- GARRETT, NORMAN RHOADS  
Prescott, Arizona  
224. Hopi Indian \_\_\_\_\_ CHL B
- GEORGE, KARL  
Dayton, Ohio  
225. The Sage \_\_\_\_\_ B
- GETSINGER, FLOYD R.  
Phoenix, Arizona  
226. Desert Beauties \_\_\_\_\_ B
- GEYLER, LOUIS  
Chicago, Illinois  
227. Smoky Chicago River \_\_\_\_\_ B
- GILCHRIST, WILLIAM  
Cleveland, Ohio  
228. Neck and Neck \_\_\_\_\_ CHL B  
229. Renunciation \_\_\_\_\_ CHL B
- GILPIN, MISS LAURA  
Colorado Springs, Colorado  
230. Sand Dunes \_\_\_\_\_ B  
231. Ranchos de Taos Mission \_\_\_\_\_ P
- GITTINGS, PAUL LINWOOD  
Houston, Texas  
232. So Shall Ye Reap \_\_\_\_\_
- GLASERSFELD, DR. LEOPOLD VON  
Merano, Italy  
233. Dte Matrosen \_\_\_\_\_ B
- GLATT, ALBERT  
New York, New York  
234. The Seer \_\_\_\_\_
- GLENN, ROLAND M.  
New York, New York  
235. Design in Concrete \_\_\_\_\_ B  
236. The Mooring Mast \_\_\_\_\_ B
- GOTLIN, CURT  
Orebro, Sweden  
237. Man with Pipe \_\_\_\_\_ CHL B
- GOULD, FLETCHER O.  
Pasadena, California  
238. Work on Deck \_\_\_\_\_ B  
239. Wear and Tear \_\_\_\_\_ B  
240. Polishing the Brass \_\_\_\_\_ B  
241. The Forward Mast \_\_\_\_\_ B
- GRABKAWICZ, DR. HANS  
Vienna, Austria  
242. Der Steuermann \_\_\_\_\_ B  
243. Study \_\_\_\_\_ B
- GRABNER, DR. ALFRED  
Vienna, Austria  
244. The White Bonnet \_\_\_\_\_ B  
245. My Model \_\_\_\_\_ B  
246. The Ambush \_\_\_\_\_ B  
247. Ox-eye Daisies \_\_\_\_\_ B
- GRAICHEN, MAX  
Crimmitschau, Germany  
248. Winternacht in den Bergen \_\_\_\_\_ B
- GREINER, ALVIN C.  
New York, New York  
249. At the Bull Fight \_\_\_\_\_ CHL  
250. Cynical \_\_\_\_\_ CHL

- GRIMM, BELA  
Budapest, Hungary  
251. Women of Fate \_\_\_\_\_ BO TR  
252. To Matius at Mezökövesd \_\_\_\_\_ BO TR
- GRÖGL, DR. FRITZ  
Vienna, Austria  
253S. Tigerin mit Jungen \_\_\_\_\_ B
- GRUBER, ALFRED  
Leipzig, Germany  
254S. Eintagsfliege auf Sonnenrose \_\_\_\_\_ B  
255S. Farbenspiel \_\_\_\_\_ B
- GRÜNWARD, DR. KARL  
Vienna, Austria  
256. Am Steg \_\_\_\_\_ B  
257. Beim Zug \_\_\_\_\_ B
- GURRIE, M.  
Chicago, Illinois  
258. Climax in Steel \_\_\_\_\_ CHL B
- HABRECHT, MAX  
Detroit, Michigan  
259. Study of a Lady \_\_\_\_\_
- HAJNY, DR. KAREL  
Prague, Czechoslovakia  
260. Les chaînes \_\_\_\_\_ B  
261. Les petites marches \_\_\_\_\_ B
- HAMMOND, ARTHUR, A.R.P.S.  
Boston, Massachusetts  
262. Jazz Landscape \_\_\_\_\_ B  
263. Porcelain and Metal \_\_\_\_\_ B  
264. Power \_\_\_\_\_ B
- HANNA, FORMAN  
Globe, Arizona  
265. Canyon Sand \_\_\_\_\_ CHL B  
266. Chateau, Bryce Canyon \_\_\_\_\_ CHL B
- HANSON, RAYMOND E.  
Melrose, Massachusetts  
267. The Hemlock Woods \_\_\_\_\_ BO  
268. Old New England Stone Wall \_\_\_\_\_ BO  
269. Shadows on the Dunes \_\_\_\_\_ BO
- HARRER, FIDELIS  
Chicago, Illinois  
270C. Shrimps \_\_\_\_\_ TC CB
- HARRIS, H. W.  
Paris, France  
271. The Pearl within the Oyster \_\_\_\_\_ B
- HART, VERNON CALVERT  
Chicago, Illinois  
272. Chicago Mists \_\_\_\_\_ B
- HARTING, G. W.  
New York, New York  
273. A Window Washer \_\_\_\_\_ CHL
- HARTMANN, KARL  
Frankfurt, Germany  
274. Frankfurter Bembel \_\_\_\_\_ B
- HAWKINS, G. L., F.R.P.S.  
Oxford, England  
275. A Corner of Polperro \_\_\_\_\_ BO TR  
276. A May Morning \_\_\_\_\_ BO TR
- HAZELHURST, JACK  
Hubbard Woods, Illinois  
277. Electra \_\_\_\_\_ CHL
- HEDRICH, KENNETH A.  
Chicago, Illinois  
278C. Hall of Science Entrance at Night \_\_\_\_\_ B
- HELDERS, JOHAN, F.R.P.S.  
Ottawa, Canada  
279. After the Storm \_\_\_\_\_ B
- HENRIQUES, JOSE VAL DO RIO DE  
CARVALHO  
Lisbon, Portugal  
280. Old Country Woman \_\_\_\_\_ B
- HERBERT, DONALD S.  
Weymouth, England  
281. Physique \_\_\_\_\_ CHL B  
282. Panel \_\_\_\_\_ CHL B
- HERRON, H. P.  
Akron, Ohio  
283. Chimneys of Industry \_\_\_\_\_ B
- HEYMANN, LIONEL  
Chicago, Illinois  
284. Shaft House Quincy \_\_\_\_\_ B
- HIGH, GEORGE HENRY, A.R.P.S.  
Chicago, Illinois  
285. Half Full \_\_\_\_\_ G  
286. A Genial Friend \_\_\_\_\_ G  
287. In the Shadow of Centuries, 2nd \_\_\_\_\_ CHL
- HODES, SOL  
Omaha, Nebraska  
288. Composition \_\_\_\_\_ B
- HOLZLÖHMER, ERNST  
Berlin, Germany  
289. "Gardone" Kirche \_\_\_\_\_ B
- HOPPE, E. O.  
London, England  
290. "Eileen" \_\_\_\_\_ B  
291. Market—Djakakarta, Java \_\_\_\_\_ B

HORYDCZAK, THEODOR  
Washington, District of Columbia  
292. Washington Monument..... B

HUBER, ERIKA GERTRUD  
München, Germany  
293. Stiefel..... B  
294. Draht..... B

HUEMER, RUDOLF  
Vienna, Austria  
295. Dächer..... B

HUNTOON, BERT  
Bellingham, Washington  
296. Mt. Baker..... B

IRWIN, HARRY L.  
Rochester, New York  
297C. Motion Picture Film..... CHL B  
298C. Aerial Lens..... CHL B

ISAACS, H. W.  
Paris, France  
299. Evening on the Nile..... P

ISRAEL, WILLIAM H.  
Port Huron, Michigan  
300. Miss Helen..... CHL

ITANI, ICHIRO  
Los Angeles, California  
301. Boats..... B

IZUMI, SHINSAKU  
Los Angeles, California  
302. Shadow..... B  
303. Still Life..... B

JACKSON, RAY LEE  
New York, New York  
304. Count Ilya Tolstoi.....

JENKINS, BRUCE  
Shanghai, China  
305. Perfect Control..... B  
306. Cheerful Labor..... B  
307. Contentment..... B

JOHNSON, GARRETT  
New York, New York  
308S. Aguadero (The Water Hole)..... B  
309S. Chivay, village in the Peruvian Sierra..... B  
310S. Andes of Central Peru..... B

JOHNSON, LT. GEORGE R.  
New York, New York  
311. Sheep in the Sierras..... B  
312S. Crater of El Misti..... B  
313. Hauling the Nets..... B  
314S. Outward Bound..... B

JOHNSON, L. EUGENE  
Louisville, Kentucky  
315. Loading Bananas..... CHL

JOHNSTON, C. M., A.R.P.S.  
Ottawa, Canada  
316. Standing By..... B  
317. Sorting Logs..... B

JORDAN, FRANKLIN I.  
Boston, Massachusetts  
318. Guardian of Walpi..... B

KAESER, FREDERICK, II  
Madison, Wisconsin  
319. Jane Ann..... CHL B

KAINZ, HANS  
Vienna, Austria  
320. Bergmäher..... BO TR

KALES, ARTHUR F.  
Los Angeles, California  
321. The Kiss..... BO TR

KAMMERER, VICTOR  
Vienna, Austria  
322. Study from Venice..... BO TR

KEENE, ROBERT E.  
Rochester, New York  
323. Mink Brook..... CHL B  
324. Flight..... CHL B

KEIGHLEY, ALEX, HON. F.R.P.S.  
Steeton, Keighley, England  
325. Stokesay Castto..... CA  
326. The Village Tailor..... CA  
327. Adieu!..... CA  
328. The Old Bridge—Sterling..... CA

KELCY, EUGENE  
Ft. Lauderdale, Florida  
329. Seminole Annie..... B

KELLEY, ROGER M.  
Pasadena, California  
330. Vacation Days..... B

KENNEDY, JOHN  
Toronto, Canada  
331. R. S. Van Vlack, Esq.....

KEPPLER, VICTOR  
New York, New York  
332C. Hand and Glass..... B  
333C. Cake..... B

KERN, ELAINE H.  
Chicago, Illinois  
334. Sand Island Activities..... CHL

KERN, DR. MAXIMILIAN  
Chicago, Illinois  
335. The Cynic..... CHL  
336. The Cellist..... CHL  
337. A Profile..... CHL

KEYES, D. B.  
Los Angeles, California  
338C. His Life Story..... B

KHAMBATA, PROF. SAM J.  
Bombay, India  
339. Mulatto..... B

KHAREGAT, SORAB J.  
Bombay, India  
340. Dignity of Labor..... B  
341. Le Savant..... B  
342. Painting the Ship..... B  
343. In the Land of Nod..... B

KIMURA, HISAC E.  
Los Angeles, California  
344. To Roof Garden..... B

KING, H. A.  
Boston, Massachusetts  
345. Seiners at Rest..... BO

KINSZKI, EMERIC  
Budapest, Hungary  
346. After the Rain..... B  
347. The Fast Train Comes!..... B  
348. City Sunshine..... B  
349. The Cat Family..... B

KOBAYASHI, T.  
Los Angeles, California  
350. Snow Water..... B

KOCH, ALFRED  
Graz, Austria  
351. Der Abend naht..... G

KRUPY, ALEX J.  
Chicago, Illinois  
352C. Old Door Hinge (University  
of Chicago)..... CHL B  
353. Three Ducks..... CHL B

KULLRICH, HELEN  
München, Germany  
354. Fasching..... B  
355. Liftboy..... B

KUTZER, FRITZ  
Cech. Teschen, Czechoslovakia  
356. Bridge..... B

LABAHN, BERNHARD  
Berlin, Germany  
357. Funkturm Berlin..... B  
358. Im Gegenlicht..... B

LAITY, WARREN R.  
New Brunswick, New Jersey  
359C. Patterns in Steel..... B

LAMARRE, RENE  
Paris, France  
360. Palais de Justice (Rome)..... BO TR

LANGE, DOROTHEA  
San Francisco, California  
361. Taos Girl..... CHL

LAUFFER, SOPHIE L., F.R.P.S.  
Brooklyn, New York  
362. Vannes..... B

LAUSCHMANN, DR. JAN  
Brno, Czechoslovakia  
363. July..... B  
364. Landscape..... B  
365. The Cliff..... B

LAWRENCE, CARL E.  
Claremont, California  
366. Reflected Sails..... CA

LE CRON, JAMES D.  
Des Moines, Iowa  
367. The Horses of St. Marks..... BO TR

LEIGHTON, J. HAROLD, F.R.P.S.  
Bradford, England  
368. An Old Inn (Ely)..... G

LEVENTON, ALEXANDER, A.R.P.S.  
Rochester, New York  
369. Eugene Goossens, Esq..... CHL B

LEWIS, GEORGE E.  
Mariemont, Ohio  
370C. Abraham Lincoln..... B

LIANG, ONN M.  
Canton, China  
371. Desire..... CHL B

LINDSTEAD, O. H.  
Pleasant Ridge, Michigan  
372. Industrial Pattern from Ambassador  
Bridge..... B  
373C. Iron Man..... B

LINKE, CHARLES  
Chicago, Illinois  
374. Mary Mina..... CHL B

LIPKAU, WALTER  
Mexico City, Mexico  
375. Galope Matutino..... B

LONGWELL, L. H.  
Chicago, Illinois  
376. The Woods in Winter..... CHL  
377. It's a Hit..... CHL

- LUCAS, FRANCIS F.  
New York, New York
- 378S. Plate I  
Three Dimensional Photograph at High Power.  
Structure of Manganese Steel, Water Toughened and Tempered at 750° C. x 3500.
- 379S. Plate II  
Living Animal Cells Photographed at High Power with Ultra Violet Light.  
Malignant Tumor Cells, Mouse Carcinoma x 5000.
- 380S. Plate III  
Living Plant Cells Photographed at High Power with Ultra Violet Light.  
A Simple Single Cell Organism, Gloeocapsa x 5000.
- LUSIEFUG, DR. K. C.  
Shanghai, China
381. Smoking ..... B
- MAC DONALD, PIRIE, HON. F.R.P.S. (Juror)  
New York, New York
382. Edgar Wallace .....  
383. Michael Pesner .....  
384. William Butler Yeats .....  
385. John Masefield .....
- MACHLUP, CECILIE  
Vienna, Austria
386. Die Hausgehilfin .....
- MALAGRINO, CATALDA  
Brooklyn, New York
387. Alarm ..... B
- MALETER, DR. LEWIS  
Budapest, Hungary
388. Children ..... B  
389. In the Sunshine ..... B  
390. The Captain ..... B
- MALY, ADA  
Prague, Czechoslovakia
391. Light and Shadow ..... B
- MARNITZ, FRED  
Budapest, Hungary
392. Idyl ..... B
- MARTIN, E. LEWIS  
Dayton, Ohio
393. Clay ..... CHL
- MASCHIN, JOS. G.  
Vienna, Austria
- 394S. Echinopsis Eyriessi Zucc ..... B  
395S. Selenicereus MacDonaldae Hook ..... B  
396S. Selenicereus nycitalus Lk ..... B
- MASSACHUSETTS INSTITUTE OF TECHNOLOGY  
Cambridge, Massachusetts
- High speed photography by Harold E. Edgerton and Kenneth J. Germerhausen.
- 397S. The Splash of a Drop of Milk—480 exposures per second .  
398S. Water Running from a Faucet—about 1/75,000 second.  
399S. Golf Club Striking a Ball—960 exposures per second.
- MASTER, R. P.  
Bombay, India
400. The Gipsy ..... B
- MATTHEWS, BEN V.  
Winston-Salem, North Carolina
401. Col. W. A. Blair ..... CHL
- MATSUDA, F. M.  
Hollywood, California
402. Reconnoiter ..... B
- MATSUKI, K.  
Seattle, Washington
403. Ebb Tide ..... B
- MATUMOTO, N.  
San Francisco, California
404. Shadow ..... B  
405. Shadow of Lantern ..... B
- MAUTNER, BETTI  
Vienna, Austria
406. The Wanderer ..... B
- MAYODA, TORAZI  
Los Angeles, California
407. Breaking Waves ..... B  
408. Design ..... B  
409. China Design ..... B
- McGILL, EDWARD B.  
Chicago, Illinois
410. Opera Ballet ..... B
- McKISSACK, JAMES  
Glasgow, Scotland
411. Black Smoke .....
- McMURTRY, EDWARD P., A.R.P.S.  
Pasadena, California
412. On the Elbe ..... CB  
413. The Gorge ..... CB  
414. La Rochelle ..... CB  
415. Off Gloucester ..... CHL

- McNALLY, DR. PAUL A., S.J.  
Washington, District of Columbia
- Total Solar Eclipse 1932.  
Georgetown University Total Solar Eclipse Expedition, Fryeburg, Maine—August 31, 1932.
- These transparencies reproduced from the original negatives, by permission of Dr. Paul A. McNally, S.J., Director Georgetown College Observatory, Washington, D. C., through the courtesy of the National Geographic Society.
- 416S. Showing vast extent of coronal light. The pinnacle to the left reaches approximately 1,200,000 miles from the surface of the sun.  
417S. Showing prominences of incandescent hydrogen.
- METTEE, HOLMES I.  
Baltimore, Maryland
- 418C. Electrical Heat Units ..... CHL  
419C. Crystal ..... CHL
- MEYER, PAUL D.  
Evanston, Illinois
420. Goldfish ..... CHL B
- MEYERE, JAN DE  
Stockholm, Sweden
421. Amazons ..... B  
422. Etude D ..... B  
423. A la Garbo ..... B  
424. The Artist Folke ..... B
- MEYERS, WALTER S.  
Rochester, New York
425. "Half Way Down" ..... B
- MILLS, HERBERT, F.R.P.S.  
Bolton, England
426. The Old Harbor—Ostend ..... B
- MISONNE, LEONARD  
Gilly, Belgium
427. Dans la foret ..... O  
428. Les Ornières ..... O  
429. Silhouette ..... O
- MOCK, J. ERNEST, A.R.P.S.  
Rochester, New York
430. Sunshine ..... CHL
- MORELAND, HENRY LEWIS  
Dallas, Texas
- 431C. Oil Separator ..... B
- MORGAN, BYRON  
Rochester, New York
432. The Novitiate ..... CHL
- MORINAGA, Y.  
Seattle, Washington
433. Plegaria ..... B  
434. Raindrops ..... CHL
- MORTENSEN, WILLIAM  
Laguna Beach, California
435. Nicolo Paganini ..... B  
436. Cesare Borgia ..... B  
437. A Flemish Maid ..... B  
438. A Woman of Portugal ..... B
- MORTIMER, F. J., HON. F.R.P.S. (Juror)  
London, England
439. Sforzando ..... CHL  
440. All's Well ..... CHL  
441. The Derelict ..... CHL  
442. A Sea Banquet ..... CHL
- MOUNT WILSON OBSERVATORY  
Pasadena, California
- 443S. Direct photograph of the Sun and, for comparison, the same photographed five minutes later by means of the spectroheliograph, showing the bright and dark clouds of hydrogen.
- 444S. Solar prominence at limb and on disk August 19 and 20, 1927, with normal and disturbed curves of magnetic variation. Showing effect of prominence eruptions on the earth's magnetic field.
- 445S. Two positions of the new planet Pluto on March 22 and 23, 1930.
- 446S. Types of normal and barred spiral nebulae.
- 447S. Types of non-galactic nebulae.
- 448S. Variable stars of the Cepheid type in the spiral nebula, Messier 33, from whose light variations the distance of the nebula is determined.
- 449S. Cluster of very distant spiral nebulae in the Constellation Coma Berenices. Distance is about 50 million light years.
- MUDD, JOHN P.  
Philadelphia, Pennsylvania
- 450C. Lathe Tool and Chip ..... CHL B  
451C. The Giant Heat ..... CHL B
- MULLER, JOHN  
New York, New York
452. Man's Monument ..... CHL B  
453. Mass ..... CHL B

- MURPHY, J. HAROLD  
Worcester, Massachusetts  
454C. A Textile \_\_\_\_\_  
455C. Sprockets \_\_\_\_\_
- MYRON, JOHN  
Kristiansund, N., Norway  
456. A Sign of Spring \_\_\_\_\_ B  
457. A Winter Day \_\_\_\_\_ B
- NALAWALLA, N. J.  
Bombay, India  
458. Dawn of Morning Light \_\_\_\_\_ B
- NENCIONO, GIOSUE  
Arezzo, Italy  
459. Luci Fra Gli Archi \_\_\_\_\_ BO
- NEUNHOFER, LOUIS  
Columbus, Ohio  
460. Fritzie Ziegler \_\_\_\_\_ CHL B  
461. Susan Smith \_\_\_\_\_ CHL B  
462. Age of Innocence \_\_\_\_\_ CHL B
- NEVILLE, RUSSELL T.  
Kewanee, Illinois  
463S. Fountain of Eternity \_\_\_\_\_ B
- NEWBERG, PHILIP  
Hollywood, California  
464. Chela \_\_\_\_\_ CHL
- NELSEN, WILLIAM R.  
Chicago, Illinois  
465. Sentinels \_\_\_\_\_ B  
466. Bow Study \_\_\_\_\_ B
- NISHIYAMA, KIYOSHI  
Tokyo, Japan  
467. Nikko \_\_\_\_\_
- OBERT, KARL  
Santa Barbara, California  
468. Monastery Shadows \_\_\_\_\_ B
- OEHMAN, P. H.  
Cincinnati, Ohio  
469C. Benedictine \_\_\_\_\_ CHL B
- OFFICER, ROBERT A.  
Denver, Colorado  
470. Zest \_\_\_\_\_ CHL  
471. Russita \_\_\_\_\_ CHL  
472. Romance \_\_\_\_\_ CHL  
473. Don Quixote \_\_\_\_\_ CHL
- OGGIANO, RALPH  
New York, New York  
474. A Roman \_\_\_\_\_  
475. Musketeer \_\_\_\_\_
- OLSON, O. W.  
Chicago, Illinois  
476. King \_\_\_\_\_ CHL
- ORNE, HAROLD  
Melrose, Massachusetts  
477. Work of the Winds \_\_\_\_\_ B
- ORTON, W. H.  
Mertola, Portugal  
478. Arida Colina \_\_\_\_\_ CHL B  
479. O Lavrador \_\_\_\_\_ CHL B
- OSCHATZ, WALTER  
Stolp, Germany  
480. Salles ker Dune \_\_\_\_\_ BO TR
- PANYREK, JAROSLAV  
Prague, Czechoslovakia  
481. The Pavement \_\_\_\_\_ B  
482. Over a Dike \_\_\_\_\_ B
- PARK, BERTRAM  
London, England  
483. Miss Rose Brigham \_\_\_\_\_  
484. Torso Study \_\_\_\_\_
- PECSI, JOSEPH  
Budapest, Hungary  
485. Study \_\_\_\_\_ B  
486. Portrait Study \_\_\_\_\_ B  
487C. Still Life \_\_\_\_\_ B
- PEEL, FRED P.  
Chester, Pennsylvania  
488 Mural Section \_\_\_\_\_ B  
489. Vase and the Maud \_\_\_\_\_ B  
490. The Stairway \_\_\_\_\_ B
- PELLEGRINI, GUIDO  
Milano, Italy  
491. Terme di Caracalla \_\_\_\_\_ BO
- PENNEBAKER, JOHN PAUL  
Chicago, Illinois  
492C. Hollywood Approves \_\_\_\_\_ CHL  
493C. Study of Hands \_\_\_\_\_ CHL  
494C. Vassarette Foundations \_\_\_\_\_ CHL  
495C. Radio Program \_\_\_\_\_ CHL
- PERELSTRUS, WILLIAM  
Philadelphia, Pennsylvania  
496S. "Who Me?" \_\_\_\_\_ B
- PETIT, MISS RUTTY D.  
Bombay, India  
497. The Gangster \_\_\_\_\_ B
- POUNDSTONE, DR. GEO. C.  
Chicago, Illinois  
498. To Greener Pastures \_\_\_\_\_ CHL B  
499. San Marco Light \_\_\_\_\_ CHL B
- PRESSER, GUSTAV  
Vienna, Austria  
500. Mutter \_\_\_\_\_ BO TR  
501. Indian Summer \_\_\_\_\_ BO TR

- PRINCEHORN, A. E.  
Oberlin, Ohio  
502C. The Lantern \_\_\_\_\_  
503C. Under Cathedral Roof \_\_\_\_\_
- PRINZ, WILHELM  
Vienna, Austria  
504. Reinemachen \_\_\_\_\_ B
- PUYO, C.  
Paris, France  
505. Etude d'eclairage \_\_\_\_\_ O  
506. Lecture \_\_\_\_\_ O
- QUIGLEY, EDWARD W.  
Philadelphia, Pennsylvania  
507C. Ellipsoid \_\_\_\_\_ B  
508. Translucence \_\_\_\_\_ B
- RABINOVITCH  
New York, New York  
509. Torso No. 1 \_\_\_\_\_ B  
510. Torso No. 10 \_\_\_\_\_ B  
511. Portrait—Marie Ouspenskaya \_\_\_\_\_ B
- RAETH, HUGO  
Chicago, Illinois  
512S. Grass-Hopper in Danger \_\_\_\_\_ B
- RAMHAB, JULES  
Budapest, Hungary  
513. The Happy Mother \_\_\_\_\_ B
- RATNAGAR, F. R., A.R.P.S.  
Bombay, India  
514. The Sunlit Barn \_\_\_\_\_ B
- RAY, EUGENE L.  
Evanston, Illinois  
515. The First Lesson \_\_\_\_\_ CHL
- RAYMOTH, R. R.  
Chicago, Illinois  
516. The Path \_\_\_\_\_ B
- REDMAN, LEE F.  
Detroit, Michigan  
517. Meditation \_\_\_\_\_ B
- REECE, JANE  
Dayton, Ohio  
518. Sculptor's Hands—Lorado Taft \_\_\_\_\_ CA  
519. Sisters Three \_\_\_\_\_ CA
- REISMAN, EMIL  
Philadelphia, Pennsylvania  
520. Composition \_\_\_\_\_ B
- REITER, O. C.  
Pittsburgh, Pennsylvania  
521. The Harbor in Winter \_\_\_\_\_
- REMFELDT, AAGE  
Oslo, Norway  
522. Kitty \_\_\_\_\_  
523. Miss A. A. R. \_\_\_\_\_  
524. Käte Schnitzer \_\_\_\_\_
- REX, RALPH  
St. Louis, Missouri  
525. In the Forest \_\_\_\_\_ CHL B  
526. Victims of the Motor Age \_\_\_\_\_ CHL B
- RICE, RALPH V.  
East Orange, New Jersey  
527. Winter \_\_\_\_\_ CHL
- RITTASE, WILLIAM M.  
Philadelphia, Pennsylvania  
528C. The Circus \_\_\_\_\_ B
- ROBERTS, HOBART V.  
Utica, New York  
529. In the Stillness of the Night \_\_\_\_\_ CHL  
530. A Leap in the Dark \_\_\_\_\_ B
- ROBINSON, M. ARTHUR  
Honolulu, Hawaii  
531C. Hawaiian Sport of Kings \_\_\_\_\_
- ROHAC, VLADIMIR  
Prague, Czechoslovakia  
532. On the Quay \_\_\_\_\_ B  
533. The Playing Cards \_\_\_\_\_ B
- RÖMER, FRITZ  
Hanover, Germany  
534. Winterabend \_\_\_\_\_ B  
535. Gipfelrast \_\_\_\_\_ B
- RONAY, DENES  
Budapest, Hungary  
536. Salome \_\_\_\_\_  
537. Torso \_\_\_\_\_ B
- ROOS, FRANK J., JR.  
Athens, Ohio  
538. Nocturne No. 2 \_\_\_\_\_ B
- ROSENKRANZ, H. J.  
Bloomfield, New Jersey  
539. Looking Aloft \_\_\_\_\_ CHL
- ROSS, C. F.  
Philadelphia, Pennsylvania  
540. Allegheny River \_\_\_\_\_ B  
541. Blast Furnaces \_\_\_\_\_ B  
542. Winter's Make Believe \_\_\_\_\_ B
- ROTAN, THURMAN  
New York, New York  
543. Five Faces \_\_\_\_\_ CHL B

- RUZICKA, DR. D. J.  
Jackson Heights, L. I., New York  
544. A Bridge in Venice.....CHL  
545. Ambition—Chrysler Bldg., N. Y.....CHL  
546. Colonnade, St. Peters, Rome.....CHL  
547. A Fountain in Ulm.....CHL
- RYAN, JOHN JULIUS  
Chicago, Illinois  
548. Lorna Doone.....CHL  
549. Insouciant.....B  
550. As Evening Comes.....B  
551. Wave Song.....B
- ST. CLAIR, RICHARD W.  
Boston, Massachusetts  
552S. Corn Stem—Transverse Section.....CHL  
553S. Sycamore—Transverse Section.....CHL  
554S. Red Wood—Longitudinal Section.....CHL
- SAITO, FRANK B.  
Los Angeles, California  
555. Bonnet with Plumes.....B  
556. Window in the Woods.....B  
557. Tranquillity.....B
- SAMPSON, MRS. M. W.  
Boston, Massachusetts  
558. Soaring.....B
- SARRA, VALENTINO  
Chicago, Illinois  
559C. Illustration for Magazine Cover.....TC CB
- SATO, F. Y., A.R.P.S.  
San Francisco, California  
560. The Nagashi.....B  
561. Still Life.....B
- SAUERBREI, CLAUDE  
Lennoxville, Quebec, Canada  
562. Coco Palms, St. Kitts, B. W. I.....B
- SAUNDERS, DR. L. G.  
Saskatoon, Canada  
563. The Road from the Beach.....BO
- SCHAEFER, ED.  
Detroit, Michigan  
564C. Piston Measurement—Courtesy Olds.....
- SCHEIBNER, FRITZ  
Leipzig, Germany  
565. Morgennebel.....B
- SCHELL, P. G.  
Pittsburgh, Pennsylvania  
566. Stepping Out.....B
- SCHERMERHORN, E. J. G., A.R.P.S.  
Malang, Java, Dutch East Indies  
567. Two Balinese Masks.....BO
- SCHERRER, HERMAN A.  
Indianapolis, Indiana  
568. The Road to Ronco.....BO TR
- SCHEUER, HANS  
Vienna, Austria  
569. Zum Fruhmarkt.....BO TR
- SCHNEIDER, D.  
Oelwein, Iowa  
570. Black Bonnet.....B
- SCHNEIDER, MAURICE  
Brooklyn, New York  
571. The Neopolitan.....CHL B  
572. Profile of a Man.....CHL B
- SCHULZ, HERBERT  
Stettin, Germany  
573. Dächer.....B
- SCOTT, JOHN DUER  
Jersey City, New Jersey  
574. Fuchsia.....TR CB
- SEEHAUSEN, GILBERT B.  
Chicago, Illinois  
575. The White Sister.....B
- SEIDEN, GUSTAV  
Budapest, Hungary  
576. Children.....B  
577. Workers.....B
- SHECKELL, THOS. O.  
New York, New York  
578. Winter Sunshine.....B
- SHEERES, JOHN W.  
Elizabeth, New Jersey  
579. Light Enchantment.....CHL
- SHELDON, HELEN  
New York, New York  
580. The Serbian.....B
- SHIGETA, H. K.  
Chicago, Illinois  
581. Dunes.....B
- SHIGETA-WRIGHT  
Chicago, Illinois  
582C. Vassarette.....B  
583C. Lanchere Soap.....B  
584C. Inland Steel Co.....B
- SHIMONDA, MIDORI A.  
Pasadena, California  
585. A Negro Youth.....
- SHIPPEE, ROBERT  
New York, New York  
586S. Andean High Lights and Shadows.....B

- SHMITH, ATHOL L.  
Melbourne, Australia  
587. Portrait of John.....CHL B
- SHRADER, R. OWEN  
Pasadena, California  
588. Fading Light.....B  
589. Shipshape.....B
- SIEHS, ANNIE  
Vienna, Austria  
590. The Girl with the Bible.....B  
591. Riesenrad.....B
- SIKORA, JOSEPH  
Vienna, Austria  
592. Kokloeschurm.....B
- SILVERSTEIN, SAMUEL J.  
Chicago, Illinois  
593. Two Classical Heads.....B
- SKARA, JOHN  
Chicago, Illinois  
594. Information.....CHL
- SLADE, GEORGE F.  
Chelsea, Massachusetts  
595. Neptune's Playground.....B
- SMITH, KENNETH DUDLEY, A.R.P.S.  
Staten Island, New York  
596. Halycon Days, Bermuda.....B
- SMITH, N. P.  
Toronto, Canada  
597. Disembarking.....CHL B
- SMITH, ROBERT DUDLEY  
Philadelphia, Pennsylvania  
598. Silver Paths.....B
- SMITH, WILLIAM HORACE  
San Francisco, California  
599. Vision Creates.....B  
600. Janet.....B
- SNOW, CHARLES F.  
Boulder, Colorado  
601. Max.....CHL  
602. Mysterious Lady.....CHL
- SONNE, FRED  
Chicago Aerial Survey Co.  
Chicago, Illinois  
603S. Chicago Below.....B
- SORNBERGER, DR. F. F.  
Cortland, New York  
604. Fresh Snow.....CHL B  
605. A Wet Night.....CHL B
- SOUGEZ, EMMANUEL  
Paris, France  
606C. Les Oeufs.....CHL B  
607C. Notre Dame: porte du Xillemesiecle.....CHL B  
608C. Notre Dame: tyman de la Vierge.....CHL B
- SPEEKHOUT, G. J.  
Hengelo, Holland  
609. At Frankfurt.....B  
610. Sparkling Light.....B
- SPENCER, RICHARD GRENVILLE  
Douglaston, New York  
611. Pudeur.....B
- SPIRA, DR. REINHOLD  
Prague, Czechoslovakia  
612. Boot.....B
- SQUIER, P. F.  
Pittsburgh, Pennsylvania  
613. Graceful Arches.....B
- STANDAR, PAUL J.  
Tacoma, Washington  
614. Looking out of a Crovasse.....CHL  
615. Phantom of Speed.....CHL
- STEICHEN, EDWARD J.  
New York, New York  
Courtesy Conde Nast Publications  
616C. George Washington Bridge.....B  
617C. Gerhard Hauptmann.....B  
618C. Front Page.....B  
619C. Fashion Photograph.....B
- STEVENS, CAPTAIN A. W.  
U. S. Army Air Corps  
620S. Long Distance Photograph by Infra-red Light. Mt. Shasta photographed from 23,000 feet elevation and from a distance of 331.2 miles.  
621S. Curvature of the Earth.  
622S. New York from 20,000 Feet Altitude.
- STONE, LOLA  
Lansing, Michigan  
623. Chief.....CHL B  
624. Cairn.....CHL
- STRAWN, MARION L.  
Rockford, Illinois  
625. Force.....
- TAYLOR, WILBUR E.  
Detroit, Michigan  
626. Character Study.....B  
627. Early Morning.....B
- THERSTAPPEN, A.  
Berlin, Germany  
628. Abdichtung.....B



- THOMAS, G. R.  
New York, New York  
629. Fear \_\_\_\_\_ CHL
- THOMAS, LLEWELLYN  
Chicago, Illinois  
630. Dawn \_\_\_\_\_ CHL
- THOREK, DR. MAX, F.R.P.S.  
Chicago, Illinois  
631. Tolstoy's Double \_\_\_\_\_ CHL B  
632. Helba Huara \_\_\_\_\_ CHL B  
633. His Big Moment \_\_\_\_\_ CHL B
- TILL, WILL, A.R.P.S.  
Johannesburg, South Africa  
634. The Mirror \_\_\_\_\_ B
- TIMM, HEINZ  
Chicago, Illinois  
635. Cycle of Life \_\_\_\_\_ CHL B
- TOLAND, GREGG  
Los Angeles, California  
636. Study of Ann Christy \_\_\_\_\_ B
- TOLOFF, JOSEPH D., A.R.P.S.  
Evanston, Illinois  
637. Three Score and Ten \_\_\_\_\_ CHL
- TOMLINSON, ARTHUR M.  
Chicago, Illinois  
638. Old Havana \_\_\_\_\_ CHL
- TOWNSEND, ALVA C.  
Lincoln, Nebraska  
639. Portrait \_\_\_\_\_ CHL
- TROWBRIDGE, R. W.  
Chicago, Illinois  
640C. University of Chicago Cathedral \_\_\_\_\_ CHL
- TUCKERMAN, F. M., A.R.P.S.  
Chicago, Illinois  
641. At the Mirror \_\_\_\_\_ B
- UNDERWOOD & UNDERWOOD, INC.  
Chicago, Illinois  
642C. Green Pastures \_\_\_\_\_ CHL  
Courtesy Young & Rubicam  
643C. Atomizer \_\_\_\_\_ CHL  
Courtesy De Vilbiss Company
- UNGER, PAUL  
Berlin, Germany  
644S. Schleierfische \_\_\_\_\_ B  
645S. Teleskop—Fisch \_\_\_\_\_ B  
646S. Ueberfall \_\_\_\_\_ B
- UNWALLA, J. N., A.R.P.S.  
Bombay, India  
647. My Mother \_\_\_\_\_ B
- VADAS, ERNÖ  
Budapest, Hungary  
648. Honest Tears \_\_\_\_\_ B  
649. Vestibule \_\_\_\_\_ B  
650. Water Rings \_\_\_\_\_ B
- VANDAMM, FLORENCE, F.R.P.S.  
New York, New York  
651. Alla Nazimova in "The Good Earth" \_\_\_\_\_ CHL  
652. In the Spotlight \_\_\_\_\_ CHL
- VAN KEUREN, VALENTINE  
New York, New York  
653S. Snow Capped Andes \_\_\_\_\_ B
- VINETTE, LYNTON  
Hollywood, California  
654. Miss June Vlassek \_\_\_\_\_ B
- VON BERNAUER, CARL  
Chicago, Illinois  
655. Josef Chestmir Svoboda \_\_\_\_\_ CHL B
- VON COLL, CURT  
Graz, Austria  
656. Das Fenster \_\_\_\_\_ B
- VOS, MARTIN  
New York, New York  
657. Snow Scene \_\_\_\_\_ G  
658. Muriel \_\_\_\_\_ B  
659. Dancer \_\_\_\_\_ B
- WAGNER, HERMANN  
Frankfurt, Germany  
660. Morgen in der Frankfurt \_\_\_\_\_  
661. Fur Schwimmbad \_\_\_\_\_
- WALLACE, BOB  
Los Angeles, California  
662. Fleets \_\_\_\_\_ CHL  
663. Darkie \_\_\_\_\_ CHL  
664. Alsboi De Sibo \_\_\_\_\_ CHL
- WALSH, MARY RUTH  
Cambridge, Massachusetts  
665. The Path of Light \_\_\_\_\_ BO  
666. The Surf View \_\_\_\_\_ BO
- WATANABE, YOSHIO  
Tokyo, Japan  
667. Pose \_\_\_\_\_
- WEBB, TRACY  
Sacramento, California  
668. Rhythm \_\_\_\_\_ CHL B
- WEBER, ALFONS, F.R.P.S.  
Chicago, Illinois  
669. Fishes \_\_\_\_\_ CHL B  
670. Daily News Plaza \_\_\_\_\_ CHL B
- WEBER, JOHN WILLIAM  
Chicago, Illinois  
671S. Timber Rattlesnake \_\_\_\_\_ B  
672S. Blueracer \_\_\_\_\_ B

- WEITTENHILLER, ARNULF V.  
Graz, Austria  
673. Der Grosse Schirm \_\_\_\_\_ B
- WEST, W. C.  
Chicago, Illinois  
674. Snow \_\_\_\_\_ CHL
- WEYBORA, ANTON  
Vienna, Austria  
675. Reflexe \_\_\_\_\_ G
- WHITE, CLARENCE H.  
New York, New York  
676. Dancers \_\_\_\_\_ P  
677. The Kiss \_\_\_\_\_ P  
678. Orchard \_\_\_\_\_ P  
678. The Old Ohio Canal \_\_\_\_\_ P
- WHITTINGTON, DICK  
Los Angeles, California  
679C. Step on 'er, Dad \_\_\_\_\_
- WICHURA-GUETHHOFF  
Chicago, Illinois  
680. Portrait \_\_\_\_\_ CHL B
- WIDDIFIELD, REV. JAS. G.  
Detroit, Michigan  
681. A Man of Sorrow \_\_\_\_\_ CHL B
- WIGHTMAN, DR. E. P., F.R.P.S. (Juror)  
Rochester, New York  
682. Rushes \_\_\_\_\_ CHL B  
683. "Crow's Nest of Civilization" \_\_\_\_\_ CHL B  
684. Arthur \_\_\_\_\_ CHL B  
685. Alexander Leventon \_\_\_\_\_ CHL B
- WIGSTON, NIGEL S.  
Denver, Colo.  
686. Spools—Gates Rubber Co. \_\_\_\_\_ CHL
- WILDING, DOROTHY  
London, England  
687. Poise \_\_\_\_\_ CHL  
688. Spencer Watson, Esq. \_\_\_\_\_ CHL
- WILKING, REINHOLD  
Kaiserslautern, Germany  
689. Enge Gasse \_\_\_\_\_
- WILLIAMS, KENNETH WILSON  
Rochester, New York  
690. "—and 10 above" \_\_\_\_\_ B
- WILSON, OTTO  
Waterloo, Nebraska  
691. Snow Bordered \_\_\_\_\_ CHL B
- WINTER, WILLIAM F.  
Schenectady, New York  
692. Stairway, Whitney Museum of American Art \_\_\_\_\_ B
- WOBBE, HARVE B.  
East Orange, New Jersey  
693. Sumner \_\_\_\_\_ B
- WOLFF, RAPHAEL G.  
Chicago, Illinois  
694C. Budweiser Malt \_\_\_\_\_ CHL B  
Courtesy—Anheuser-Busch  
695C. Stitches \_\_\_\_\_ CHL B  
Courtesy—Kester Solder Co.
- WRIGHT, DR. HARRY  
Philadelphia, Pennsylvania  
696. Drama \_\_\_\_\_ B  
697. A Life is Saved \_\_\_\_\_ B  
698. Rhythm \_\_\_\_\_ B
- WU, CHUNG HSIN  
Shanghai, China  
699. Cock o' the Morn \_\_\_\_\_ B
- YATES, WM. O.  
Erie, Pennsylvania  
700. Marshland Frolic \_\_\_\_\_ CHL B  
701. Receding Waters \_\_\_\_\_ CHL B
- YERKES OBSERVATORY, UNIVERSITY OF CHICAGO  
Williams Bay, Wisconsin  
702S. Halley's Comet \_\_\_\_\_  
703S. Jupiter \_\_\_\_\_  
704S. Great Spiral Nebula in Andromeda \_\_\_\_\_  
705S. Pleiades \_\_\_\_\_  
706S. Nebula in Sagittarius \_\_\_\_\_  
707S. Milky Way in Sagittarius \_\_\_\_\_  
708S. Moon, Age 12 Days \_\_\_\_\_  
709S. Direct Photograph of Sun with Large and Small Spots \_\_\_\_\_  
710S. Solar Prominence Aug. 6, 1931 \_\_\_\_\_  
711S. Mars, Showing Rotation \_\_\_\_\_
- YGINUMA, R. M.  
Los Angeles, California  
712. Repose \_\_\_\_\_ B  
713. Still Life \_\_\_\_\_ B  
714. Freezing Snow \_\_\_\_\_ B
- ZLAMAL, VLADIMIR  
Prague, Czechoslovakia  
715. Return Home \_\_\_\_\_ B  
716. The Cross-Jump \_\_\_\_\_ B
- ZMATLIK, Y. A.  
Prague, Czechoslovakia  
717. Tune of Winter on the Moldau \_\_\_\_\_
- ZOBEL, JOHANNES  
Zwickau, Germany  
718. Rauhreif \_\_\_\_\_ B
- ZUNSER, RALPH  
New York, New York  
719. Day Dreaming \_\_\_\_\_ CHL B

## HISTORICAL SECTION

LOANED BY EASTMAN KODAK COMPANY  
Rochester, New York

720. The Inventors of Photography \_\_\_\_\_

LOANED BY THE SMITHSONIAN INSTITUTE  
Washington, District of Columbia

Early photographic prints by  
HILL, DAVID OCTAVIUS, about 1848

721. Woman's Portrait \_\_\_\_\_

722. Principal Haldane \_\_\_\_\_

CAMERON, MRS. JULIA MARGARET

723. Herschel \_\_\_\_\_

724. Carlyle \_\_\_\_\_

TALBOT, FOX, about 1850

725. Glass Lacock Abbey \_\_\_\_\_

726. The Gate, Christ Church, Oxford,  
England \_\_\_\_\_

EICKEMEYER, RUDOLF, about 1900

727. After the Rain \_\_\_\_\_

728. When the Daylight Dies \_\_\_\_\_

LOANED BY MR. LEO STEFFENS  
Chicago, Illinois

729. A cabinet containing a collection of early daguerreotypes, ambrotypes and tintypes. An interesting portion of this exhibit consists of several daguerreotypes and a modern miniature made by Mr. Steffens.

*The following prints were accepted by the jury and omitted from alphabetical list through error:*

BAUMGAERTEL, KARL A.  
San Francisco, California

730. The Quest \_\_\_\_\_ CHL

731. A Champion Serves \_\_\_\_\_ B

BYRON COMPANY  
New York, New York

732. Smoking Salon, S. S. "Monarch of  
Bermuda" \_\_\_\_\_

CALLAGHAN, MARY  
New York, New York

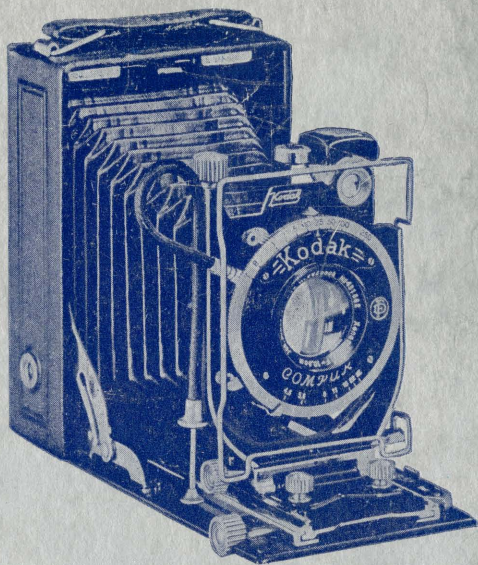
733. The Landing \_\_\_\_\_ B

734. Glass Jar \_\_\_\_\_ B

DAVIES, C. CECIL, A.R.P.S.  
Gillingham, England

735. The End of a Good Run \_\_\_\_\_ B

*Built with  
hair-line  
precision*



*Kodak Recomar 18 (2¼" x 3¼") costs \$40; Kodak Recomar 33 (3¼" x 4¼"), \$48. Prices include three single plate holders with film sheaths, one film pack adapter, cable release and exposure table. Supplementary lenses, each \$3.50.*

# KODAK RECOMARS 18 and 33

ADAPTABLE TO FILM PACKS, CUT FILM, AND PLATES

**S**UPERB is the word for these cameras. Superb in construction... in operation... in results. Unquestionably the world's finest cameras of their type.

Recomars 18 and 33 are equipped with Schneider Xenar *f*.4.5 lens, and Compur shutter with eight speeds—from 1 to 1/250 on the "18"; to 1/200 on the "33." The shutter has a built-in self timer. Recomar usefulness is enhanced by double-extension bellows and bed. Wide-angle and telephoto lenses are available.

Both a wire frame direct view finder and a brilliant reflecting finder with spirit level

are supplied. Focusing is with scale and micrometer screw, or ground glass back.

### *Recomars Use the New Fast Film*

Adaptable to film packs, cut film, and plates, they invite the use of a wide variety of color-sensitive and speed emulsions, including the new Kodak Super Sensitive Panchromatic Film Packs.

Kodak Recomar 18 takes 2¼ x 3¼ in. film packs, 6½ x 9 cm. plates, or 2½ x 3½ in. cut film, costs \$40; "33" takes 3¼ x 4¼ in. or 9 x 12 cm. film packs, 9 x 12 cm. plates or cut film, sells for \$48.

*If it isn't an Eastman, it isn't a Kodak*

**EASTMAN KODAK COMPANY, Rochester, N. Y.**