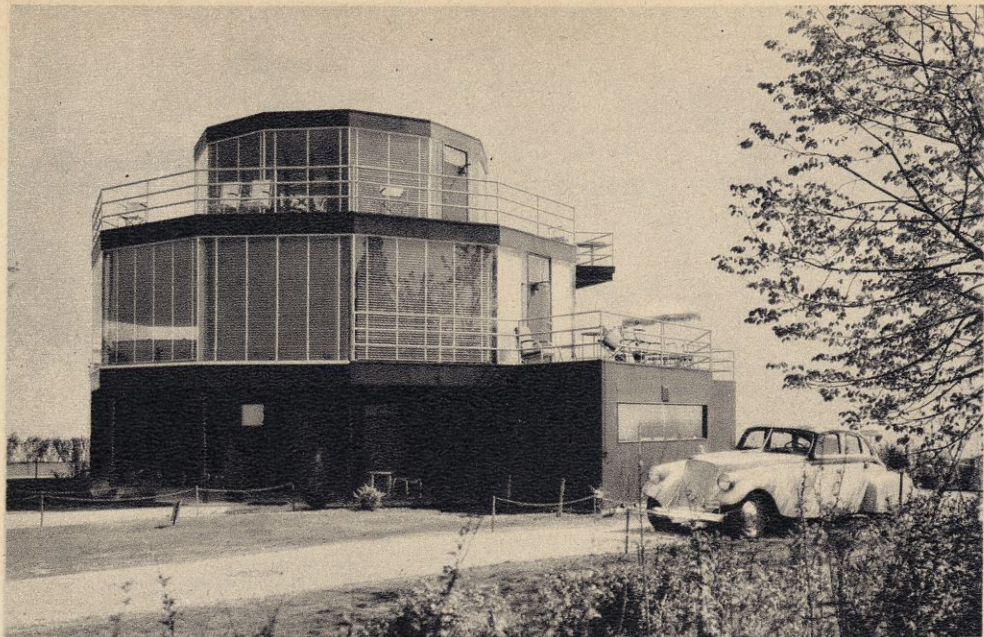


27

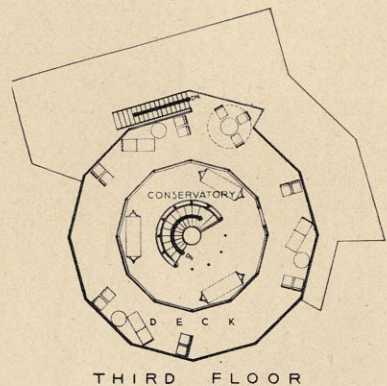
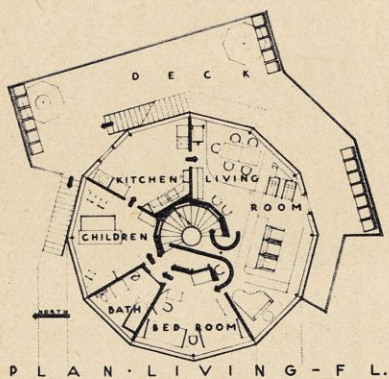
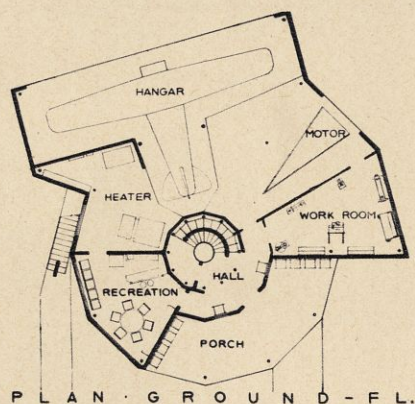
HOUSE OF TOMORROW





Elevation from Southwest

Right and Below—Floor plans of the "HOUSE OF TOMORROW" at A Century of Progress Exposition in Chicago, 1933.



HOUSE OF TOMORROW

AMERICA'S FIRST GLASS HOUSE

Owner:
Century Homes, Inc., 612 North Michigan Avenue, Chicago

Architect:
George Fred Keck, Chicago

Interior and Furniture:
Designed by Leland Atwood, Chicago

Interior Consultant:
the late Mrs. Irene K. Hyman, Chicago

the house . . .

this house of tomorrow is an exhibition house. it was designed to demonstrate mechanical equipment and new building materials that are now on the market. the house of tomorrow is an efficiently designed house. the chief concern of the architect was not to give a specific form to his building, but rather to find a solution to the many and varied new requirements of a residence in a simple and direct manner. the causes were considered first, the effects later. he started from the inside and worked out.

there are available air-conditioning systems that automatically keep the air within buildings fresh, odorless, dustless and of a constant temperature and humidity at all times and in all seasons. in the near future it is reasonable to suppose that all buildings in which people live and work will have such systems. air-conditioning units will be considered as necessary as central-heating and bathrooms are today. the house is designed around an air-conditioning system.

an air-conditioning system works most efficiently when operated within a closed space, when its balance of air output and intake is not disturbed, as by open windows and doors. glass is obtainable in such large sizes that, with the use of standard store-front construction and a steel frame to carry floor and

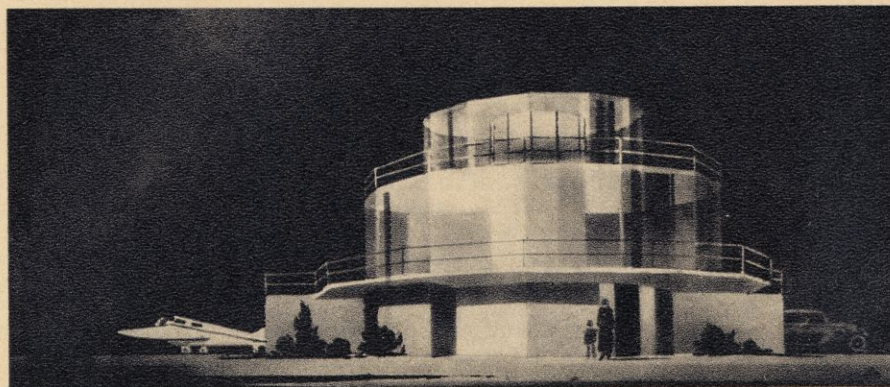


▶ An octagon house, built in Watertown, Wisconsin, in 1853. This type of house, with the rectangular expression of ideas incorporated in it is common to the North-west territory area of the middle west. If the inventive spirit and direct expression as exemplified in this house, built in the middle of the last century had been carried on, we should have escaped the inanities of the post-Civil War period and the first thirty years of this present century. We might now have an architectural technique comparable to the technical development in our industries.

This octagon house has brick walls and a central circular staircase which extends forty feet above grade to the cupola. Rainwater is collected in a tank, under the cupola by the pitch of the roof toward the center. Formerly a two story porch extended entirely around the house, but this has since been removed.



▶ Architects' sketch for the House of Tomorrow



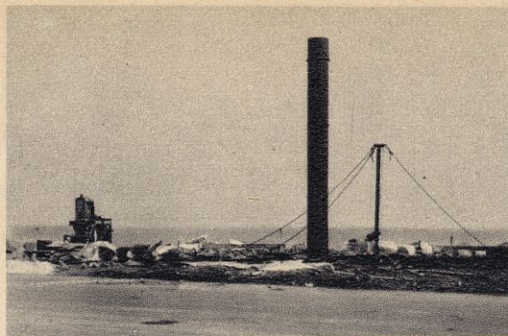
roof loads, it is possible to use it as walls, thus doing away with windows and their attendant expense of upkeep and other inefficiencies. by using venetian blinds, roller shades and curtains, these last of almost numberless materials, the light through these glass walls can be controlled from absolute darkness to as full light as nature affords.

the house is built on a steel frame. delicately slender columns carry the steel beams, fibre-concrete covered joists and fibre-concrete floor slabs. in many portions of the house the frame-work is left exposed, notably in the central portion around the stair and in the solarium on the top floor. this may appear strange at first glance. tomorrow we will be accustomed to it and will know it to be as right and proper and beautiful as we now consider elizabethan exposed half-timbers and ceiling beams of wood.

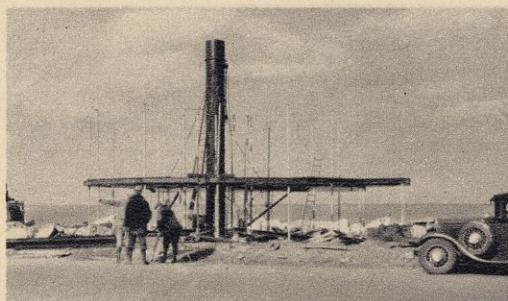
the plan of the house is as unusual as it is logical. the utilities, the heat and cold ducts, vents, stack, water-supply pipes and stairs are located in the central portion of the house and the rooms radiate from this central portion. all the living rooms are outside; only the services are inside. the stair in this central portion is equipped with indirect integral lighting. the plan is very flexible, as can be judged by referring to the first floor plan. notice that the work-room and the garage extend out beyond the volume of the second floor and that the airplane hangar extends out even farther. the third or sun-deck floor can be enlarged and additional bedrooms and bathrooms located there. complete new floors could be added above as nothing below would be disturbed. the roof over the projected areas is covered with a waterproof compressed asphalt board and serves as a terrace.

the house is nearly circular in shape, a duodecagon more exactly. this shape was not selected arbitrarily but resulted from the number and sizes of the rooms required on the different floors and from the fact that the glass walls on each of these twelve sides would be of a size that could be installed efficiently. had this house been smaller or larger the number of sides would accordingly have been decreased or increased.

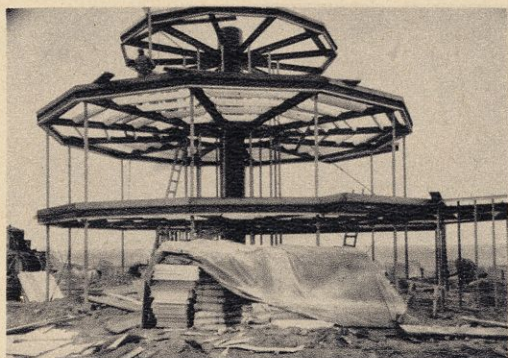
the foundation of the house is of concrete; this and the fibre-concrete floor slabs, it is interesting to note, are the only "damp" construction in the house. all other construction is "dry." the fibre-concrete covered steel joists are pre-fabricated and are set in place. there is no plaster. synthetic wall boards that are nailed or otherwise secured in place and lacquered or finished as desired are used



Central stack housing utilities



Steel framework, columns and floor beams in process of erecting



Steel framework complete, fibre-concrete floor joists being placed



Steel and concrete work finished

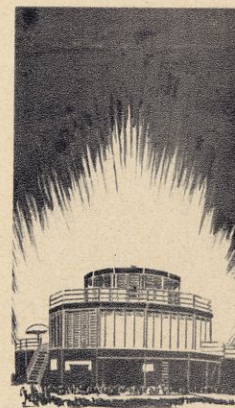
instead. colored and polished plate glass is used on the walls of the living room and the bathroom.

there are no bearing walls or partitions in the house. the steel frame carries all loads. the exterior walls on the first floor are of phenoloid board on the outside and plaster-board on the inside. the insulation is of paper, coated with a bright aluminum foil that reflects heat as a mirror reflects light. the partitions on the first floor between the garage and work-room are of metal-covered insulation board.

the artificial lighting is done almost entirely with portable and adjustable lamps. the metal base in all the rooms is well supplied with base-plugs. dimmers are wired into the lighting circuits on each floor to enable control of light intensity. the illumination in the master bedroom is done by means of colored light-filters which produce a quiet restful light of low intensity and high efficiency.

the garage and hangar doors both are electrically operated and fold up onto the ceiling, thus occupying no floor space when open. the door to the entrance hall closet is a collapsible door that folds toward the side jamb thus occupying little room when open.

the floors are of rubber tile, end-grain block wood, wood and concrete, each flooring material used where it serves its purpose best. the last idea would seem to be the real idea of the house, to use materials and space to best advantage.



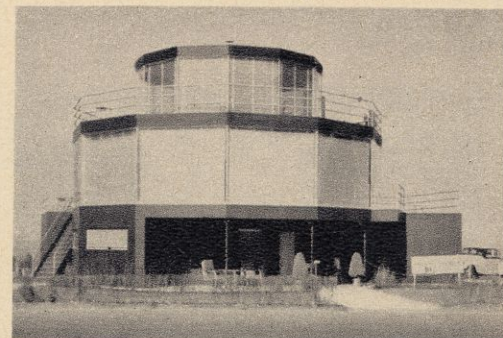
The photographs on these two pages were taken of the "HOUSE OF TOMORROW" built at a Century of Progress Exposition in Chicago, 1933.



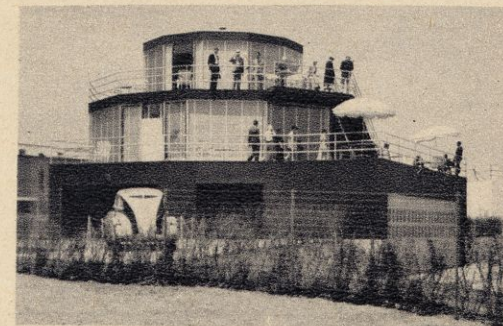
Glazing and installing partitions



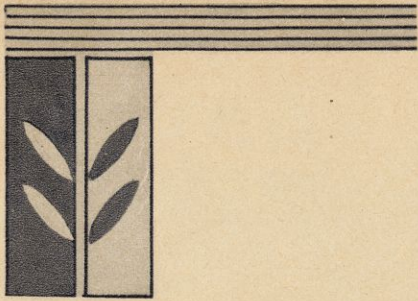
Setting interior glass walls



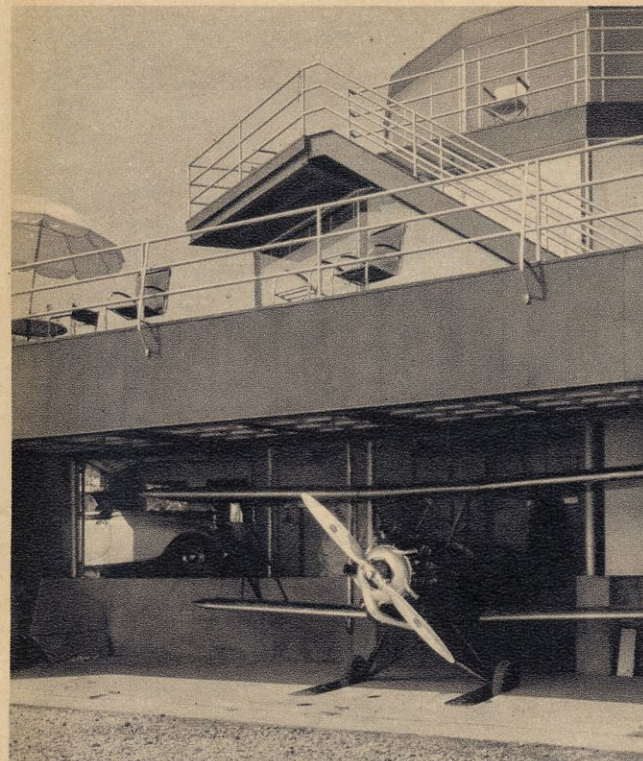
House complete except furnishing



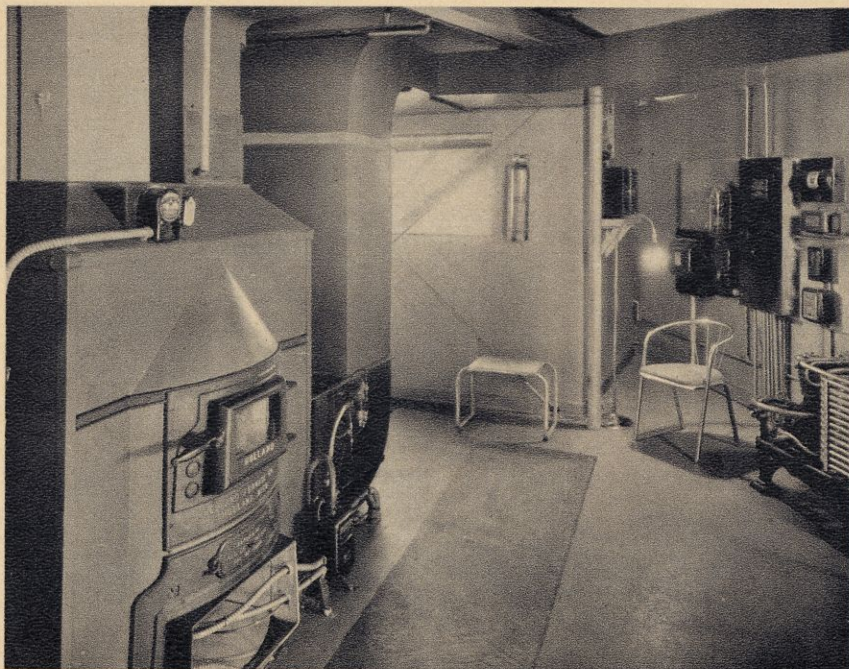
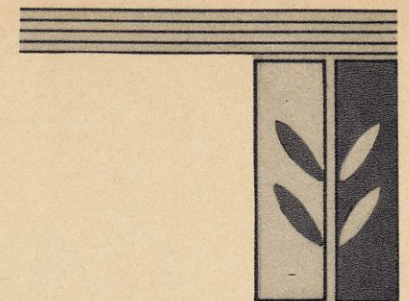
House complete



The Recreation Room. Exposed ceiling construction painted bright blue. The metal ducts in different spectrum colors. Walls dead white. The floor is bright blue rubber tile. The bar is painted white, except the bar-top which is mahogany stained red and highly polished. The bar rail is of brass, all other metal work is chromium. A large case (a corner is shown reflected in the bar mirror) is equipped to house sports equipment, clothing, golf-clubs, tennis-rackets, etc.; it is also equipped with a radio. The card table is of chromium plated steel and has a glass top over green felt. The chairs are of chromium plated steel tubing and have black cane seats and backs. The bar stools are of chromium. The refrigerator is in black enamel and is mounted on wheels.



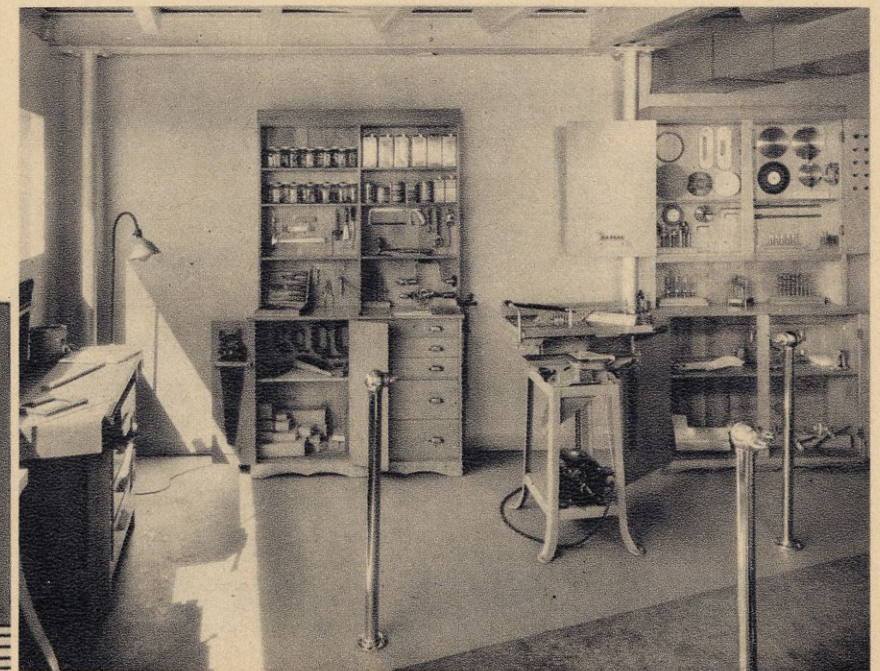
View through hangar door showing airplane in place. The car is shown partly driven into the garage space.



The Air-conditioning Plant. Here all construction is left exposed and painted. The ceiling and walls painted with aluminum paint, the ducts in primary colors.



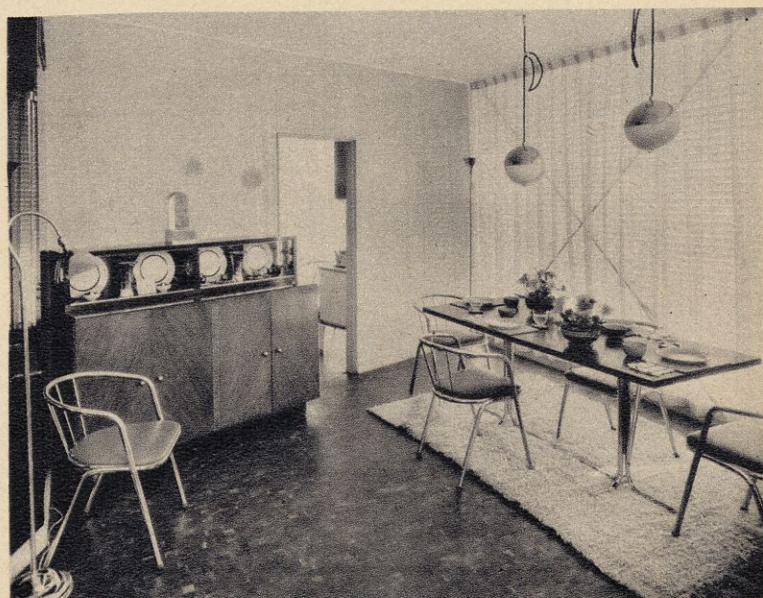
The Workshop. All construction has been left exposed in this room. Walls and ceiling are painted with aluminum paint to serve as a contrast to the orange painted concrete floor. The shop is completely equipped for woodworking.





Living Room. Floor of end-grain walnut blocks. Walls are painted a pale soft grey. The curtains are of tan voile over silver Venetian blinds. The long table is of Macassar ebony, the top is of one piece of veneer. The overstuffed chairs are covered in pink-beige leather. The rug is white and brown. The piano is finished in ebony and has chromium and glass legs. The table lamps are of chromium and have white parchment shades. The color scheme of this room was adapted from the painting shown at the far end of the room.

Dining portion of the Living Room. Floor of end-grain black-walnut. Walls of black and grey plate glass. Light tan voile curtains over silver Venetian blinds. Sideboard of walnut and black lacquer. The dining tables have Hungarian ash tops and chromium plated legs and are so arranged that they can be unfastened and used separately as card-tables, etc. The chairs are of chromium plated steel tubing and have light-blue leather seats. The rug is of white wood, hand woven in Morocco. The hanging light fixtures are simple spheres, with chromium top and etched opal glass bottom. Platinum and grey china is shown in the sideboard. The sculpture on the sideboard is in glass. The table appointments are of papier-mache and pressed cork.



the interior and furniture

it is incorrect to treat the interior, in this brochure, as separate from the exterior, as this house of tomorrow is so completely a whole, the decorating and the furnishing being but a completing of the house. the architectural impression of the undecorated and unfurnished interior was one of space and freedom, and the real problem in the decorating was to preserve this impression. this was done by the arrangement of the furniture, by the use of great transparent curtains, preserving and softening the effect of the venetian blinds at the glass walls throughout the living rooms and by the use of a color scheme light in tone.

furniture was designed especially for the house of tomorrow. the concern of the designer was not to have pieces that would stand out but rather to have the individual pieces take a definite part in, be subservient to, the decorative scheme as a whole. if any of the pieces do "stand out" it is not due to their shape or form, but rather to the materials in them. the materials are rare and exotic woods, superbly finished, brilliant, polished metal and luxurious fabrics.

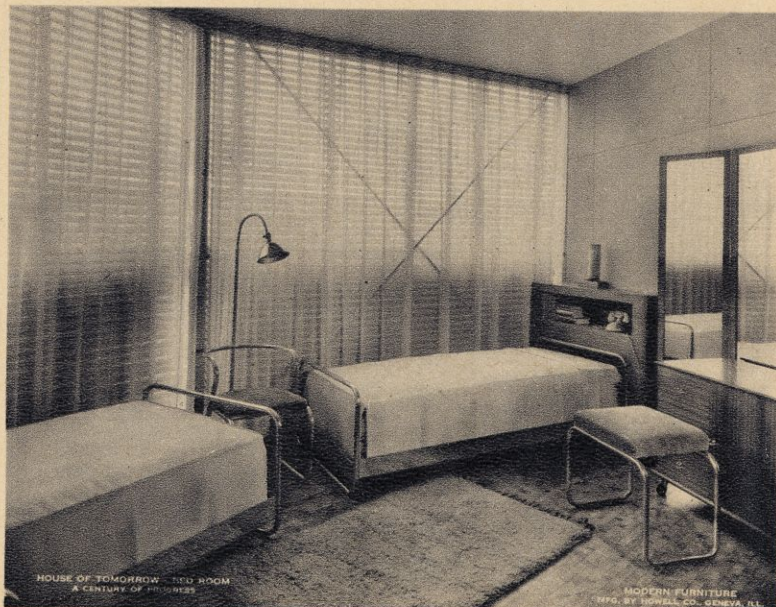
in arranging the furniture to preserve the openness of the plan the large pieces were placed against walls. there are two notable exceptions, one in the nursery and one in the living room. the large pylon bed in the nursery was placed directly on the center line of the room, thus dividing the room into two semi-private spaces. in the living room the line of the furniture arrangement of the living portion meets the line of the dining portion at right angles. at this right angle there is placed a large triangular table with a bending shelf that rises high into the room. this table serves to stop these two lines and unite them. the table further unites these two portions of the room, as it is constructed of the two principal materials of these portions, wood being the principal material of the furniture of the living area and metal of the dining area.

the individual pieces of furniture are connected through the color scheme. by using few colors, no decoration as such and large clear unpatterned surfaces



▶ Kitchen. Metal cabinets finished in sand colored enamel, the walls are painted to match. The floor is deep brown rubber tile.

Master Bedroom. The walls are painted a pale warm pink. The floor is of end-grain block pine. The furniture (except the beds) is of rosewood in a natural finish. The beds are of chromium plated steel. Curtains are of voile over silver Venetian blinds. The bedspreads are a pale caramel colored fabric and chair seats are of corduroy in a deeper caramel. The hand-woven Moroccan rug is tawny yellow. The color-filtre lighting is yellow. The dressing table is mounted on wheels and is easily moved about in front of the full length triplicate mirror. The furniture knobs are of glass. ◀



HOUSE OF TOMORROW. BED ROOM
A CENTURY OF PROGRESS

MODERN FURNITURE
1970 BY HOWELL CO., GENEVA, ILL.

the interior is kept quiet and restful. all the rooms on the living floor are further unified by the curtains at the exterior glass walls. these curtains, which can completely cover the glass seem to run from one room into another, thus giving another effect of space in the house. the curtains run on an ingeniously contrived track fastened directly on the ceiling.

all the trim of the house is of metal; the door jambs, the glass wall frames, the base. the doors are metal covered.

the use of glass in the interior deserves mention. in the living room the inside walls are of colored and polished plate glass. The wall around the stairway is of black glass which reflects a particularly fine image, which relieves a tightness at this point that might otherwise exist. the wall toward the kitchen is of a soft-grey glass. glass is used for legs on a very neatly and skillfully designed grand piano. the walls of the bathroom are of pure white plate glass. these glass walls catch and reflect the pink in the rubber tiled floor, giving a very pleasant and soft color effect. the shower screen is of clear plate glass.

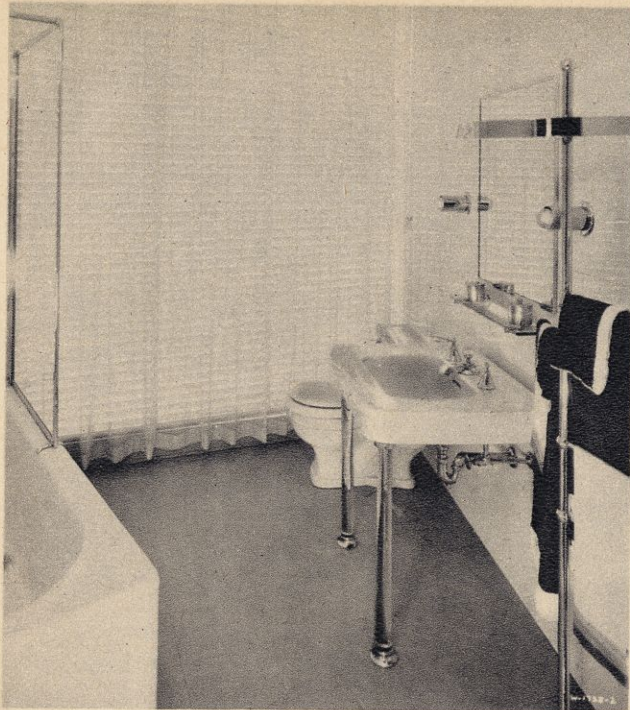
in the master bedroom the flooring of end-grain block pine is run directly off the floor up the narrow wall of the room. the effect is of enlarging this wall and it serves, too, as a fine background for the tall rosewood cedar-lined wardrobe.

there are no closets as such in this house. movable wardrobes to hold clothing and large cases for storage are supplied. in the nursery there is one great case into which an aquarium has been built. this aquarium houses an under-water garden and tropical fish and should prove instructive and amusing to children and to adults also.

the kitchen is a complete electrical kitchen, which is large enough to have breakfast table, on which occasional quick meals can be served.

this, then, is the house of tomorrow. it is a "functional" house, in which every member plays an important part of the whole.

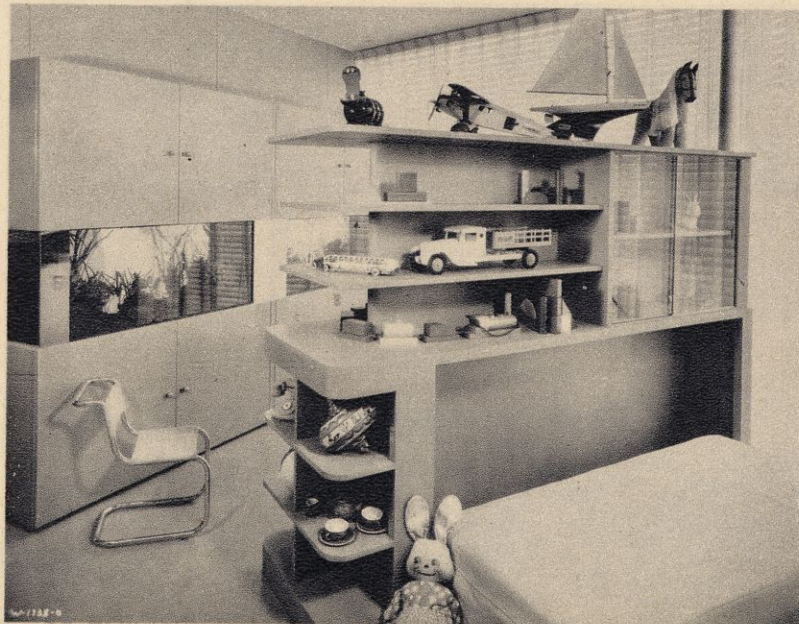




The Bathroom. The walls are of pure white glass, white glass encloses the tub. The floor is of pink rubber tile. The shower enclosure is of clear plate glass. The towel and hanger rack is of chromium plated steel. Curtains are the same as in other living rooms.



The Children's Room. The walls and furniture are painted a pure turquoise. The floor is of a slightly deeper tone of green rubber tile. A pylon houses pullman beds, shelves and a glass-fronted case for toys. Furniture is built to child's size. Metal chairs have bright yellow canvas seats and backs. A small wardrobe (not shown) is equipped with hanger rods, drawers and all equipment exactly as if it were for an adult. The large storage case holds an aquarium with an underwater garden and tropical fish.



CO-EXHIBITORS IN THE "HOUSE OF TOMORROW"

Under the direction of Ralph U. Nichols

STRUCTURAL FEATURES

Structural Steel	Henry Pratt Co., Chicago
Crex Patent Columns	Crex Patent Column Co., Chicago
Floor Construction	United States Gypsum Co., Chicago
Air Conditioning System	Holland Furnace Co., Holland, Mich.
Window Glass	Libbey-Owens-Ford Glass Co., Toledo, Ohio
Carrara Glass (colored wall glass)	Pittsburgh Plate Glass Co., Pittsburgh, Pa.
Alumilited Aluminum Sash	The Zouri Co., Chicago
Master Metal Insulation	Reynolds Metals Co., Inc., Chicago
Metal Partition (work-room) and Doors	Met-L-Wood Corp., Chicago
Metal Trim and Metal Wir-Way Base	Knapp Bros. Mfg. Co., Chicago
Asphalt Plank Terrace Flooring	Servicised Products Corp., Chicago
Rubber Tile Flooring	Installed by Jacobson Roofing Co., Chicago Goodyear Tire & Rubber Co., Akron, Ohio
Flooring & Inner Wall (Master Bedroom)	Installed by E. E. Davis Co., Chicago Osgood-Corson-Ratcliff Co., Chicago
Flooring (Living Room) in Walnut	Material by Dierkes Lumber & Coal Co., Kansas City, Mo. Osgood-Corson-Ratcliff Co., Chicago
"Loxit" Wood Flooring (Solarium)	Material by American Walnut Mfrs. Assn., Chicago Knapp Bros. Mfg. Co., Chicago
Hanger and Garage Doors	Overhead Door Corp., Hartford City, Ind.
Lacquers	Pyroxylin Products, Inc., Chicago
"Valdura" Asphalt Aluminum Paint	American Asphalt Paint Co., Chicago
Concealed Lighting and Flood Lighting	Curtis Lighting Co., Chicago
Folding Doors	Folding Products Corp., Chicago
Finished Hardware	Sargent & Co., Chicago

FURNISHING AND EQUIPMENT

Metal Tubular Furniture	W. H. Howell Co., Geneva, Ill.
Wood Furniture	Tapp, DeWilde & Wallace, Inc., Chicago
Venetian Blinds	Hough Shade Co., Janesville, Wis.
Window Shades	The Western Shade Cloth Co., Chicago
Drapery Hardware	Kirsch Company, Sturgis, Mich.
Curtains & Counterpanes (Celanese Corp.)	Marshall Field & Co., Chicago
Lamps	Cooper, McGurk & Stewart, Inc., Chicago
Rugs	Ruth Brooks, Chicago
Ozite Rug Cushion	Clinton Carpet Co., Chicago
Starck Piano	P. A. Starck Piano Co., Chicago
Majestic Radios (exclusively)	Grigsby-Grunow Co., Chicago
Oil Painting in Living Room	Flora Schofield, 460 Barry Ave., Chicago
Pickard China	Marshall Field & Co., Chicago
Dining Table Appointments and the Glass Sculpture	Helen Hughes Dulany, 936 Lake Shore Dr., Chicago
Decorative sculptures in Living Room and Child's Room	Miss Marianne Willisch, Austrian Werkbund, Chicago
Wardrobe (Cedar Interior)	The Lane Co., Inc., Altavista, Va.
Oil Painting in Master Bedroom	Rudolph Weisenborn, 1007 Rush St., Chicago
Color Filter Illumination (Master Bedroom)	Beatrice Irwin, 218 E. Huron St., Chicago
Bathroom Fixtures	Crane Company, Chicago
Shower Sprayshield	Lehman Sprayshield Co., Philadelphia, Pa.
Bathroom Accessories	Hoegger, Inc., Weehawken, N. J.
Kitchen Cabinets	Elgin Stove & Oven Co., Elgin, Ill.
Hot-Point Range	General Electric Co., Cleveland, Ohio
Refrigerator in Kitchen	General Electric Co., Cleveland, Ohio
Electric Dishwasher	General Electric Co., Cleveland, Ohio
Monel Metal Counters	International Nickel Co., New York, N. Y.
Grant Cordless Electric Iron	Safety Electrical Appliances, Inc., Detroit, Mich.
Sunbeam Mixmaster	Chicago Flexible Shaft Co., Chicago
Cooking Utensils	Polar Ware Company, Chicago
Refrigerator in Recreation Room	Gibson Refrigerator Corp., Greenville, Mich.
Chromium Accessories	Chase Brass & Copper Co., Chicago
Tropical Fish and Underwater Garden	Mary L. Jannotta & Charles F. Leach, Chicago
Equipment and Tools (Work Room)	Delta Manufacturing Co., Milwaukee, Wis.
Silver Arrow Automobile	Pierce Arrow Sales Co., Chicago
Curtiss-Wright Sport Biplane	Curtiss-Wright Airplane Co., Robertson, Mo.

