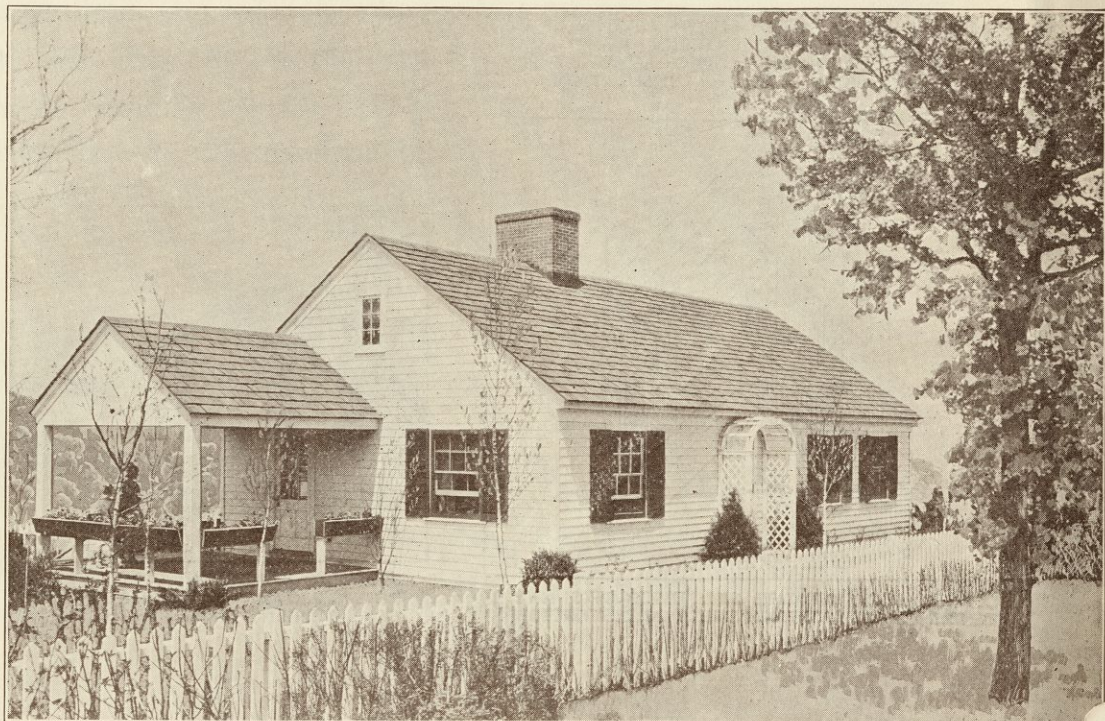


CROSSETT PRESENTS . . .
THE CAPE COD COTTAGE

CENTURY
of PROGRESS
EXPOSITION
CHICAGO
1933



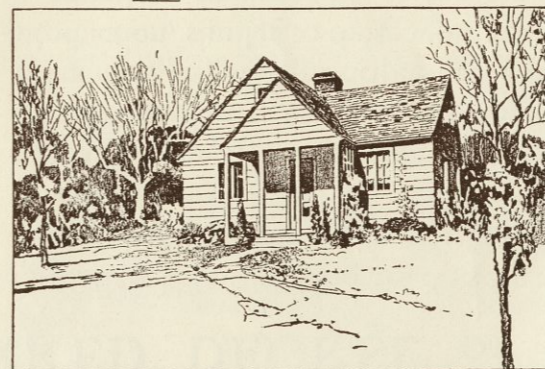
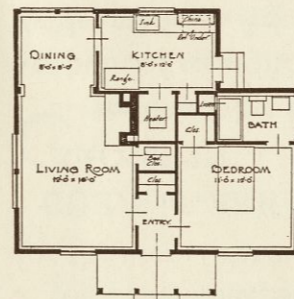


IN RESPONDING to that most natural impulse, the desire to own a home, we can progress and improve in the details of architecture, furnishings and decorations . . . be

attracted and interested by pleasing variation . . . but, at the same time, should be on guard against extremes of the bizarre. Novelty appeals for a time but is transient. You may throw away a garment because you're tired of it, but a fantastic house or furniture of faddish design, because of the considerable investment involved, cannot be

discarded so readily. Home-building, or owning, is undertaken for enduring companionship and affection. There are types of houses, just as there are types of families, and the type you choose should be the type you can live with in happiness the rest of your days, whether it be cottage or castle.

WITHIN the limits of Early American Colonial architecture, is a variety of authentic designs which have survived 200 years of the transient popularity of more aggressive types. Today, true Colonial is still the standard of good taste, whatever size a home may be. Its proportions are excellent, its contours and elevations



APPROPRIATELY CALLED "SHADY LANE" THIS IS REALLY A "BIG" LITTLE HOUSE IN WHICH A FAMILY OF THREE WOULD HAVE AMPLE ROOM AND EVEN FOUR MIGHT LIVE COMFORTABLY

pleasing to the eye, and its appropriate interior decorations and furnishings are in permanent good taste. Examine a well conducted residential development in any city of the United States. . . . you'll find the correct Colonial design beyond compare.

SO, IN presenting this cottage as an example of the ideal Early American small home,

Crossett has reached back two centuries for the enduring worth of Cape Cod's historic architecture, to interpret its charm in today's ultimate achievement in low-cost housing, the unit construction principle of "Crossett Life-Long Homes," products of the Crossett Lumber Co., Crossett, Ark.



(Continued Inside)



FOR SATIN-LIKE

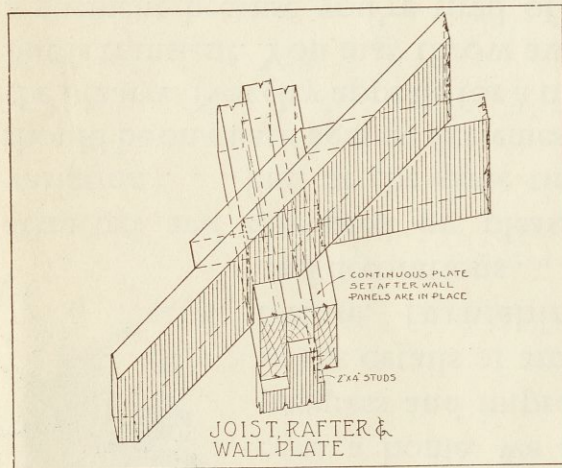
PANELED WALLS



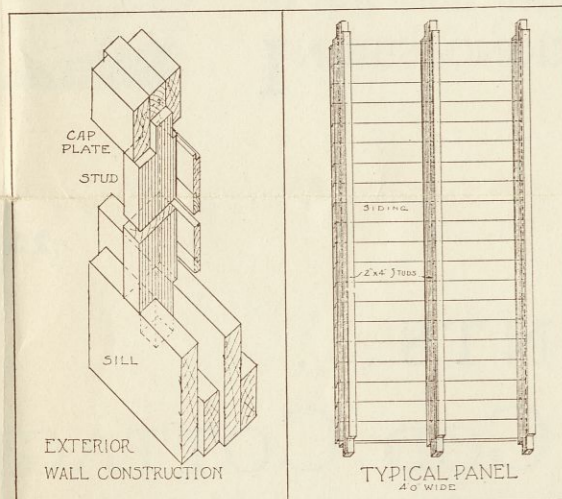
FOR LIFE-LONG

HOME BEAUTY

CROSSETT LIFE-LONG HOMES ARE PANEL-BUILT OF ARKANSAS SOFT PINE WITH ROYAL OAK FLOORING. ALL STRUCTURAL MEMBERS ARE PRESSURE TREATED TO RESIST TERMITES and DECAY—and PROVIDE A MARKED DEGREE of FIRE RETARDATION

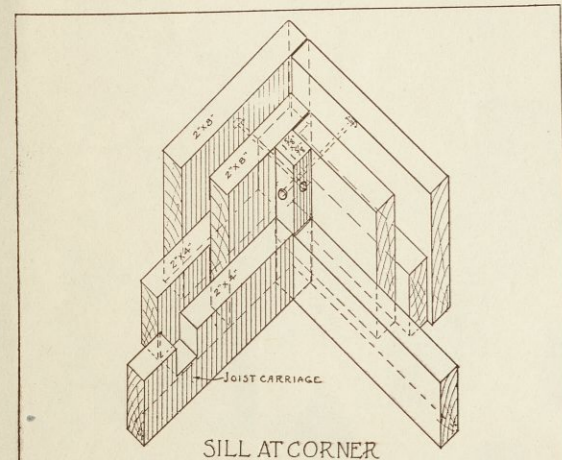


RAFTERS ARE SO FASTENED TO PLATES THAT ROOF AND WALLS ARE INTEGRAL



ANCHORAGE OF THE PANEL STUDS IN THE SILL PROVIDES SUPER STRENGTH AND RIGIDITY

SHOWS REVERSE SIDE OF EXTERIOR PANEL AND SPACE AVAILABLE FOR INSULATION



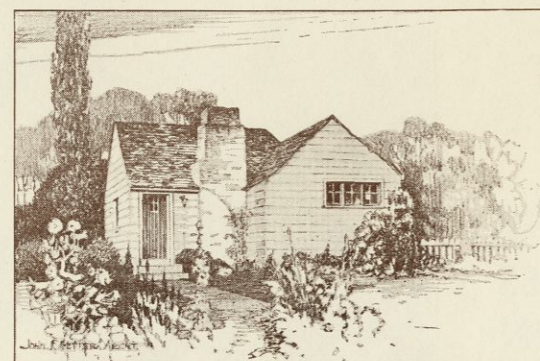
CORNER LOCK OF THE SILL DISCOUNTS ANY TENDENCY TO LATERAL STRESS OR DISTORTION

WHILE this cottage reflects a close adherence to the original Cape Cod pattern, it is recognized that the catalog of public taste and desire for individual distinction in a home require variation in design. Crossett has met these considerations by adapting to its entire line of one to five-room homes, different perspectives, elevations, room arrangement, interior finishing and equipment which respond to a wide range of popular taste, yet retain the merit of simplicity characteristic of Colonial style. A few of these are illustrated here, and still others may be had upon request, sent to the address given in this signature.

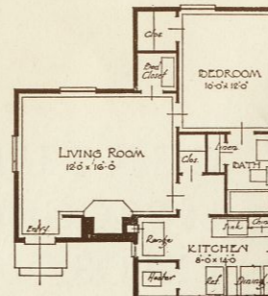
INTERCHANGEABLE FEATURE

IN CONSIDERING the purchase of a Cape Cod Cottage, or one of the other attractive Crossett Life-Long Homes, it will be borne in mind that those shown are merely typical and, by reason of the interchangeable feature of the Crossett panel, may be altered to suit. Indeed, the remarkable flexibility of Crossett's construction principle makes it possible to meet any special requirement peculiar to climate or custom in given localities. For example, the height of ceilings and such other modifications as may be desired, can be established in developing the house at the factory.

JUST as the Chicago World's Fair reveals the achievements of a Century of Progress, so do



THIS IS OUR "CRICKET ON THE HEARTH" DESIGN. HERE'S A HOME OF THREE ROOMS AND BATH, WITH A PERSONALITY OF ITS OWN . . . AND MORE CONVENIENT CLOSET SPACE THAN MANY PLANS OF TWICE THE SIZE

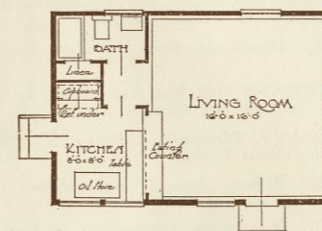


Crossett's Life-Long Homes disclose a corresponding attainment in creating a new conception of modern home and living comfort at previously unheard of low cost. In this development, Crossett has applied to home-building the principles of quantity production, similar to those which turn out a complete, inexpensive motor car ready for the user. (Patents applied for).

BUILT OF ARKANSAS SOFT PINE

CROSSETT Life-Long Homes, as exemplified by the Cape Cod Cottage, are built of scientifically seasoned, trade and grade marked Arkansas Soft Pine, with floors of Royal Oak . . . also a Crossett product. For more than 40 years this famous Pine has played an important part in the construction and finishing of thousands of American homes. In the Cape Cod Cottage it is shown in its most highly perfected state as the beautiful Pine Paneling in the living room and hallways, and as the wood-

work in the remaining rooms.



THE structural members of Crossett Life-Long Homes are

pressure treated by the scientific Wolmanizing chemical process, providing complete proof against termites and decay, and affording a marked degree of fire retardation. This treatment is odorless and does not interfere with painting and finishing.

CROSSETT HOMES ARE PERMANENT

CROSSETT Life-Long Homes will last for generations. Their staunch construction principle is the achievement of George G. Roberts, an engineer of many years' experience in developing this type of housing.

THE Crossett Lumber Company is one of the pioneer, large manufacturers of Pine, Hardwood Lumber and Oak Flooring in the South. Its comprehensive facilities have been coordinated for the large scale production of Crossett Life-Long Homes which are distributed through the established channels of the retail lumber trade. By inaugurating this timely departure from ordinary building methods, Crossett Life-Long Homes now enable a vast new group of the American public to satisfy its hunger for home-ownership and life-long happiness.

For further plans, information and the name of our nearest dealer, address

FORDYCE-CROSSETT SALES COMPANY
80 EAST JACKSON BOULEVARD
CHICAGO, ILLINOIS

SOUTHERN SALES OFFICE: FORDYCE, ARKANSAS

CROSSETT WATZKE GATES INDUSTRIES



"SLEEPY HOLLOW" IS THE NAME WE GAVE THIS ATTRACTIVE ANSWER TO THE YEARNING FOR "FOUR WALLS AND A ROOF AND A LITTLE PLOT OF GROUND OF OUR OWN"

AS FELLOW CRAFTSMEN who have collaborated in creating the Crossett Cape Cod, Fairview and Pullman Tourist Cottages, acknowledgment and appreciation are expressed to the following:

CARROLLTON METAL PRODUCTS COMPANY, Carrollton, Ohio—*Kitchen Utensils, manufactured from Republic Steel Corporation's ENDURO 18-8 Stainless Steel.*

CASEMENT HARDWARE COMPANY, 406 North Wood Street, Chicago, Illinois—*Casement Hardware for Fairview and Pullman Cottages.*

CELOTEX COMPANY, 919 No. Michigan Avenue, Chicago, Illinois—*Celotex for Cape Cod and Pullman Cottages.*

CHASE BRASS & COPPER COMPANY, 1300 West Harrison Street, Chicago, Illinois—*Flashing, Gutters and Downspouts for Cape Cod Cottage, Lighting Fixtures for Fairview and Pullman Cottages.*

COPPES BROTHERS & ZOOK, Nappanee, Indiana—*Kitchen Cabinets for Cape Cod Cottage.*

EDISON GENERAL ELECTRIC APPLIANCE CO., 5600 Taylor Street, Chicago, Illinois—*Hot Point Electric Range, Water Heater and Electric Refrigerator for Cape Cod Cottage.*

ELJER COMPANY, Ford City, Pennsylvania—*Plumbing Fixtures for Cape Cod, Fairview and Pullman Cottages.*

ESTATE STOVE COMPANY, Hamilton, Ohio—*Electric Stove and Heater for Pullman Cottage.*

FARIES MANUFACTURING COMPANY, 569 West Lake Street, Chicago, Illinois—*Bathroom Cabinets and Mirrors for Cape Cod, Fairview and Pullman Cottages.*

FIAT METAL MFG. COMPANY, 1203 Roscoe Street, Chicago, Illinois—*Showers for Fairview and Pullman Cottages.*

GENERAL ELECTRIC COMPANY, 230 South Clark Street, Chicago, Illinois—*Electric Dish Washer for Cape Cod Cottage.*

GIBBS BOARDTILE CORPORATION, 344 North Ogden Avenue, Chicago, Illinois—*Wall Tile for Cape Cod Cottage.*

GRIGSBY-GRUNOW CORPORATION, 5801 Dickens Avenue, Chicago, Illinois—*Radios for Cape Cod, Fairview and Pullman Cottages, Electric Refrigerator for Pullman Cottage.*

HOLLAND FURNACE COMPANY, 310 South Michigan Avenue, Chicago, Illinois—*Heating and Air Conditioning for Cape Cod Cottage.*

HOOVER COMPANY, North Canton, Ohio—*Hoover Electric Cleaner with attachments for Cape Cod Cottage.*

INTERNATIONAL NICKEL COMPANY, INC., 129 South Jefferson St., Chicago, Ill.—*Monel Metal Tops for kitchen in Cape Cod Cottage.*

S. C. JOHNSON & SON, INC., Racine, Wisconsin—*Interior Finishes and Exterior Paint for Cape Cod, Fairview and Pullman Cottages.*

LAWRENCE BROTHERS, Sterling, Illinois—*Hardware for Cape Cod, Fairview and Pullman Cottages.*

MORAN & HASTINGS MFG. COMPANY, 569 West Lake Street, Chicago, Illinois—*Lighting Fixtures for Cape Cod Cottage.*

MUTSCHLER BROTHERS COMPANY, Nappanee, Indiana—*Electric Water Heaters for Fairview and Pullman Cottages.*

ALFRED PEATS COMPANY, 812 Belmont Ave., Chicago, Illinois—*Wallpaper and Window Shades for Cape Cod Cottage.*

REPUBLIC STEEL CORPORATION, Youngstown, Ohio—*Bolts for Cape Cod, Fairview and Pullman Cottages furnished by the Upson Nut Division of the Republic Steel Corporation.*

SIMMONS COMPANY, 222 North Bank Drive, Chicago, Illinois—*Metal Furniture for Fairview and Pullman Cottages.*

SISALKRAFT CORPORATION, 205 West Wacker Drive, Chicago, Illinois—*Sisalkraft Paper for Cape Cod, Fairview and Pullman Cottages.*

STERLING CRAFT KITCHENS UNIQUE, INC., 533 North LaSalle Street, Chicago, Illinois—*Sterling Ti-Di-Nettes for Cape Cod and Pullman Cottages.*

STICKLEY BROTHERS COMPANY, Grand Rapids, Michigan—*Furniture for Cape Cod Cottage.*

STRINGER BROTHERS, 1100 West 38th Street, Chicago, Illinois—*Soil Pipe for Cape Cod, Fairview and Pullman Cottages.*

WEATHERBEST STAINED SHINGLE CO., North Tonawanda, New York—*Shingles for Cape Cod, Fairview and Pullman Cottages.*

WESTERN BRICK COMPANY, 228 North LaSalle Street, Chicago, Illinois—*Face Brick for Cape Cod Cottage.*

WOOD CONVERSION COMPANY, 360 North Michigan Avenue, Chicago, Illinois—*Nu-Wood for Pullman Cottage, Balsam Wool for Cape Cod, Fairview and Pullman Cottages.*

J. W. YOUNG GALLERIES, 428 North Michigan Avenue, Chicago, Illinois—*Early American Prints for Cape Cod Cottage.*

LIVABLE HOMES



AT LOW COST