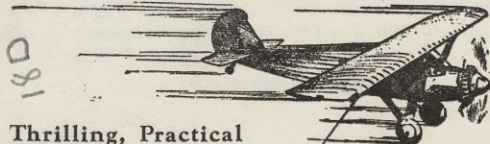


# FAREWELL by AIR MAIL

*Picked up in Flight at*  
A CENTURY OF PROGRESS 1934



18D  
Thrilling, Practical  
New U.S. Service seen  
on South Lagoon daily  
at 12 noon, 2 and 4  
o'clock sharp



Via Adams Pick-up  
& Delivery and  
Braniff Airways:

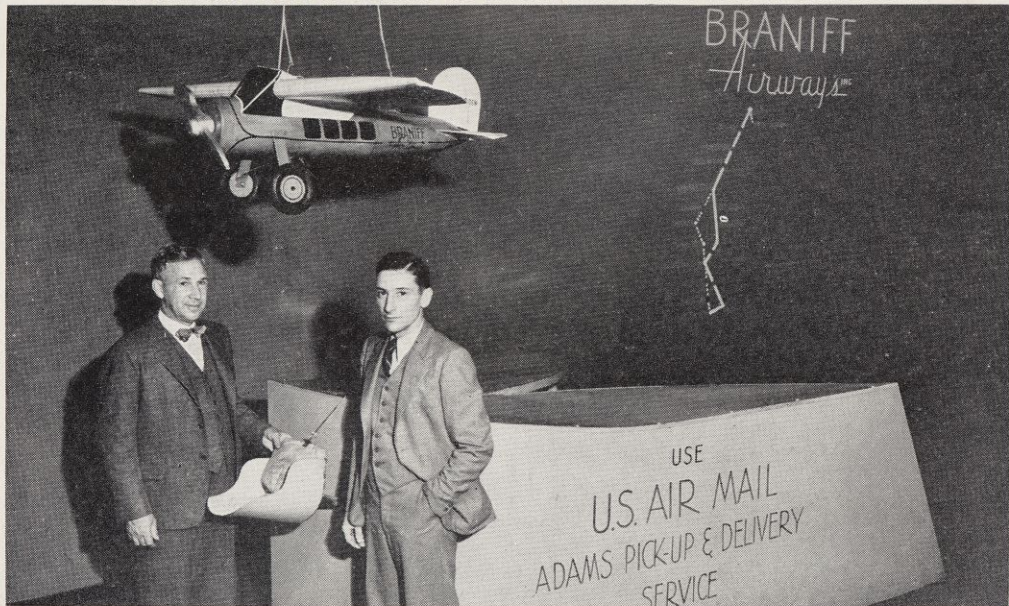
Chicago, Kansas City, Wichita,  
Tulsa, Oklahoma City, Fort  
Worth and Dallas

STAMP HERE  
U. S. AIR  
POSTAGE  
6 CENTS

## VIA AIR MAIL



INVENTOR AND PILOT AT EXHIBIT OF WORKING MODEL OF PICK-UP MECHANISM.



Dr. Lytle S. Adams, Inventor, and Eddie Gerber, Flyer of remarkable Air Mail Service of Braniff Airways, at World's Fair,

**MODEL REVEALS METHOD  
OF AIR MAIL PICK-UP  
AND DELIVERY IN FLIGHT**

A small working model of the mechanism and airplane used by Braniff Airways, is shown to World's Fair visitors by the inventor, Dr. Lytle S. Adams, in General Exhibits Building 3, attracting large, interested throngs.

WRITE MESSAGE HERE

**POST CARD**

Space for Address Only

POSTAGE

1 Cent

Air Mail

6 Cents

**AT A CENTURY OF PROGRESS 1934**

AIRPLANE PICK-UP AND DELIVERY OF MAIL IN FLIGHT AT WORLD'S FAIR LAGOON.

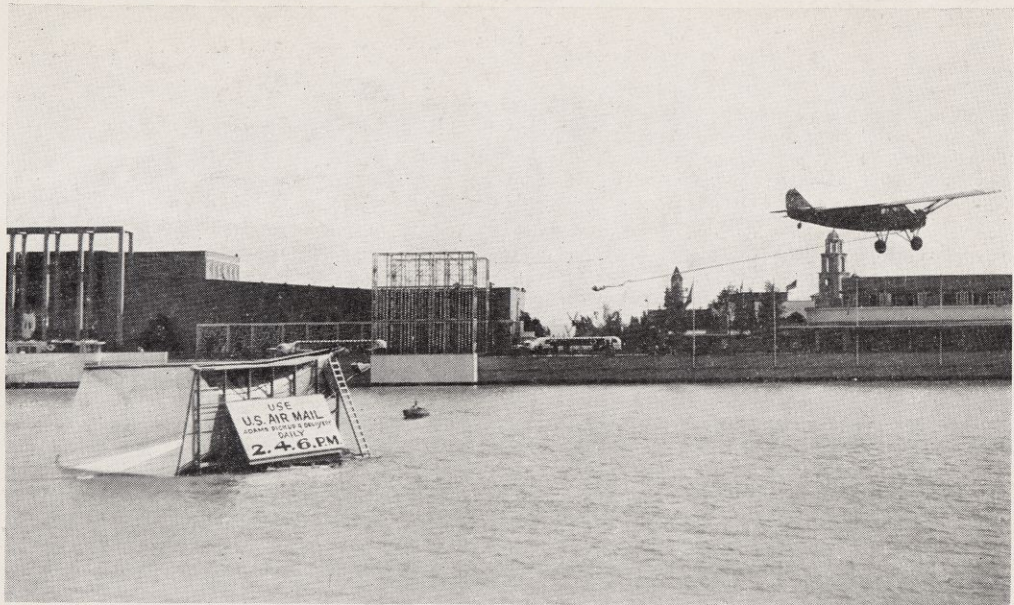


Photo of Braniff Airways Plane Taking Pouch on Cable After Leaving One at Adams System Device.

**AIR MAIL POUCH DELIVERED  
ANOTHER PICKED UP INSTAN-  
TANEOUSLY IN FLIGHT.**

By the Adams System, in three flights every day, Braniff Airways makes lightning mail exchange before vast crowds. Time consumed to make connection with great air trunk lines at Municipal Airport is reduced four-fifths.

WRITE MESSAGE HERE

**POST CARD**

Space for Address Only

POSTAGE  
1 Cent  
Air Mail  
6 Cents

**AT A CENTURY OF PROGRESS 1934**