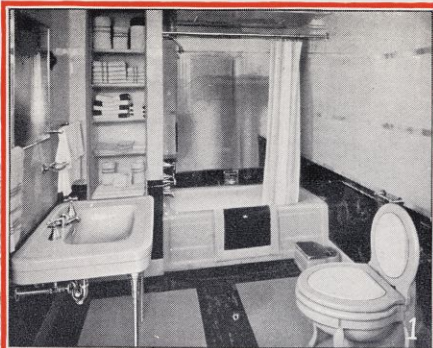




CRANE
BATHROOMS
in Model Homes at
CENTURY OF PROGRESS



UNPRECEDENTED is the unanimity of approval which the designers of model homes showered upon Crane equipment. Their excellent judgment is evidenced in the accompanying bathroom illustrations. Each setting reflects the beauty of Crane designs, the adaptability of each fixture to the most modern installation. Fixtures selected are:

1. Wieboldt's—Rostone House

C 156-L10 30x24" NORWICH Lavatory.

C 3308-L 5' CORWITH Bath with ACCESSO waste, transfer valve shower and overrim supply fixture with REFRESHOR head.

C 10570 SANTON siphon jet closet with ALPHA VACUUM-BREAKER flushing valve and closet chair. All fixtures are No. 415-A Pale Jade.

2 and 3. Stran-Steel-Irwin House

C 138-M9T Design 40 30x24" CORWITH Lavatory.

C 10384 CRANE SIWELCLO close-coupled siphon jet closet.

C 3336-H32 Design 40 5½' TARNIA bath, overrim fixture, mixing valve shower, and ACCESSO waste.

4. Crystal House (Women's Bathroom)

C 138-M12 Design 50 27x22" CORWITH Lavatory on tubular metal frame.

C 3330-M32 Design 50 5' TARNIA bath, overrim fixture and ACCESSO waste. (Not illustrated.)

C 10482 MONADA one-piece siphon jet closet.

C 12657 Design 50 vitreous china bidet. All fixtures are No. 495 Sun Tan.

5. Florida Tropical Home

C 3205-RH51 Design 40 5½' MARSHALL bath with supply fixture with through-rim spout, mixing valve shower, ACCESSO waste, and **C 26654** bath rack.

C 10482 MONADA one-piece siphon jet closet. (Not illustrated.)

C 140-M12 Design 50 30x24" CORWITH Lavatory on legs. All fixtures are No. 400 Orchid Pink.

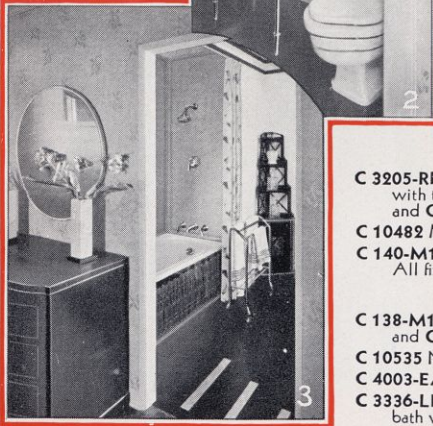
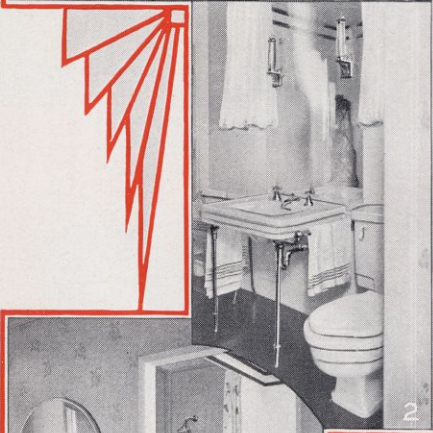
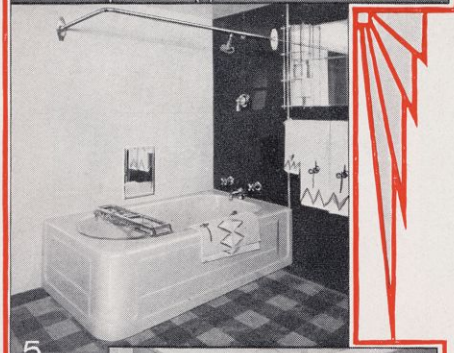
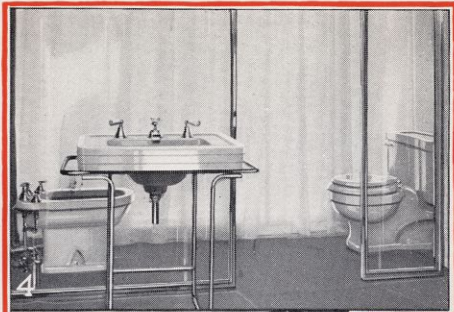
6. Lumber Institute House.

C 138-M12T Design 40 30x24" No. 450 Black CORWITH Lavatory and **C 3950-R** 27x78" plate glass door.

C 10535 No. 410 Citrus Yellow SANTONIA close-coupled closet.

C 4003-EA Design 40 built-in shower with **C 3950-L** 27x78" door.

C 3336-LH32 Design 40 5½' No. 410 Citrus Yellow TARNIA bath with overrim fixture and ACCESSO waste. (Not illustrated.)



MODEL HOMES *with* CRANE BATHROOMS

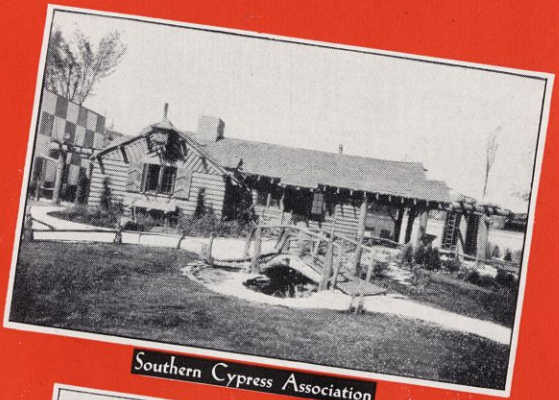
BEST FOOT FORWARD
 A creative specialist or expert will not exhibit his work unless from every possible viewpoint it satisfies. That is why the architects and engineers of these eleven model homes at the 1934 Century of Progress chose Crane fixtures. It is an unequalled tribute to the excellence of products marked "Crane." Perfected for the highest sanitary standards, beautiful to look upon, appropriate to the decorative scheme and priced for the widest possible requirements, they satisfy experts.



Florida House



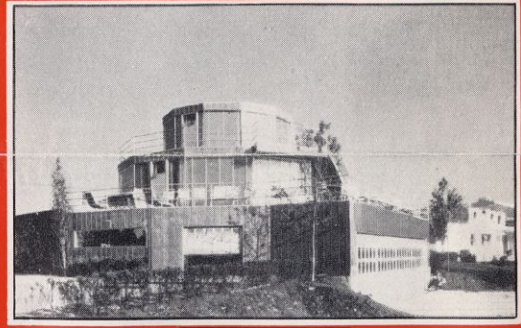
Stran-Steel-Irwin Garden Home



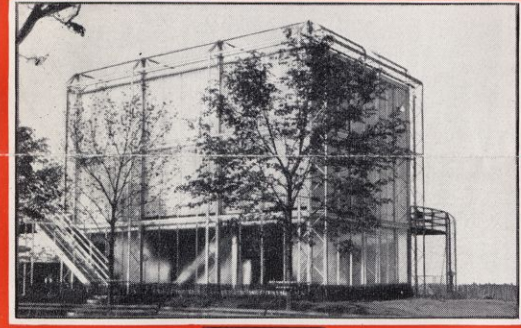
Southern Cypress Association



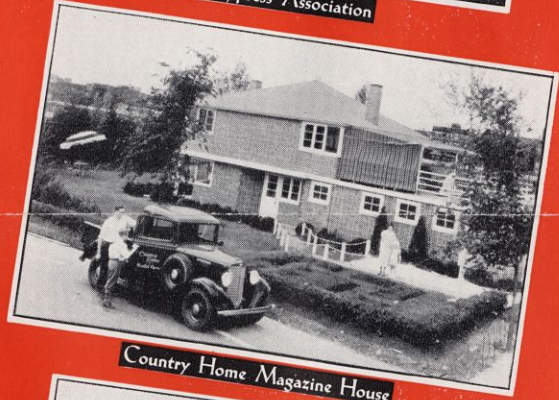
Stran-Steel-Irwin House



House-of-Tomorrow



Crystal House



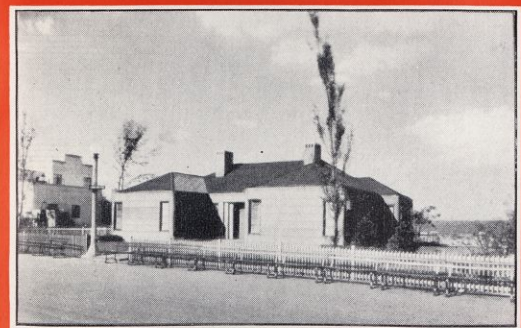
Country Home Magazine House



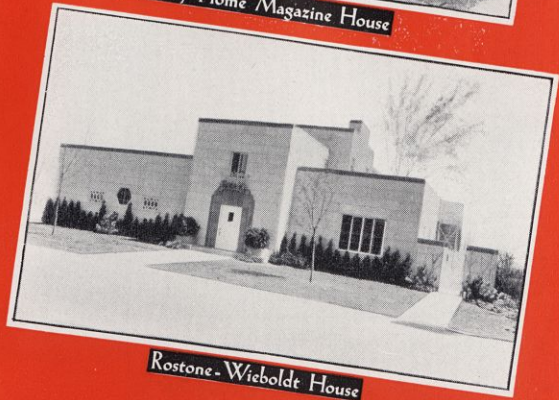
Armco-Ferro Enamel Mayflower House



Armco-Ferro Enamel Guest House



Lumber Institute House



Rostone-Wieboldt House

ELEVEN EXPERT VOTES FOR BATHROOMS BY CRANE

HEALTH PROTECTION FOR ALL

A first aid kit may be in your house unnoticed for months and months, but in an emergency you appreciate its service and its value. So it is with the service of your plumbing contractor. The built-in convenience which he installed in your home is not fully appreciated until something goes wrong—a pipe leaks, hot water is not available, or a drain becomes stopped. Then you appreciate your contractor, who is ever ready to serve you.

LOOK FOR THE CRANE TRADE-MARK

« « DEMAND QUALITY » »

ALL CRANE PRODUCTS ARE MARKED



Build a Permanent Reputation with Crane Quality Products

The plumbing contractor who installs and sells Crane Plumbing Fixtures builds a permanent reputation, a reputation backed by public confidence. For over 79 years the Crane trade-mark has meant to the public the best that can be produced, a quality product at a reasonable cost.



FOUNDED BY R. T. CRANE, 1855

CRANE CO.



MANUFACTURERS OF

VALVES, FITTINGS, FABRICATED PIPE, PUMPS,
HEATING AND PLUMBING MATERIALS

836 S. MICHIGAN AVE.

CHICAGO

CIRCULAR No. 653-C
PRINTED IN U. S. A.

COPYRIGHT, CRANE CO.
AUGUST, 1934.