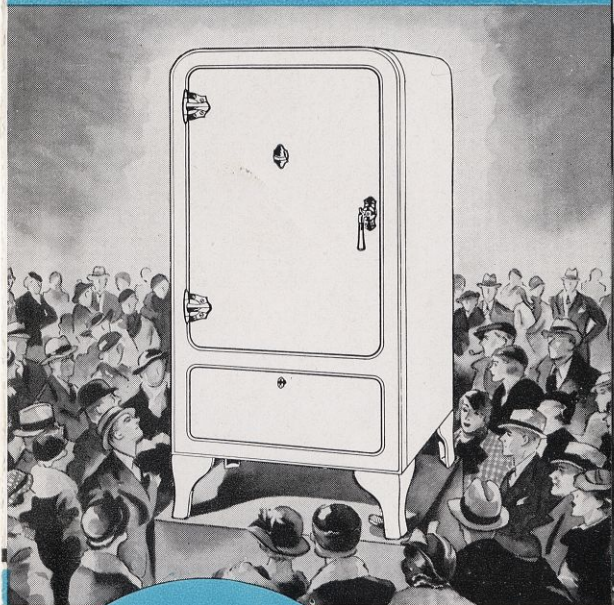


The Beautiful
NEW 1934
GRUNOW



It's
SAFE
with
CARRENE

**LOOK
INSIDE
BEFORE
YOU
BUY!**

The *New* GRUNOW

Famous GRUNOW Standard MODELS

... FOR EVERY PURSE AND FAMILY

It's Important TO KNOW WHAT'S INSIDE THE ELECTRIC REFRIGERATOR YOU BUY!

Electricity does not freeze the ice cubes, nor does it provide a cold temperature in the refrigerator. Instead, a "refrigerant" does this important work.

● Only Grunow uses safe Carrene refrigerant which, instead of being a gas, is a liquid, under all ordinary conditions. This safe liquid refrigerant operates under a vacuum. There is no pressure used, to strain pipes and connections, nor to cause the refrigerant to leak out into the room. But even if it should leak out into the room it would do no harm of any kind, either to plants, pets, or humans. Because Carrene is really *safe* as a refrigerant—so safe that it can be carried around in open pails, like water. Yet, with all its safety and simplicity, it is one of the most efficient refrigerants known. It permits the use of comparatively simple mechanisms and does its work at low operating cost.

GRUNOW MODEL 54-D

Has 5.4 cubic feet of food storage space and 10.34 square feet of shelf area (N.E.M.A. ratings). Outside height is 56 17/32 inches, width 24 1/2 inches, depth over hardware 28 5/16 inches. Freezing compartment in center. Eighty-four ice cubes. Ice compartment protected by chromium plated door. Flat-bar shelves. Uses safe Carrene refrigerant.



THE NEW GRUNOW STANDARD MODELS

Grunow Standard Models (Nos. 50G, 60G, and 70G), of a more conventional design than the Grunow De-Luxe Models, but using safe Carrene and containing many of the important Grunow features, offer a real attraction to the housewife. They are made in three sizes, with net cubic foot storage capacity of 4.5 cubic feet, 5.5 cubic feet and 6.8 cubic feet respectively (N.E.M.A. ratings). They have three coats of the famous DuLux finish, baked on.

Vitreous enamel interior finish, acid-resisting on bottom, flat-bar shelves, forged brass chromium finish hardware and 8-inch broom-high legs. They use dry-zero insulation throughout. Have an enclosed ice-freezing compartment and furnish plentiful quantities of ice cubes, frozen in good time. For the home seeking a safe refrigerator, with all practical features, and built to furnish complete protection for food at a modest cost, both as regards the initial purchase price and cost of operation, any of these standard models makes an ideal purchase.

IT'S TIME AMERICA KN

The *New* GRUNOWS have *Safe* CARRENE . . .

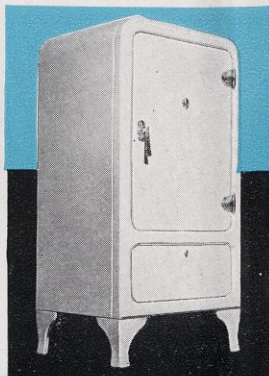
It's Important TO KNOW WHAT'S INSIDE THE ELECTRIC REFRIGERATOR YOU BUY!

Electricity does not freeze the ice cubes, nor does it provide a cold temperature in the refrigerator. Instead, a "refrigerant" does this important work.

● Only Grunow uses safe Carrene refrigerant which, instead of being a gas, is a liquid, under all ordinary conditions. This safe liquid refrigerant operates under a vacuum. There is no pressure used, to strain pipes and connections, nor to cause the refrigerant to leak out into the room. But even if it should leak out into the room it would do no harm of any kind, either to plants, pets, or humans. Because Carrene is really *safe* as a refrigerant—so safe that it can be carried around in open pails, like water. Yet, with all its safety and simplicity, it is one of the most efficient refrigerants known. It permits the use of comparatively simple mechanisms and does its work at low operating cost.

GRUNOW MODEL 54-D

Has 5.4 cubic feet of food storage space and 10.34 square feet of shelf area (N.E.M.A. ratings). Outside height is 56 17/32 inches, width 24 1/2 inches, depth over hardware 28 5/16 inches. Freezing compartment in center. Eighty-four ice cubes. Ice compartment protected by chromium plated door. Flat-bar shelves. Uses safe Carrene refrigerant.



GRUNOW MODEL 80-SD

Has 8 cubic feet of food storage space and 15.67 square feet of shelf area (N.E.M.A. ratings). Outside height is 62 1/4 inches, width 31 1/4 inches, depth over all hardware 28 5/16 inches.

For features consult table on reverse side.



● Buy a Grunow because of safe Carrene refrigerant, that protects the health of the family and protects the food you store in the refrigerator. But buy it, too, because of its many, many convenience features. They have caused women everywhere to say that at last Grunow has produced a refrigerator that is truly amazing. Glance at the outside of gleaming white, non-chip, baked-on DuLux finish, all corners round for symmetry of design, as well as for easy cleaning. The hardware, of jewel-box type, is beautiful. Legs are broom-high, and all storage space is waist-high, in effect.

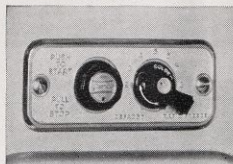
● A glance inside reveals rounded corners for easy cleaning, also; shelving that prevents tipping over of small dishes; a clever device for removing ice trays and popping cubes out with a twist of the wrist. In fact, throughout its appointments, the Grunow exemplifies the master builder, who understands the housewife's refrigeration problems.



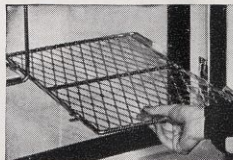
Metflex ice cube trays



Triple baked-on DuLux outside finish



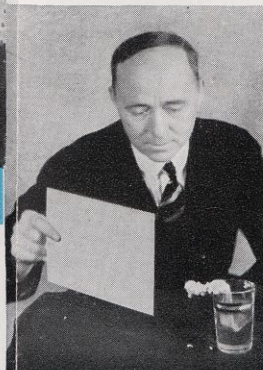
11 freezing speed switch with fast-freeze and defrost



Diamond-mesh, spill-proof shelves



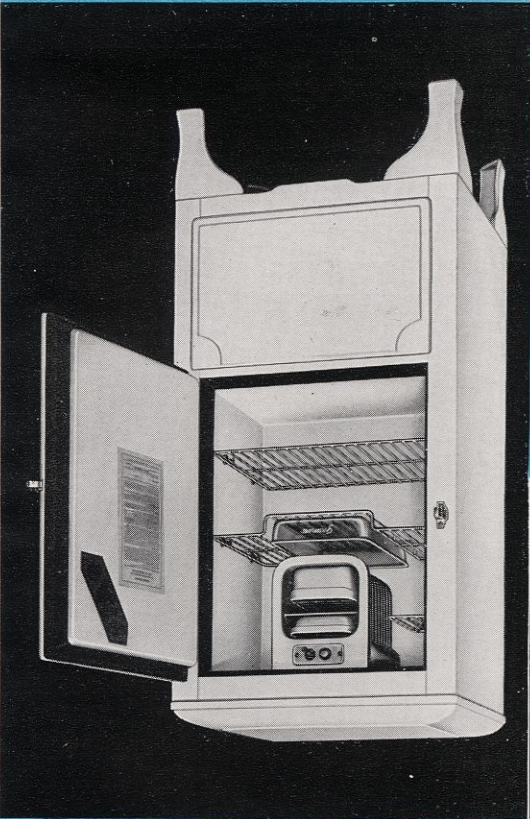
12-quart, acid-resisting, porcelain crisper part of shelf



Fan it and it freezes. Such a simple test as this with Carrene—the safe Grunow refrigerant—a test that can be made by a child, proves the simplicity and efficiency of Grunow's Carrene refrigerant.

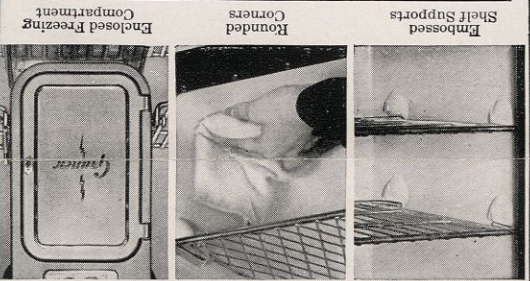
IT'S TIME AMERICA KNEW *What's Inside* AN ELECTRIC REFRIGERATOR

ITS TIME AMERICA KNEW *What's Inside* AN ELECTRIC REFRIGERATOR



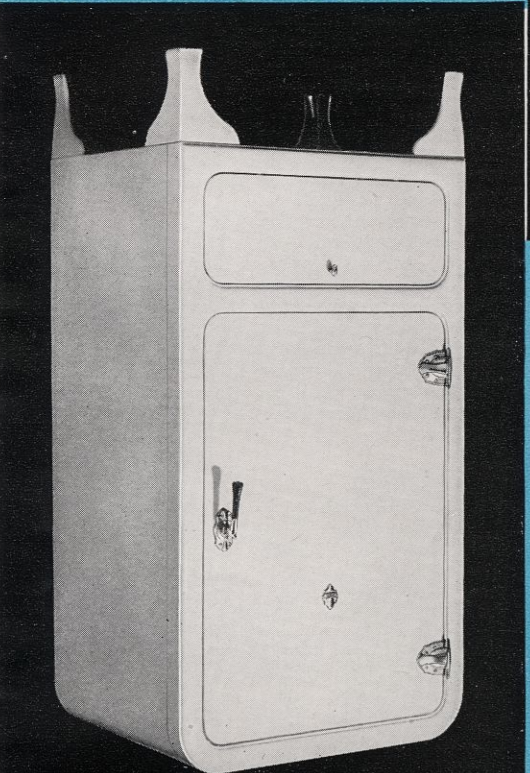
GRUNOW MODEL 46

↑ more than twenty other features. 4.6 cubic feet food space. 8.16 square feet shelf area. Cabinet outside 24 1/4 inches wide, 54 inches high, 25 3/4 inches deep over hardware. 6 pounds of ice frozen in center freezing unit. 10-speed freezing control, flat-bar shelves, safe Carrene, and



↓ Provides 8 cubic feet of food storage space and 15.67 square feet of shelf area (N.E.M.A. ratings). Outside height 62 1/4 inches, width 31 1/4 inches, depth over hardware 28 5/16 inches. For features refer to table in center of page.

GRUNOW MODEL 80-D



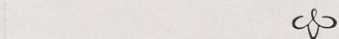
GRUNOW CONSTRUCTION DETAILS

are truly the handiwork of a master craftsman. Into them William C. Grunow, genius of manufacture, has put all of the thought and knowledge of years of research, plus millions in investment—to build more beautiful and more efficient refrigerators than ever were known before.

Grunow refrigerators are not merely beautiful in looks, but into each and every one of them is put the finest material available. Dry-zero insulation is used throughout, 3 1/2 inches thick in doors and 3 inches thick in cabinet walls, in practically all cases.

GRUNOWS

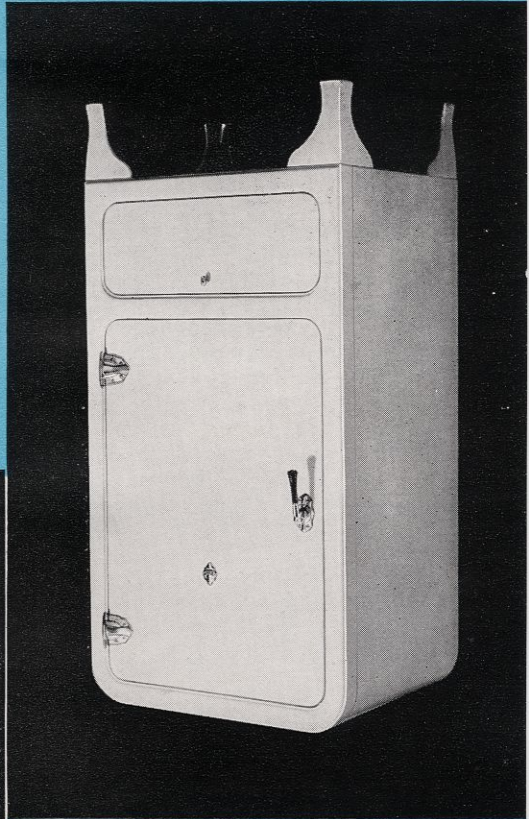
The New and Distinguished



The new Grunow silent rotary unit, using super-safe Carrene, with the entire mechanism mounted on cushioned rubber, means that the refrigerator itself is as near silent in operation as any mechanical unit could possibly be. The unit is built with its own permanent supply of oil. Cooling fan, motor and pump are mounted on a single shaft, which eliminates all pulleys, belts and gears. The new Grunows use only about 2/3 as much current during the day, in average service, as an ordinary light bulb would use during the same period of time. The new Grunow unit runs less than 20% of the time under average service condition (less than five hours per day). Of course, this will vary where extremely hot temperatures are experienced, and where unusual heat conditions are permitted in the kitchen. But the Grunow is super-efficient, regardless of weather.

ENDORSED BY GOOD HOUSEKEEPING INSTITUTE and other leading testing organizations

Model Nos.	506	606	706	50D	65D	80D	65SD	80SD
CARRENE	YES	YES	YES	YES	YES	YES	YES	YES
3 Coats Dulux Finish Baked on	YES	YES	YES	YES	YES	YES	YES	YES
Foot-Pedal Door Opener	NO	NO	NO	YES	NO	NO	NO	YES
Ice Tray Release	NO	NO	NO	NO	NO	NO	NO	YES
Melliflex Ice Trays	NO	NO	NO	NO	NO	NO	NO	YES
Pounds of Ice Cubes at One Freezing	6	6	8	6	8	10	8	10
Fast-Freeze Switch	NO	NO	NO	NO	NO	NO	NO	YES
Removable Ice Tray Shelves	NO	NO	NO	NO	NO	NO	NO	YES
12-qt. Built-in Vegetable Crisper	NO	NO	NO	NO	NO	NO	NO	YES
Automatic Interior Light	NO	NO	NO	YES	NO	YES	YES	YES
Diamond-Mesh Shelves	NO	NO	NO	NO	NO	NO	NO	YES
Freezing Unit in Center	NO	NO	NO	NO	NO	NO	NO	YES
Rubber Sealed Door on Freezing Chamber	YES	YES	YES	YES	YES	YES	YES	YES
Automatic Defrosting Switch	NO	NO	NO	NO	NO	NO	NO	YES
Number of Positions on Freezing Control	9	9	9	9	9	9	9	11
Glass Defrosting Tray	YES	YES	YES	YES	YES	YES	YES	YES
Seamless Acid-Proof Porcelain Interior	YES	YES	YES	YES	YES	YES	YES	YES
Inside Corners Rounded for Easy Cleaning	NO	NO	NO	YES	YES	YES	YES	YES
Embossed Shelf Supports of Porcelain	YES	YES	YES	YES	YES	YES	YES	YES
Extra Space for Tall Bottles	NO	NO	NO	NO	NO	YES	YES	YES
Removable Shelf Sections	YES	YES	YES	YES	YES	YES	YES	YES
Waist-High Shelves	YES	YES	YES	YES	YES	YES	YES	YES
Metal Parts Rust-Proofed	YES	YES	YES	YES	YES	YES	YES	YES
Flush Type Door	NO	NO	NO	YES	YES	YES	YES	YES
Trigger-Type Hand Latch	YES	YES	YES	YES	YES	YES	YES	YES
Semi-Concealed Chromium Finish Hardware	YES	YES	YES	YES	YES	YES	YES	YES
Broom-High Legs	YES	YES	YES	YES	YES	YES	YES	YES
Dry-Zero Insulation	YES	YES	YES	YES	YES	YES	YES	YES
Hydrolene-Sealed Against Moisture	YES	YES	YES	YES	YES	YES	YES	YES
All-Steel with Hardwood Reinforcement	YES	YES	YES	YES	YES	YES	YES	YES
Forced Draft Air-Cooling	YES	YES	YES	YES	YES	YES	YES	YES
Mechanical Unit Mounted on Rubber Cushions	YES	YES	YES	YES	YES	YES	YES	YES
Flat-Bar Shelves	YES	YES	YES	YES	YES	YES	YES	NO
Practically Vibrationless Operation	YES	YES	YES	YES	YES	YES	YES	YES
Fast-Freeze Tray	NO	NO	NO	NO	NO	NO	NO	YES



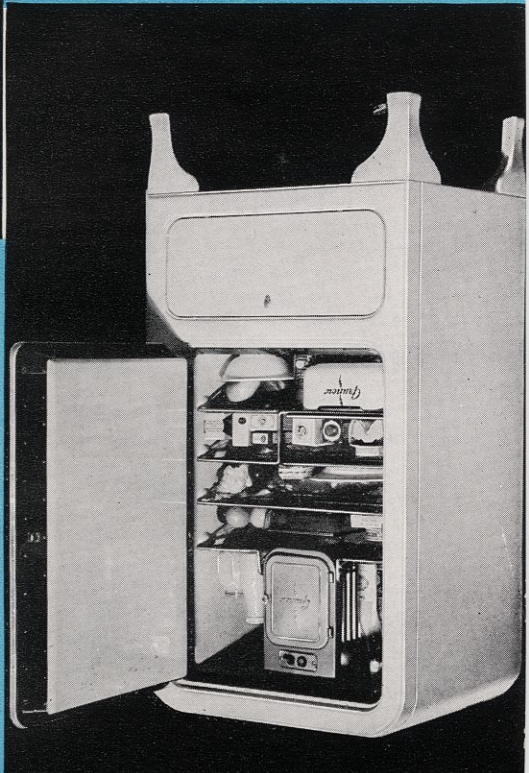
GRUNOW MODEL 65-D

↑ page. 6.53 cubic feet of food storage space and 13.96 square feet of shelf area (N.E.M.A. ratings). Outside height 58 1/2 inches, width 29 5/16 inches, depth over hardware 28 5/16 inches. Refer to features in center of



↓ 6.53 cubic ft. food storage space. 13.96 sq. feet of shelf area (N.E.M.A. ratings). Outside height 58 1/2 inches. Outside width 29 5/16 inches. Depth over all hardware 28 5/16 inches. Uses safe Carrene refrigerant. For features consult table in center of page.

GRUNOW MODEL 65-SD





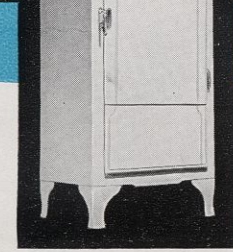
12-quart, acid-resisting, porcelain crispers, porcelain shelves
 Diamond-mesh, spill-proof shelves
 Fan and its
 Frezes, such as this with
 triple baked-on DuLux out-
 side finish
 Metflex ice cube trays
 11 freezing speed switch
 with fast-freeze and defrost



● Buy a Grunow because of safe Carrene refrigerator, that protects the health of the family and protects the food you store in the refrigerator. But buy it, too, because of its many, many convenience features. They have caused last Grunow has produced a refrigerator that is truly amazing. Glance at the outside of gleaming white, non-chip, baked-on DuLux finish, all corners round for symmetry of design, as well as for easy cleaning. The hardware, of easy-box type, is beautiful. Legs are broom-high, and all storage space is waist-high, in effect. ● A glance inside reveals rounded corners for easy cleaning; also, shelving that prevents tipping over of small dishes; a clever device for removing ice trays and popping cubes out with a twist of the wrist. In fact, throughout its appointments, the Grunow exemplifies the master builder, who understands the housewife's refrigeration problems.

The New GRUNOWS have Safe CARRENE...

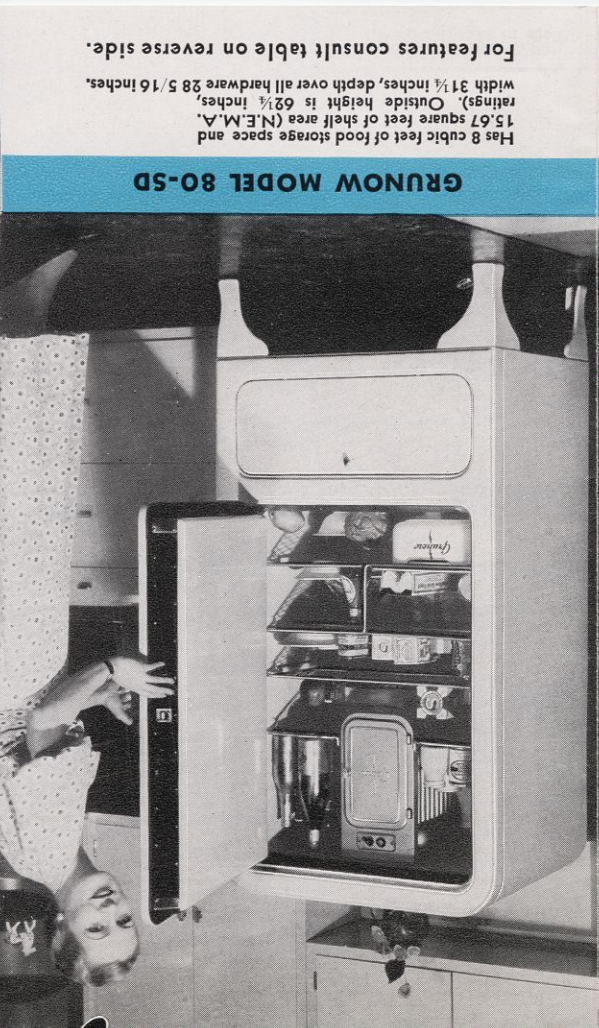
Famous GRUNOW Standard MODELS ... FOR EVERY PURSE AND FAMILY



THE NEW GRUNOW STANDARD MODELS

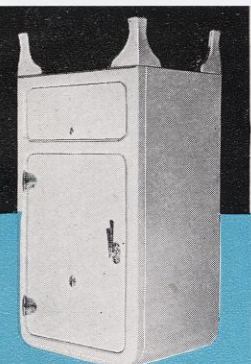
Grunow Standard Models (Nos. 50G, 60G, and 70G), of a more conventional design than the Grunow De-Luxe Models, but using safe Carrene and containing many of the important Grunow features, offer a real attraction to the housewife. They are made in three sizes, with net cubic foot storage capacity of 4.5 cubic feet, 5.5 cubic feet and 6.8 cubic feet respectively (N.E.M.A. ratings). They have three coats of the famous DuLux finish, baked on.

Vitreous enamel interior finish, acid-resisting on bottom, flat-bar shelves, forged brass chromium finish hardware and 8-inch broom-high legs. They use dry-zero insulation throughout. Have an enclosed ice-freezing compartment and furnish plentiful quantities of ice cubes, frozen in good time. For the home seeking a safe refrigerator, with all practical features, and built to furnish complete protection for food at a modest cost, both as regards the initial purchase price and cost of operation, any of these standard models makes an ideal purchase.



Has 8 cubic feet of food storage space and 15.67 square feet of shelf area (N.E.M.A. ratings). Outside height is 62 1/4 inches, width 31 1/4 inches, depth over all hardware 28 5/16 inches. For features consult table on reverse side.

GRUNOW MODEL 80-SD



Has 5.4 cubic feet of food storage space and 10.34 square feet of shelf area (N.E.M.A. ratings). Outside height is 56 17/32 inches, width 24 1/2 inches, depth over hardware 28 5/16 inches. Freezing compartment in center. Eighty-four ice cubes, ice compartment protected by chromium plated door. Flat-bar shelves. Uses safe Carrene refrigerator.

GRUNOW MODEL 54-D

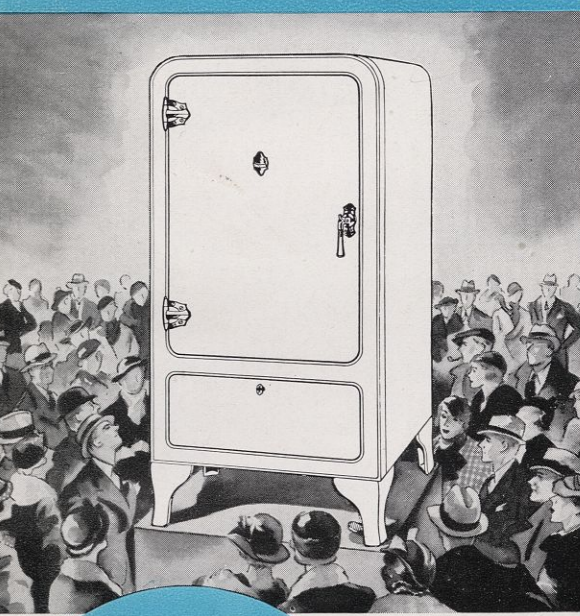
Electricity does not freeze the ice cubes, nor does it provide a cold temperature in the refrigerator. Instead, a "refrigerant" does this important work. ● Only Grunow uses safe Carrene refrigerator which, instead of being a gas, is a liquid, under all ordinary conditions. This safe liquid refrigerant operates under a vacuum. There is no pressure used, to strain pipes and connections, nor to cause the refrigerant to leak out into the room. But even if it should leak out into the room it would do no harm of any kind, either to plants, pets, or humans. Because Carrene is really safe as a refrigerant—so safe that it can be carried around in open pails, like water. Yet, with all its safety and simplicity, it permits the use of comparatively simple mechanisms and does its work at low operating cost.

It's Important to Know WHAT'S INSIDE THE ELECTRIC REFRIGERATOR YOU BUY!

THESE GRUNOWS WITH Safe CARRENE CONTAIN FEATURES TO AMAZE AND DELIGHT.

1. Super-safe Carrene
2. Foot-pedal door opener
3. New type ice tray release
4. Metflex ice trays
5. 8-10 pounds ice at a freezing
6. Extra fast freezing feature
7. Removable ice tray shelves
8. Acid-proof vegetable crisper
9. Spill-proof mesh shelving
10. Interior flood lighting
11. Central location of freezing unit
12. Sealed-in freezing compartment
13. 11-speed freezing control
14. Rapid freezing switch
15. Special defrosting arrangement
16. Glass defrosting tray
17. Seamless acid-proof porcelain lining
18. Rounded corners for easy cleaning
19. Embossed shelf supports instead of hooks
20. Ample space for tall bottles
21. Removable shelf section for large objects
22. Waist-high shelves
23. All metal parts rust-proofed
24. Baked DuLux triple finish on cabinet
25. Flush-type door with rubber seal
26. Trigger-type hand latch
27. Semi-concealed hardware in chromium finish
28. Broom-high legs
29. Extra thick dry-zero insulation
30. Hydrolene-sealed against atmospheric moisture
31. Improved sealed Grunow Carrene rotary unit with permanent supply of oil.
32. Nearly silent, and practically vibrationless in operation
33. Forced draft air cooling
34. Mechanism mounted on cushion rubber
35. Uses less current per day than ordinary light bulb for same period
36. Over-size unit for efficiency in hottest climates

The Beautiful NEW 1934 GRUNOW



Manufactured by
 GENERAL HOUSEHOLD UTILITIES CO.
 CHICAGO
 (No connection with any other company)

It's SAFE with CARRENE

LOOK INSIDE BEFORE YOU BUY!

THESE GRUNOWS WITH *Safe* CARRENE CONTAIN FEATURES TO AMAZE AND DELIGHT .

1. Super-safe Carrene
2. Foot-pedal door opener
3. New type ice tray release
4. Metflex ice trays
5. 8-10 pounds ice at a freezing
6. Extra fast freezing feature
7. Removable ice tray shelves
8. Acid-proof vegetable crisper
9. Spill-proof mesh shelving
10. Interior flood lighting
11. Central location of freezing unit
12. Sealed-in freezing compartment
13. 11-speed freezing control
14. Rapid freezing switch
15. Special defrosting arrangement
16. Glass defrosting tray
17. Seamless acid-proof porcelain lining
18. Rounded corners for easy cleaning
19. Embossed shelf supports instead of hooks
20. Ample space for tall bottles
21. Removable shelf section for large objects
22. Waist-high shelves
23. All metal parts rust-proofed
24. Baked DuLux triple finish on cabinet
25. Flush-type door with rubber seal
26. Trigger-type hand latch
27. Semi-concealed hardware in chromium finish
28. Broom-high legs
29. Extra thick dry-zero insulation
30. Hydrolene-sealed against atmospheric moisture
31. Improved sealed Grunow-Carrene rotary unit with permanent supply of oil.
32. Nearly silent, and practically vibrationless in operation
33. Forced draft air cooling
34. Mechanism mounted on cushion rubber
35. Uses less current per day than ordinary light bulb for same period
36. Over-size unit for efficiency in hottest climates

Manufactured by
GENERAL HOUSEHOLD UTILITIES CO.
CHICAGO
(No connection with any other company)