

13B
What It Will
Cost *YOU*
to See

Chicago's
New 1934
World's
Fair



OPENS MAY 26

LAST YEAR'S AVERAGE FAIR VISITOR SPENT ONLY \$1.17

• • • after buying an admission ticket. This included food, entertainment and transportation

What Will It Cost You?

Admission to Fair 50c Children 25c

(Children admitted to Grounds and all concessions for 5c on Children's Days)

All important exhibit buildings—Hall of Science, Travel and Transport, General Exhibits, Electrical, Motor Exhibits, Foreign Country Exhibits and almost 100 others. Admission FREE.

50 sideshows in Fair Grounds - 5c to 25c

SCIENCE YOU WILL UNDERSTAND
WORLD FAMOUS BEACHES
BOARD WALKS ON THE SHORES OF
LAKE MICHIGAN
WATER CARNIVALS



AVENUE OF FLAGS

KAUFMANN-FABRY PHOTOS

You Can Enjoy Chicago, Too!

Day's ride across Lake Michigan,
round trip - - - - - \$1.00
Sightseeing trip around Chicago - \$1.50-\$2.50
Theatre - 55c to \$2.50 Movies - 15c to 75c
Baseball (Cubs or White Sox) 50c, \$1.00, \$1.50
Golf - 175 sporty courses - parks - 15c round up
Clubs' daily fees range from 50c to \$2.00 week
days, \$1.00 to \$3.00 Sundays
Street car, elevated and bus lines, all over
Chicago - - - - - 7c to 10c
Taxicab fares — 10c each 2/3 mile and 5c each
1/3 mile (no charge for extra passengers)
Hotel and dining room rates elsewhere in this
folder.

It's a New Fair with all the best features of the old—

THIS is not the same World's Fair that 22,500,000 persons saw last year. This is a NEW exposition, one that will offer more entertainment, enjoyment and education than you ever dreamed of at a lower cost than you would think possible. Yet, all the important basic exhibits are back enlarged and improved.

YOU won't recognize the place this year. New colors. New lighting, more spectacular than ever. New buildings, scores of them. New exhibits, new free features, many more than last year.

JUST think—a whole street of foreign villages, patterned after the Belgian Village that was the talk of the world in 1933. Make your own world tour in a day. See Morocco, Italy, France. Ice skate in a German Black Forest Village (even if it's summer in Chicago). Watch them make cheese in Switzerland and beer in Bavaria. Thrill to the click of Spanish castanets and the clatter of Dutch wooden shoes. Chat with Samuel Johnson in the Cheshire Cheese Inn of Old England and

eavesdrop on John Alden and his Priscilla in Colonial America.

THERE will be much more for you to wonder at. A new \$1,500,000 motor exhibit covering eleven acres with intriguing displays and restful gardens. New lagoon theatres offering the best of music, opera and other entertainment **FREE**. Special events and celebrations—new spectacles every day.

YOU can take street car, bus, boat, interurban or automobile to various gates. You can walk from the heart of Chicago to the Fair in twenty minutes or ride in five or six. Buses will take you anywhere in the Fair Grounds for ten cents. Parking space for your car within walking distance.

BEST of all, so much of the new Fair is **FREE**. Eighty-four miles of free exhibits. Free shows and concerts. Free sporting events. Free parks and picnic grounds. **FREE** rest rooms everywhere this year.

IT'S A NEW DEAL IN EXPOSITIONS.



HALL OF STATES



BELGIAN VILLAGE

CHICAGO IS AN EXPOSITION IN ITSELF. In the World's Fair you will behold the greatest mass spectacle of all time with a background hailed as one of the wonder cities of modern civilization. Where a frontier blockhouse braved imposing Lake Michigan a short hundred years ago, you will find a towering wall of skyscrapers bordering the famous Loop. The doors will be wide open to you at the Adler Planetarium—the greatest demonstration of the workings of the universe on the Western hemisphere—at the Field Museum of Natural History, the Chicago Historical Society, the ever interesting Shedd Aquarium, the internationally known Stock Yards, the Rosenwald Industrial Museum, the Board of Trade, the Chicago Stock Exchange, the Great Lakes Naval Training Station, Fort Sheridan, and at Northwestern, Chicago and Loyola Universities. . . . And, while you are about it, see for yourself why in the great stores that line State Street and in its thoroughly complete wholesale establishments, Chicago is hailed as the mercantile center of the nation, equipped to offer you the best in market facilities. All in all, you will find Chicago a city that likes strangers and knows how to welcome them.

The Hotels Listed Below Are Members of The Chicago Association of Commerce and The Chicago Hotel Association. Hotel Accommodations for 400,000 Daily.

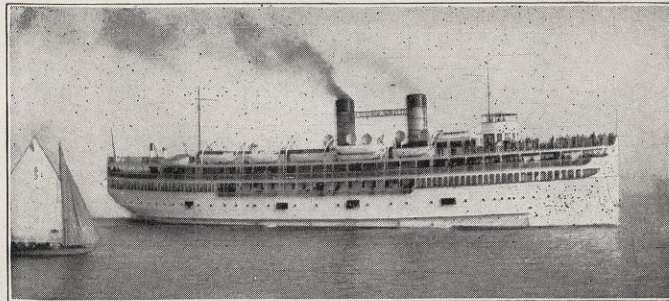
Name of Hotel	Single with Bath	Double with Bath	Twin Beds with Bath	Breakfast	Luncheon	Dinner
ALCAZAR	\$2.00-\$2.50	\$3.50-\$4.50		50c up	65c up	75c up
ALLERTON	2.50-3.00	4.00-5.00	\$4.00-\$5.00	35c up	50c up	75c up
AMBASSADOR	2.50-5.00	4.00-6.00	5.00-8.00	40c up	50c up	\$1.00 up
ATLANTIC	3.00-4.00	4.00-4.50	5.00-6.00	35c up	85c up	\$1.00 up
AUDITORIUM	3.00-6.00	5.00-7.00	6.00-8.00	40c up	65c up	\$1.00 up
BELMONT	4.00-8.00	5.00-10.00	5.00-10.00	40c up	60c up	\$1.00 up
BISMARCK	3.50-6.00	5.00-8.00	6.00-10.00	50c up	65c up	90c up
BLACKSTONE	4.00 up	7.00 up	8.00 up	a La Carte	\$1.00 up	\$1.75 up
BREVOORT	3.00	4.00-5.00	4.50-6.00	20c up	35c up	50c up
BROADVIEW	3.00	5.00-6.00	6.00	30c up	50c up	65c up
CASS	2.00	3.00	4.00	25c up	40c	60c
COMMON-WEALTH	2.00-2.50	4.00-6.00	4.00-6.00	30c up	50c	50c up
CONGRESS	3.50-8.00	5.00-10.00	6.00-12.00	60c up	75c up	\$1.50 up
CRILLON	2.50-3.00	4.50-5.00	6.00	40c up	50c up	75c up
CROYDON	21.00 wk. up	28.00 wk. up	35.00 week	25c up	35c up	65c up
DEL PRADO	3.00-5.00	5.00-8.00	5.00-10.00	40c up	60c up	\$1.00 up
DRAKE	3.50 up	5.00 up	6.00 up	35c up	50c up	\$1.00 up
EASTGATE	3.00-4.00	4.50-5.00	5.00-6.00	30c up	40c up	75c up
EDGEWATER BEACH	4.00-6.00	5.00-7.00	5.00-7.00	25c up	45c up	75c up
FAIRFAX	3.50	5.00	6.00	35c up	60c up	\$1.00 up
FORT DEARBORN	2.50	3.50	5.00	25c up	25c up	50c up
GEORGIAN	3.50	5.00		50c	50c up	85c up
GRAEMERE	2.50-4.00	4.50-6.00	5.50-6.00	25c up	40c up	75c up
GREAT NORTHERN	3.00-4.00	4.50-6.00	6.00-7.00	35c up	50c up	85c up
HARDING, JOHN P.	2.50	4.00	5.00	20c up	35c up	85c up
HARRISON	3.00	4.00-4.50	5.50	35c up	35c up	65c up
HYDE PARK	2.50-3.50	3.50-4.50	3.50-5.00	20c up	25c up	40c up
KNICKERBOCKER	3.00-5.00	5.00-7.00	6.00-8.00	50c up	60c up	\$1.00 up
LAKE SHORE DRIVE	4.00	6.00	7.00			
LA SALLE	3.00	4.50	6.00	35c up	55c up	85c up
LEXINGTON	3.00	5.00	5.00-6.00	15c up	30c up	40c up
MAJESTIC	2.50-3.50	3.50-4.50	4.00			
MARYLAND	2.50	4.00	4.50	40c up	50c up	75c up
MAYFLOWER	2.50 up	3.50 up	4.00 up	30c up	40c up	55c up
MORAIN	3.00 up		5.00 up	45c up	65c up	\$1.00 up
MORRISON	3.00	4.50	6.00	35c up	40c up	75c up
PALMER HOUSE	3.50 up	6.00 up	6.00 up	40c up	35c up	90c up
PARK LANE	2.50-3.00	4.00-4.50	5.00-6.00	25c up	50c up	75c up
PARKSIDE	1.50	2.50	2.50	25c	35c	50c
PARKWAY	2.50 up	4.00 up	5.00 up	40c up	50c up	\$1.00 up
PEARSON	3.00 up	5.00 up	6.00 up	35c up	45c up	\$1.00 up
PICCADILLY	3.00 up	5.00 up				
PLAZA	2.00-3.00	3.50-4.00	4.50-5.00	25c up	50c up	60c up
RIENZI	2.00 up	3.00 up		35c	35c up	50c up
SENECA	3.00 up	4.00 up	5.00 up	35c up	50c up	75c up
SHERIDAN-PLAZA	2.50	4.00	4.50	25c	50c	60c
SHERMAN	3.00-5.00	4.50-7.00	5.00-8.00	35c up	40c up	\$1.00 up
SHERRY	3.50-5.00	4.00-6.00	4.00-6.00	40c up	60c up	\$1.00 up
SHORELAND	4.00-6.00	6.00-7.00	7.00-8.00	45c up	75c up	\$1.10 up
SOUTHMOOR	2.50-3.00	4.00-5.00	5.00-6.00	25c up	35c up	60c up
SOVEREIGN	3.00	4.00-5.00	5.00-6.00	40c up	50c up	75c up
ST. CLAIR	3.00 up	4.50 up	5.00 up	30c up	45c up	85c up
ST. NICHOLAS	1.50	2.00	2.50	20c up	35c up	45c up
STEVENS	3.50-7.00	5.00-9.00	6.00-12.00	45c up	50c up	75c up
STOCK YARD INN	2.00-3.00	2.50 up	2.50-3.50	25c up	50c up	75c up
SURF	3.00-4.00	4.50-5.00	5.00-6.00	20c up	50c up	75c up
UNION PARK	2.00 up	2.50 up	3.50 up	20c up	35c up	50c up
VERSAILLES	1.50	2.50	Kitchenette \$2.50	Single—Double		\$3.00
VICTORIA	2.50	4.00	Restaurant in connection			
WACKER	2.00-3.50	3.00-6.00	4.00-6.00	25c up	35c up	45c up
WASHINGTON	2.50-3.00	3.50-5.00	5.00-6.00	Cafeteria		
WEBSTER	2.50 up	4.50 up	5.00 up	40c up	50c up	\$1.00 up
WINDERMERE	2.50-4.00	4.00-5.50	4.50-6.00	45c up	75c up	75c up

If the provisions of the Code of Fair Competition for the Hotel Industry necessitates adjustments the room rates quoted are subject to modification.

For further information write to W. J. Hennessy, Manager Bureau of Conventions, Chicago Association of Commerce, 1 N. La Salle St., Chicago.

For New Thrills, Rest and Sightseeing
Take a Trip of Delight

on the ever friendly waters of
LAKE MICHIGAN
Glorious Happy Hours Afloat



The Million Dollar Pleasure Steamship
"Roosevelt"

To St. Joseph-Benton Harbor Daily - 10 A. M.
60 MILES RIDE ACROSS THE LAKE
2 hours for swimming, sightseeing in Michigan's
Beautiful Resort Cities
RETURN 4 P. M. ARRIVE CHICAGO 8 P. M.
Almost every visitor takes this famous trip
Round Trip \$1.00

Every Evening — Sightseeing Cruise

Viewing Chicago's brilliant skyline and panorama of
several miles
Illuminated World's Fair grounds
A BEAUTIFUL SPECTACLE TO BEHOLD
LEAVE 9:15 P. M. BACK 11:40 P. M.
"Feast Your Eyes — Rest Your Feet"
Round Trip \$1.00

Trips By Other Ships

ALONG SHORE TRIPS — JACKSON AND OTHER PARKS
CRUISES FOR A FEW HOURS TO SEVERAL DAYS
BOATS — FROM AND TO WORLD'S FAIR

Write A. K. Greenebaum
Passenger Traffic Manager
CHICAGO ROOSEVELT STEAMSHIP LINES
Docks — Michigan Avenue Bridge

ADJACENT TO 333 N. MICHIGAN AVENUE
Telephone Franklin 5851

13B
What It Will
Cost **YOU**
to See

Chicago's
New 1934
World's
Fair

OPENS MAY 26

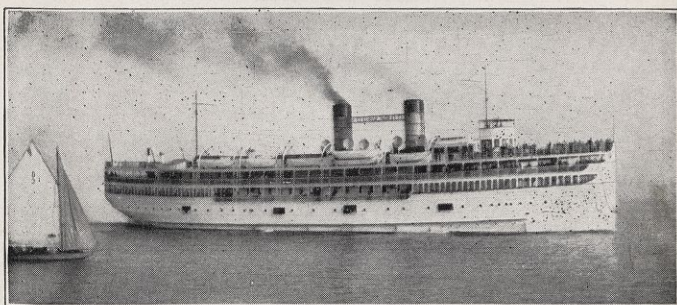
Facts Authorized by
The Chicago Association of Commerce

For New Thrills, Rest and Sightseeing
Take a Trip of Delight

on the ever friendly waters of

LAKE MICHIGAN

Glorious Happy Hours Afloat



The Million Dollar Pleasure Steamship

“Roosevelt”

To St. Joseph-Benton Harbor Daily - 10 A. M.

60 MILES RIDE ACROSS THE LAKE

2 hours for swimming, sightseeing in Michigan's
Beautiful Resort Cities

RETURN 4 P. M.

ARRIVE CHICAGO 8 P. M.

Almost every visitor takes this famous trip

Round Trip \$1.00

Every Evening — Sightseeing Cruise

Viewing Chicago's brilliant skyline and panorama of
several miles

Illuminated World's Fair grounds

A BEAUTIFUL SPECTACLE TO BEHOLD

LEAVE 9:15 P. M.

BACK 11:40 P. M.

“Feast Your Eyes — Rest Your Feet”

Round Trip \$1.00

Trips By Other Ships

ALONG SHORE TRIPS — JACKSON AND OTHER PARKS

CRUISES FOR A FEW HOURS TO SEVERAL DAYS

BOATS—FROM AND TO WORLD'S FAIR

Write A. K. Grenebaum

Passenger Traffic Manager

CHICAGO ROOSEVELT STEAMSHIP LINES

Docks — Michigan Avenue Bridge

ADJACENT TO 333 N. MICHIGAN AVENUE

Telephone Franklin 5851