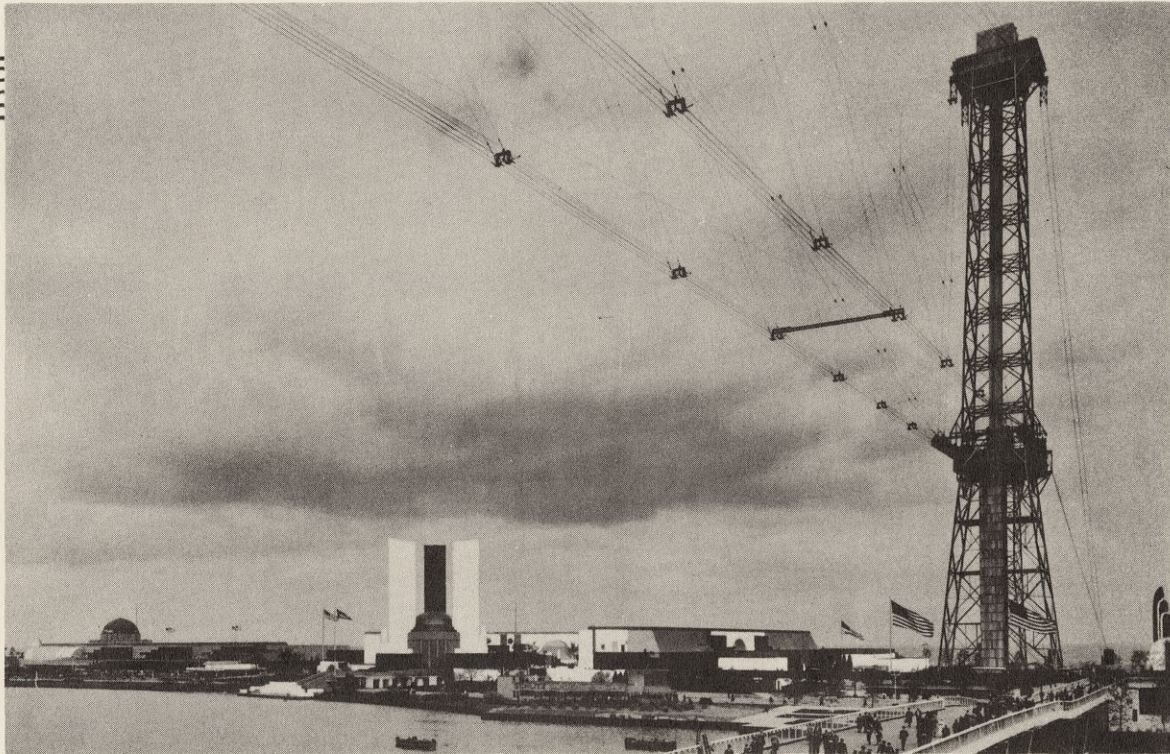


A PERFECT RECORD *of* VERTICAL TRANSPORTATION AT "A CENTURY *of* PROGRESS"



EASTERN TOWER OF THE SKYRIDE

THE SKYRIDE

Eight Otis electric, high-speed, automatic Signal-Control Elevators, Otis-maintained.

Passengers carried 5,966,052 *

DIAMOND MINE

Two Otis Hydraulic Elevators, built to typify Mine Hoists.

Passengers carriedover 800,000

TRAVEL AND TRANSPORT BUILDING

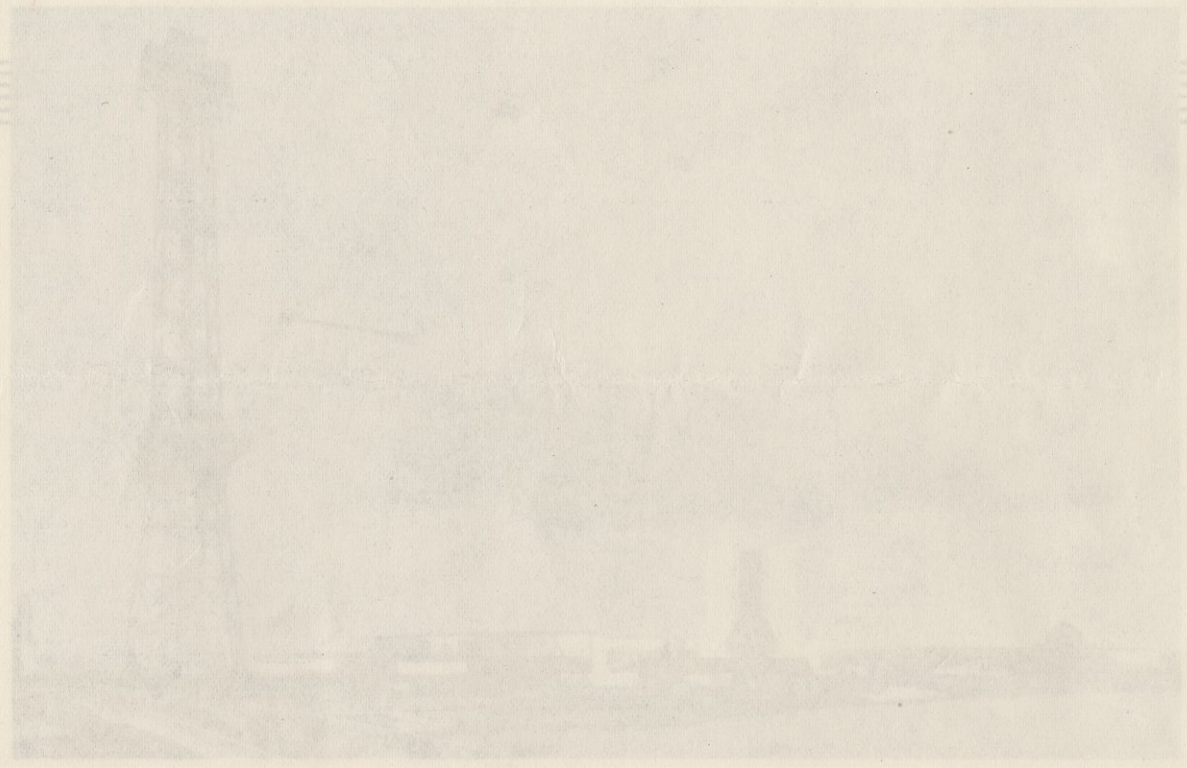
One high-speed, heavy duty, 4-ft. wide Otis Escalator.

Passengers carried . . . (estimated) 5,000,000

TOTAL 11,766,052 PASSENGERS CARRIED -- not only without accident, but without failure of any part of the transportation equipment. The total number of passengers carried was more than half the paid gate attendance of "A Century of Progress" during its five and one-half months of operation in 1933.

** These eight elevators carried an average of more than 35,000 passengers per day, which is believed to be a new record for intensive elevator passenger traffic.*

A PERFECT RECORD of VERTICAL TRANSPORTATION AT "A CENTURY of PROGRESS"



EASTERN TOWER OF THE SKYRIDE

THE SKYRIDE

Eight Otis electric, high-speed, automatic Signal-Control Elevators, Otis-maintained.

Passengers carried 2,366,052 *

DIAMOND MINE

Two Otis Hydraulic Elevators, built to carry Mine Hoists.

Passengers carried 500,000

TRAVEL AND TRANSPORT BUILDING

One high-speed, heavy duty, 4-ft. wide Otis Escalator.

Passengers carried . . . (estimated) 2,000,000

TOTAL 11,766,052 PASSENGERS CARRIED -- not only without accident, but without failure of any part of the transportation equipment. The total number of passengers carried was more than half the paid attendance of "A Century of Progress" during its five and one-half months of operation in 1933.

* These eight elevators carried an average of more than 32,000 passengers per day, which is believed to be a new record for intensive elevator passenger traffic.