



CHEMICAL

Mallinckrodt WORKS

at the **CENTURY OF PROGRESS
INTERNATIONAL EXPOSITION
CHICAGO**

The Mallinckrodt Chemical Works started in 1867 with a small factory in St. Louis. Today, on the same site there stands the imposing main plant pictured on the back of this folder. There are as well, Mallinckrodt factories in Jersey City and Toronto, and six branches in strategic centers.

Mallinckrodt manufactures over 1500 fine chemicals for medicinal, photographic, analytical and industrial purposes. They are known the world over by physicians, pharmacists, hospitals, chemists, photog-

raphers, engravers, lithographers; they are used in over 100 different industries. The two Mallinckrodt exhibits strategically located on the court of the Hall of Science, show many products of science with the development of which Mallinckrodt has been intimately associated.

The Mallinckrodt Chemical Works invite your inquiries for information and prices on any of the 1500 fine chemicals they manufacture. A complete list will be sent on request.





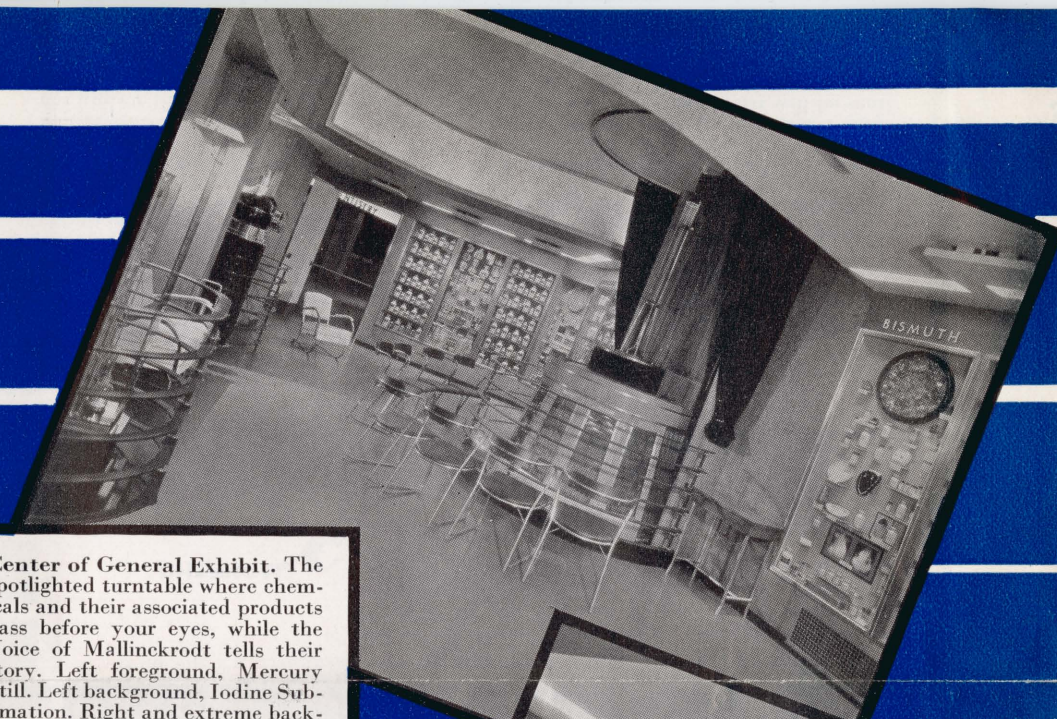
Entrance to Mallinckrodt General Exhibit. Spotlighted turntable visible in center. Iodine sublimation in right window. General products to left.

Outside Corner of Medical Exhibit on Court. Display to the left shows how Iodeikon, a dye which permits of X-ray visualization of the gall-bladder is injected into the arm, how it afterwards appears in the gall-bladder and the shadow pictures it shows. To the right, silver salts of which Mallinckrodt is one of the largest manufacturers.





View Through Medical Exhibit. In the right foreground reproduction of the country's most up-to-date children's operating room at Barnes Hospital, St. Louis. Note the illustrations from fairy tales. There Mallinckrodt Ether is largely used. Right background, one of the Ether Movies that tells the chemical story of this Mallinckrodt specialty. Left foreground, the striking X-rays of a snake's digestive activity.



Center of General Exhibit. The spotlighted turntable where chemicals and their associated products pass before your eyes, while the Voice of Mallinckrodt tells their story. Left foreground, Mercury Still. Left background, Iodine Sublimation. Right and extreme background, some of the exhibits showing raw products (such as bismuth), chemicals derived from them and the variety of everyday articles they help to create.



Corner of Medical Exhibit. To the right, some of the most interesting X-ray pictures ever taken with a dye. To the left, two groups of medicinals in which Mallinckrodt excels—Narcotics and Arsenicals. The Narcotics are manufactured and handled with utmost precaution under government control.



Corner of General Exhibit. Here are seen the various industrial and medicinal chemicals derived from raw materials such as mercury and nutgalls, and the surprising number of everyday articles for which they are wholly or partly responsible.

32
View of the St. Louis plant with inset showing the Jersey City plant. Another plant is located in Toronto, with Mallinckrodt branches in six strategic centers.

**MALLINCKRODT
CHEMICAL WORKS**

*"Over 1500 fine
chemicals"
for
Medicinal
Photographic
Analytical
Industrial
Use*

PRINTED IN U. S. A.

