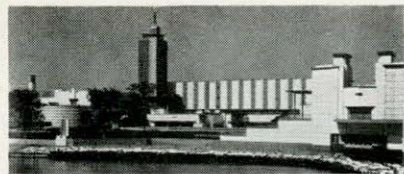




# HILD

EFFICIENT  
ECONOMY  
*is the "BUY WORD"*  
for HILD  
FLOOR MACHINES

FLOOR MACHINES *at*  
A CENTURY OF PROGRESS



Hall of Science—A Century of Progress

## THE HILD EXHIBIT IS LOCATED IN THE HALL OF SCIENCE BUILDING

ground floor south end of building. (Opposite Union Carbide & Carbon Co. exhibit.) Near 18th St. entrance.

See photographic reproduction on front page of this circular.

The Hild Floor Machine Co. have prepared a very interesting display of its guaranteed floor maintenance products at A Century of Progress.

Four different sizes of Hild floor machines are on display; also soaps, liquid and paste waxes, seals and other floor treatments.

In order that the visitor may see at a glance floors in their natural state as well as scientifically treated to withstand traffic, small panels of the following floors are on display: Wood floors consisting of Maple, Oak, Pine and Parquet. Porous tile, terrazzo, cement, cork tile, asphalt tile, rubber tile, inlaid and battleship linoleum. In the center of each of these floor panels, a bottle containing the Hild Guaranteed Treatment with which the floor was treated is also shown.

A continuous moving picture projected on a screen at the rear of the booth shows the Hild floor machine in operation. Here the reconditioning of a wood floor is clearly displayed, old varnish is scrubbed off, the floor sanded, then sealed, waxed and polished. A linoleum floor is also scrubbed clean, the dirty water removed with the Hild floor pan and squeegee, liquid wax applied and polished. To prove the ease by which the Hild floor machine is operated, a seven year old boy in one of the scenes is shown operating the Hild. Only six minutes time is required for the visitor to watch the complete moving picture show, making it easy for anyone to see that Beautiful floors are "easy to have and easy to keep" the Hild Way.

The Hild floor machine is the "only" floor machine demonstrated at the World's Fair, and experienced floor maintenance engineers are constantly present at the Hild display so that any visitor with a floor problem can secure complete and accurate information at all times.

It is estimated that Hild Floor Machines and Hild floor treatments are used in the cleaning and maintenance of 75% of the treated floors throughout the World's Fair.

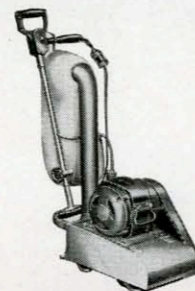
The Administration of A Century of Progress uses Hild Floor Machines exclusively.

Below is a partial list of exhibitors who are using Hild floor machines and Hild floor treatments to clean and maintain their floors.

- |                               |                                |
|-------------------------------|--------------------------------|
| General Motors Building       | Link Belt Company              |
| Chrysler Motors Building      | Petrolagar Laboratories        |
| Johns Manville Building       | Dentists Supply Co. of N. Y.   |
| Masonite House                | Household Finance Corporation  |
| Petroleum Heat & Power Co.    | Dr. Scholl's Foot Comfort Shop |
| Alemite Corporation           | Infant Incubator Building      |
| Copper & Brass Research Assn. | Borg Warner Corporation        |
| Texas Company                 |                                |

### CALL IN A HILD FLOOR ENGINEER

At no charge to you the Hild Floor Machine Co. will send a floor engineer to inspect your floors at your home or place of business. He is experienced, he knows floors and their maintenance, he can suggest the best method for renewing them and their subsequent maintenance. He can prove that he is correct in his method by actually cleaning a small portion of your floor.



#### New HILD Sander Quick-Cutting—Drum Type

The last word in electrically driven, heavy duty portable, high speed floor sanding machines. Weight 95 pounds with solid power and drive units set entirely in ball bearings, which eliminates all vibration with machine running in any direction over the floor. This machine cuts through old varnish, etc., with ease to a complete refinished floor.

Connects to lamp socket or base plug.

## HILD GUARANTEED FLOOR TREATMENTS

FOR MAKING FLOORS BEAUTIFUL AND EASY TO KEEP BEAUTIFUL

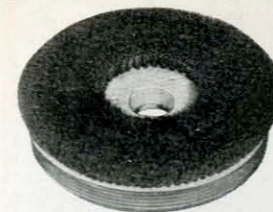


Hild Floor Treatments offer advantages that neither practical housewife nor efficient building superintendent can afford to overlook. A few of the more important are as follows:

- Greater Beauty.** Hild Floor Treatments give a rich lustrous finish that enhances the natural color and beauty of the floor.
- No Ugly Scratches.** Hild Floor Treatments penetrate into the pores of the floor. Unlike varnish, they do not remain on the surface to be easily scratched when moving furniture, etc.
- Non-slippery.** Hild Floor Treatments when properly applied are never slippery.

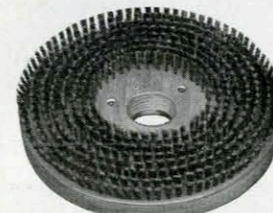
- Low Cost.** Hild Floor Treatments are economical and easy to apply. A little goes a long way.
- No Worn Spots.** Doorways and other places subject to wear can be touched up or simply repolished as needed. No "overlapping" will show. The entire floor need not be retreated except at long intervals.
- No refinishing.** Once the old varnish has been removed and the floor treated the Hild way, it will *never* have to be refinished again. All you do is apply new treatment when and where needed.
- Sanitary.** The Hild treated floor, through electrical attraction, keeps dust and germs out of the air. Dusting and other cleaning is greatly simplified.
- Easy to Keep Clean.** By filling the pores of the floor, Hild Treatments seal the surface against the penetration of dirt. Instead of being ground into the floor, the dirt stays on the surface where it can readily be swept away.

# 7 DIFFERENT SERVICES with only 1 MACHINE



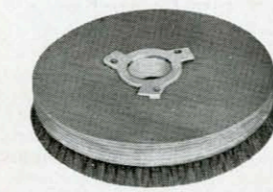
1—FOR SCRUBBING  
THE BASSINE SCRUB BRUSH

Used for scrubbing any and all kinds of floors spotlessly clean. Will not splash or spatter a single drop of water. Also used in connection with steel wool for dry cleaning and polishing wood and linoleum.



2—FOR SCRUBBING  
Cement or Concrete Floors  
THE STEEL WIRE BRUSH

Scrubbing with steel wool placed under the wire brush will instantly clean very dirty floors. Steel wool used this way will not scratch the floor. Also used with steel shavings to scrub off varnish or shellac.



3—FOR POLISHING  
4—FOR WAXING

THE POLISHING BRUSH  
Used for polishing wax to a lustrous hard finish that will not show footprints or heel marks. Also used to apply wax.



### THE MOST EFFICIENT FLOOR MACHINE

With these seven attachments and a Hild Floor Machine, you can tackle every type of floor finishing job, efficiently, economically and speedily. All attachments revolve 180 revolutions a minute and go right up to baseboards. Each can be easily and quickly attached to the quiet running Hild floor machine.

In operation the two rubber tired wheels at rear of machine are swung around and up so as to allow the entire weight of the Hild floor machine to rest upon the attachment used which insures thorough and efficient work being done in the shortest possible time.

There are four sizes of Hild floor machines, 11 inch; 13 inch; 15 inch and 18 inch brush diameter which is your assurance that a "just right" size is available for your requirements. Finished in Chromium plate and polished aluminum.

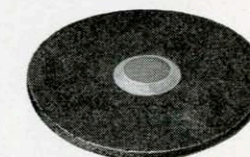
### Seeing Is Believing

Several thousands of our customers who purchased a Hild Floor Machine did so after trying it on their OWN floors and could see its superiority over other methods. We welcome an opportunity to inspect your floors and advise you as to the cleaning and maintenance methods best suited to your particular kind of floor. Invite the Hild Man to call today. No obligation.



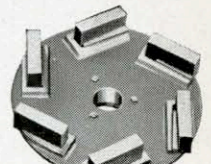
5—SANDING DISC

Used to sandpaper wood or cork tile to a smooth surface. A 3-inch dia. flat countersunk plate, holds sandpaper firmly to the felt padded aluminum disc.



6—POLISHING BUFFER

Felt polishing buffer (18", 20" and 22" in diameter) — for repolishing treated floors. Removes streaks, goes under radiators and will polish waxed cove baseboards.



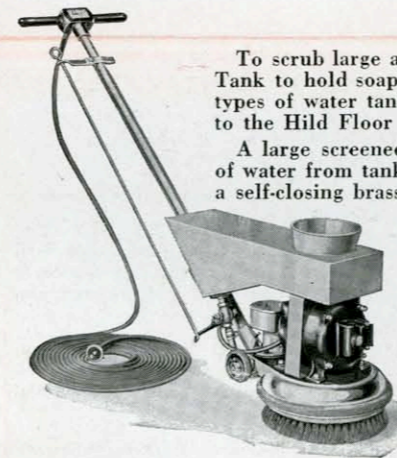
7—GRINDING DISC

Used for resurfacing scratched or pitted marble and terrazzo floors. Also used for holystoning decks of ships.

### WATER TANK

To scrub large areas of floors spotlessly clean in the shortest time, the use of the Hild Water Tank to hold soap and water is a desirable convenience and its purchase recommended. Two types of water tanks are illustrated, Horizontal and Vertical types, either one can be attached to the Hild Floor Machine in 3 minutes' time.

A large screened opening at top of tank permits rapid filling from hose or pail. The flow of water from tank to floor is controlled by a finger touch on  $\frac{3}{16}$ -inch rod which connects to a self-closing brass Lunkenheimer valve at bottom of tank.



HORIZONTAL WATER TANK

Capacity for Model D, 6 Gallons  
Capacity for Model C, 4 Gallons  
Capacity for Model A, 2 Gallons  
Capacity for JUNIOR, 2 Gallons



VERTICAL WATER TANK

Capacity for Either Model A, C or D,  
3½ Gallons

A Heating Unit to keep solution in tank hot and Gauge Glass to show water level supplied at slight additional cost.

### GET A HILD MAINTENANCE CHART FREE

#### Hild Floor Maintenance Chart

	Wood	Linoleum	Cork	Rubber	Ceramic	Marble	Granite	Tile	Concrete	Asphalt	Other
1. Restoring	A	B	C	D	E	F	G	H	I	J	K
2. Rubbing with floor dirt	L	M	N	O	P	Q	R	S	T	U	V
3. Scraping excess by dirty floor	W	X	Y	Z	AA	AB	AC	AD	AE	AF	AG
4. Cleaning all sealed floors	AH	AI	AJ	AK	AL	AM	AN	AO	AP	AQ	AR
5. Restoring with wax	AS	AT	AU	AV	AW	AX	AY	AZ	BA	BB	BC
6. Preparing wax or oil combination floor for treatment	BD	BE	BF	BG	BH	BI	BJ	BK	BL	BM	BN
7. Brush or sweep	BO	BP	BQ	BR	BS	BT	BU	BV	BW	BX	BY
8. Seal stone	BZ	CA	CB	CC	CD	CE	CF	CG	CH	CI	CJ

# HOW to Make Your Floors Give You MORE



Cut down your labor costs, speed up your work with a Hild Floor Machine. There are seven different services with only one machine.

## for LESS MONEY

IT'S BEING done every day. Floors are being made beautiful, lustrous . . . far more attractive than ever before . . . while maintenance costs are going down . . . in many instances as much as 50% . . . by the modern, scientific method of treating and polishing with the Hild Floor Machine. Frequent scrubbing is entirely eliminated. Floors last five times as long.



The Hild safety switch (developed in 1929) makes the Hild guaranteed floor machine foolproof. Stops machine instantly when operator releases hold on handle.



Free test makes good on any floor. Ask for a free trial. Learn exactly how much time and money the Hild can save for you.

Cut  
floor  
maintenance  
costs  
WITH  
**HILD**  
Guaranteed  
PRODUCTS



There's a speedy Hild floor machine of "Just the Right Size" to improve the appearance of your floors.



Easy to operate. The Hild is self-propelling. It practically runs itself with only the effortless guidance of the operator.

A "HILD" Maintenance Engineer will be pleased to inspect your floors and advise you as to the correct cleaning and maintenance methods best suited to your particular type of floor.

Have him show you the machine that scrubs, waxes, polishes, grinds, refinishes and sandpapers . . . all with record-breaking speed because the entire weight is over head.

Write, Wire or Phone to the  
**HILD FLOOR MACHINE CO.**  
108 W. Lake St., Chicago, Ill.  
Phone Randolph 8309 or Central 4292  
BRANCH OFFICES IN PRINCIPAL CITIES



It takes pressure (weight) to scrub, wax, steel wool, polish or refinish floors thoroughly and efficiently. For that reason the entire weight of the "Hild" rests upon the attachment used.