



17A

CENTURY

OF

PROGRESS

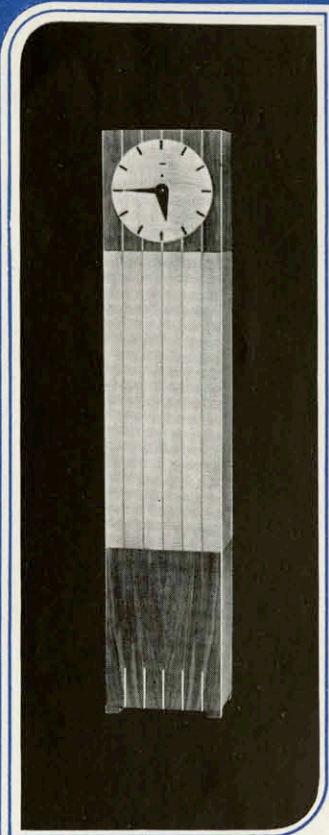
PATTERNS

*T*HE PEOPLE WHO BEST UNDERSTAND
the meaning of "home" know that the stately
Hall Clock is more than an article of fine furniture. Praised as they are
for accuracy, Colonial Clocks are infinitely more than faithful timekeepers.
In the fortunate homes that possess them, they appreciate its personality —
its historic lineage, and as an expression of dignity and cultured taste in
furnishing, the well chosen tall clock is conceded a place of high honor.

Perhaps you have admired the stately grace of some majestic clock and
mentally pictured it in your own home, without seriously considering the
actual realization of this picture. Then it is of even greater interest to know
that these clocks are made for all types of good homes, whether mansion
or bungalow, and that in no case is the cost of the most suitable one out
of proportion to its importance in the plan of decoration.

The illustrations in this folder are submitted as indications of the variety
of beautiful Colonial Clocks offered for your selection.

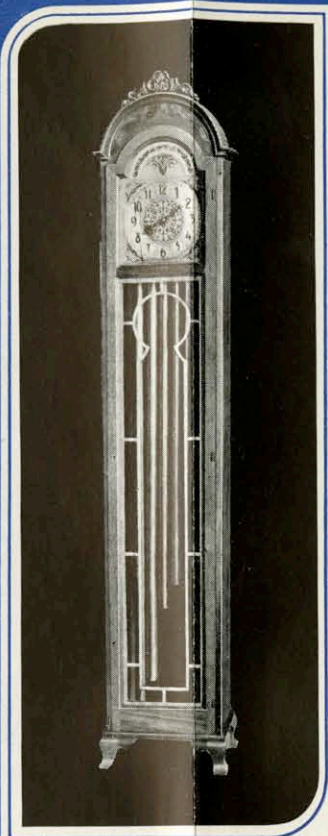
COLONIAL MANUFACTURING CO.
Z E E L A N D, M I C H I G A N



No. 1635 — Modern Period

Height 64 in., Width 13 in., Depth 9 in. Designed specially by G. Rohde for our exhibit at the 1934 Century of Progress. Rare woods of various colors are combined, so as to make a beautiful and harmonious whole.

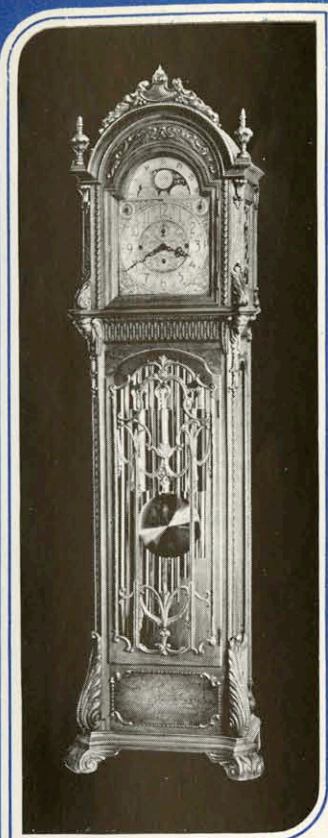
Movement No. 24S: Synchronous Spring-wind Chime movement, rendering the Westminster Chime on every quarter and striking the hour. Operates on various cycles of alternating current.



No. 1598 — Hepplewhite Period

Height 73 in., Width 15 in., Depth 11 in. Solid Honduras Mahogany

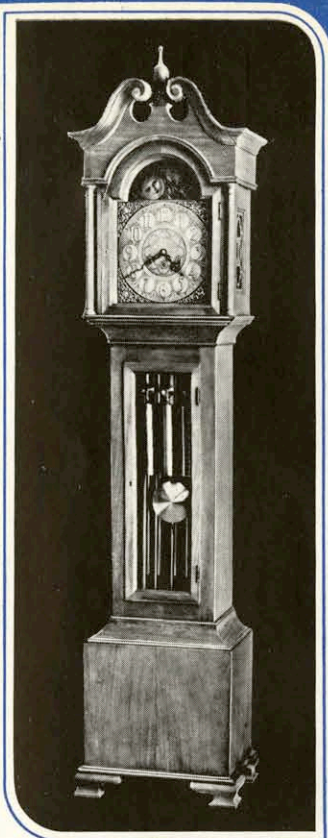
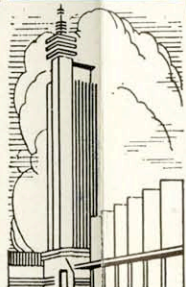
Movement No. 54: Rod Chime, self-adjusting, weight wound movement rendering the Westminster Chime on a chord of four rods. Movement has all the latest improvements.



No. 1539 — Italian Renaissance Period
Height 84 in., Width 25 in., Depth 17 in.
Solid Honduras Mahogany

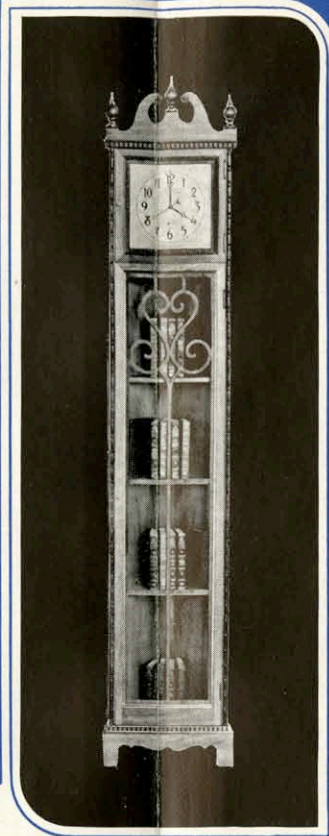
One of the most beautiful patterns in our line. Correctly proportioned with a wealth of detail.
Movement No. 82: Nine tube, self-adjusting cable wound movement, rendering every quarter either the Westminster, Wychester or Whittington Chime, and striking the hour. Filigree dial, weights and pendulum of rare beauty, executed by curling, twisting and plaiting of fine, pliable threads of metal. A work of art.

CENTURY
OF
PROGRESS
PATTERNS



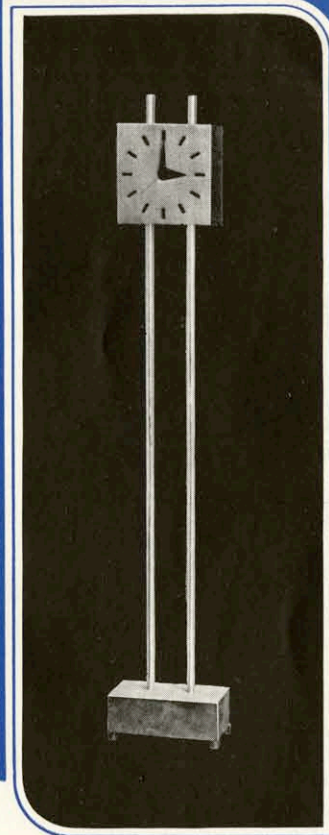
No. 1216 — Mt. Vernon Pattern
Height 87 in., Width 21 in., Depth 15 in.
Solid Honduras Mahogany

This pattern was selected and shown at the French International and Colonial Overseas Exhibition in Paris during 1932, in the complete replica of the illustrious Mt. Vernon home of George Washington.
Movement No. 53: Five tube, self-adjusting, weight wound movement, rendering the Westminster Chime on every quarter and striking the hour. Equipped with stationary moon dial having raised numerals.



No. 1585 — Corner Clock Design
Height 73 in., Width 15 in., Depth 9 in.
Solid Honduras Mahogany Front


Movement No. 25S: Synchronous electric time movement operating on 60 cycle alternating current. Has full sweep second hand and indicator to inform current interruptions.



No. 1634 — Modern Period
Height 71 in., Width 15 in., Depth 9 in.

A pleasing combination of chromium plated metal with selected woods, creating a clock of graceful and pleasing proportions, in the most advanced modern design as created by Gilbert Rohde.
Movement No. 25S: Synchronous electric time movement operating on 60 cycle alternating current. Has full sweep second hand and indicator to inform current interruptions.

◆ COLONIAL MANUFACTURING CO. ◆
ZEELAND, MICHIGAN
... World's Largest Makers of Hall Clocks ...



EXHIBITED IN THE
HOME PLANNING HALL
CENTURY *of* PROGRESS
CHICAGO, ILLINOIS

