

1934



Souvenir
MOTION
PICTURE
FILM

A CENTURY
OF PROGRESS
1934

KAUFMANN & FABRY CO.
Official Photographers

**. . . A LIBRARY OF
16MM AND 8MM FILMS OF
THE CHICAGO WORLD'S FAIR**

Sold by

KAUFMANN & FABRY CO.
HALL OF PHOTOGRAPHY
West Approach 16th Street Bridge
A Century of Progress

1934 WORLD'S FAIR



AVENUE OF FLAGS

A complete movie record of the Fair. Striking views of the major exhibits and the larger buildings. The Avenue of Flags, the Hall of Science, the Electrical Group, the General Exhibits Building, the Hall of Religion, the Federal Building, Travel and Transport Building, Motor Car Exhibits and the Modern Homes, are some of the many beautiful scenes.

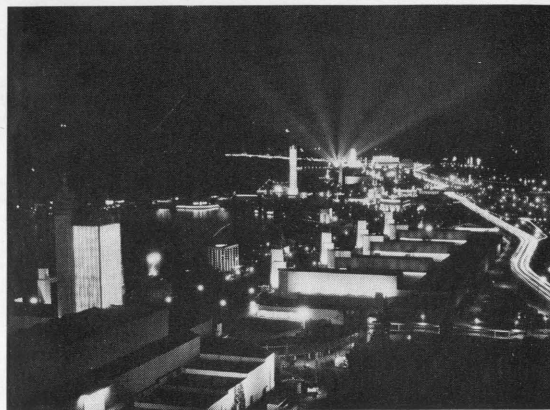
The many forms of free entertainment, the Beach Midway, the famous Sky Ride and the charming Villages portray the fantastic side of the Exposition. The Shorter film by the same title is a condensed version.

16 MM	400 feet	\$20.00
8 MM	200 feet	10.00
16 MM	100 feet	5.00
8 MM	50 feet	2.50

1934 WORLD'S FAIR AT NIGHT

*A*s the sun sets the Fair bursts into a blaze of colorful lights beautiful beyond description. With the coming of night millions of lights flash a symphony of illumination—a marvelous sight to behold. The Neon lighting effects, the startling lighting columns, the indirect lighting features and the harmonious displays must be seen to be appreciated. This unusual film is essential to any complete movie record of the Fair.

16 MM	100 feet	\$5.00
8 MM	50 feet	2.50



TYPICAL NIGHT SCENE

WORLD'S FAIR from the AIR



BIRDSEYE VIEW FROM THE AIR

*A*s we take off in a blimp and glide smoothly through the air, the Fair in all its colossal beauty becomes a miniature city. The busses appear to be tiny caterpillars and the great masses of human beings resemble an army of industrious ants. The lagoons are like beautiful jewels in a gorgeous setting. The buildings below assume bizarre shapes.

The master architects of the exposition surely must have visualized the Fair from the air because this birds-eye-view unfolds a colorful panorama too magnificent to describe in words. One must actually see this film to appreciate it.

16 MM	100 feet	\$5.00
8 MM	50 feet	2.50

Villages of the World's Fair



A STREET OF VILLAGES

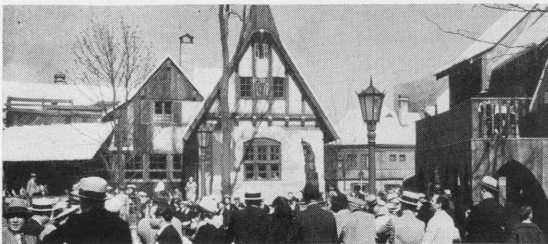
Many delightful and quaint villages charm the visitor with native customs, curious architecture and inviting shops. Excellent cuisines, folk dancing, music and gaiety are the feature attractions.

16 MM	200 feet	\$10.00
8 MM	100 feet	5.00
16 MM	100 feet	5.00
8 MM	50 feet	2.50

World's Fair Black Forest

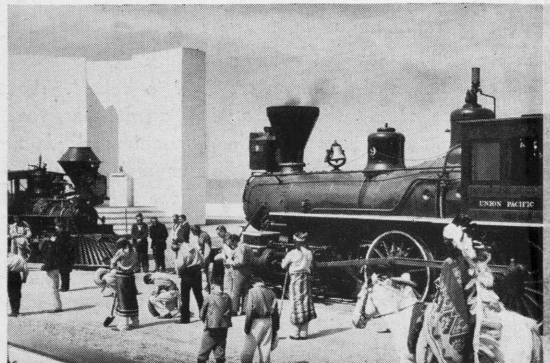
One of the Fair's most picturesque villages. Amid a setting of snow and ice one is entertained by the world's outstanding skaters. Such pastimes as "tobogganing," dancing, visits to the unique shops, are thrilling and entertaining.

16 MM	100 feet	\$5.00
8 MM	50 feet	2.50



BLACK FOREST VILLAGE

WORLD'S FAIR WINGS OF A CENTURY



WINGS OF A CENTURY

This is one of the most impressive and educational features of the Chicago World's Fair. This Pageant of Transportation starts back with the wilderness pathfinder and carries on through the era of river and canal navigation, horse drawn vehicles, spanning the continent by rail, and the horseless carriage to the conquest of the air. It is really a revelation to see Wings of A Century, the life blood of the Nation.

16 MM	200 feet	\$10.00
8 MM	100 feet	5.00